

**16-30 Cody Avenue, Ridgewood, NY 11385**

**For Lease**

**25,800 SF or 21,600 SF on 2<sup>nd</sup> Floor W/ Private Elevator & Loading  
at Bushwick/Ridgewood Border**

Property Features:

Building:	60,000 SF 2 Story + useable basement
Available on 1 <sup>st</sup> Fl.:	5,800 SF, 15'-19' 6" ceiling
Available on 2 <sup>nd</sup> Fl.:	19,800 SF, 12' 6" to 15' 6" ceiling
Office:	2,500 SF
Fright Elevators:	2 – One excl. for 2nd fl. 10' X 10' 5K LBS
Int. Load. Docks:	2 Double-Wide
Heat:	Gas
Electric Power:	1,200 AMPS
Zone:	M1-4
Block & Lot:	3557-28



Subway: L Train on Wyckoff Ave. & Halsey St.

Ideal For: Storage, Warehousing, Light Mfg.  
Woodworking, Printing, TV Set Design

**Asking \$13.50 PSF 21,600 SF on 2<sup>nd</sup> Floor**



*For Further Information & Inspection, Contact Exclusive Agent:*

**Hillel Galosher Assoc. Broker**

**(718) 371-0126 / hgalosher@s-z.com**

**Sholom &  
Zuckerbrof Realty LLC**  
Established 1962

**Kaufman Astoria Studios 35-11 35<sup>th</sup> Avenue, Long Island City 11106**

Although all information is from sources deemed reliable, and no representation is made as to the accuracy thereof, it is submitted subject to errors, omissions, changes of price, prior sale, or withdrawal without notice

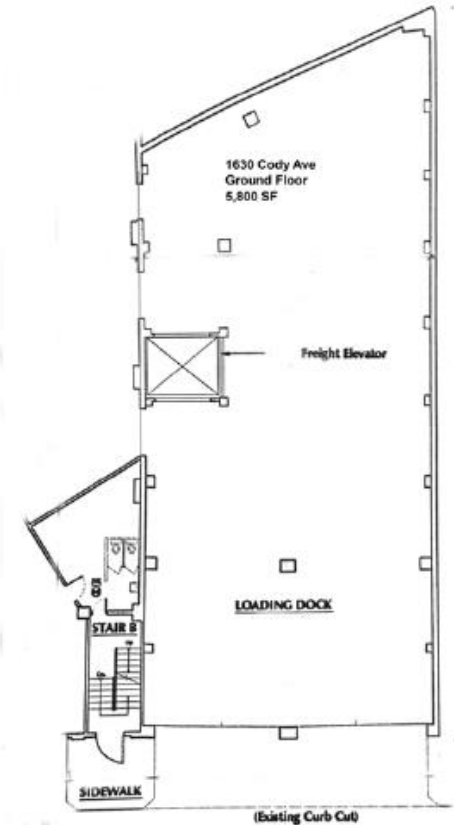
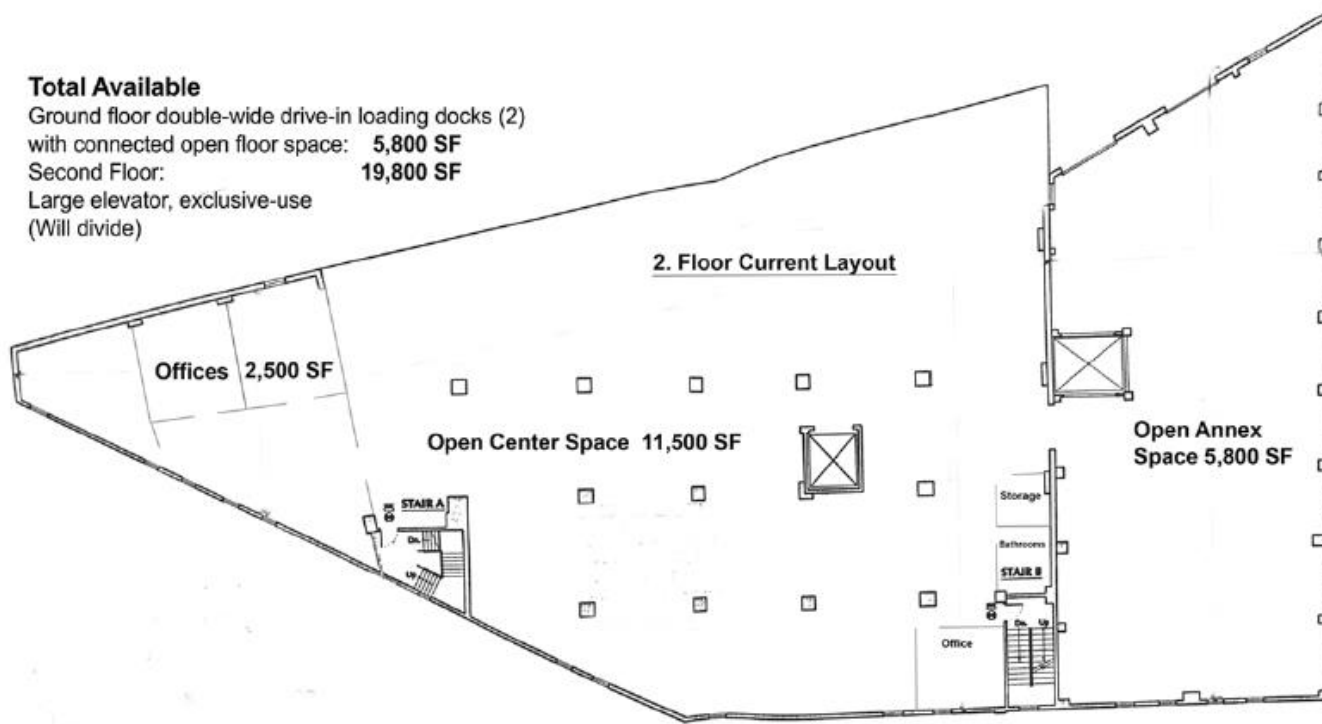
# 16-30 Cody Avenue, Ridgewood, NY 11385

**2<sup>nd</sup> Floor**  
**19,800 SF Divisible**

**Ground Floor**  
**5,800 SF**

## Total Available

Ground floor double-wide drive-in loading docks (2)  
with connected open floor space: **5,800 SF**  
Second Floor: **19,800 SF**  
Large elevator, exclusive-use  
(Will divide)



***For Further Information & Inspection, Contact Exclusive Agent:***

**Hillel Galosher**  
**Assoc. Broker**

**(718) 371-0126 / hgalosher@s-z.com**