

MARICOPA FIESTA

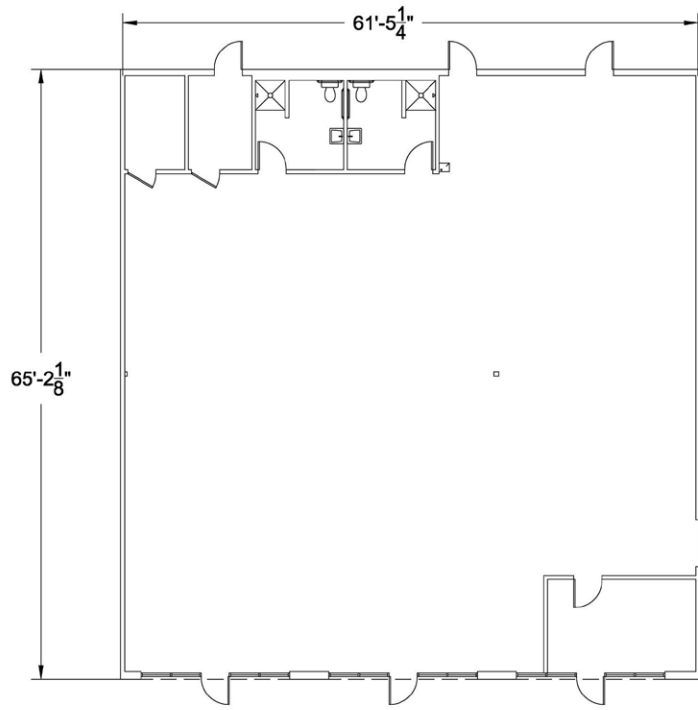
PHASE II

20924 North John Wayne Parkway
Maricopa, Arizona 85139



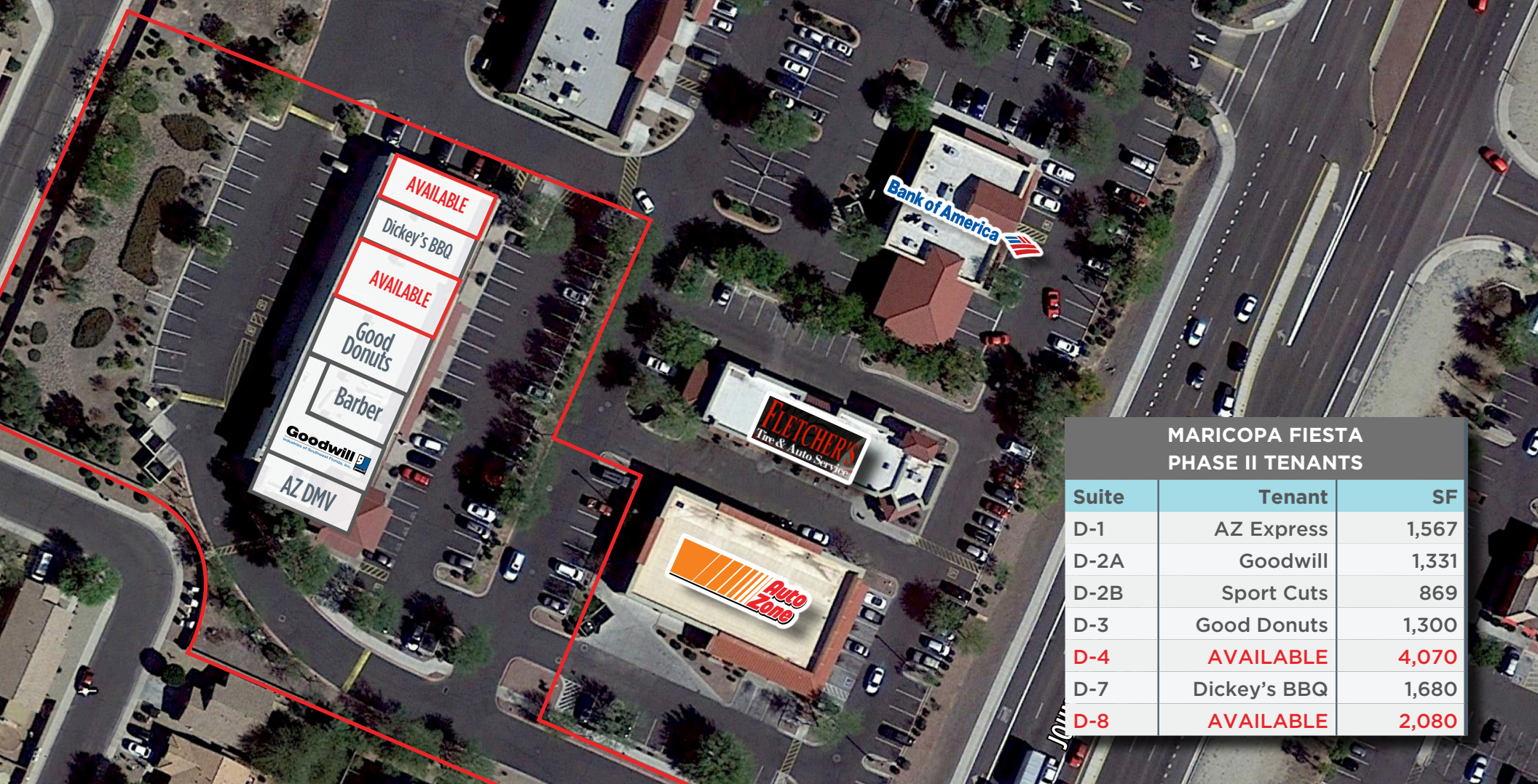
Chris Campbell
Director
+1 602 224 4412
chris.campbell@cushwake.com

2555 E. Camelback Rd, Suite 400
Phoenix, Arizona 85016
ph:+1 602 954 9000
fx:+1 602 468 8588
cushmanwakefield.com



SUITE D4
±4,070 SF





MARICOPA FIESTA PHASE II TENANTS

Suite	Tenant	SF
D-1	AZ Express	1,567
D-2A	Goodwill	1,331
D-2B	Sport Cuts	869
D-3	Good Donuts	1,300
D-4	AVAILABLE	4,070
D-7	Dickey's BBQ	1,680
D-8	AVAILABLE	2,080

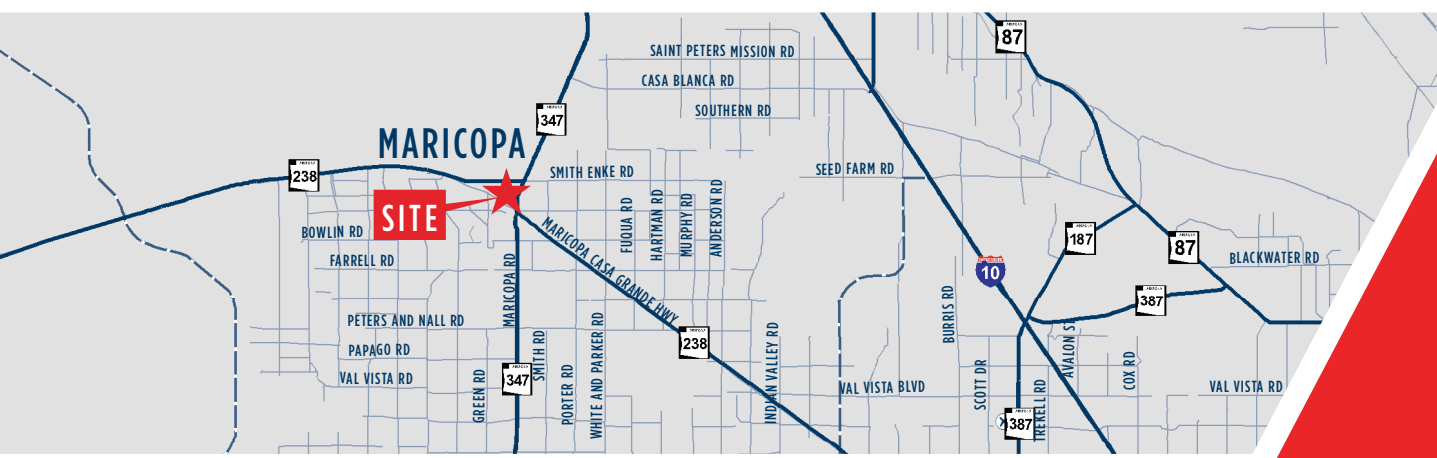
DEMOGRAPHICS & TRAFFIC COUNTS

2016	1 Mile	3 Miles	5 Miles
Population	11,527	44,364	46,366
Households	3,713	14,491	15,157
Average Income	\$79,083	\$77,512	\$77,310

Smith Enke	John Wayne Pkwy
16,966 VPD	46,185 VPD

PROPERTY HIGHLIGHTS

- Bashas Anchored Shop Building
- Newer Construction - Built in 2005
- Located in the Epicenter of Maricopa
- Maricopa is One of the Fastest Growing Communities within the State
- Easy Access to Maricopa Highway 347
- Motivated Landlord
- ±4,070 SF Available Former Fitness Center (Divisible)
- ±2,080 Available Former Veterinarian Office End Cap



MARICOPA FIESTA PHASE II

Chris Campbell
 Director
 +1 602 224 4412
 chris.campbell@cushwake.com

2555 E. Camelback Rd, Suite 400
 Phoenix, Arizona 85016
 ph:+1 602 954 9000
 fx:+1 602 468 8588
 cushmanwakefield.com



20924 North John Wayne Parkway
 Maricopa, Arizona 85139