

Northside Square Office

29399 US Hwy 19 N. | Clearwater, FL 33761



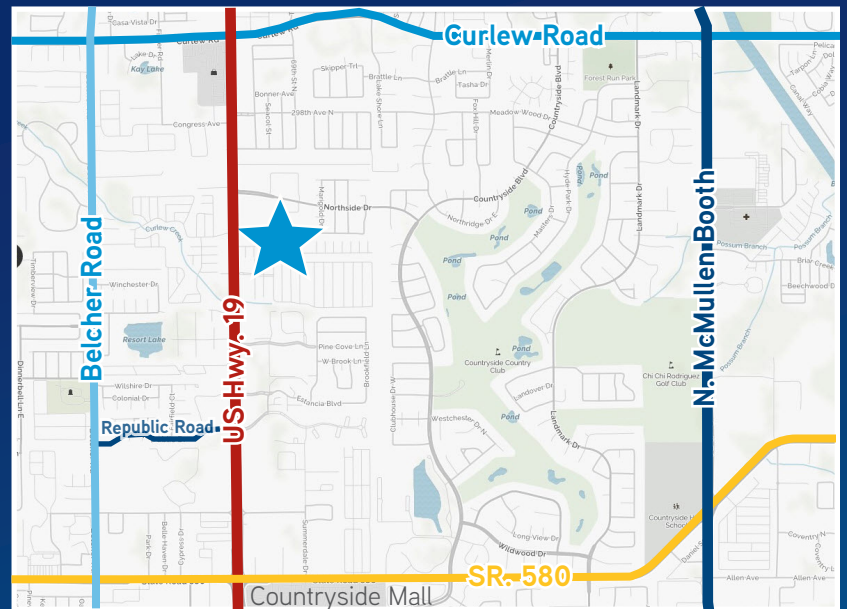
Office Space For Lease

Northside Square

Three-story office building containing 49,939 RSF

ALAN FELDSHUE
MANAGING DIRECTOR | OFFICE SERVICES
727.442.7296
alan.feldshue@colliers.com

MELANIE JACKSON, CCIM
DIRECTOR | OFFICE SERVICES
727.442-7188
melanie.jackson@colliers.com



Features

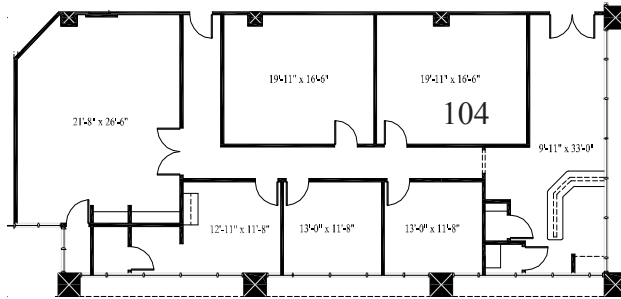
- Located between Countryside Mall and Curlew Road
- Parking ratio of 4/1,000 SF
- Highly visible location
- Signage available on US Highway 19
- Onsite banking & restaurants (Bob Evans & Olive Garden)
- 795 SF to 2,938 SF available
- Lease rate \$17.50 - \$18.50/SF, full service



Northside Square > Availabilities

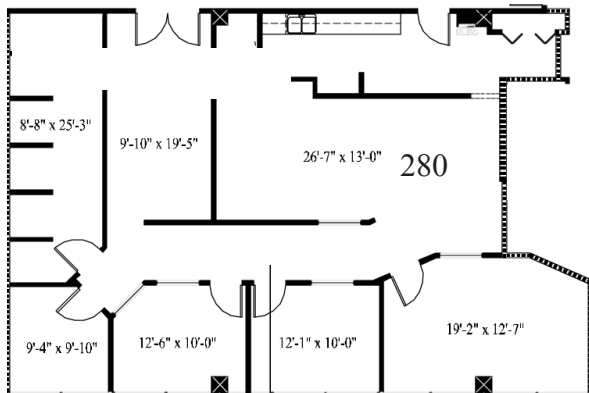
First Floor

> Suite 104 - 2,938 SF



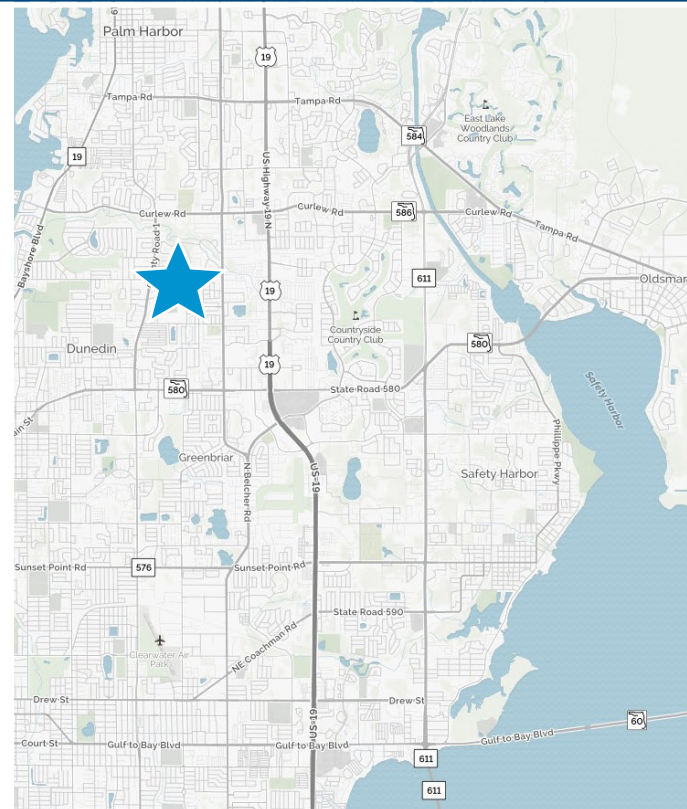
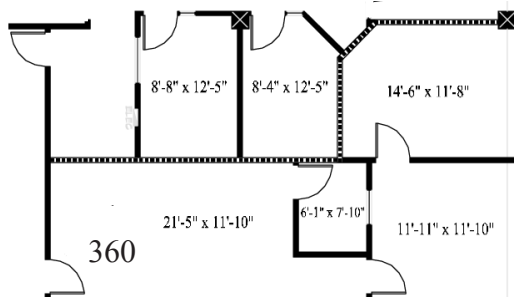
Second Floor

> Suite 280 - 2,073 SF



Third Floor

> Suite 360 - 795 SF



Contact Us

ALAN FELDSHUE
MANAGING DIRECTOR | OFFICE SERVICES
727.442.7296
alan.feldshue@colliers.com

MELANIE JACKSON, CCIM
DIRECTOR | OFFICE SERVICES
727.442.7188
melanie.jackson@colliers.com

This document/email has been prepared by Colliers International for advertising and general information only. Colliers International makes no guarantees, representations or warranties of any kind, expressed or implied, regarding the information including, but not limited to, warranties of content, accuracy and reliability. Any interested party should undertake their own inquiries as to the accuracy of the information. Colliers International excludes unequivocally all inferred or implied terms, conditions and warranties arising out of this document and excludes all liability for loss and damages arising there from. This publication is the copyrighted property of Colliers International and /or its licensor(s). © 2016. All rights reserved. This communication is not intended to cause or induce breach of an existing listing agreement.



COLLIERS INTERNATIONAL
311 Park Place Blvd. Suite 600
Clearwater, FL 33759
727.44.7184
www.colliers.com