

2.3 ACRES AVAILABLE FOR SALE

11336 S. DOTY AVE, CHICAGO, IL



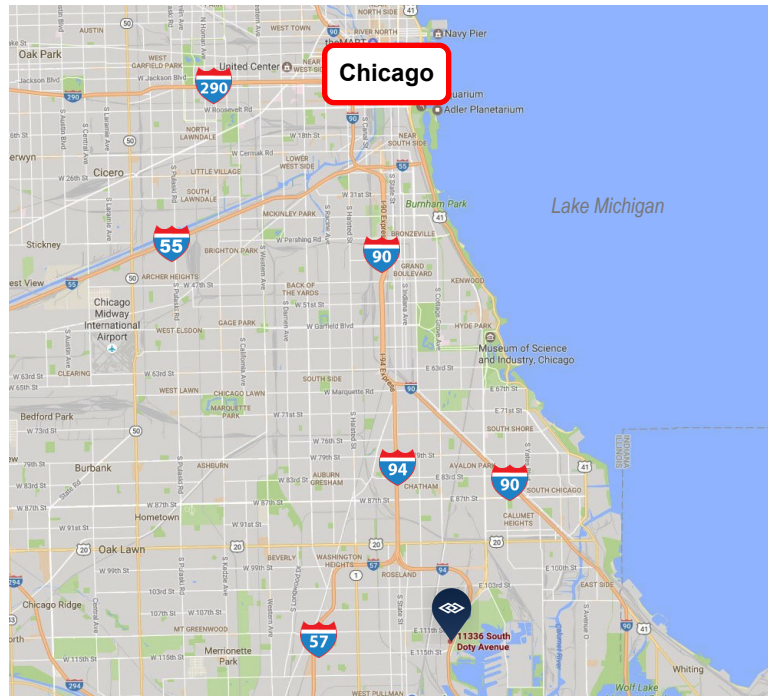
LAND SITE: 2.3 acres/101,000 square feet

REAL ESTATE TAXES: \$4,181.90 (2015 paid in 2016)

SALE PRICE:
~~\$725,000 (\$7.18 psf)~~
~~\$650,000 (\$6.44 psf)~~
\$625,000 (\$6.19 psf)

FEATURES

- Access to Interstate 94 / Bishop Ford Freeway
- Approximately 2 blocks from Pullman Park, a 200-acre mixed use development
- **Estimated traffic count of 163,000 vehicles per day**
- Current zoning of M3-3 (manufacturing/ industrial, commercial, public & civic facility)
- **Enterprise & Opportunity Zone**



FOR ADDITIONAL INFORMATION, PLEASE CONTACT:

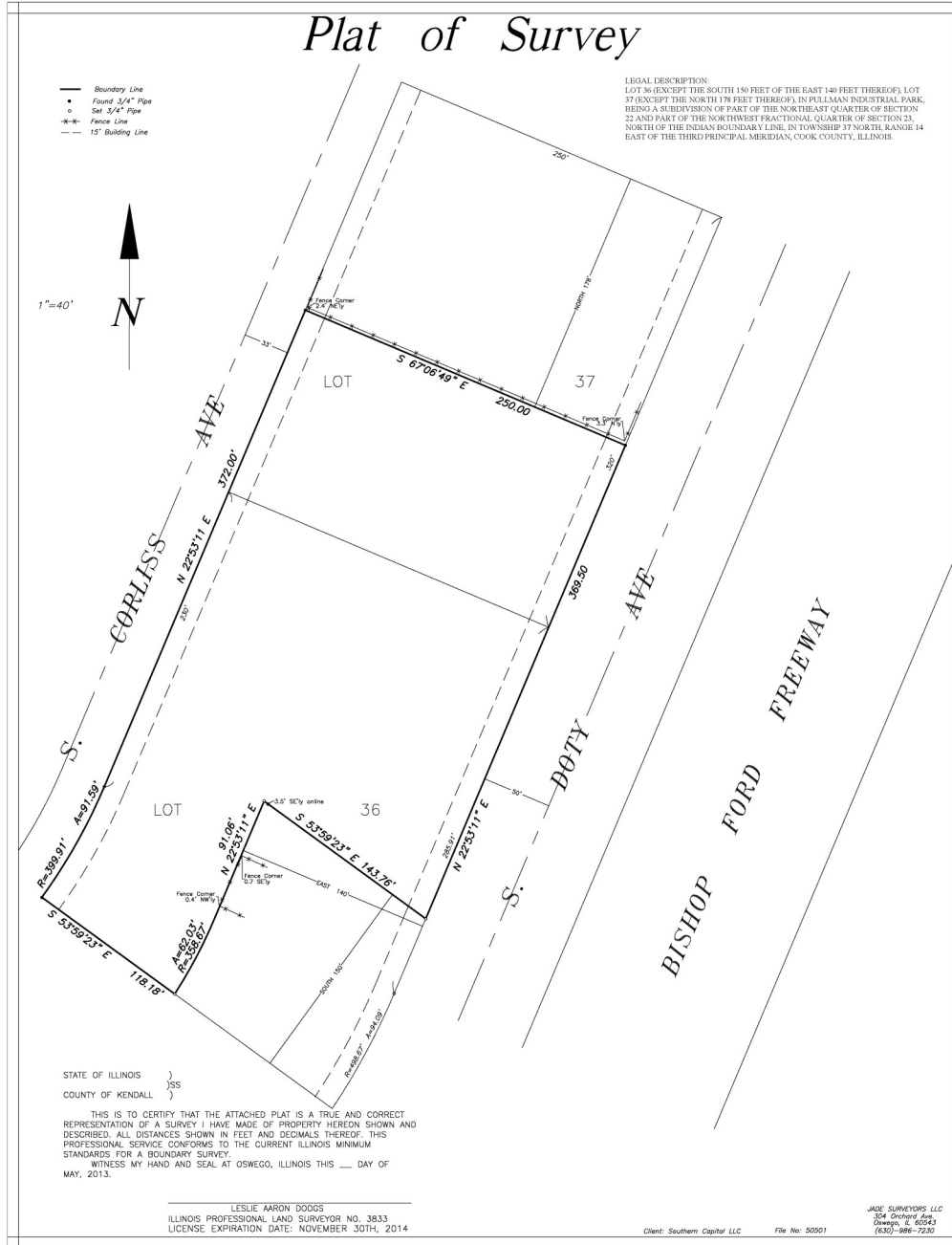
JEFFREY J. PROVENZA
 Vice President
jprovenza@darwinrealty.com



R E A L T Y

2.3 ACRES AVAILABLE FOR SALE

11336 S. DOTY AVE, CHICAGO, IL



FOR ADDITIONAL INFORMATION, PLEASE CONTACT:

JEFFREY J. PROVENZA
 Vice President
jprovenza@darwinrealty.com

970 N. Oaklawn Avenue, Suite 100 | Elmhurst, IL 60126 | Tel: 630-782-9520 | Fax: 630-782-9531 | www.darwinrealty.com

Submitted subject to error, change in status, or withdrawal without notice.