

# The Hub - Retail



## Downtown Phoenix Retail Space

Unique opportunity for affordable, urban retail suite. Join Valley Bar, Subway, Cornish Pastry, State Farm and Downtown Deli in the heart of downtown Phoenix. On the light rail near downtown condos and apartments, CityScape, Arizona State University Downtown Campus, Orpheum Theater, Herberger Theater, Heritage Square, Chase Field, the Phoenix Convention Center and Talking Stick Arena.

- **Unique downtown retail suite**
- **Located near many restaurant and service amenities**
- **Commute-friendly location**
- **6 Light Rail stops within 0.4 radius**
- **Nearest Light Rail and bus stop within 410 feet**

<b>YEAR BUILT</b>	1951
<b>BUILDING SIZE</b>	±28,000 SF
<b>AVAILABILITY</b> Suite 110	1,235 SF <i>Available 04/01/2021</i>
<b>LEASE RATE</b>	\$32.00/SF Full Service
<b>ZONING</b>	DC

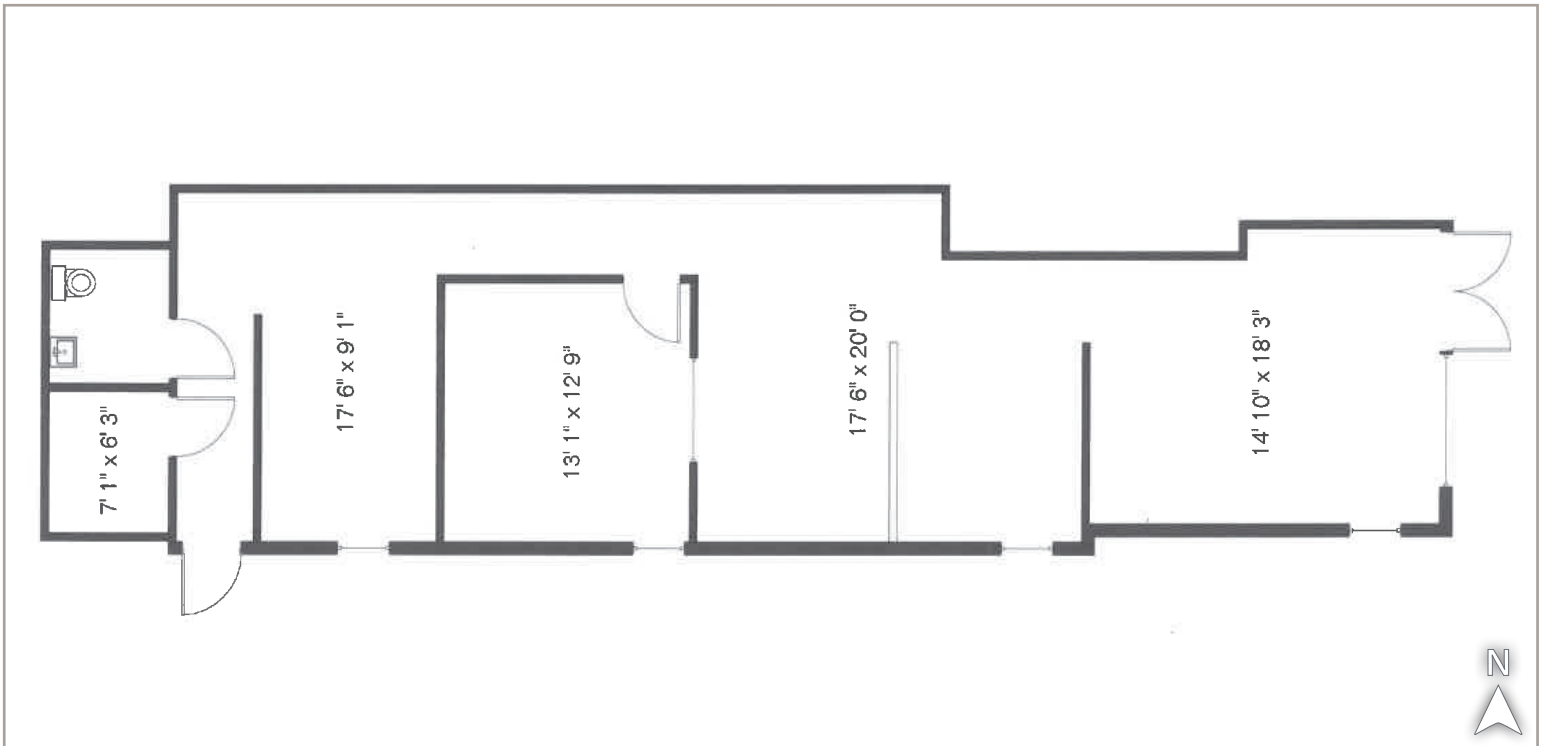
**Gail Brown, JD**  
D 480 423 7941  
C 602 316 2519  
gail.brown@avisonyoung.com

2720 E Camelback Road  
Suite 150  
Phoenix, AZ 85016  
avisonyoung.com

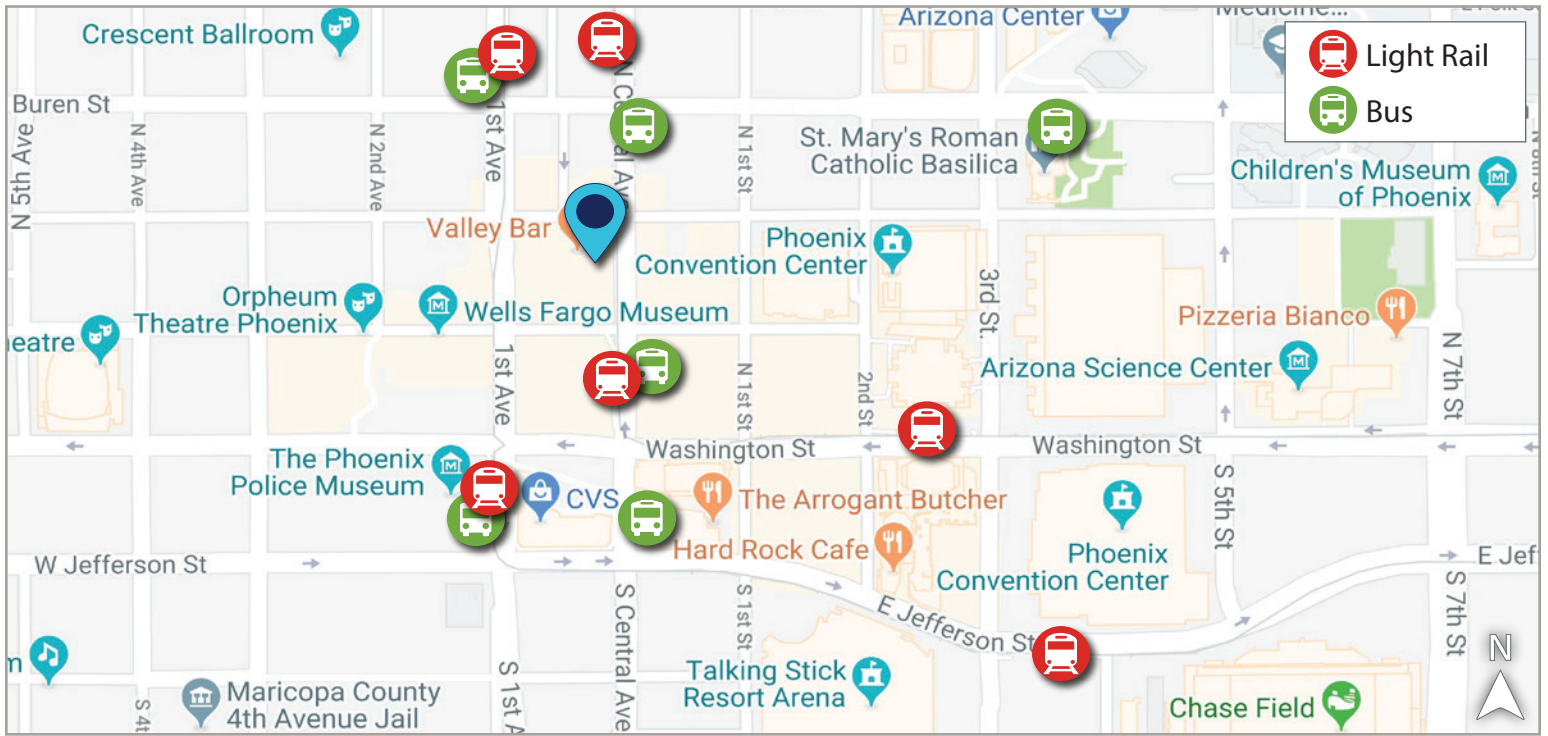
INTERIOR PHOTO



SUITE 110: 1,235 SF



### COMMUTER/AMENITIES MAP



### REGIONAL MAP

