

2400 - 2498 SAND HILL ROAD, MENLO PARK

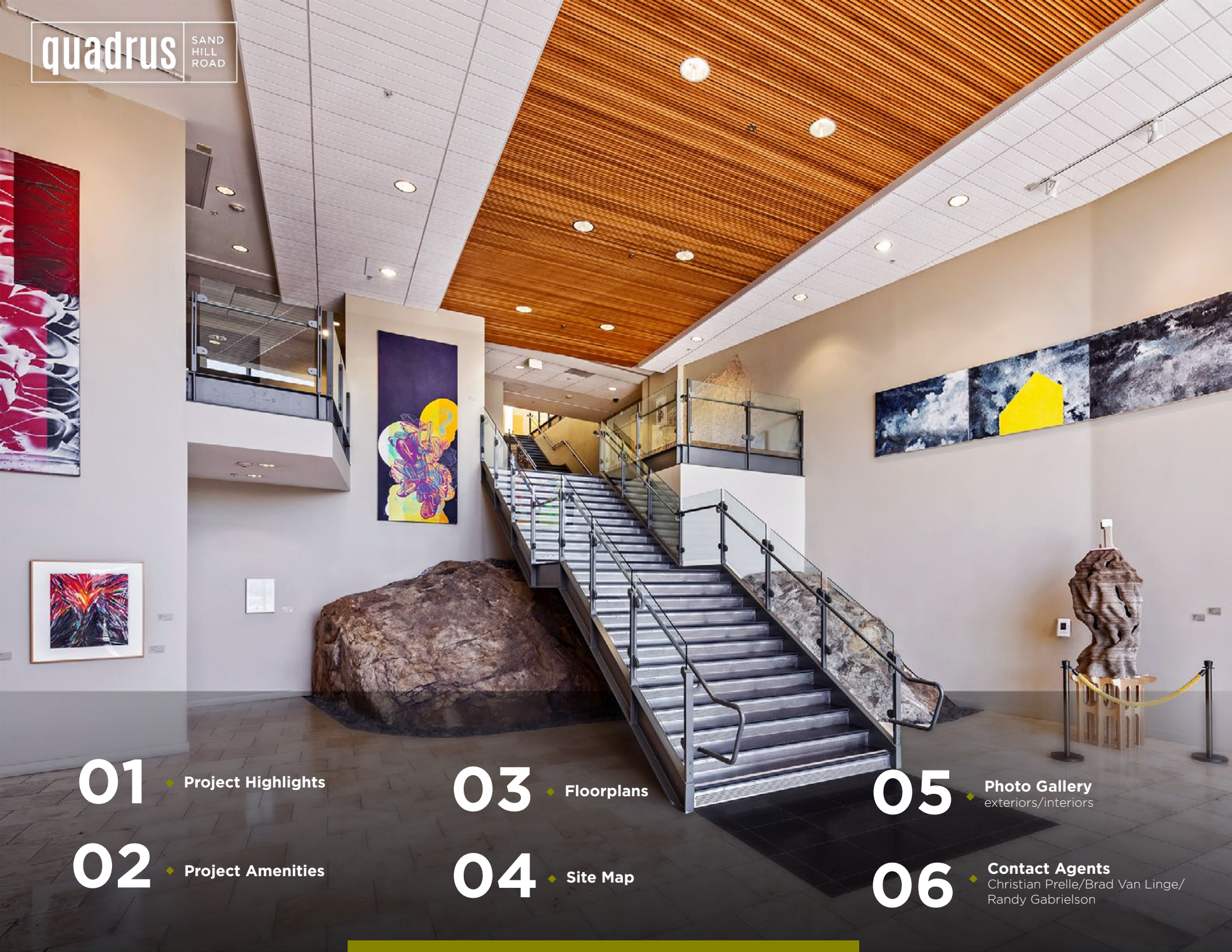
quadrus

SAND  
HILL  
ROAD



**BRAD VAN LINGE** ♦ 650.688.8522 ♦ BVanLinge@ngkf.com ♦ CA RE License #00832009  
**CHRISTIAN PRELLE** ♦ 650.688.8504 ♦ CPrelle@ngkf.com ♦ CA RE License #01888351  
**RANDY GABRIELSON** ♦ 650.688.8511 ♦ RGabrielson@ngkf.com ♦ CA RE License #00937630





**01** ♦ Project Highlights

**02** ♦ Project Amenities

**03** ♦ Floorplans

**04** ♦ Site Map

**05** ♦ Photo Gallery  
exteriors/interiors

**06** ♦ Contact Agents  
Christian Prella/Brad Van Linge/  
Randy Gabrielson

2400 - 2498

quadrus

SAND  
HILL  
ROAD

SAND HILL ROAD, MENLO PARK

## Project Highlights

- ◆ Prestigious 9 - Building Quadrus Complex
- ◆ Outstanding Views of the Bay, Peninsula and Foothills
- ◆ Outdoor Decks for Work, Lounging and Events
- ◆ Abundant Parking with EV Charging Stations
- ◆ Immediate Access to Hwy 280
- ◆ Zagster™ Bike Share Program On-Site for Exclusive Use by Tenants and Guests



## Available Space

### 2400 SAND HILL ROAD

Available January 1, 2019

Suite 100: ±4,174 SF

### 2420 SAND HILL ROAD

Available May 1, 2019

Suite 204: ±1,695 SF

### 2440 SAND HILL ROAD

Available May 1, 2019

Suite 302: ±9,397 SF

Available January 1, 2019

Suite 200: ±7,784 SF

 DIVCOWEST

 Newmark  
Knight Frank

## Project **Amenities**

- ◆ Fitness Center with Locker Rooms
- ◆ Quadrus Cafe
- ◆ Quadrus Conference Center
- ◆ Beautiful Wooded Environment with Over 800 Trees, Flower Beds and Walking Paths
- ◆ Sport Court
- ◆ Home of the Anderson Art Collection, One of the World's Most Outstanding Collections of 20th Century American Art
- ◆ Nearby Amenities Include the Rosewood Hotel and Madera Restaurant, Sharon Heights Shopping Center, The Stanford Dish Hiking Trail, and Stanford Shopping Center

## Quadrus Sand Hill

is Situated on a  
**20 ACRE SITE** with  
mature landscaping and  
**attractive view**  
corridors...



2400 - 2498

**quadrus**

SAND  
HILL  
ROAD

SAND HILL ROAD, MENLO PARK



RECENT QUADRUS TENANT IMPROVEMENTS



2400 - 2498

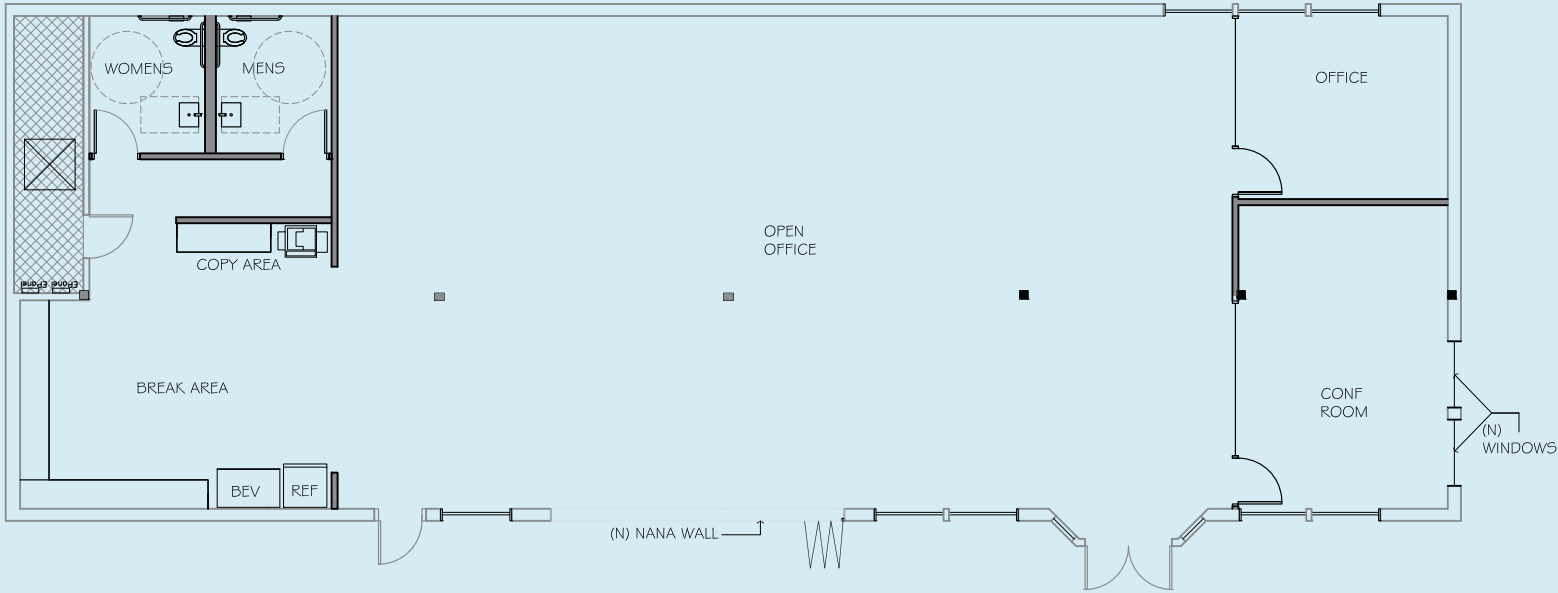
**quadrus** SAND HILL ROAD

SAND HILL ROAD, MENDLO PARK



# FloorPlans

## FULL RENOVATION UNDERWAY



**±4,174** sf | Suite 100  
2400 SAND HILL ROAD

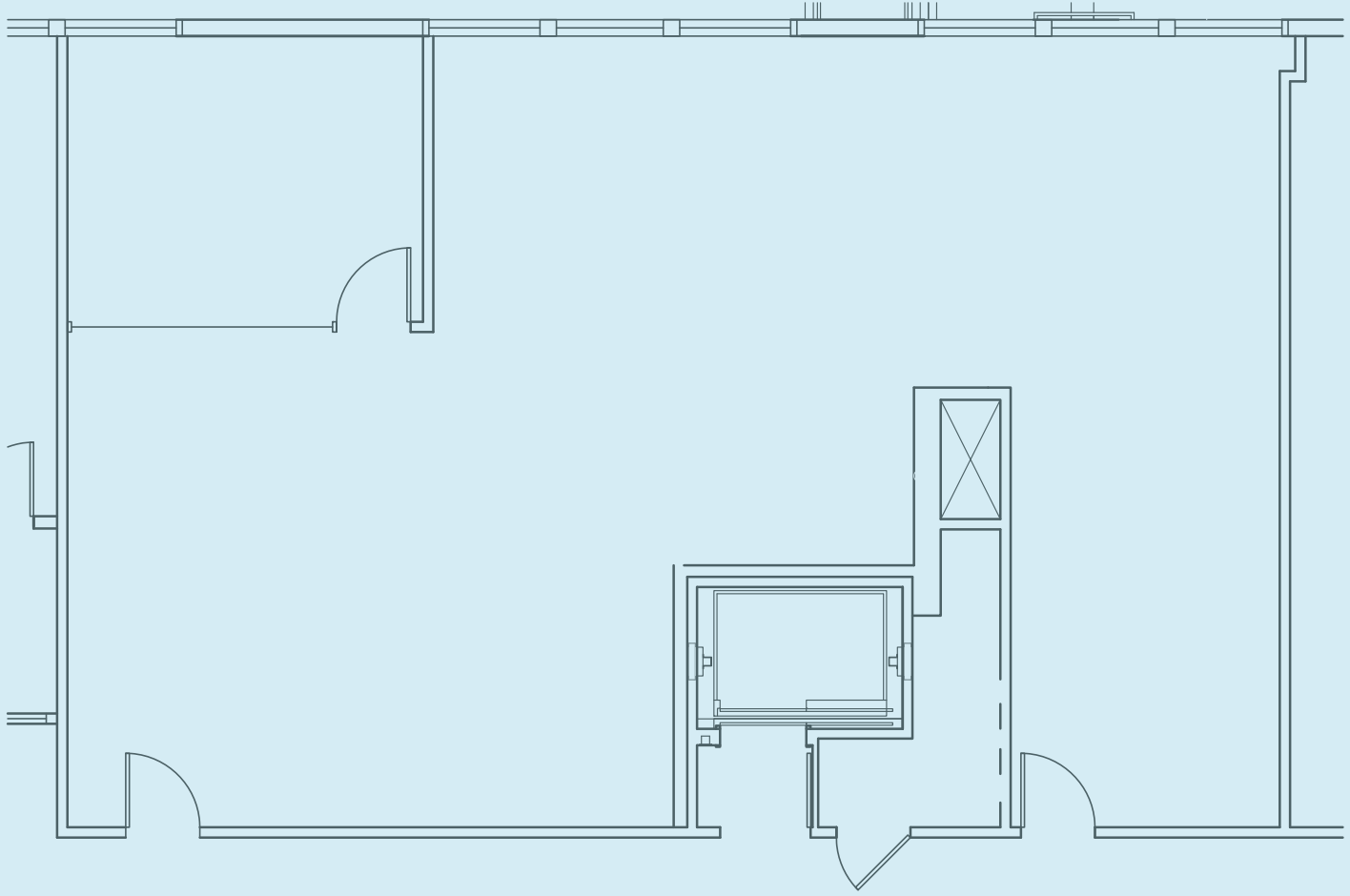
2400 - 2498

**quadrus** SAND HILL ROAD

SAND HILL ROAD, MENLO PARK



# Floor Plans



**±1,695** sf | Suite 204  
2420 SAND HILL ROAD

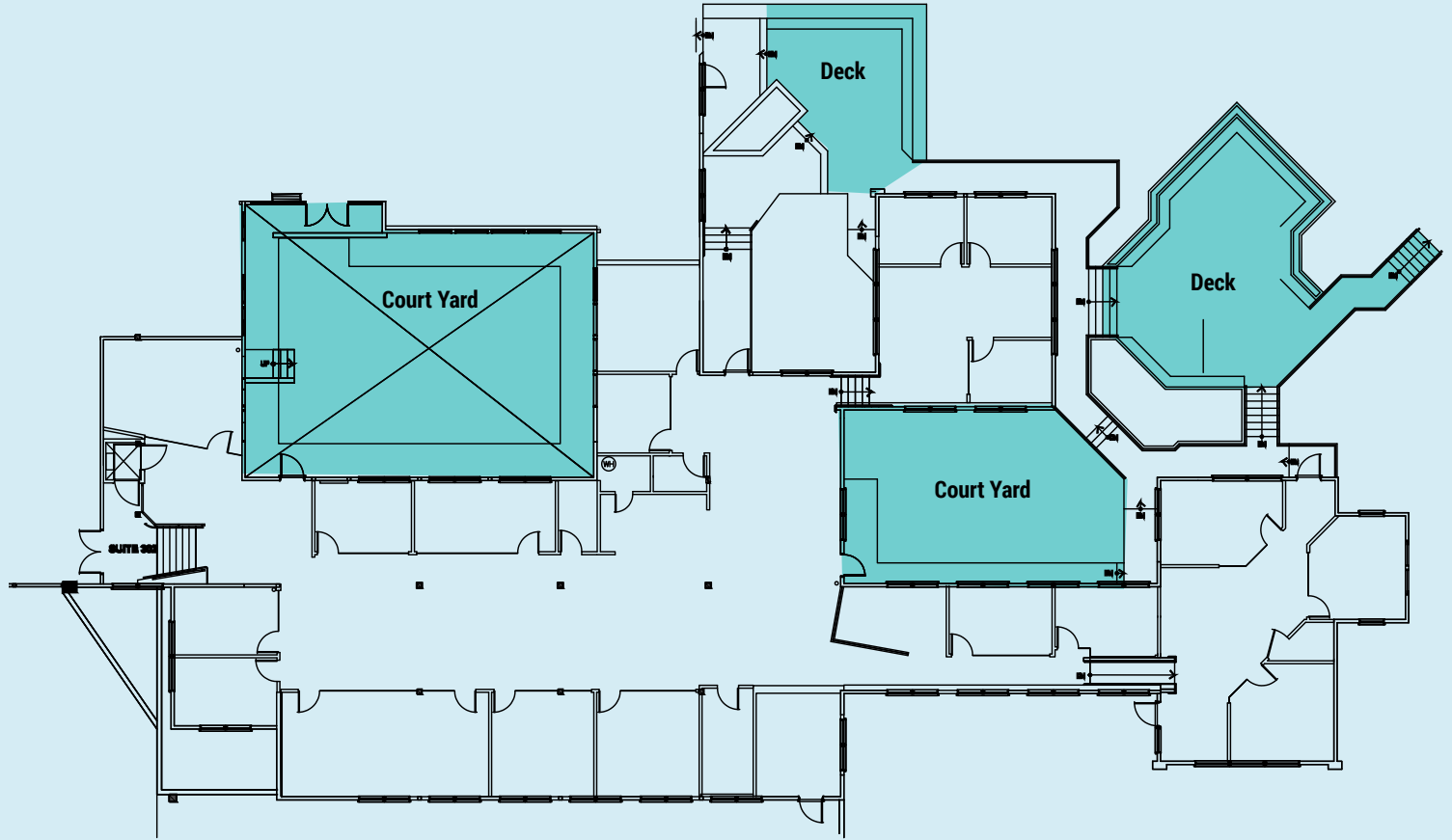
2400 - 2498

**quadrus** SAND HILL ROAD

SAND HILL ROAD, MENDOTO PARK



# Floor Plans



**±9,397** sf | Suite 302  
2440 SAND HILL ROAD



2400 - 2498

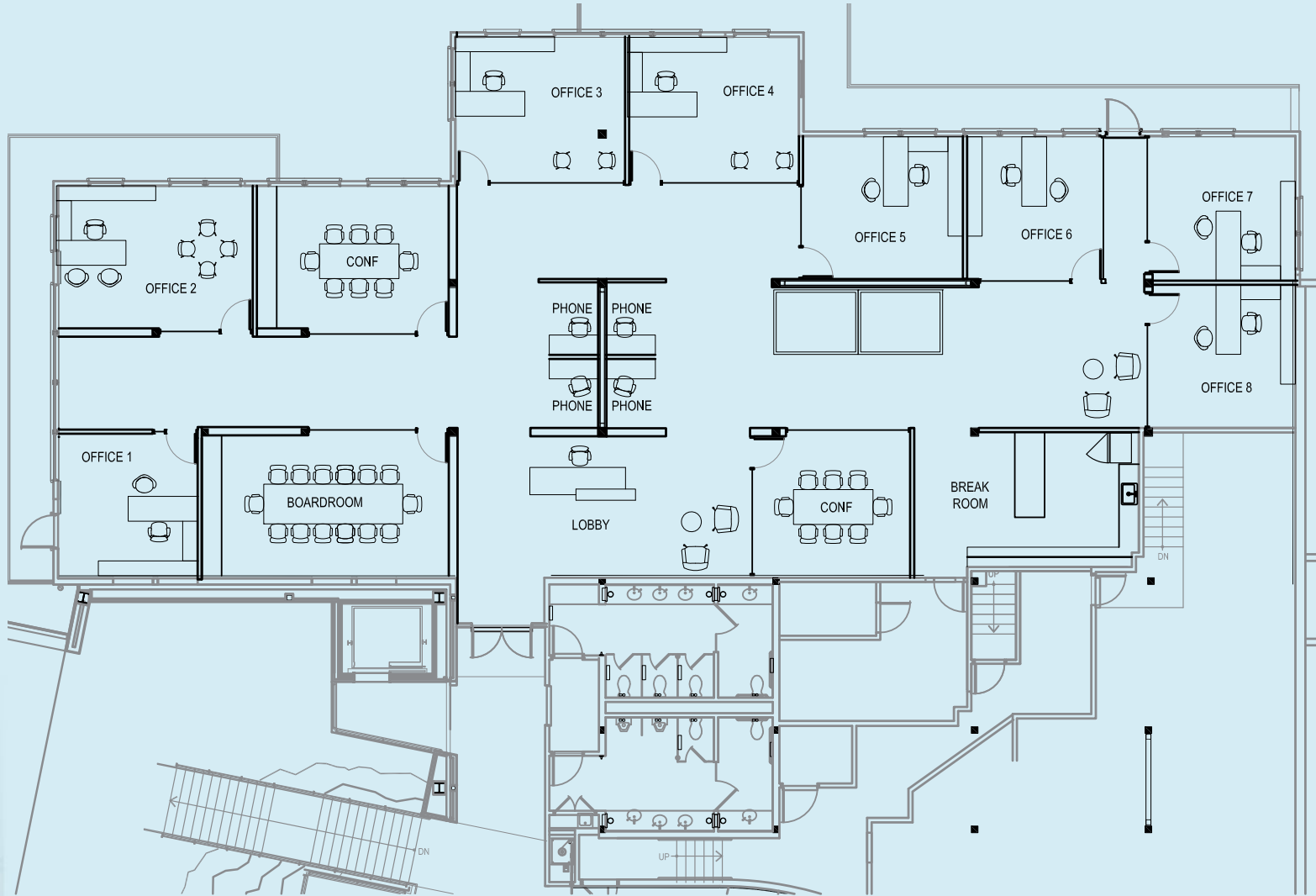
**quadrus** SAND HILL ROAD

SAND HILL ROAD, MENDLO PARK



# FloorPlans

## HYPOTHETICAL FLOOR PLAN



**±7,784** sf | Suite 200  
2440 SAND HILL ROAD

2400 - 2498

**quadrus**

SAND HILL ROAD

SAND HILL ROAD, MENLO PARK

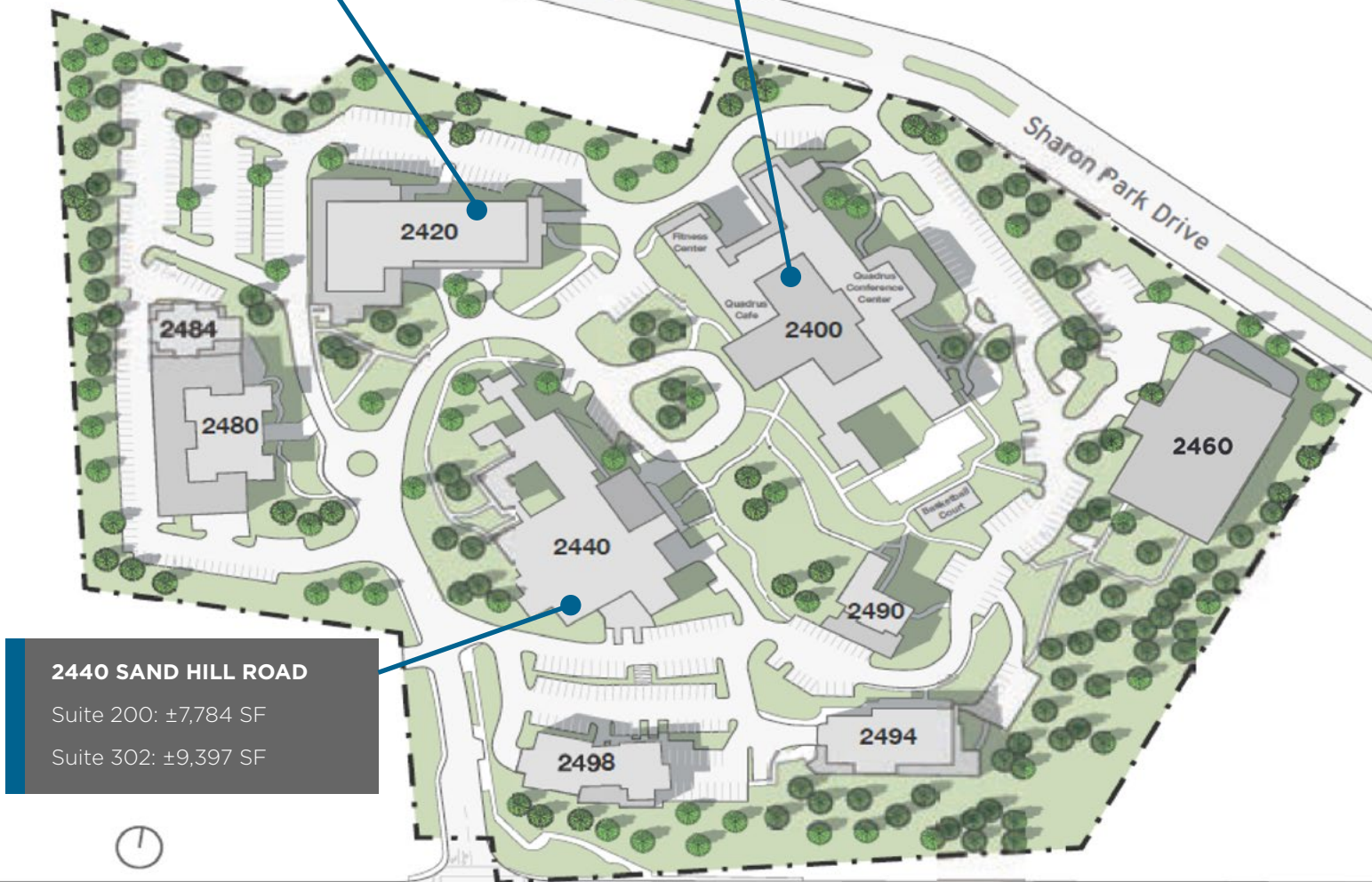
# SitePlan

**2420 SAND HILL ROAD**

Suite 204: ±1,695 SF

**2400 SAND HILL ROAD**

Suite 100: ±4,174 SF



**2440 SAND HILL ROAD**

Suite 200: ±7,784 SF

Suite 302: ±9,397 SF



San Francisco  
San Jose  
Rosewood Hotel

Sand Hill Road

Stanford University  
Stanford Shopping Center





2400 - 2498

**quadrus** SAND HILL ROAD

SAND HILL ROAD, MENLO PARK



2400 - 2498

**quadrus**

SAND  
HILL  
ROAD

SAND HILL ROAD, MENLO PARK



# quadrus

SAND  
HILL  
ROAD

FOR ANY QUESTIONS AND TO TOUR QUADRUS, PLEASE CALL

**Brad Van Linge**

Senior Managing Director  
650.688.8522  
BVanLinge@ngkf.com  
CA RE License #00832009

**Christian Prella**

Managing Director  
650.688.8504  
CPrella@ngkf.com  
CA RE License #01888351

**Randy Gabrielson**

Executive Vice President  
650.688.8511  
RGabrielson@ngkf.com  
CA RE License #00937630

245 LYTTON AVENUE, SUITE 150, PALO ALTO, CA

The distributor of this communication is performing acts for which a real estate license is required. The information contained herein has been obtained from sources deemed reliable but has not been verified and no guarantee, warranty or representation, either express or implied, is made with respect to such information. Terms of sale or lease and availability are subject to change or withdrawal without notice. 16-0202.11/18

