



NEW LISTING

Property Highlights

FOR SALE: \$1,295,000

- **36,677 SF** retail building
- Flexible enough to be developed into multi-unit spaces or remain as one building
- Acres- 3.68
- Frontage is 355.43'
- Depth is 325.02'
- New roof 2012
- Ceiling Height 18'
- North of Lafayette Road, 1/4 mile west of South Court Street, 3 blocks south of Historic Medina Square



LISTING AGENTS

MICHELLE MASICA
Michelle@GerspacherGroup.com

STEVE MASICA, CCIM
Steve@GerspacherGroup.com

SARAH COMBS
Sarah@GerspacherGroup.com

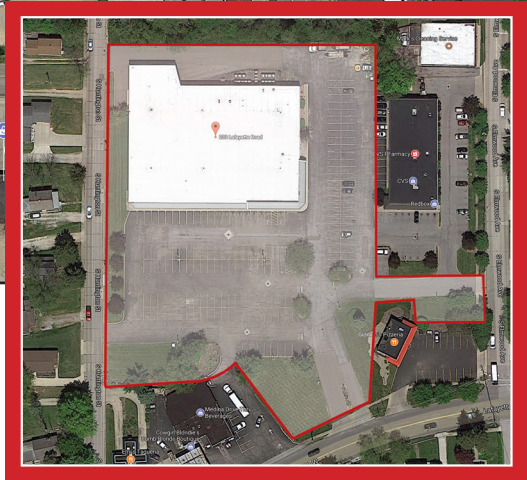
330.722.5002

GERSPACHER REAL ESTATE GROUP

5164 Normandy Park Drive, Suite 285
Medina, OH 44256

P: (330) 722-5002 | F: (330) 723-6330





Daily Traffic Count of **13,127**

DEMOGRAPHICS

	1 Mile	3 Miles	5 Miles
Population	9,567	39,348	56,313
Number of Households	4,404	15,951	22,894
Annual Income	\$50,681	\$69,409	\$75,525

The information contained herein is from sources deemed reliable but no warranty or representation is made to the accuracy thereof.