

CVS PHARMACY SUBLEASE OPPORTUNITY



3101 White Plains Road, Bronx, NY



Location: Southeast corner of Burke Avenue and White Plains Road

Size: 16,674 square feet

Frontage: White Plains Road and Burke Avenue

Possession: Immediate through 1/31/33

Rent: By request

Taxes: \$17.00 per square foot

Comments: Available space for sublease from CVS/Pharmacy

Parking lot

Newly constructed

Entrance to 2 and 5 subway trains at Burke Avenue subway station directly in-front of store

Neighbors: Burger Barn, Pioneer Supermarket, Plus Discount, Metro PCS, Rent-a-Center and Aarons

**Newmark Grubb
Knight Frank**
Retail

www.ngkf.com/retail

For further information, please contact our exclusive agents:

Joseph Colista

212.372.2191

jcolista@ngkf.com

Hymie Dweck

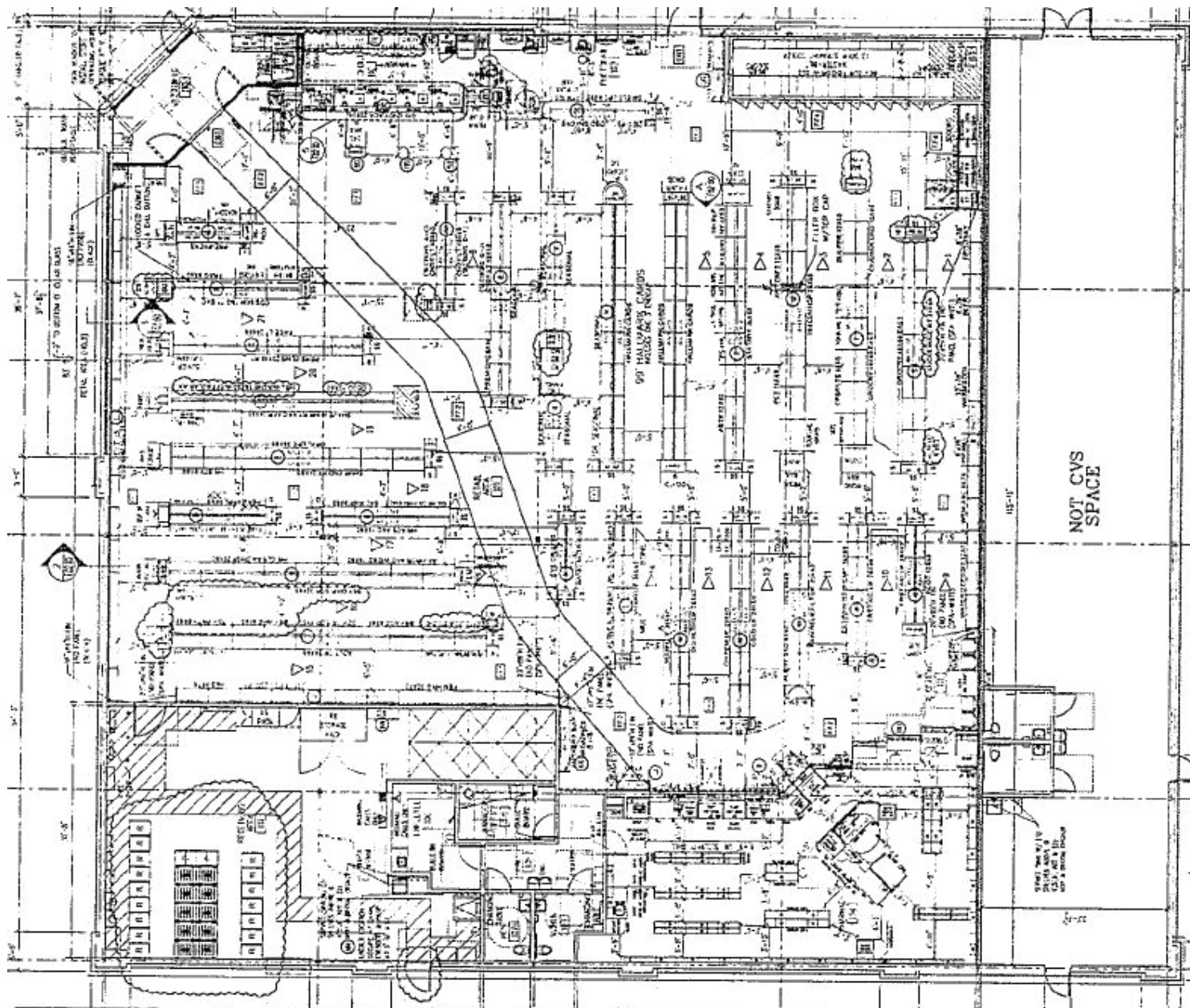
212.372.2060

hdweck@ngkf.com

CVS PHARMACY SUBLEASE OPPORTUNITY



3101 White Plains Road, Bronx, NY



Newmark Grubb
Knight Frank
Retail

www.ngkf.com/retail

For further information, please contact our exclusive agents:

Joseph Colista

212.372.2191

jcolista@ngkf.com

Hymie Dweck

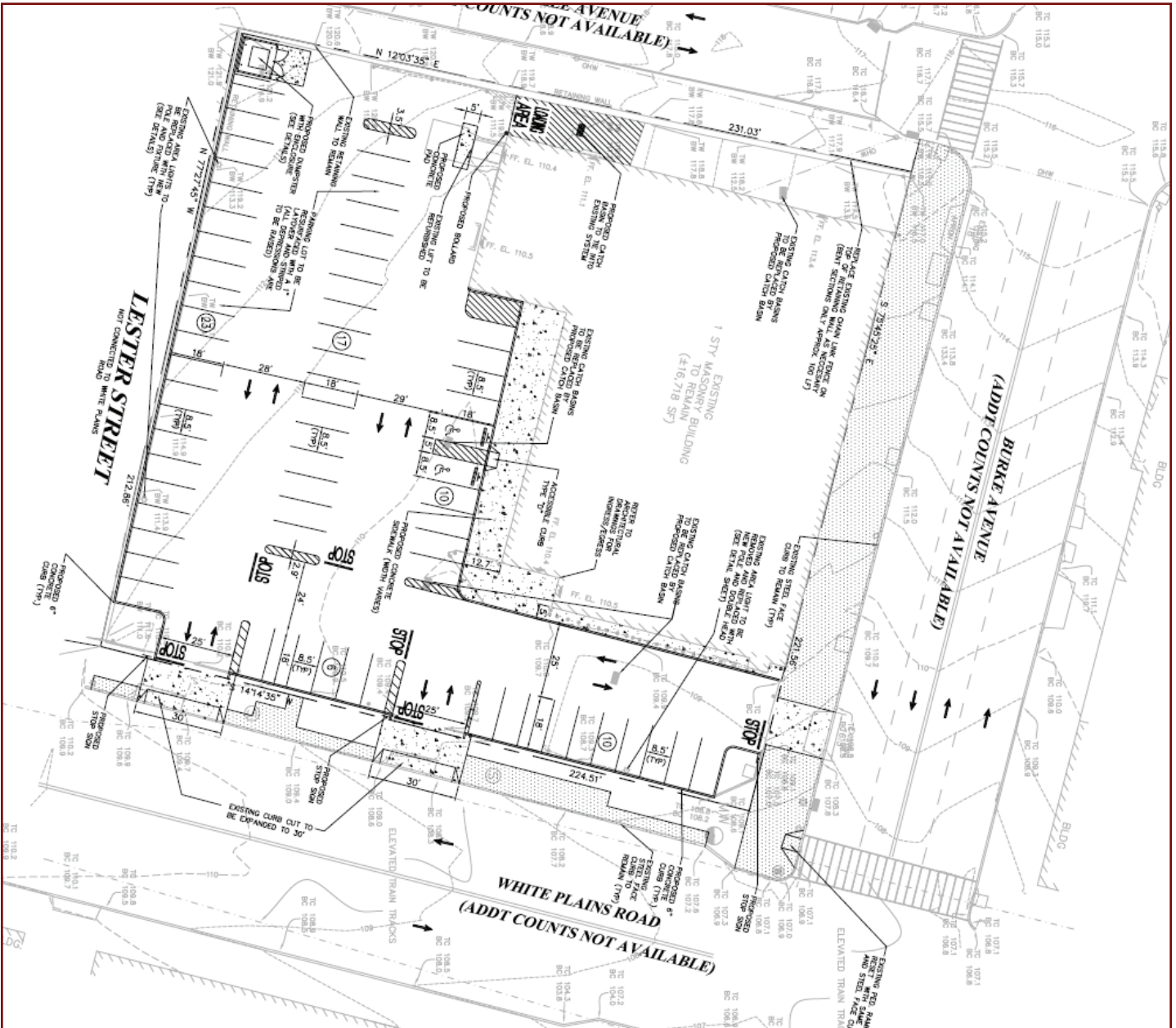
212.372.2060

hdweck@ngkf.com

CVS PHARMACY SUBLEASE OPPORTUNITY



3101 White Plains Road, Bronx, NY



Newmark Grubb
Knight Frank
Retail

www.ngkf.com/retail

For further information, please contact our exclusive agents:

Joseph Colista
Hymie Dweck

212.372.2191
212.372.2060