

Land For Sale

3003 Stacey Allison Way

3003 Stacey Allison Way, Woodburn, OR 97071



Price: \$1,100,000
 Lot Size: 1.25 AC
 Property Type: Land
 Property Sub-type: Retail (land)
 Listing ID: 18471226
 Last Updated: 5 days ago

[Find Out More...](#)

1 Lot Available

Lot n/a

Price: **\$1,100,000**
 Lot Size: **1.25 AC**
 Price/AC: \$880,000
 Lot Type: Retail (land)
 APN / Parcel ID: R14674
 Commission Split: 3%

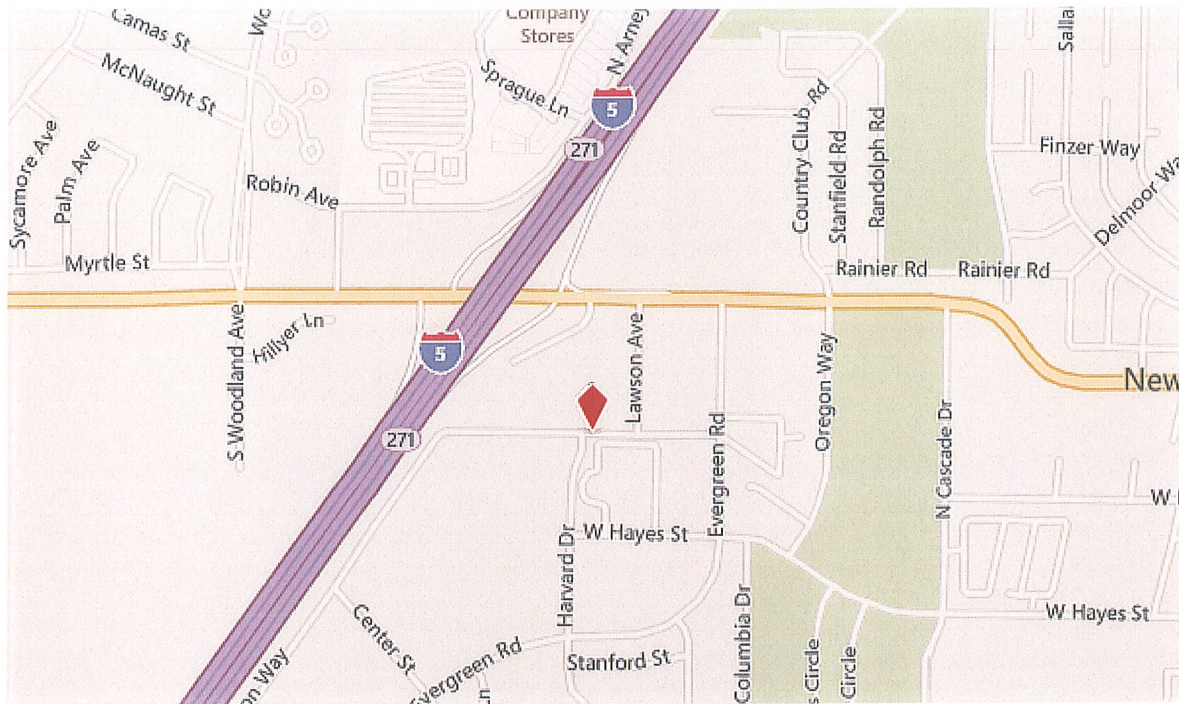
Level ground, city services and utilities to site. Near Woodburn Co. Stores, which generates over 4 million visitors a year. 177' X 336' irregular shaped lot.

Description

Level ground, city services and utilities to site. Near Woodburn Co. Stores, which generates over 4 million visitors a year. 177' X 336' irregular shaped lot.

Exceptional Location with I-5 visibility. Ideal for franchise location. Adjacent to Burger King, Taco Bell and Wal-Mart. Level ground, city services and utilities to site. Near Woodburn Co. Stores, which generates over 4 million visitors a year.

Map of 3003 Stacey Allison Way, Woodburn, OR 97071 (Marion County)

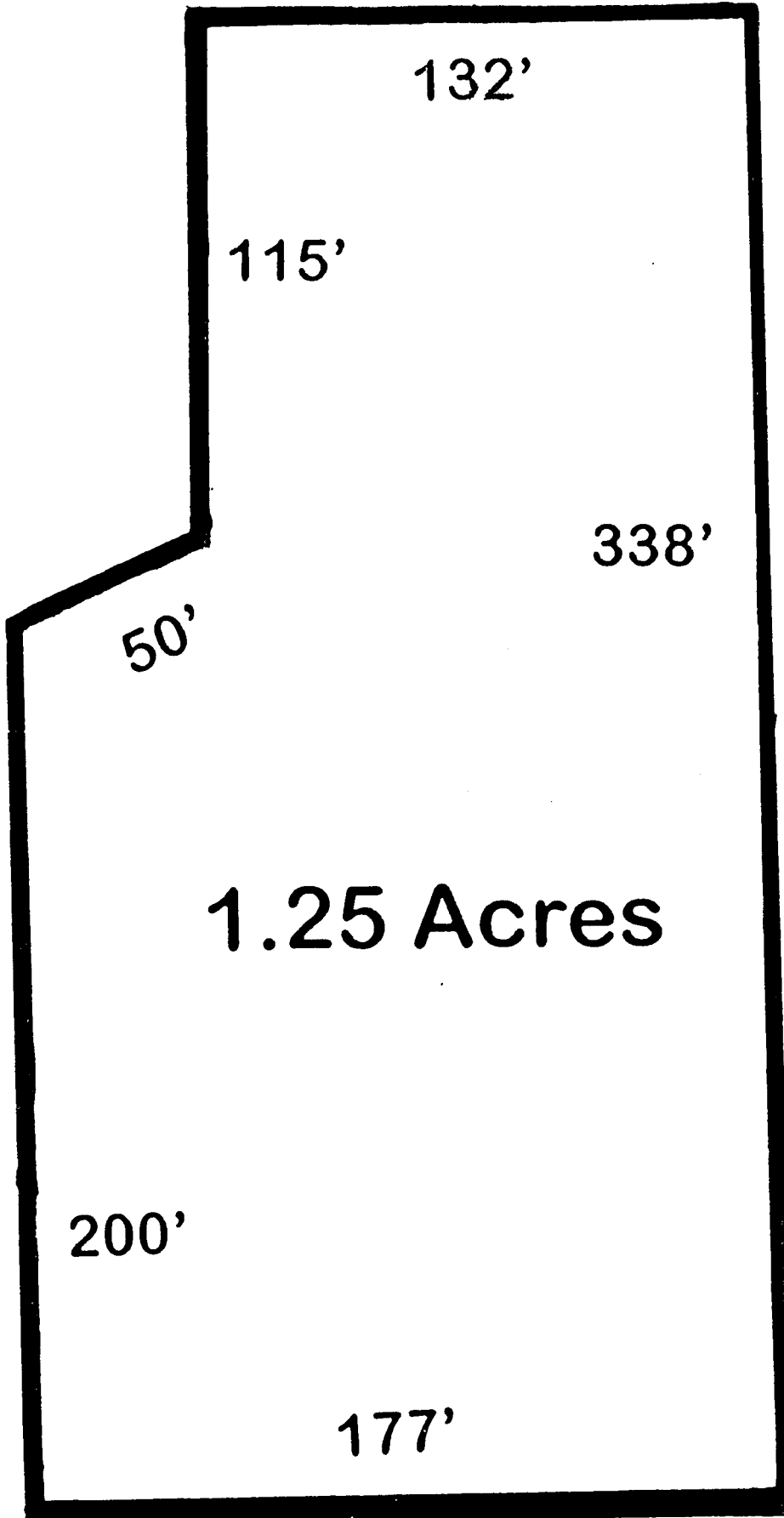




First American Title

Sentry Dynamics, Inc. and its customers make no representations, warranties or conditions, express or implied, as to the accuracy or completeness of information contained in this report.

geoAdvantage
www.geoadvantage.com 235.777.1252



132'

115'

338'

50'

1.25 Acres

200'

177'