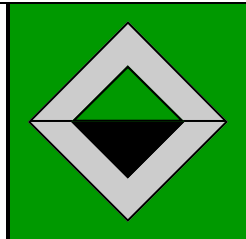


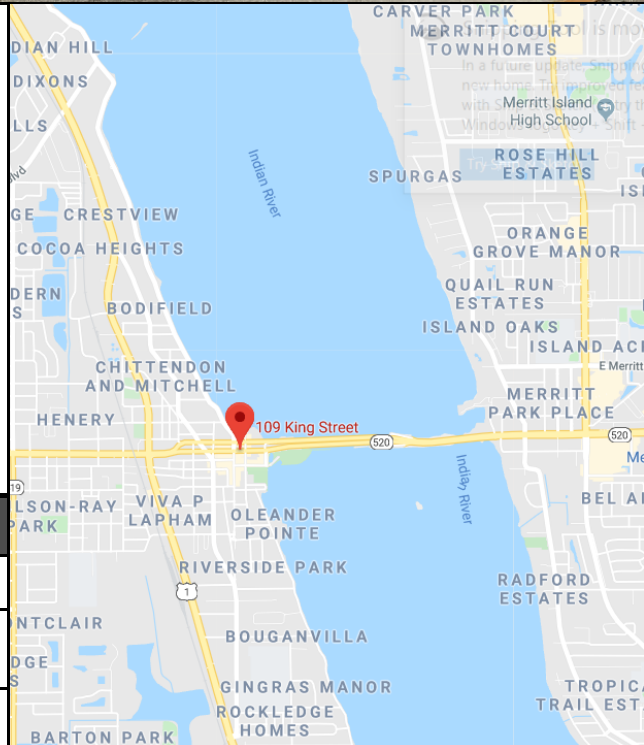
OFFICE FOR LEASE

COCOA VILLAGE

200 Brevard Avenue, Cocoa, FL 32922



- ▲ Prime Cocoa Village Location!
- ▲ 2,277 SF Office, Retail or Medical Use Space
- ▲ Corner of Brevard Avenue and King Street (SR 520)
- ▲ Great Access with High Visibility
- ▲ Parking Ratio of 5.23 per 1,000 SF
- ▲ Daily Traffic Counts of 20,910
- ▲ Walk to Shops, City Hall, Restaurants, Nearby Businesses & Entertainment
- ▲ \$15/SF/YR



Radius	1 Mile	3 Miles	5 Miles
2019 Population	3,919	51,432	96,485
2019 Average Household Income	\$74,306	\$62,310	\$74,429
Median Age	46.6	44.1	46.4



Information contained herein has been obtained from others and is considered to be reliable; however, a prospective purchaser, agent, or lessee is expected to verify all information to their satisfaction. We make no guarantee, warranty, or representations herein.

Licensed Real Estate Broker



Commercial

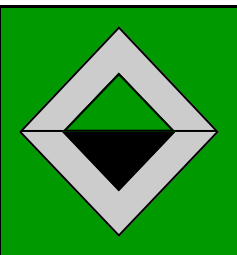
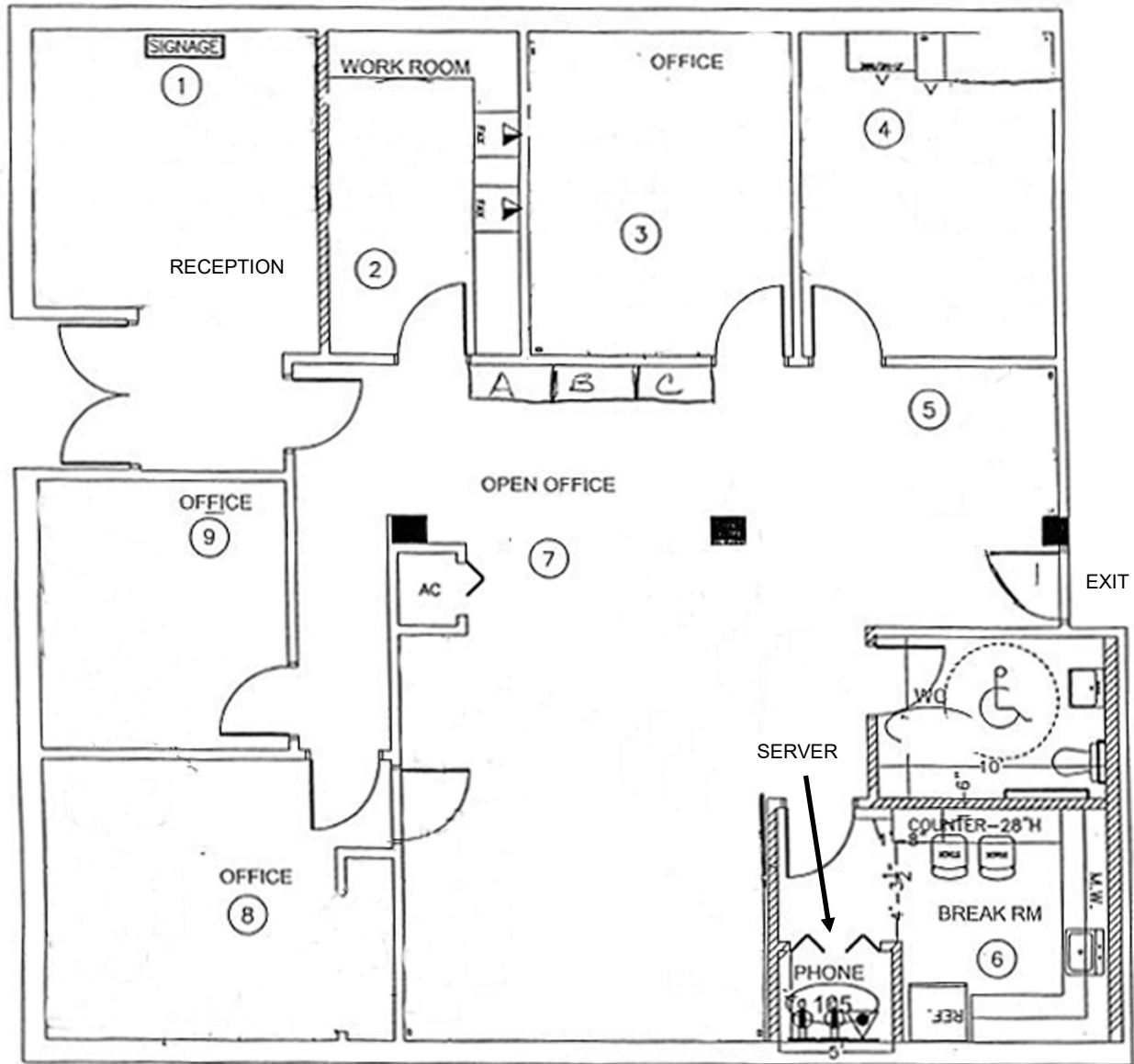
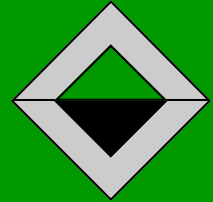
- ▲ Management
- ▲ Leasing
- ▲ Sales

Leasing Contact:
Alicya Simmons
 JM Real Estate, Inc.
 Office: 321.242.2882 ext. 211
 Cell: 407-399-0608
 Email: Alicya@JMRealEstate.com
WWW.JMREALESTATE.COM

OFFICE FOR LEASE

COCOA VILLAGE

200 Brevard Avenue, Cocoa, FL 32922



Information contained herein has been obtained from others and is considered to be reliable; however, a prospective purchaser, agent, or lessee is expected to verify all information to their satisfaction. We make no guarantee, warranty, or representations herein.

Licensed Real Estate Broker



Commercial

▲ Management

▲ Leasing

▲ Sales

Leasing Contact:

Alicya Simmons

JM Real Estate, Inc.

Office: 321.242.2882 ext. 211

Cell: 407-399-0608

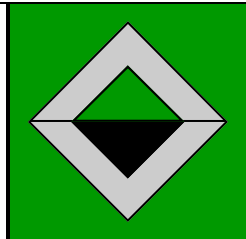
Email: Alicya@JMRealEstate.com

WWW.JMREALESTATE.COM

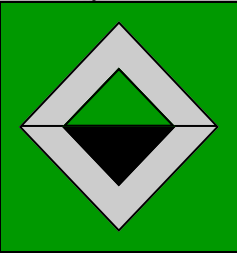
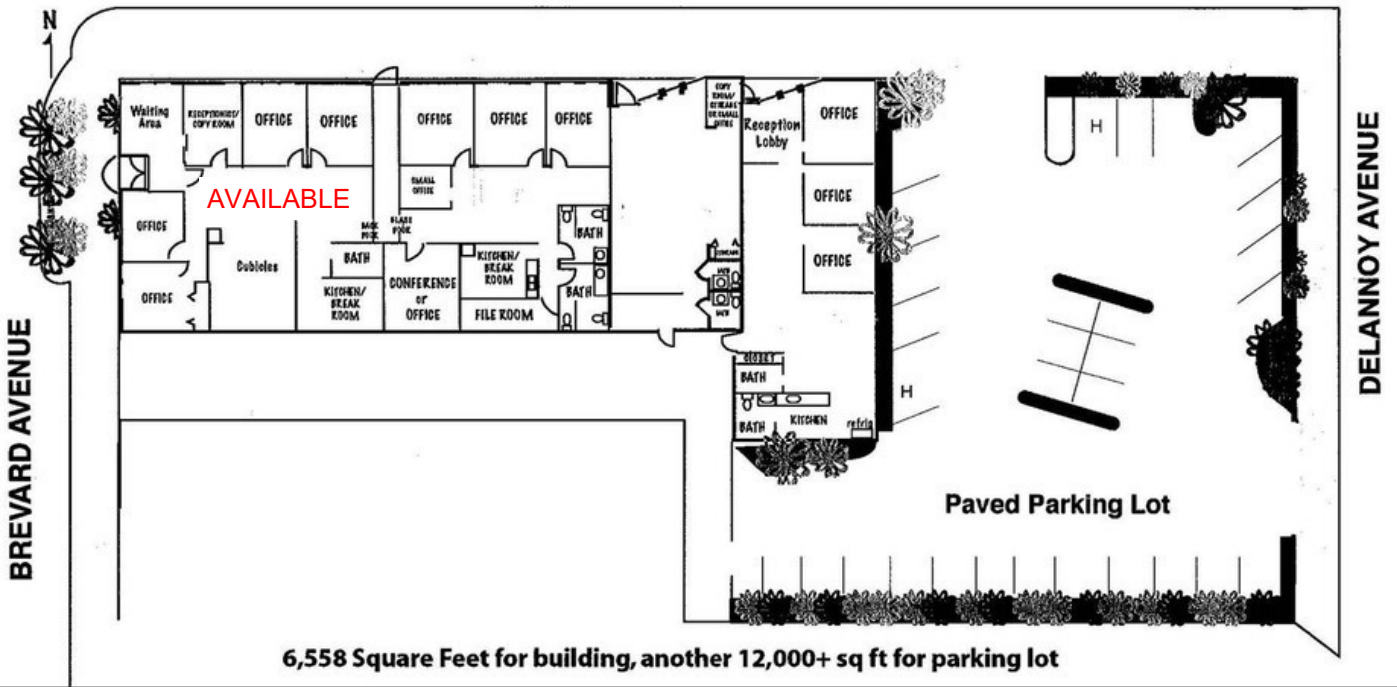
OFFICE FOR LEASE

COCOA VILLAGE

200 Brevard Avenue, Cocoa, FL 32922



SR520 East (main road to Beaches)



Information contained herein has been obtained from others and is considered to be reliable; however, a prospective purchaser, agent, or lessee is expected to verify all information to their satisfaction. We make no guarantee, warranty, or representations herein.

Licensed Real Estate Broker

Commercial

- ▲ Management
- ▲ Leasing
- ▲ Sales

Leasing Contact:
Alicya Simmons
 JM Real Estate, Inc.
 Office: 321.242.2882 ext. 211
 Cell: 407-399-0608
 Email: Alicya@JMRealEstate.com