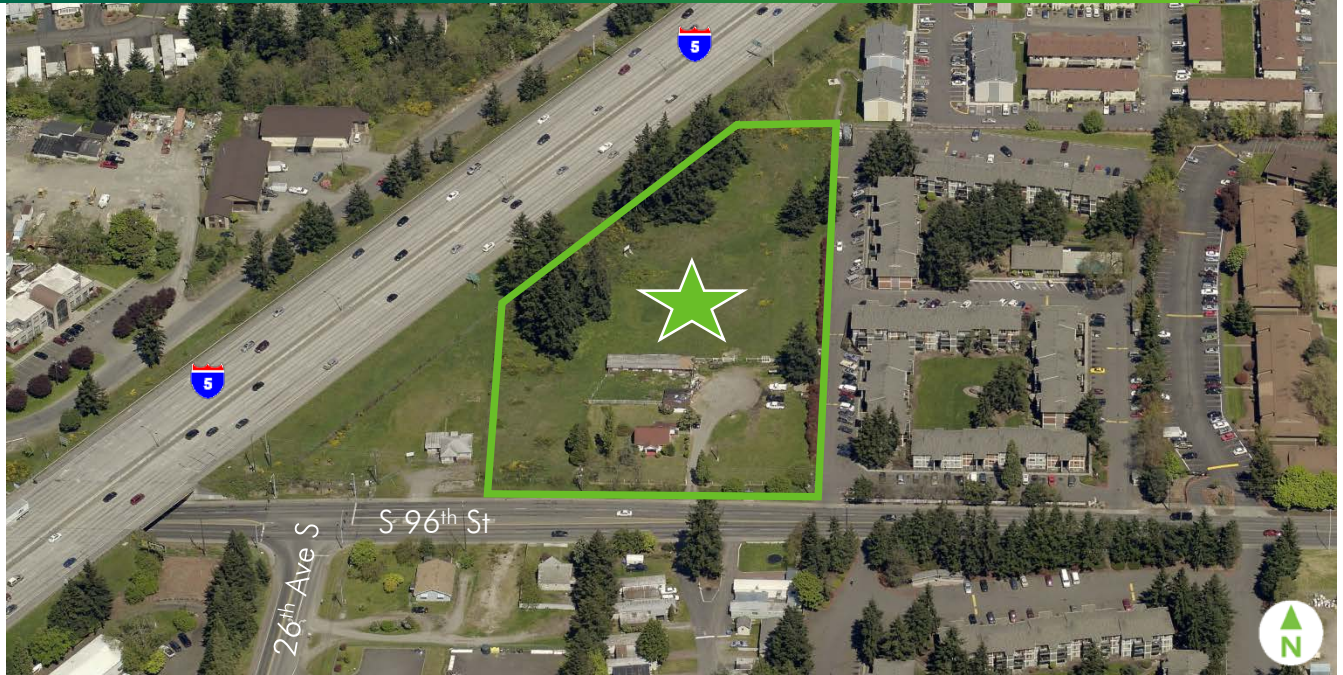


±3.73 ACRES FOR SALE

# I-5 FRONTAGE LAND AVAILABLE

2519 SOUTH 96<sup>TH</sup> STREET  
TACOMA, WASHINGTON



## PROPERTY INFORMATION

**PRICE: \$2,112,227 (\$13/SF)**

- + Size: 3.73 Acres (162,479 SF)
- + Zoning: CE (Community Employment) Pierce County
- + Features: ±400 feet of I-5 frontage



## CONTACT US

### KETNER SHEEAN

Senior Associate  
+1 253 596 0028  
ketner.sheean@cbre.com

CBRE  
1201 Pacific Avenue  
Suite, 1502  
Tacoma, WA 98402

## Traffic Counts

Front St S & 26 <sup>th</sup> Ave S	1,459 cars/day
96 <sup>th</sup> St S & 26 <sup>th</sup> Ave S	15,400 cars/day
I-5 & 96 <sup>th</sup> St S	168,000 cars/day

© 2016 CBRE, Inc. The information contained in this document has been obtained from sources believed reliable. While CBRE, Inc. does not doubt its accuracy, CBRE, Inc. has not verified it and makes no guarantee, warranty or representation about it. It is your responsibility to independently confirm its accuracy and completeness. Any projections, opinions, assumptions or estimates used are for example only and do not represent the current or future performance of the property. The value of this transaction to you depends on tax and other factors which should be evaluated by your tax, financial and legal advisors. You and your advisors should conduct a careful, independent investigation of the property to determine to your satisfaction the suitability of the property for your needs. Photos herein are the property of their respective owners and use of these images without the express written consent of the owner is prohibited. CBRE and the CBRE logo are service marks of CBRE, Inc. and/or its affiliated or related companies in the United States and other countries. All other marks displayed on this document are the property of their respective owners. mmp 07/11/16

[www.cbre.com/tacoma](http://www.cbre.com/tacoma)

**CBRE**