

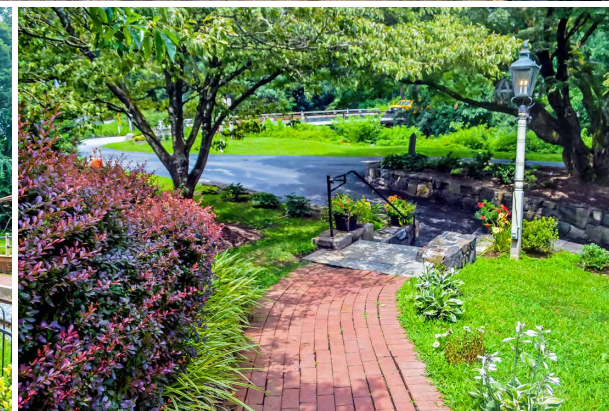
MULTI-USE RETAIL / RESIDENTIAL PROPERTY AVAILABLE

128 Glen Mills Rd | Glen Mills, PA 19342 | Delaware County

FOR SALE:
\$1,195,000.00

PROPERTY FEATURES

- ✓ ± 4,250 SF Building on ± 2.7 Acres Available For Sale
- ✓ This amazing multi-purpose property is nestled in a quaint section of Glen Mills, PA.
- ✓ The main building is a beautiful ± 4,250 SF Victorian style structure situated along a historic railroad line with ± 2.7 acres of picturesque landscape.
- ✓ The first floor and wine cellar could be used for Retail, or as a Tasting Room or a Winery. The second floor is currently used as a residence, and there is also a spacious third floor that is unfinished.
- ✓ There is a small detached building that could also be used for retail, and a detached two car garage.



CONTACT US

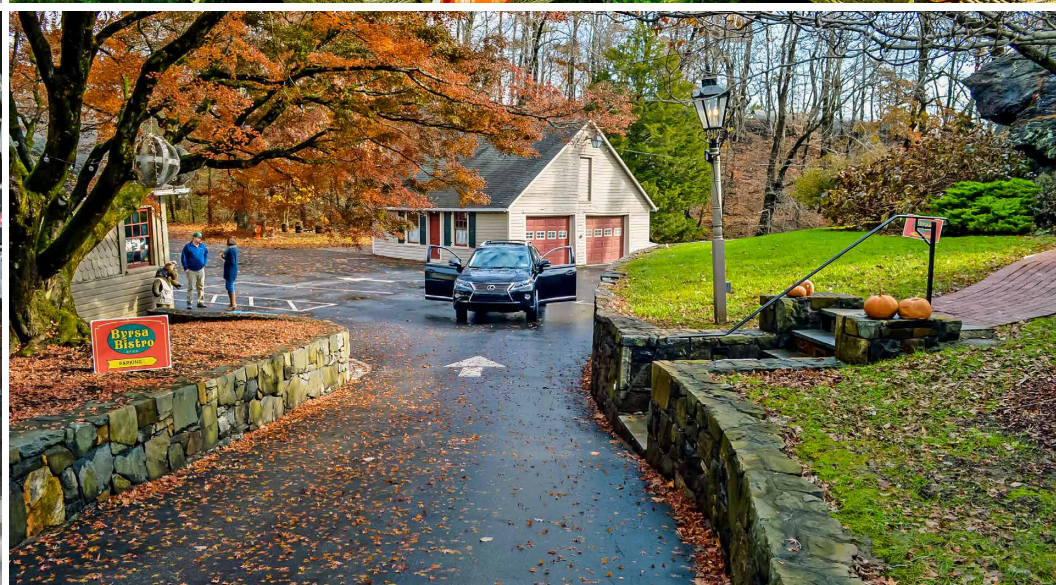
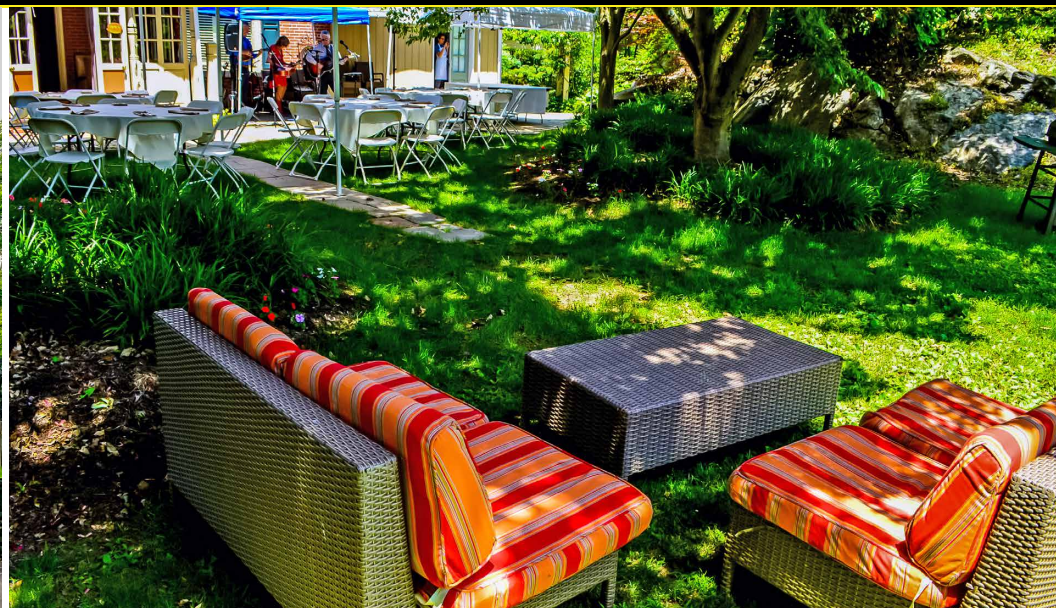
STEVE DIBATTISTA
Phone: 610.359.1100
Cell: 610.368.2801
Email: sdibattista@zmcre.com

JEFFREY B. DOWD
Phone: 610.359.1100
Cell: 610.842.4383
Email: jdowd@zmcre.com

1306 Wilmington Pike, Suite A-2
West Chester, PA 19382
610.359.1100
www.zmcre.com


ZOMMICK MCMAHON
COMMERCIAL REAL ESTATE

EXTERIOR PROPERTY PHOTOS: 128 GLEN MILLS RD, GLEN MILLS, PA 19342



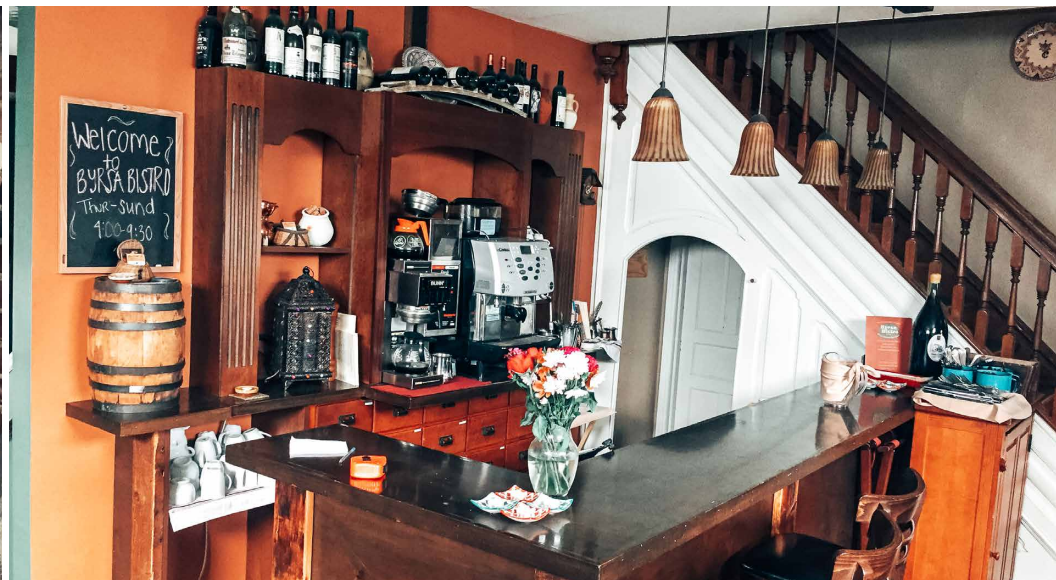
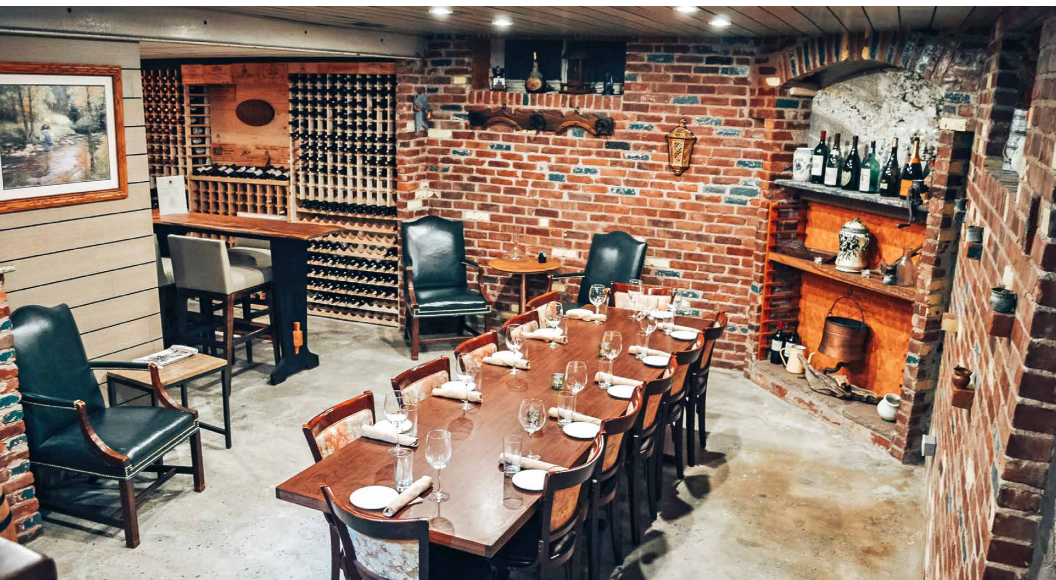
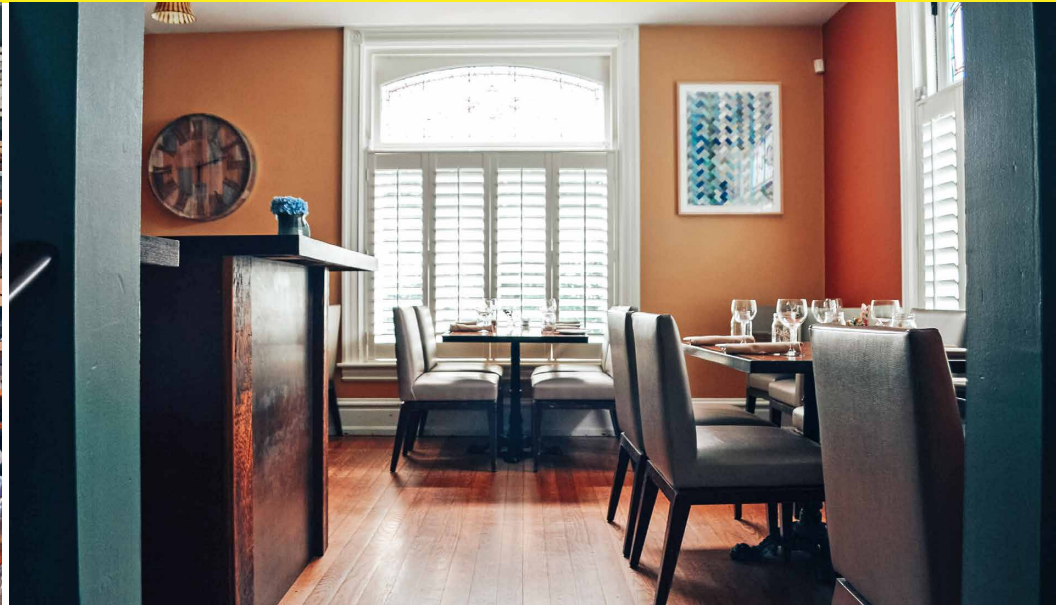
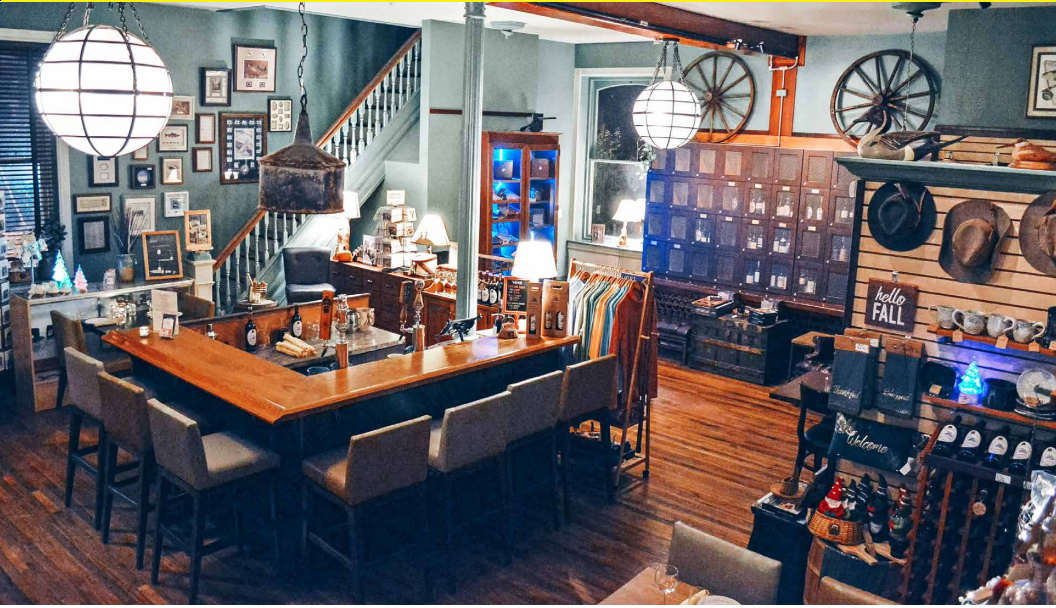
CONTACT US

STEVE DIBATTISTA
Phone: 610.359.1100
Cell: 610.368.2801
Email: sdibattista@zmcre.com

JEFFREY B. DOWD
Phone: 610.359.1100
Cell: 610.842.4383
Email: jdowd@zmcre.com

1306 Wilmington Pike, Suite A-2
West Chester, PA 19382
610.359.1100
www.zmcre.com

INTERIOR PROPERTY PHOTOS: 128 GLEN MILLS RD, GLEN MILLS, PA 19342




ZOMMICK MCMAHON
COMMERCIAL REAL ESTATE

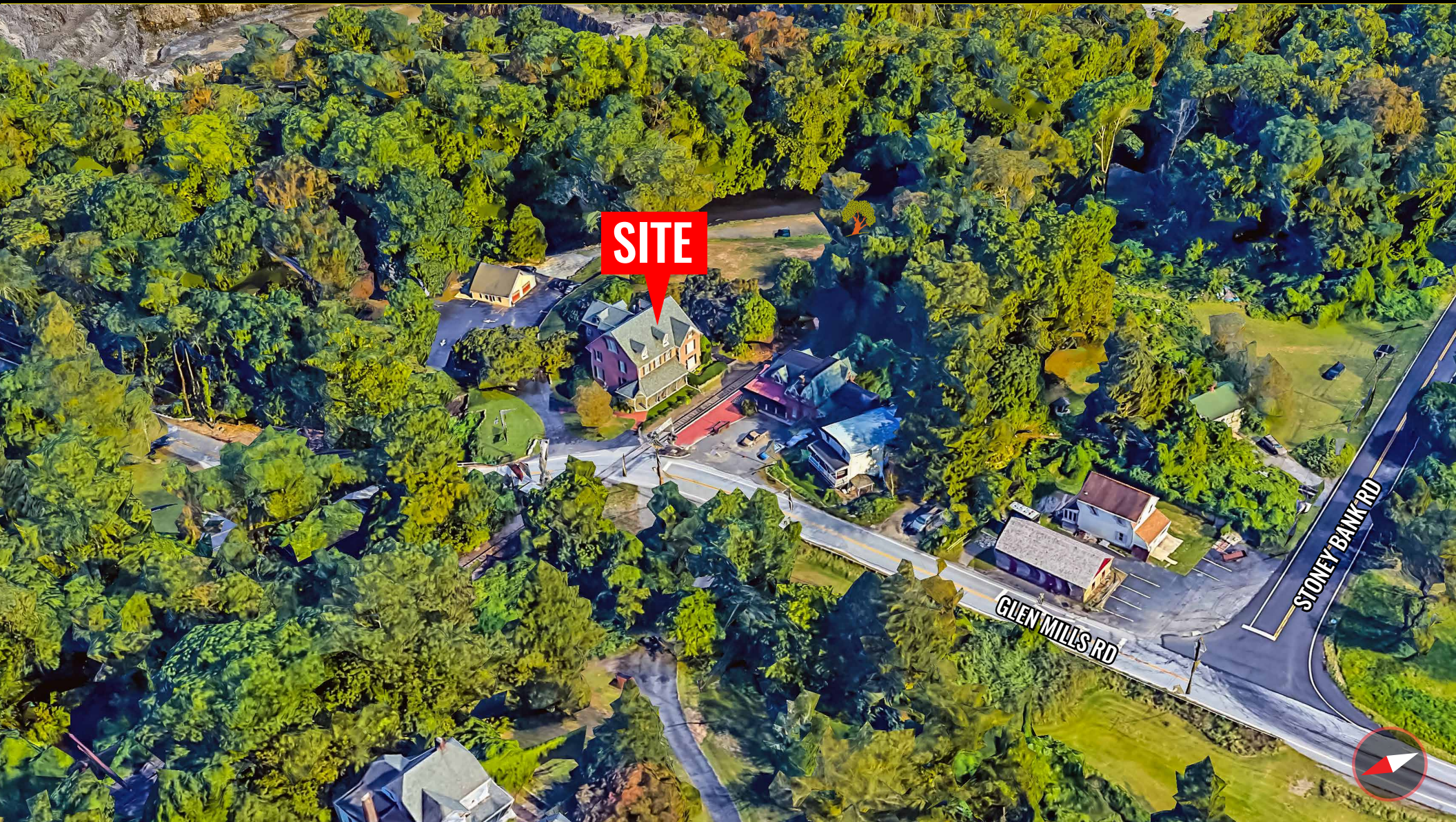
CONTACT US

STEVE DIBATTISTA
Phone: 610.359.1100
Cell: 610.368.2801
Email: sdibattista@zmcre.com

JEFFREY B. DOWD
Phone: 610.359.1100
Cell: 610.842.4383
Email: jdowd@zmcre.com

1306 Wilmington Pike, Suite A-2
West Chester, PA 19382
610.359.1100
www.zmcre.com

SITE AERIAL: 128 GLEN MILLS RD, GLEN MILLS, PA 19342




ZOMMICK MCMAHON
COMMERCIAL REAL ESTATE

CONTACT US

STEVE DIBATTISTA
Phone: 610.359.1100
Cell: 610.368.2801
Email: sdibattista@zmcre.com

JEFFREY B. DOWD
Phone: 610.359.1100
Cell: 610.842.4383
Email: jdowd@zmcre.com

1306 Wilmington Pike, Suite A-2
West Chester, PA 19382
610.359.1100
www.zmcre.com

ABOUT ZOMMICK McMAHON COMMERCIAL REAL ESTATE

Zommick McMahon Commercial Real Estate, Inc. has been a Metro Philadelphia Area staple since its inception in 1949. The Company was founded by Joseph Zommick, and continues today with Ryan McMahon and his highly experienced staff, whom are all results-oriented professionals.

SOME OF OUR SATISFIED CLIENTS:



CONTACT US

STEVE DIBATTISTA
Phone: 610.359.1100
Cell: 610.368.2801
Email: sdibattista@zmcre.com

JEFFREY B. DOWD
Phone: 610.359.1100
Cell: 610.842.4383
Email: jdowd@zmcre.com

1306 Wilmington Pike, Suite A-2
West Chester, PA 19382
610.359.1100
www.zmcre.com