

FOR SALE

8.20 AC | 34,409 SF

7740 AUGUSTA ROAD, PIEDMONT, SC 29673



## LISTING DATA

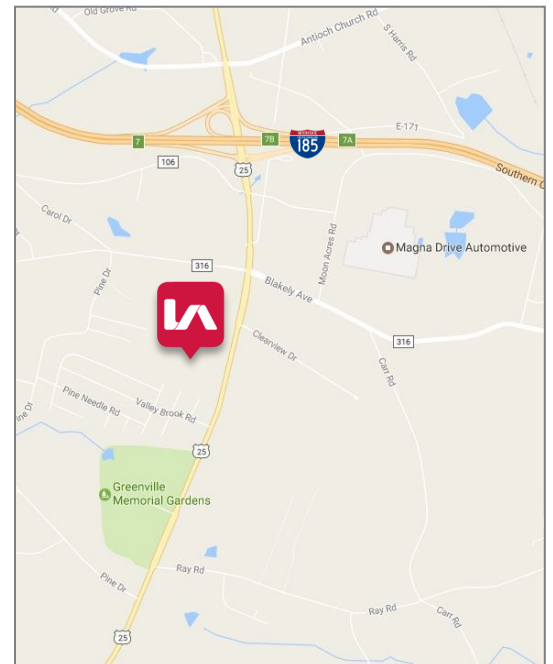
**ACERAGE:** 8.20 AC  
**BUILDING SIZE:** 34,409 SF  
**ZONING:** UNZONED

### FEATURES:

- Building 1: 12,409 SF – 8 retail suites
- Building 2: 10,000 SF – 2 retail suites
- Building 3: 12,000 SF – 88 storage units
- Augusta Place is a highly visible strip center along Hwy 25, which has been named the next growth & development area of Greenville County. Consists of three buildings on 8.2 acres.
- Pylon signage provided for tenants
- 168 parking spaces
- +/- 213' road frontage on Augusta Road
- Less than .5 mile from Buisness I-85

## ECONOMIC DATA

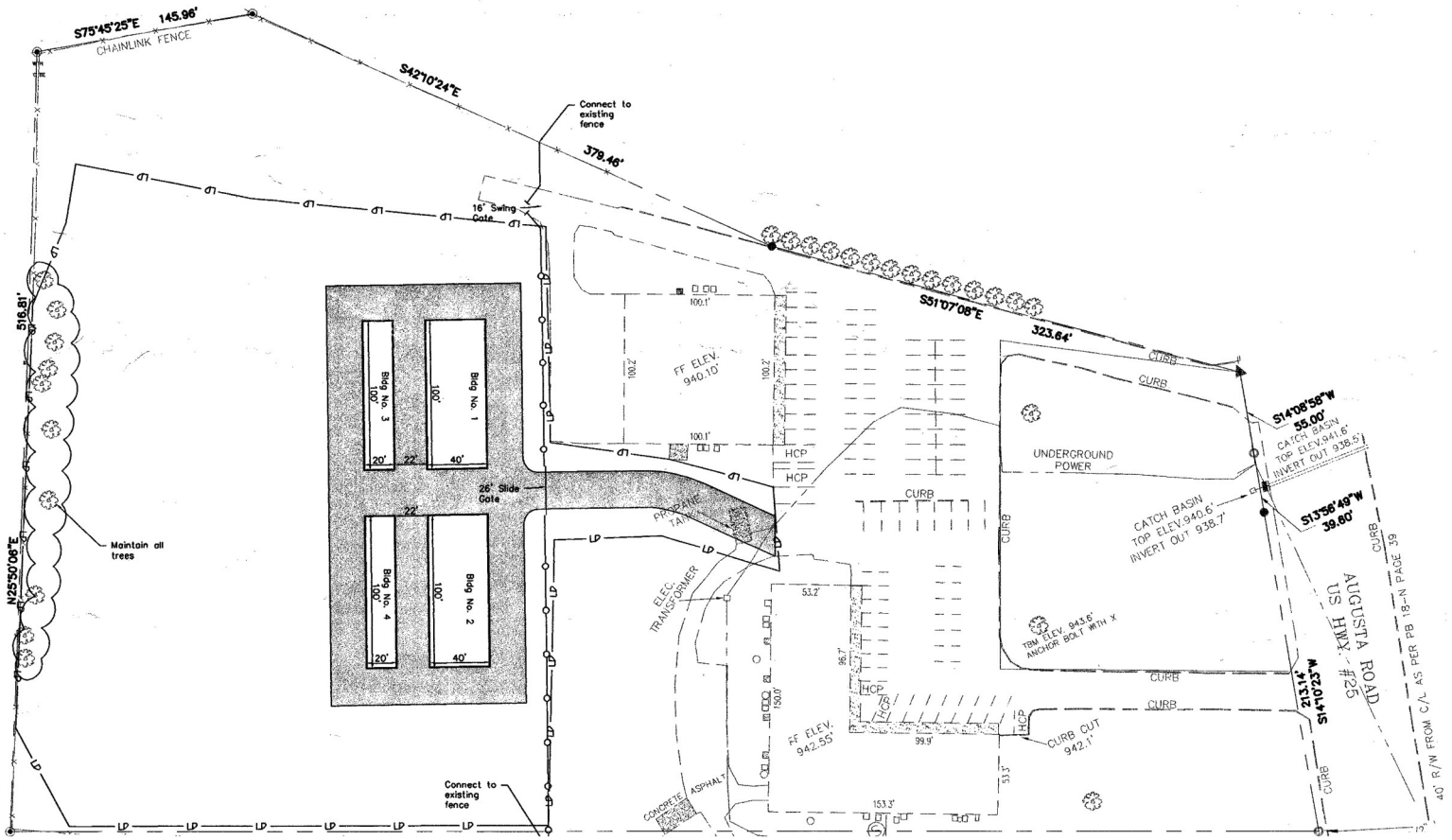
**SALE PRICE:** \$1,700,000



Ashley Trantham  
atrantham@lee-associates.com  
P 864.704.1040

All information furnished regarding property for sale, rental, or financing is from sources deemed reliable, but no warranty or representation is made to the accuracy thereof and same is submitted to errors, omissions, change of price, rental or other conditions prior to sale, lease, or financing or withdrawal without notice. No liability of any kind is to be imp used on the broker herein.

FOR SALE  
8.20 AC | 34,409 SF  
7740 AUGUSTA ROAD, PIEDMONT, SC 29673



Ashley Trantham  
atrantham@lee-associates.com  
P 864.704.1040

All information furnished regarding property for sale, rental, or financing is from sources deemed reliable, but no warranty or representation is made to the accuracy thereof and same is submitted to errors, omissions, change of price, rental or other conditions prior to sale, lease, or financing or withdrawal without notice. No liability of any kind is to be imposed on the broker herein.