



US Bancorp Tower

111 SW Fifth Ave.
Portland, OR

The Tenant's Advantage



SUBLEASE

Premises

18,685 sf on the 3rd Floor of the Tower

Rental Rate

\$25.50 FSG

Availability

May 01, 2014

Term

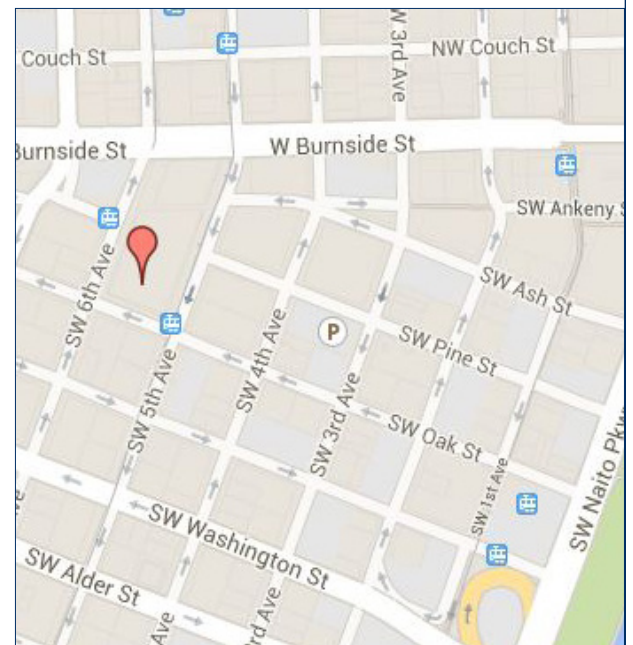
Through March 01, 2021

Parking

17 spaces in the Tower Garage @ Market Rate

Features

- Open layout, plus conference rooms
- Creative office/urban tech feel with partial exposed ceiling
- Great connection to new lobby and street level amenities
- Food cart pod located blocks away on 5th Ave.
- Within walking distance of Tri-Met Transit Mall and Max Line.
- Building features fitness facility, banking, car rental service, concierge desk, and is home to The Portland City Grill.
- LEED-EB Silver and Energy Star Certified Building



For more information:

Craig Reinhart
503.684.3692
creinhart@cresa.com

Annalore Rodman
503.546.3671
arodman@cresa.com

Cresa Portland

415 NW 11th Ave. ■ Portland, OR 97209
tel 503.598.3900 ■ www.cresa.com

Even though obtained from sources deemed reliable, no warranty or representation, express or implied, is made as to the accuracy of the information herein, and it is subject to errors, omissions, change of price, rental or other conditions, withdrawal without notice, and to any special listing conditions imposed by our principals.



US Bancorp Tower

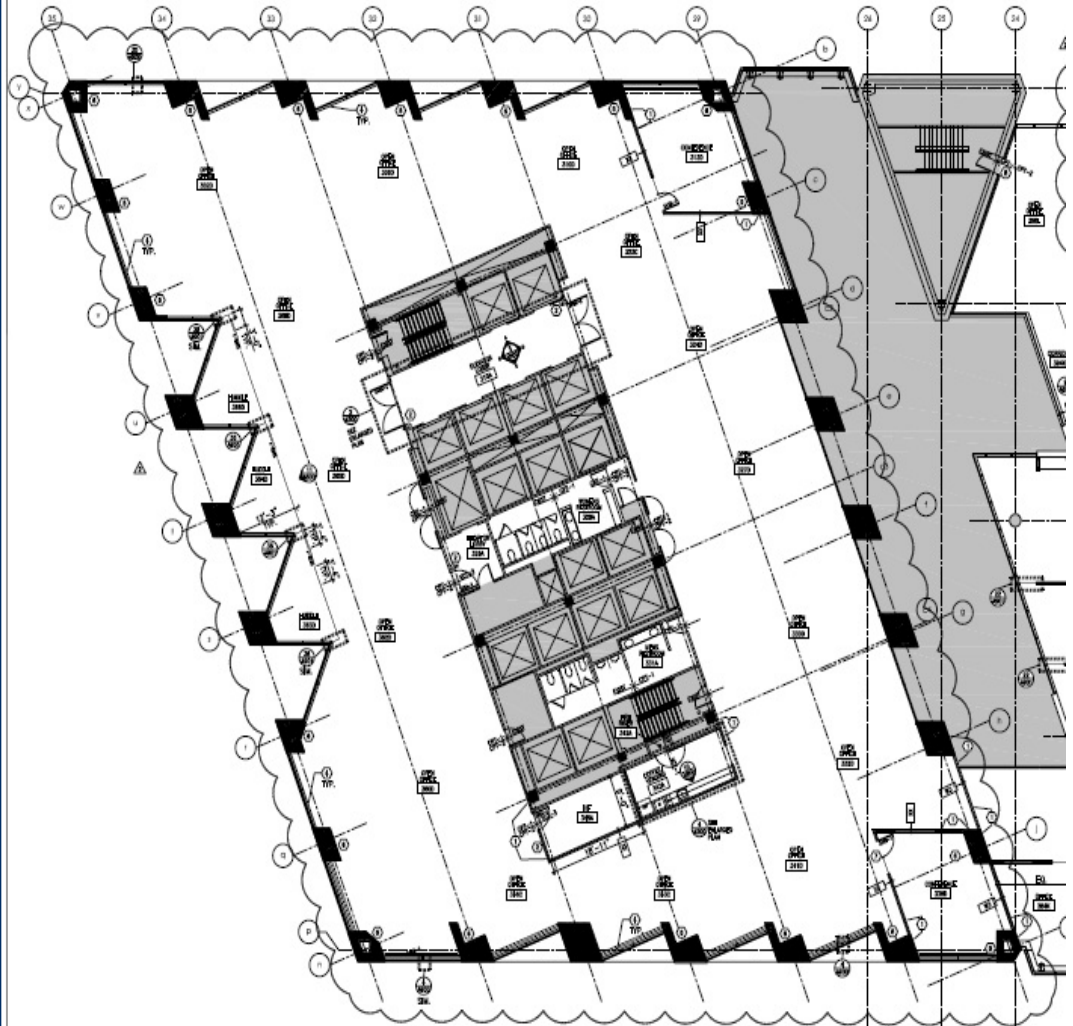
111 SW Fifth Ave.
Portland, OR

The Tenant's Advantage

SUBLEASE

Third Floor Tower

18,685 RSF



For more information:

Craig Reinhart
503.684.3692
creinhart@cresa.com

Annalore Rodman
503.546.3671
arodman@cresa.com

Cresa Portland

415 NW 11th Ave. ■ Portland, OR 97209
tel 503.598.3900 ■ www.cresa.com



US Bancorp Tower

111 SW Fifth Ave.
Portland, OR

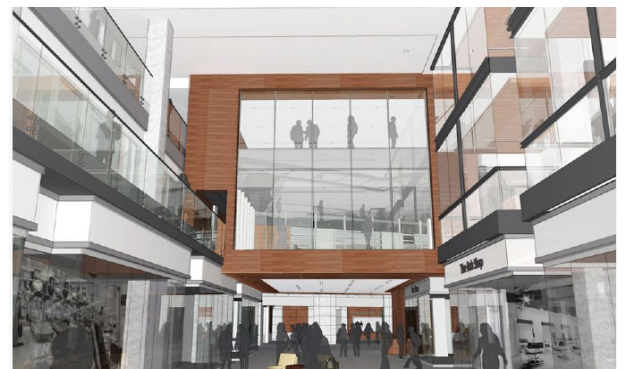
The Tenant's Advantage



SUBLEASE



All new Atrium and
Lobby Finishes



For more information:

Craig Reinhart
503.684.3692
creinhart@cresa.com

Annalore Rodman
503.546.3671
arodman@cresa.com

Cresa Portland

415 NW 11th Ave. ■ Portland, OR 97209
tel 503.598.3900 ■ www.cresa.com