

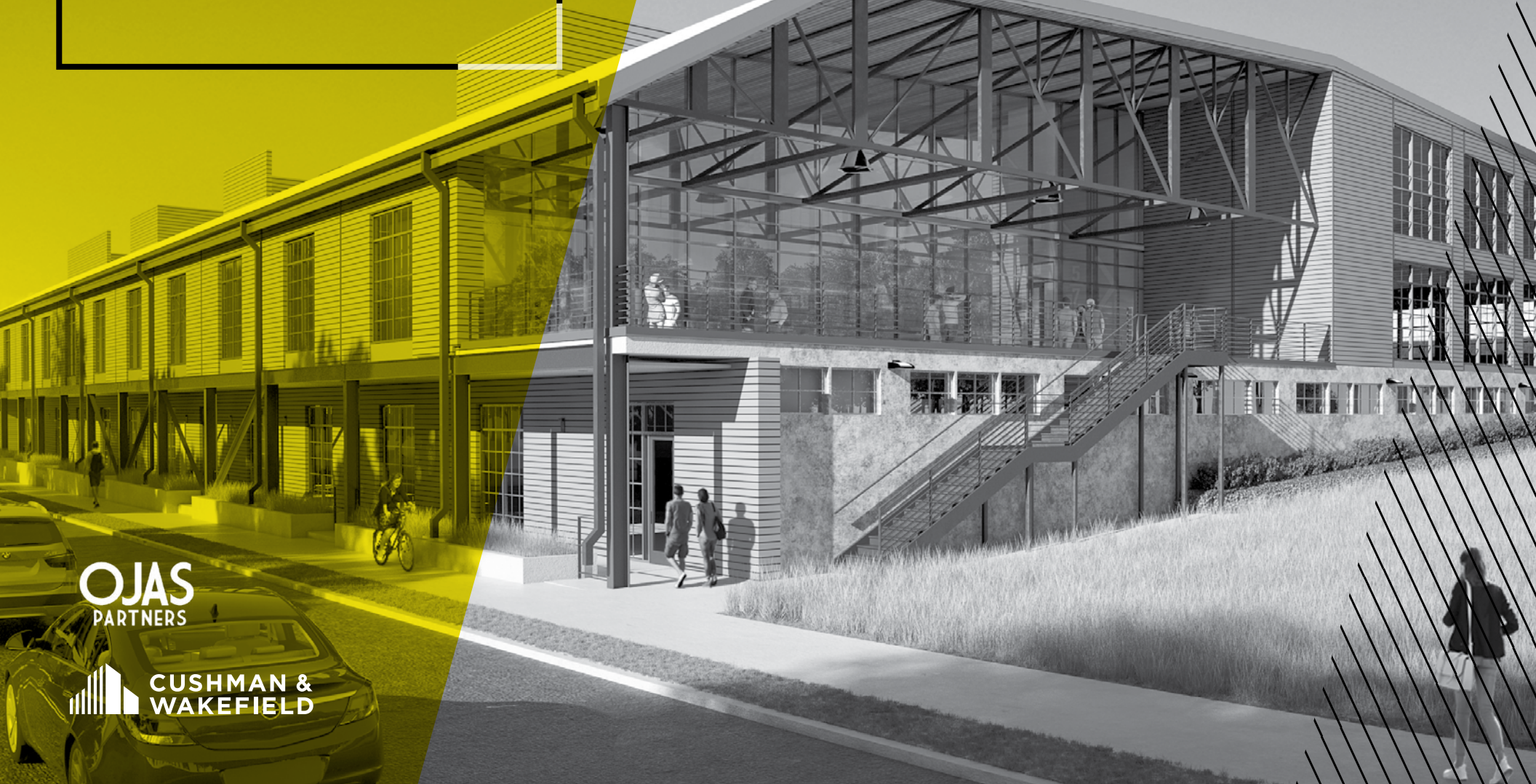
± 2,500-71,975 SF | DELIVERING JULY 2020



# SILO STUDIOS

THE NATIONS

## HISTORIC MILL BUILDING OFFERING CREATIVE OFFICE & RESTAURANT SPACE



**OJAS**  
PARTNERS

**CUSHMAN &  
WAKEFIELD**

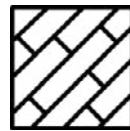
THE NATIONS

# SILO STUDIOS

SILO STUDIOS, once an industrial hardwood lumber mill, is being transformed into Nashville's premier creative office and retail space in The Nations.

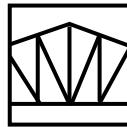
The former lumber mill's signature building will be reactivated as the Silo Studios anchor. It will feature the dramatic bow trusses spanning the full width of the building, a light well, a grand staircase to the upper level, and a continuous pedestrian terrace that runs along Centennial Ave.

The master plan focuses on preserving as much of the original building's features, character and memory while reactivating the space for its best possible use today.



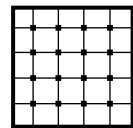
## Historic Mill Building

Offering Creative Office and Retail Spaces



## Exposed Bow Truss Ceiling

Expanding Over 15 Feet Tall with Reclaimed Wooden Roof Interiors



## 1st Floor Space

to Include Column Grid and Ceiling Heights of 12'+



## Unique Restaurant & Bar Space

with Outdoor Patio

# SILO STUDIOS

THE NATIONS

## SUPER PORCH

The dramatic, signature gathering space known as the “Super Porch” will feature 25-foot ceilings and 2 bow trusses.



# MAIN COURTYARD & ENTRY

The main courtyard and recreation lawn feature an elevated platform with various points of entry and linear outdoor seating influenced by preserved train rails. This courtyard will be highly activated with a performance stage, dining terrace and easy access to retail.



LIVE  
WORK  
PLAY  
**AT SILO  
BEND**

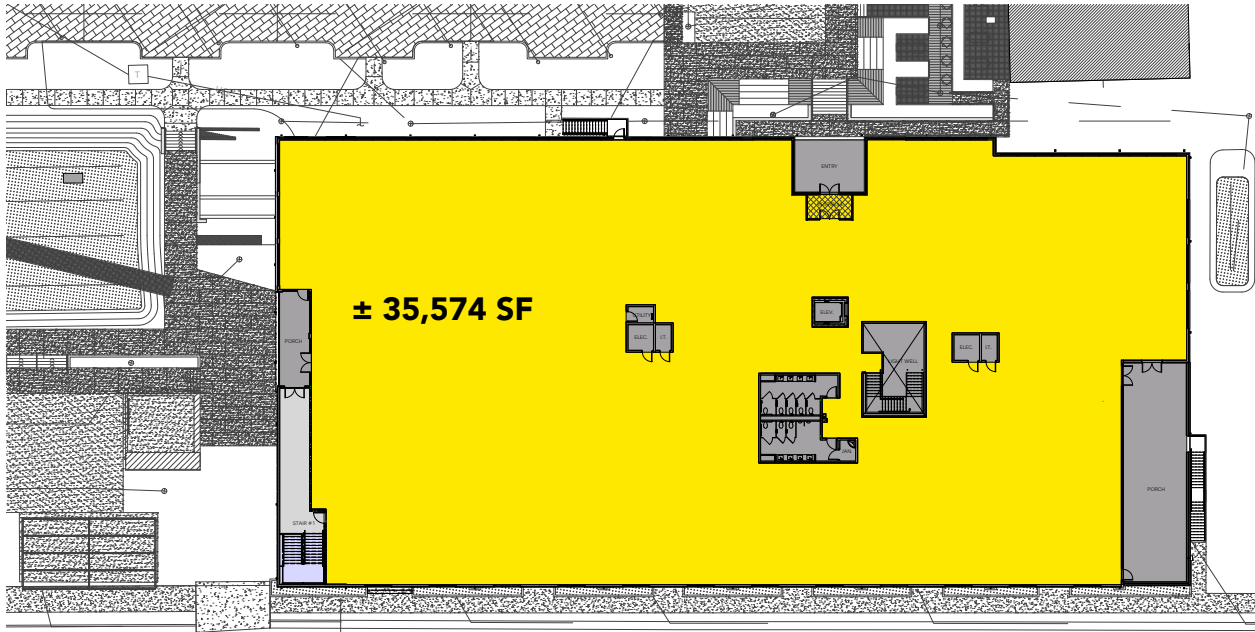
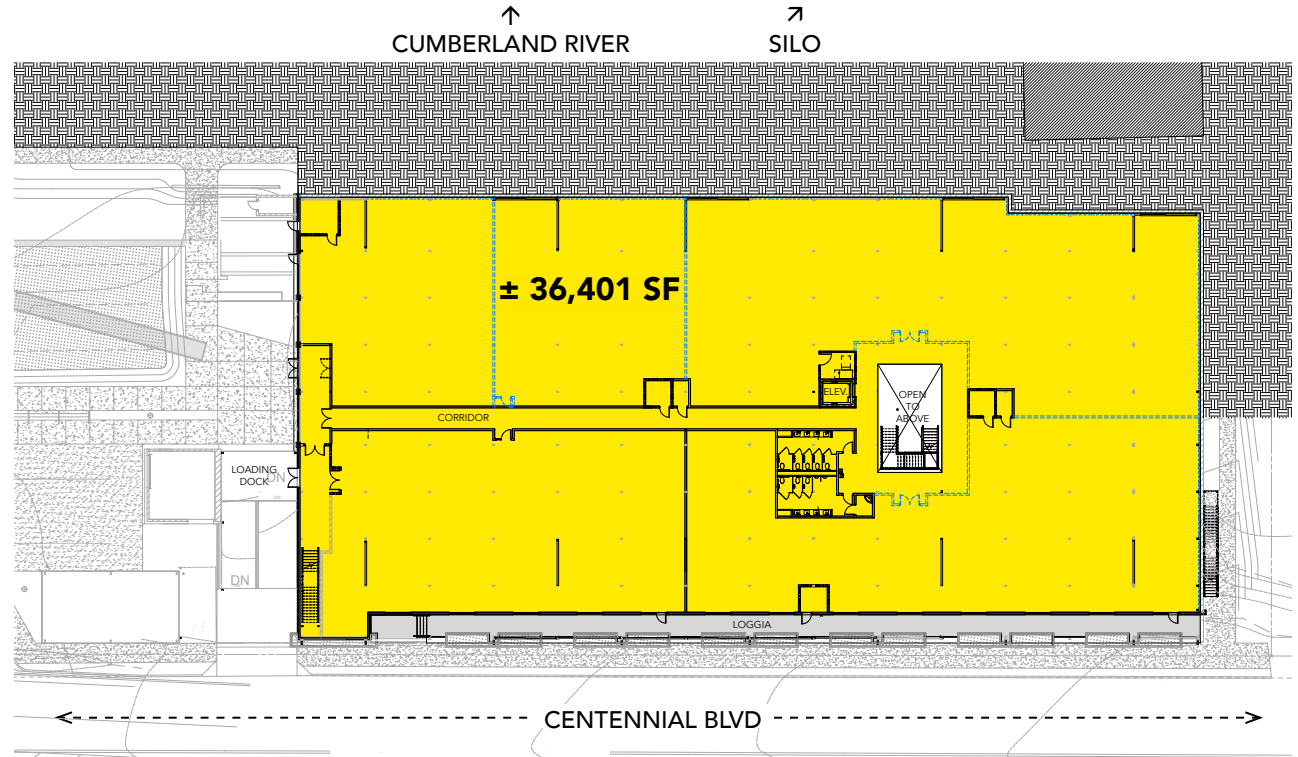


Silo Studios is located at the intersection of Centennial Boulevard and 54th Avenue. This prime location situates Silo Studios at the gateway to the master-planned, mixed-used Silo Bend development. Silo Bend will have 394 residential units, retail and more surrounding the master campus. Walking trails and greenways will provide access and connectivity throughout the development.

# LOWER LEVEL FLOOR PLAN

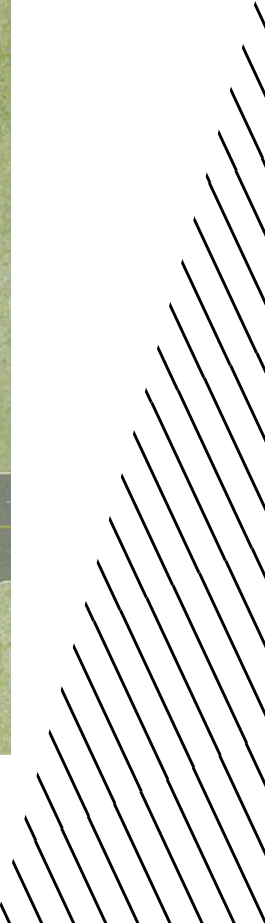
RESTAURANT AND BAR  
BAYS AVAILABLE ON  
CENTENNIAL BLVD.

*\*NOTE: Column Spacing Varies,  
approx 20' x 14'8"*



# UPPER LEVEL FLOOR PLAN

# SITE PLAN





# LOCATION IN THE NATIONS

Silo Bend is ideally situated in the heart of The Nations and along the booming Centennial Boulevard/51st Avenue corridor.

- The Nations – Nashville’s fastest growing neighborhood
- 5 Miles & a 15 Minute Drive to Downtown Nashville
- Easy Access to I-40, I-440 Junction, Downtown, West & North Nashville
- Adjacent to Charlotte Avenue Corridor and Sylvan Park

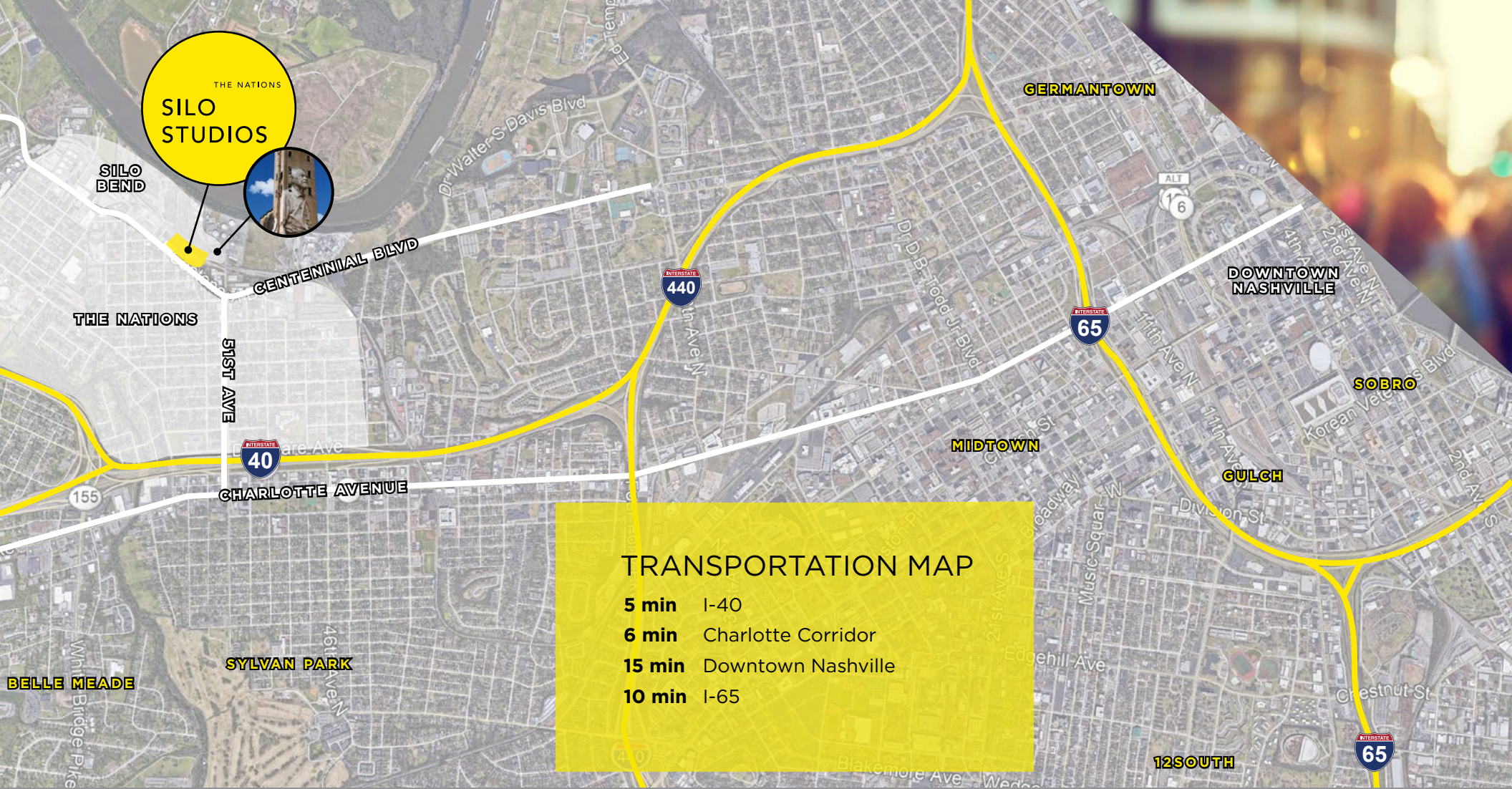
- |    |  |
|----|--|
| 1  | UGLY MUG COFFEE CAFE                     |
| 2  | WHITE BISON COFFEE + RETAIL SPACE        |
| 3  | OSCAR'S TACO SHOP                        |
| 4  | DOLLAR GENERAL                           |
| 5  | LAVERTE'S MARKET                         |
| 6  | FROTHY MONKEY                            |
| 8  | ABLE                                     |
| 9  | NICKY'S COAL FIRED                       |
| 10 | SOUTHERN GRIST BREWING + TAPROOM         |
| 11 | PROJECT 615                              |
| 12 | FUTURE STOCKING 51 EXPANSION             |
| 13 | DEVELOPMENT OPPORTUNITY - 1300 51ST AV N |
| 14 | CORNER PUB                               |
| 15 | THE FOUNTAIN OF JUICE                    |
| 16 | THE MILL BOUTIQUE                        |
| 17 | FAT BOTTOM BREWING CO.                   |
| 18 | THE NATIONS BAR & GRILL                  |
| 19 | 51 N TAPROOM                             |
| 20 | BRIGHTSIDE BAKESHOP                      |
| 21 | TURTLE ANARCHY BREWING                   |
| 22 | WEST MILL TOWNHOMES                      |
| 23 | REDEVELOPMENT - FUTURE RESTAURANT        |
| 24 | HUGH BABY'S                              |
| 25 | HATHORNE                                 |
| 26 | ML ROSE                                  |
| 27 | BARISTA PARLOR                           |
| 28 | BEARDED IRIS                             |
| 29 | FARM BURGER                              |
| 30 | DOUBLE DOGS                              |
| 31 | CHAATABLE                                |
| 32 | BIG BAD BREAKFAST                        |



## THE SILO

Built in the late 1800s, the 200-foot grain silo is the only remaining original structure of the Gilette Grain Company's headquarters.

It has long been a recognizable landmark dominating the landscape of the Nations and the surrounding area. In May 2017, the partners behind the Silo Studios and Silo Bend developments collaborated to commission the painting of the mural done by acclaimed international artist, Guido van Helten.



THE NATIONS  
**SILLO STUDIOS**



### TRANSPORTATION MAP

- 5 min** I-40
- 6 min** Charlotte Corridor
- 15 min** Downtown Nashville
- 10 min** I-65



OFFICE LEASING  
**Stewart Lyman**  
 +1 615 301 2843  
 stewart.lyman@cushwake.com

**Whit McCrary IV, CCIM**  
 +1 615 301 2908  
 whit.mccrary@cushwake.com



RETAIL LEASING  
**Elam Freeman**  
 +1 615 219 5174  
 elam@ojaspartners.com

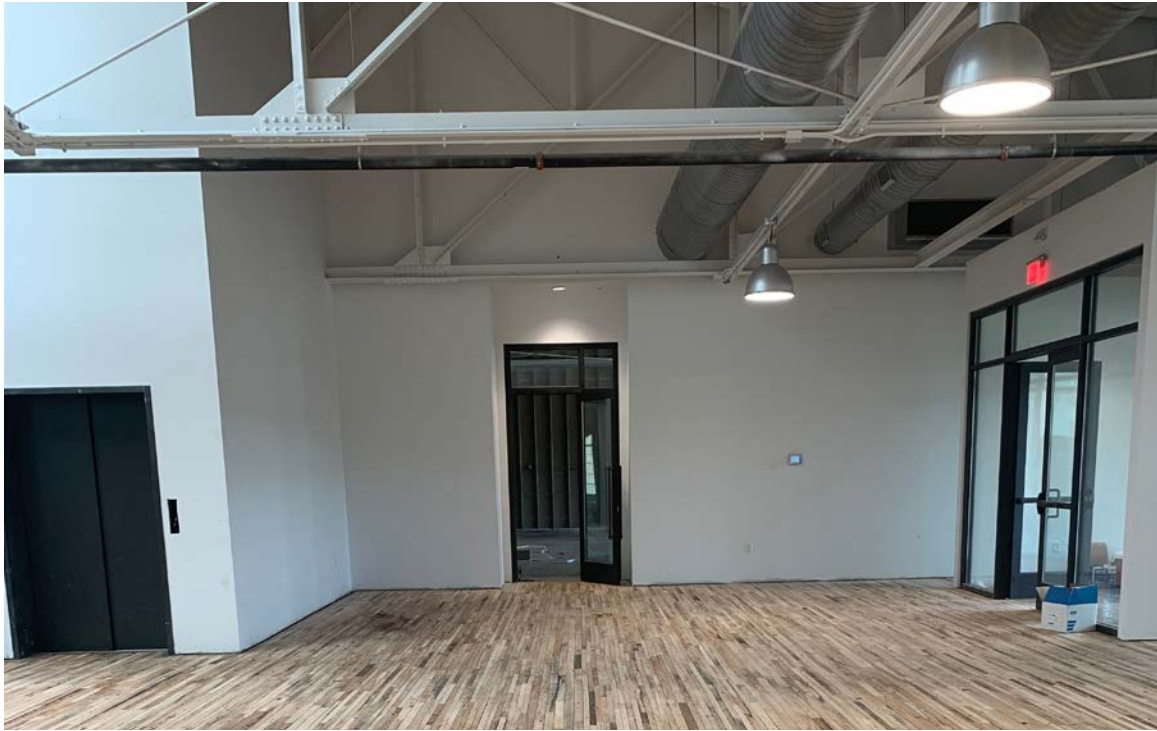
**Elliot Kyle**  
 +1 615 491 7416  
 ekyle@mcdevitt.com

1033 Demonbreun, Suite 600 / Nashville, Tennessee 37203 / +1 615 301 2800  
[cushmanwakefield.com](http://cushmanwakefield.com)

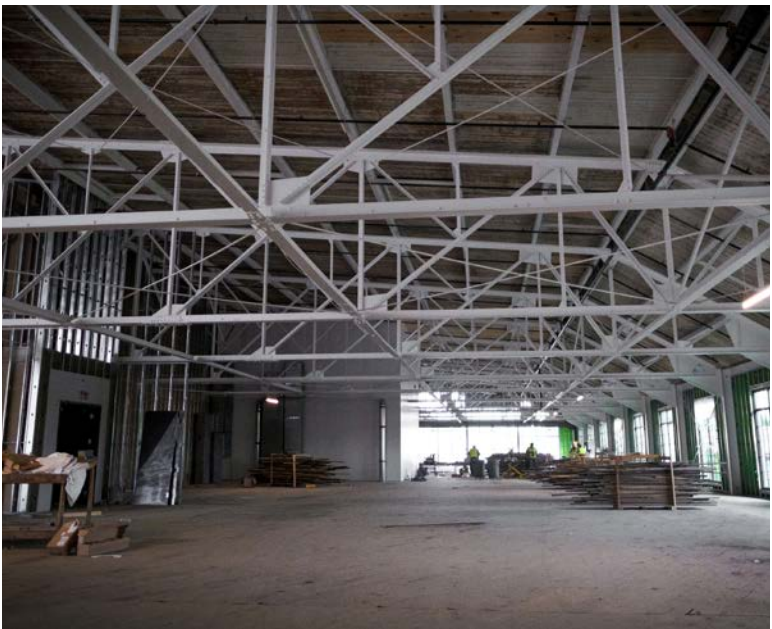
©2019 Cushman & Wakefield. All rights reserved. The information contained in this communication is strictly confidential. This information has been obtained from sources believed to be reliable but has not been verified. No warranty or representation, express or implied, is made as to the condition of the property (or properties) referenced herein or as to the accuracy or completeness of the information contained herein, and same is submitted subject to errors, omissions, change of price, rental or other conditions, withdrawal without notice, and to any special listing conditions imposed by the property owner(s). Any projections, opinions or estimates are subject to uncertainty and do not signify current or future property performance.



# CONSTRUCTION UPDATES



# CONSTRUCTION UPDATES



# CONSTRUCTION UPDATES

