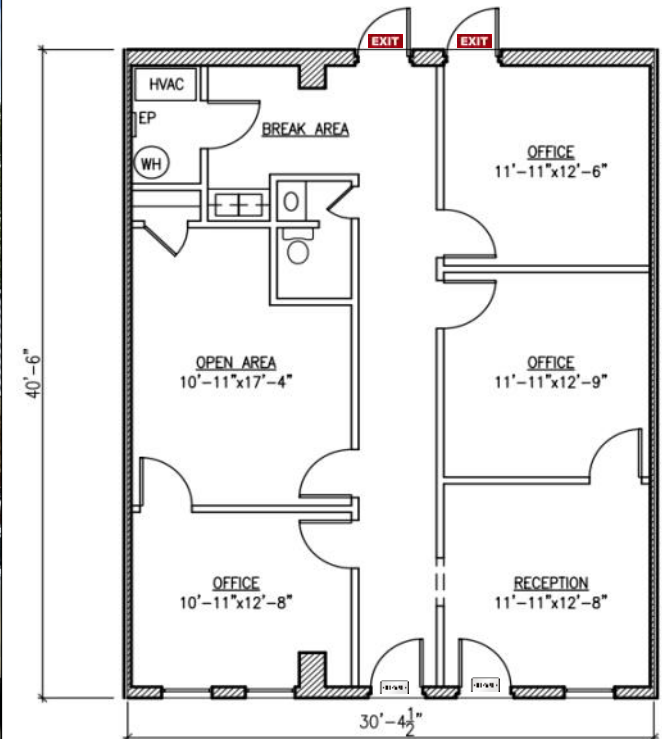


# OFFICE SUITE FOR LEASE

JUST OFF HIGHWAY 31 / PELHAM / SHELBY COUNTY / NEAR I-65



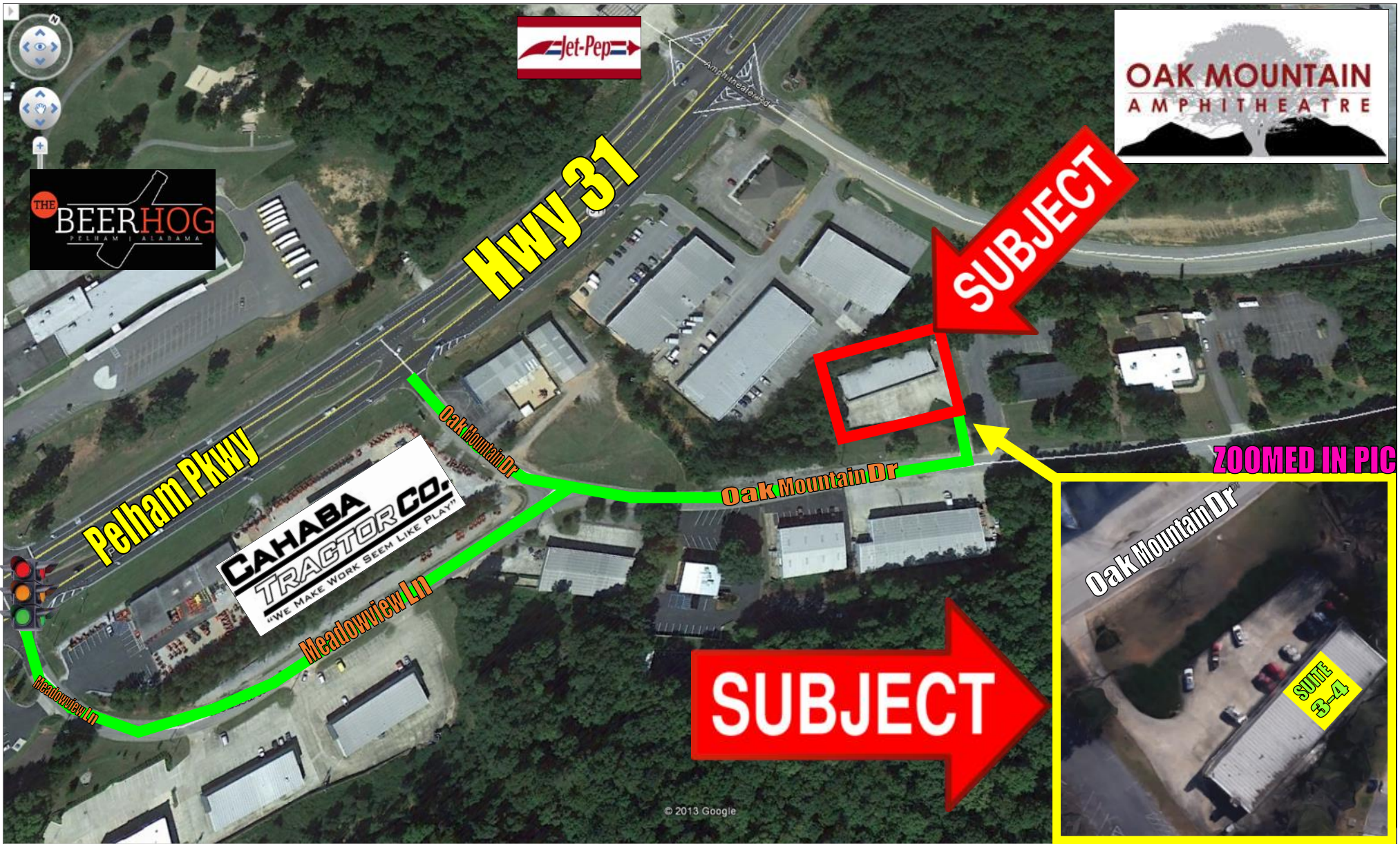
## 2050 Oak Mountain Dr - Suite 3-4 - Pelham, AL 35124

- **Suite 3-4** is approx. 1,163± SF and lease for \$975 per month + utilities
- Contains four offices, reception area, break room, and bathroom with shower (*layout is not exact*)
- Located right off Highway 31. Minutes from Highway 119, I-65, I-459, Valleydale Road, Hoover and Alabaster. Very close to numerous places to eat and meet

[Ponder Properties CRE is NOW](#)

# OFFICE SUITE FOR LEASE

JUST OFF HIGHWAY 31 / PELHAM / SHELBY COUNTY / NEAR I-65



Ponder Properties CRE is NOW