

LINCOLN SQUARE BROAD STREET & WASHINGTON AVENUE PHILADELPHIA, PA

±1,895 SF AVAILABLE FOR LEASE

DEVELOPED BY



property highlights.

- Summer 2018 Delivery
- Restaurant space available
- New mixed-use development at the intersection of Broad Street and Washington Avenue, the areas most dominant intersection with over 45,000 VPD
- Project will include 356 apartments and ±105,000 square feet of retail
- Join Target, PetSmart and Sprouts
- ±280 dedicated retail parking spaces

stats.

2016 DEMOGRAPHICS*	.5 MILES	1 MILE	1.5 MILES
EST. POPULATION	23,261	110,059	198,507
EST. HOUSEHOLDS	11,070	54,137	94,798
EST. AVG. HH INCOME	\$58,423	\$68,405	\$66,311

BROAD STREET TRAFFIC COUNT: 22,235 VPD *ESRI 2016
WASHINGTON AVENUE TRAFFIC COUNT: 18,724 VPD



METRO[®]
COMMERCIAL
REAL ESTATE, INC.

MetroCommercial.com | PHILADELPHIA, PA | PLYMOUTH MEETING, PA | MOUNT LAUREL, NJ | NAPLES, FL

get in touch.

SCOTT BENSON

office 215.893.0300
direct 215.282.0158
sbenson@metrocommercial.com

STEVE NIGGEMAN

office 610.825.5222
direct 610.260.2667
sniggeman@metrocommercial.com

VIEW FACING SOUTHWEST
BROAD STREET & CARPENTER STREET



©BLT ARCHITECTS 2016

VIEW FACING NORTHEAST
15TH STREET & WASHINGTON AVENUE



The information and images contained herein are from sources deemed reliable. However, Metro Commercial Real Estate, Inc. makes no representation whatsoever as to their accuracy or authenticity. Images shown may be modified for illustrative purposes. Images may be out-of-date and not current. 4.17.18

LINCOLN SQUARE
PHILADELPHIA, PA



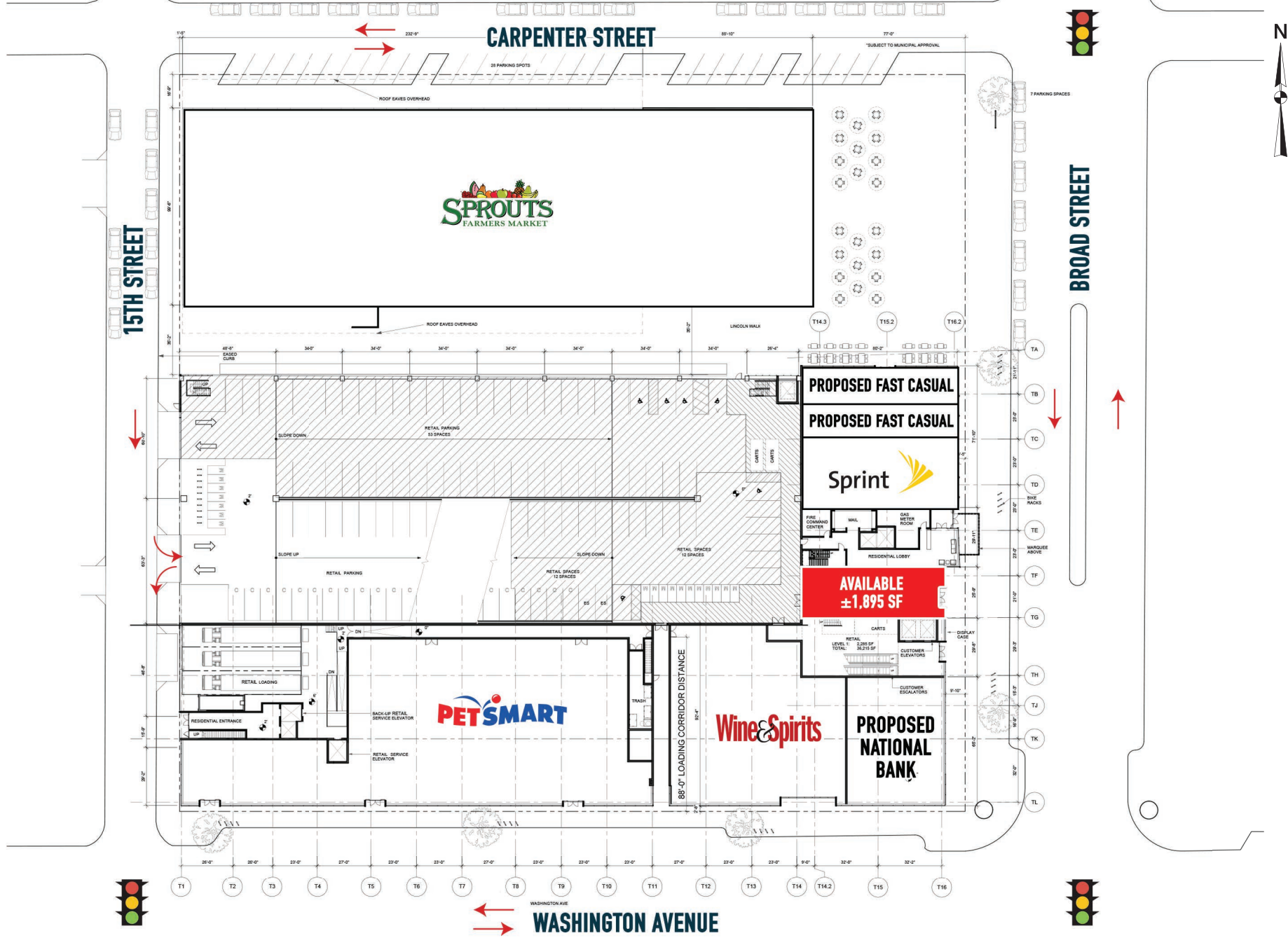
VIEW FACING EAST



The information and images contained herein are from sources deemed reliable. However, Metro Commercial Real Estate, Inc. makes no representation whatsoever as to their accuracy or authenticity. Images shown may be modified for illustrative purposes. Images may be out-of-date and not current. 4.17.18

LINCOLN SQUARE - LINCOLN WALK PHILADELPHIA, PA



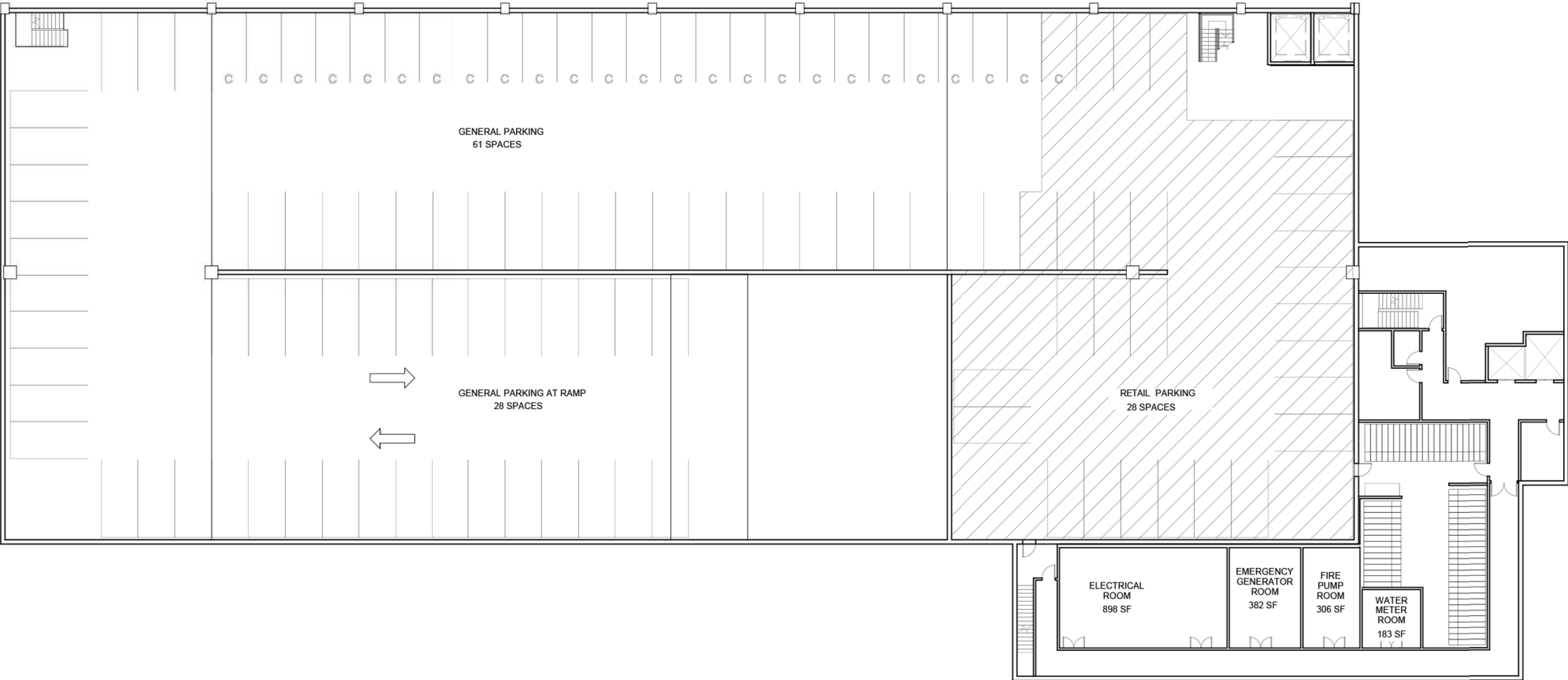


The information and images contained herein are from sources deemed reliable. However, Metro Commercial Real Estate, Inc. makes no representation whatsoever as to their accuracy or authenticity. Images shown may be modified for illustrative purposes. Images may be out-of-date and not current. 4.17.18

LINCOLN SQUARE - GROUND LEVEL RETAIL & PARKING PHILADELPHIA, PA

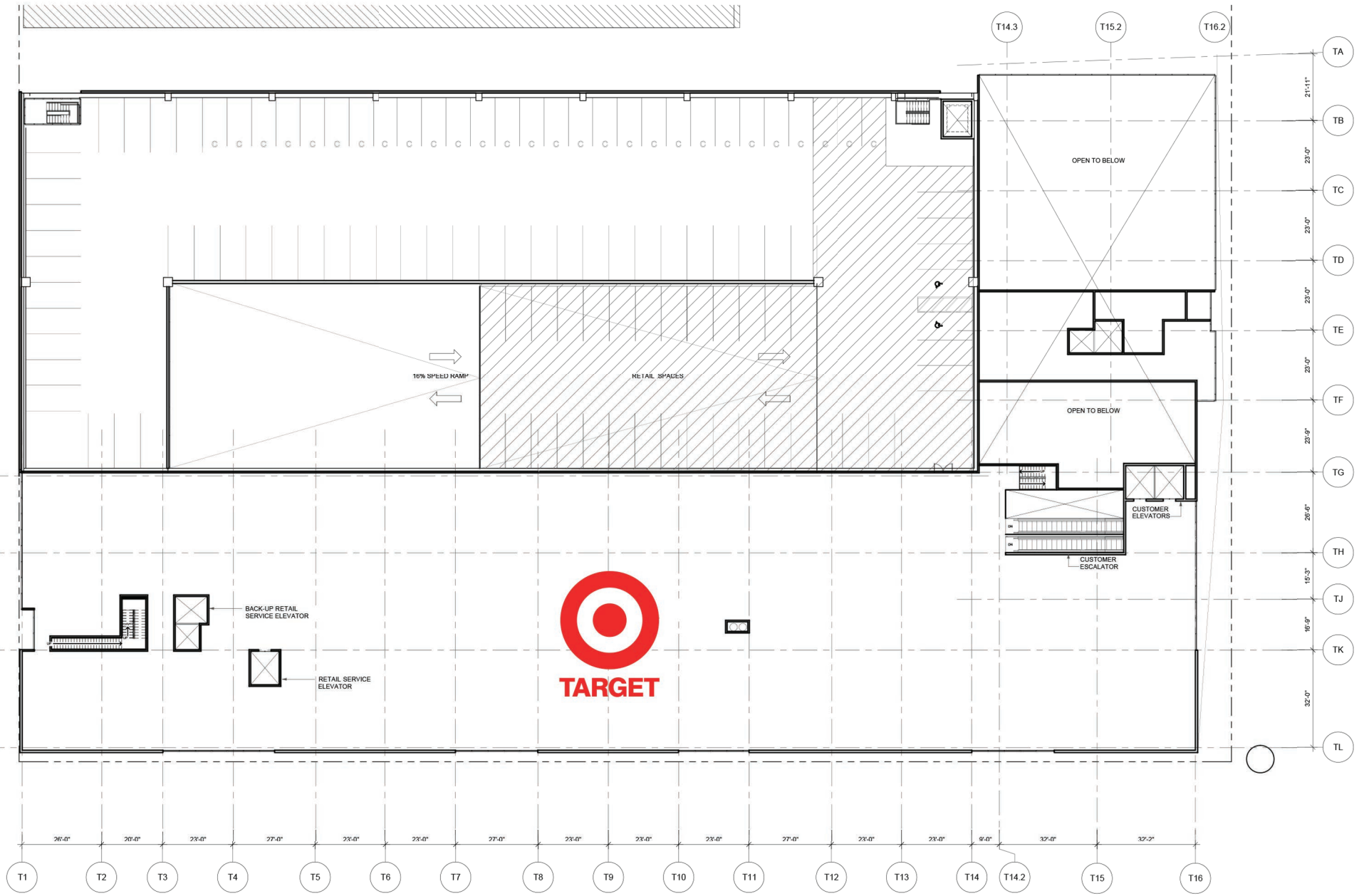


LOWER LEVEL PARKING



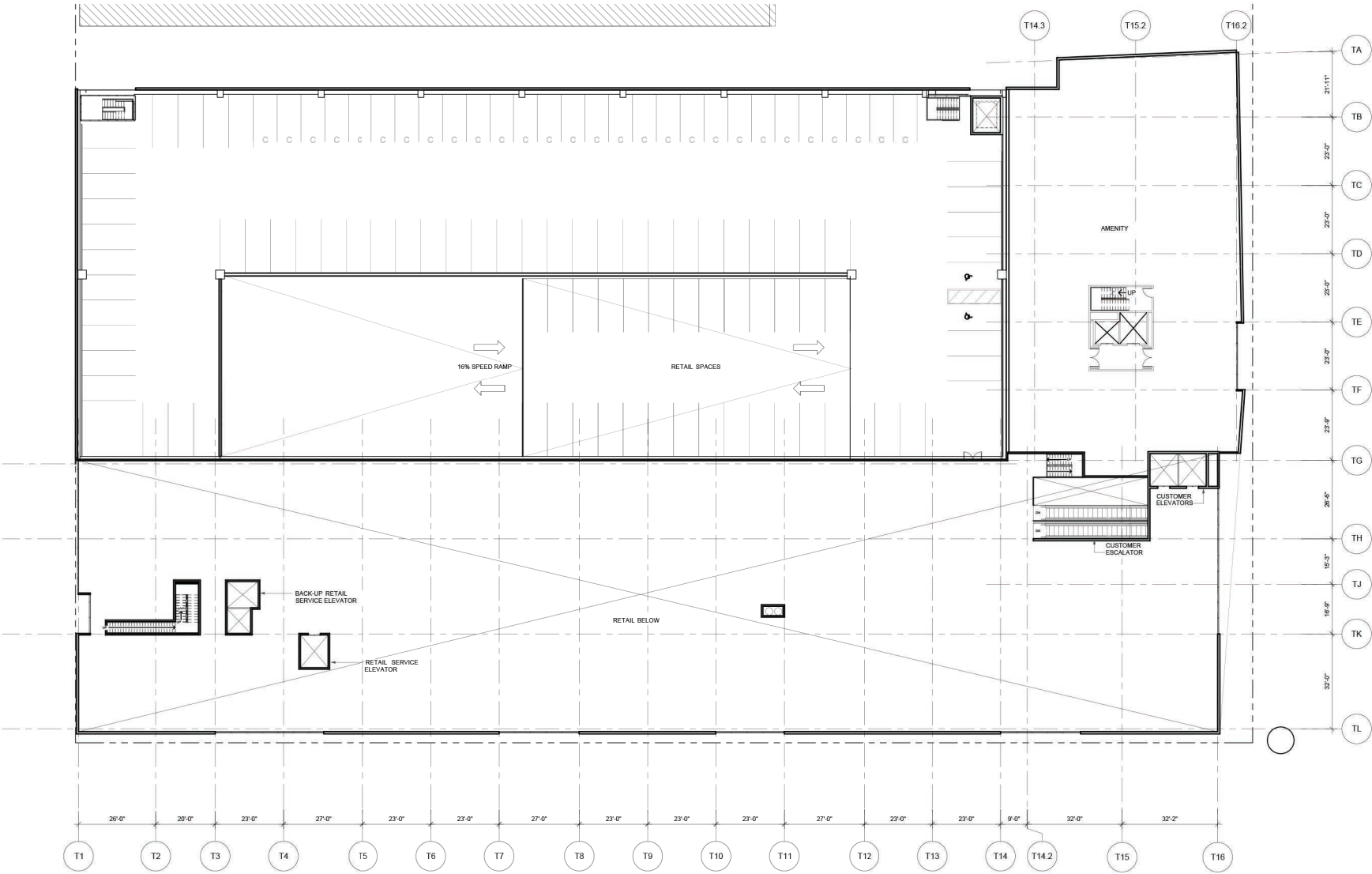
The information and images contained herein are from sources deemed reliable. However, Metro Commercial Real Estate, Inc. makes no representation whatsoever as to their accuracy or authenticity. Images shown may be modified for illustrative purposes. Images may be out-of-date and not current. 4.17.18

LEVEL TWO RETAIL AND PARKING



The information and images contained herein are from sources deemed reliable. However, Metro Commercial Real Estate, Inc. makes no representation whatsoever as to their accuracy or authenticity. Images shown may be modified for illustrative purposes. Images may be out-of-date and not current. 4.17.18

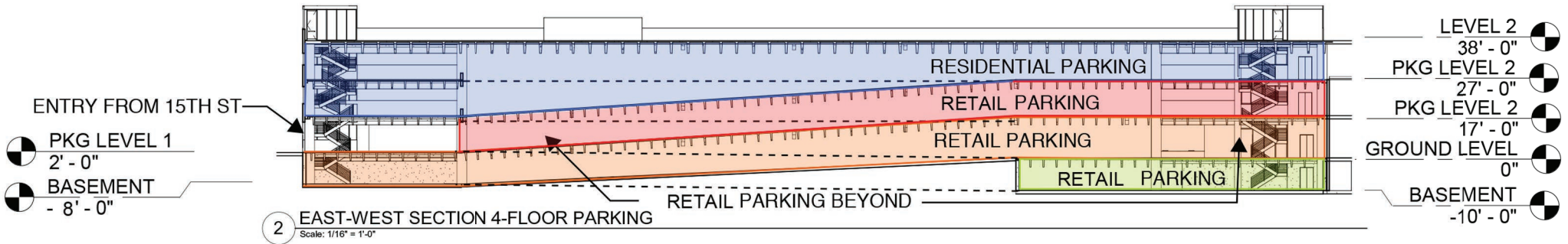
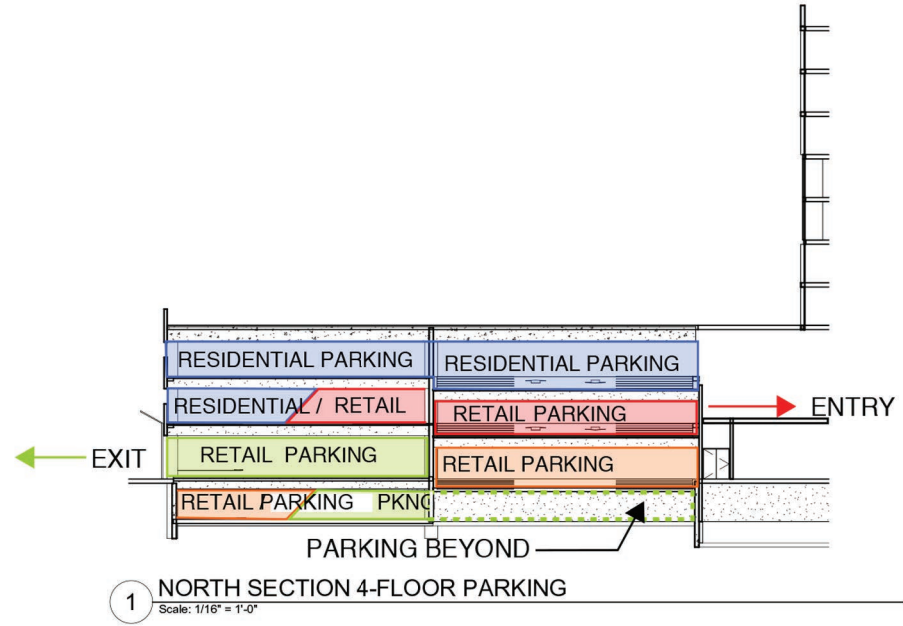
LEVEL THREE PARKING



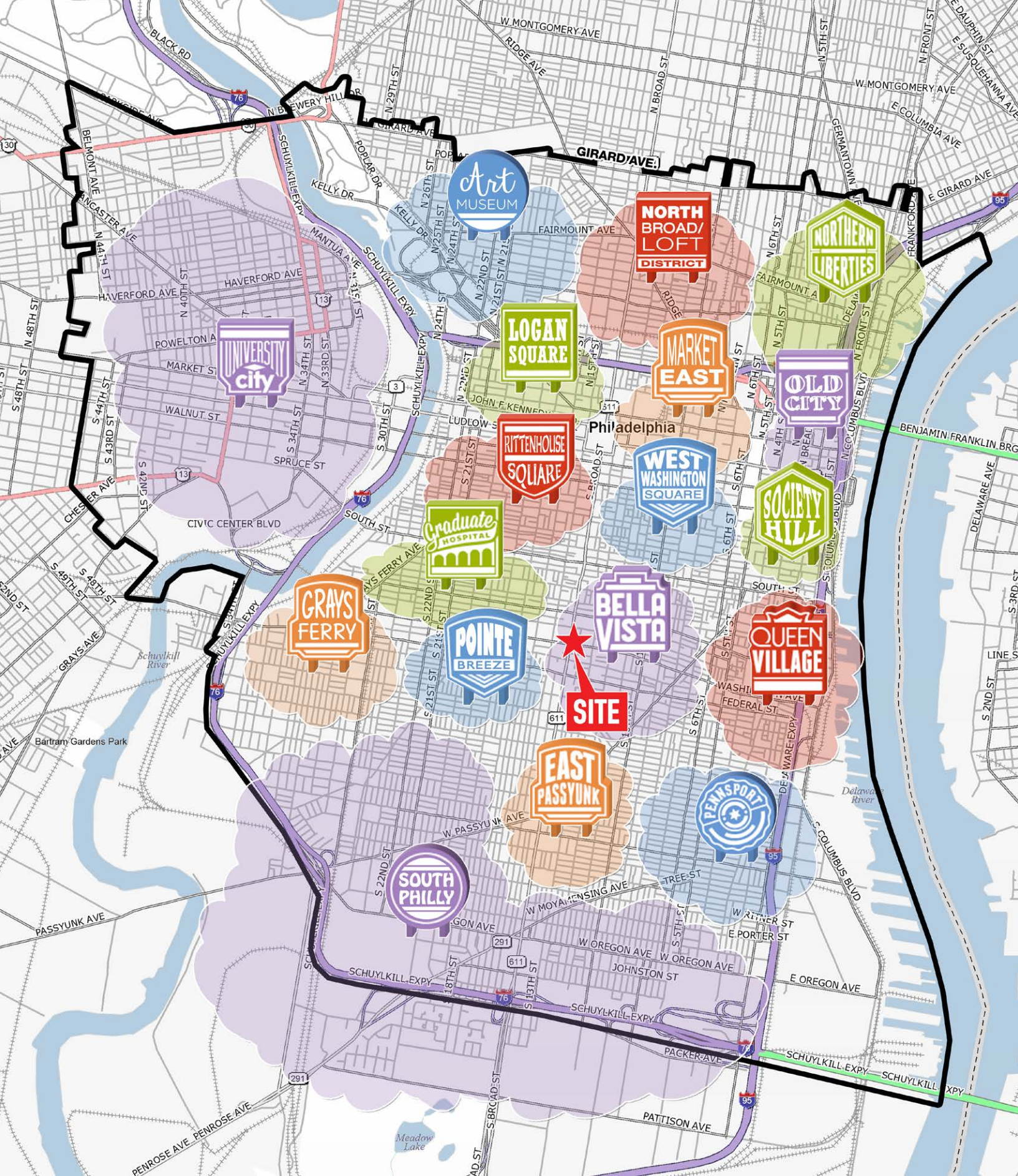
The information and images contained herein are from sources deemed reliable. However, Metro Commercial Real Estate, Inc. makes no representation whatsoever as to their accuracy or authenticity. Images shown may be modified for illustrative purposes. Images may be out-of-date and not current. 4.17.18

PARKING DECK CROSS SECTION

- 81 RETAIL SPACES -
- 115 RETAIL SPACES - BELOW GRADE
- 90 RETAIL SPACES -
- 286 TOTAL RETAIL SPACES
- 170 RESIDENTIAL SPACES



The information and images contained herein are from sources deemed reliable. However, Metro Commercial Real Estate, Inc. makes no representation whatsoever as to their accuracy or authenticity. Images shown may be modified for illustrative purposes. Images may be out-of-date and not current. 4.17.18



The information and images contained herein are from sources deemed reliable. However, Metro Commercial Real Estate, Inc. makes no representation whatsoever as to their accuracy or authenticity. Images shown may be modified for illustrative purposes. Images may be out-of-date and not current. 4.17.18

LINCOLN SQUARE PHILADELPHIA, PA





The information and images contained herein are from sources deemed reliable. However, Metro Commercial Real Estate, Inc. makes no representation whatsoever as to their accuracy or authenticity. Images shown may be modified for illustrative purposes. Images may be out-of-date and not current. 4.17.18

LINCOLN SQUARE PHILADELPHIA, PA

