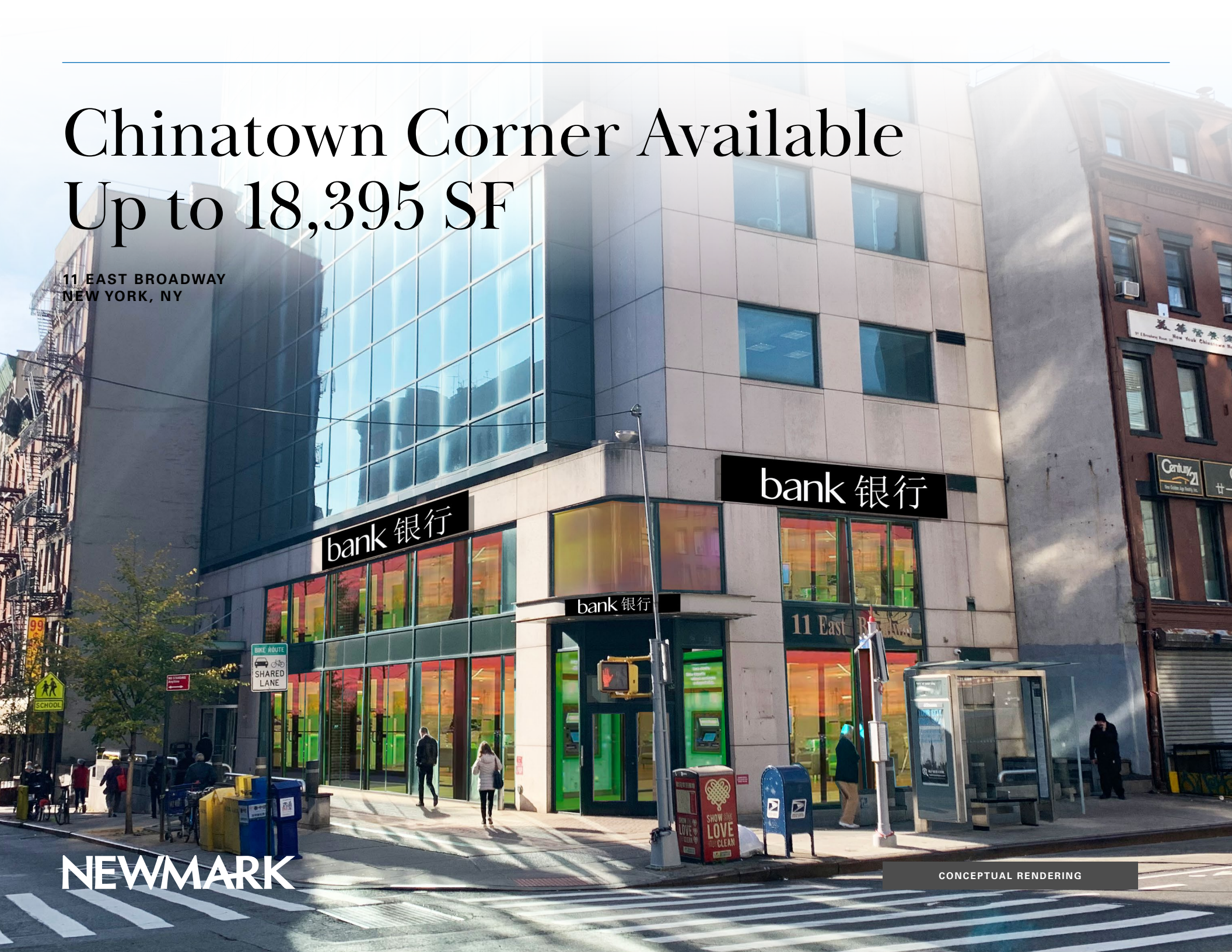


# Chinatown Corner Available Up to 18,395 SF

11 EAST BROADWAY  
NEW YORK, NY



**NEWMARK**

CONCEPTUAL RENDERING

---

**PROPERTY DETAILS**

# 11 East Broadway

**Location**

Southwest corner of Catherine Street

**Approximate Size**

Ground Floor	4,698 SF
Lower Level	4,697 SF
Second Floor	4,500 SF
Third Floor	4,500 SF
Total	18,395 SF

**Frontage**

Ground Floor	107 FT wraparound
Second Floor	128 FT wraparound
Third Floor	115 FT wraparound

**Ceiling Heights**

Ground Floor	12 FT
Lower Level	11 FT
Second Floor	11 FT
Third Floor	11 FT

**Possession**

Immediate

**Site Status**

Formerly HSBC

**Neighbors**

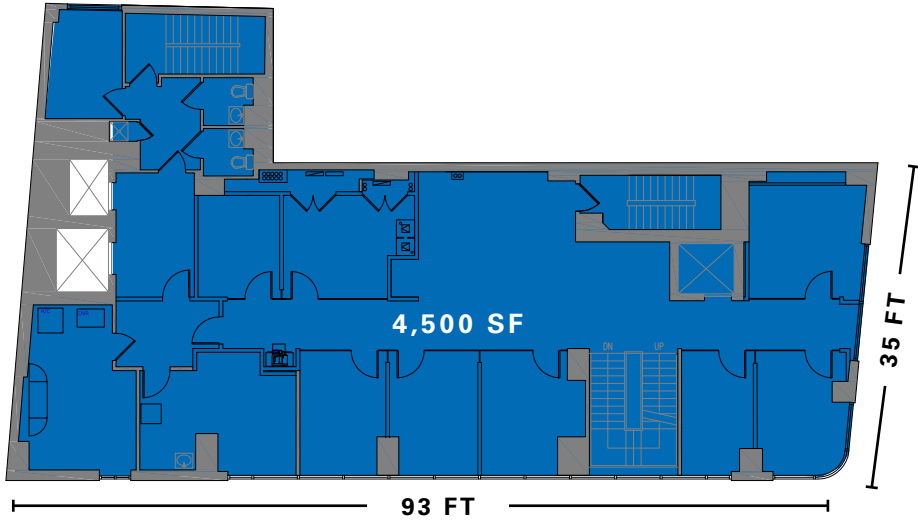
One Police Plaza, New York County Supreme Court, Chatham Square, Knickerbocker Village, Columbus Park, Thurgood Marshall United States Supreme Court and the US District Court

**Comments**

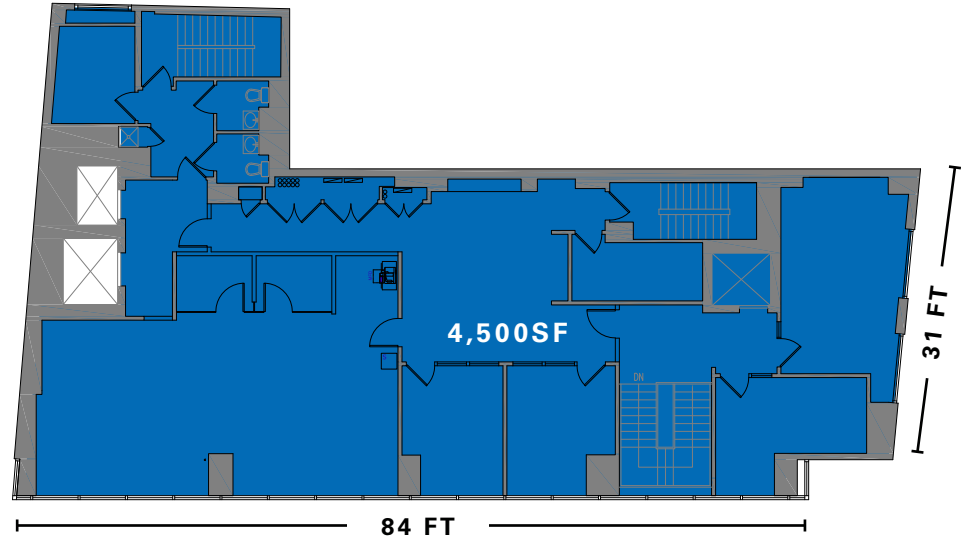
Built bank branch in the heart of Chinatown/City Hall submarket  
Steps from the New York City courthouses which draw significant daytime traffic  
Floor-to-ceiling glass storefront with prominent signage opportunities  
Ground floor can be leased on its own  
All uses considered; great for banks, medical, offices and more

**FLOOR PLANS**

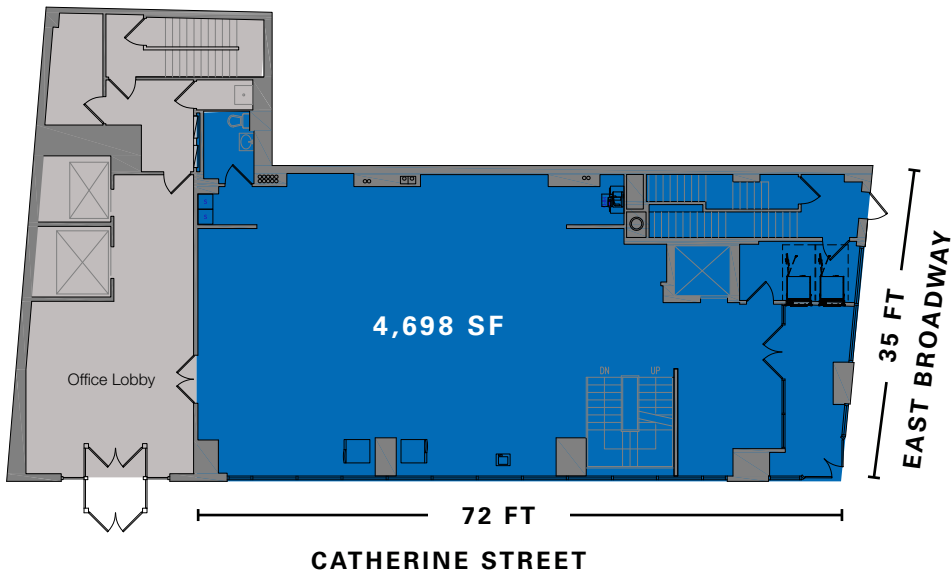
Second Floor



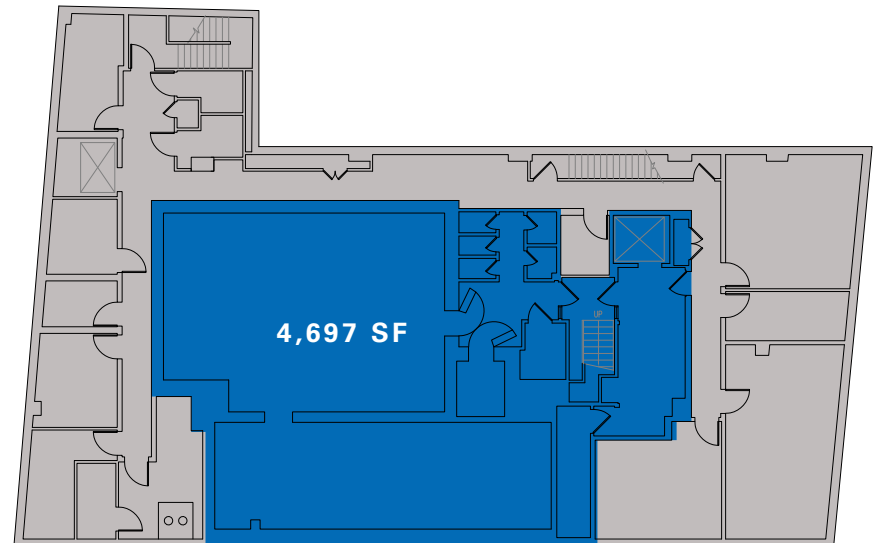
Third Floor



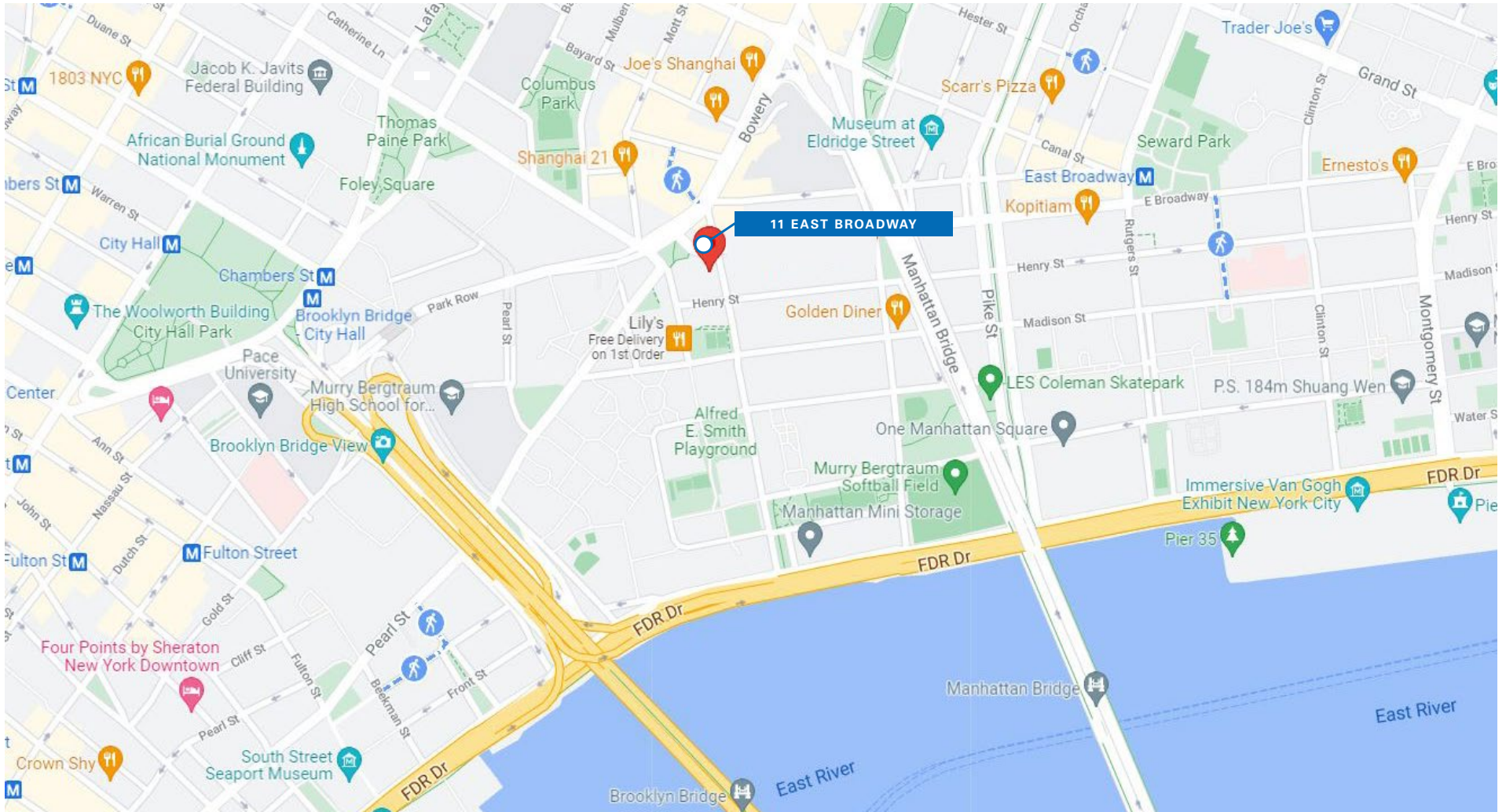
Ground Floor



Lower Level



## AREA MAP



## CONTACT

### Jeffrey D Roseman

t 212-372-2430

jeffrey.roseman@nrmk.com

### Craig Slosberg

t 212-372-2398

craig.slosberg@nrmk.com

### Dan Oliver

t 631-673-0807

dan.oliver@nrmk.com

[nrmk.com](http://nrmk.com)