

FOR LEASE

Class "A" Warehouse/Office Building

755 NW 17th Avenue

Delray Beach, FL 33445



PROPERTY DETAILS

- Total Building Size \pm 28,864 SF on \pm 3.2 Acres
- Available For Lease Units -
 - Suite 101- \pm 14,465 SF with 4,782 SF of Office Space Available May 1, 2020
 - Suite 108 - \pm 3,000 SF - Available May 1, 2020
- Grade Level Loading
- Tilt Wall Construction
- Hurricane Impact Windows
- Located in the Delray Park of Commerce
- Year Built - 2004

LEASE RATE - \$11.50 PSF

OPERATING EXPENSES - \pm \$4.50 PSF CAM



CONTACT

KIRK NELSON

Senior Vice President
+1 561 227 1803
kirk.nelson@cbre.com

JEFF KELLY

Executive Vice President
+1 561 393 1621
jeffrey.kelly@cbre.com

© 2020 CBRE, Inc. This information has been obtained from sources believed reliable. We have not verified it and make no guarantee, warranty or representation about it. Any projections, opinions, assumptions or estimates used are for example only and do not represent the current or future performance of the property. You and your advisors should conduct a careful, independent investigation of the property to determine to your satisfaction the suitability of the property for your needs. CBRE and the CBRE logo are service marks of CBRE, Inc. and/or its affiliated or related companies in the United States and other countries. All other marks displayed on this document are the property of their respective owners.

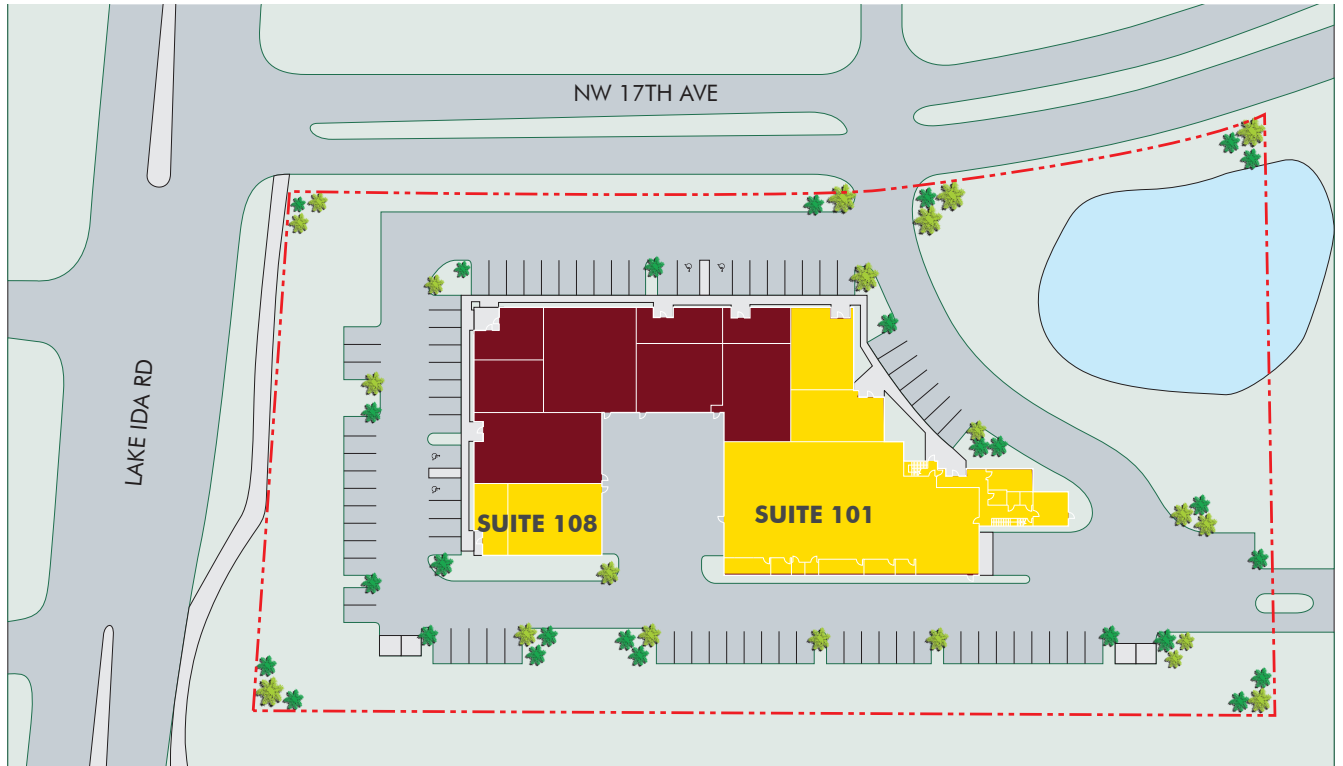
CBRE, Inc.
Licensed Real Estate Broker

CBRE

FOR LEASE
Class "A" Warehouse/Office Building

755 NW 17th Avenue
Delray Beach, FL 33445

SITE PLAN



ADDITIONAL PHOTOS



CONTACT

KIRK NELSON
Senior Vice President
+1 561 227 1803
kirk.nelson@cbre.com

JEFF KELLY
Executive Vice President
+1 561 393 1621
jeffrey.kelly@cbre.com