

# 1180 SOUTH BEVERLY DRIVE

FOR LEASE

FOR MORE INFORMATION, CONTACT:



**JOEL FRANK**  
Senior Vice President  
Lic. 0967530  
T +1 310 550 2513  
joel.frank@cbre.com



**BLAKE FOL**  
Associate  
Lic. 02013968  
T +1 310 550 2683  
blake.fol@cbre.com

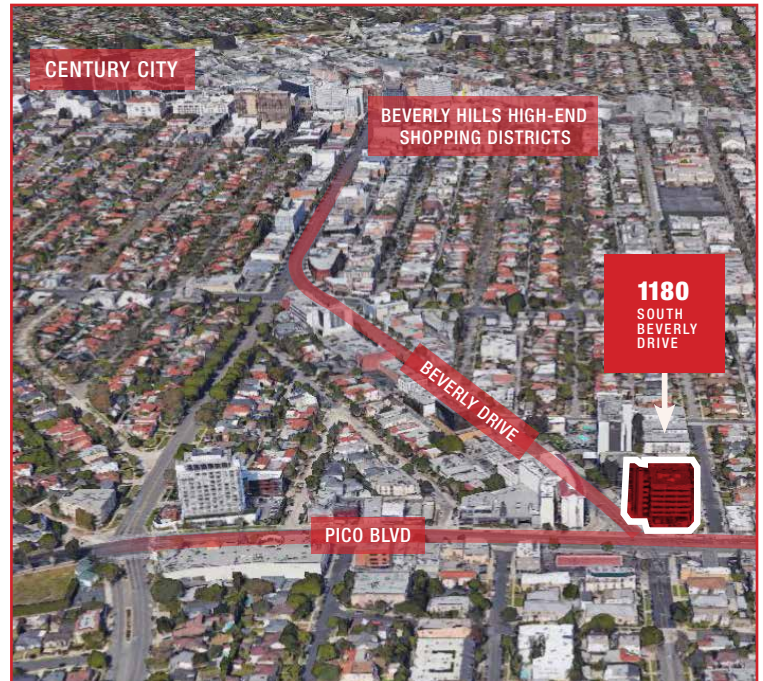
**CBRE**





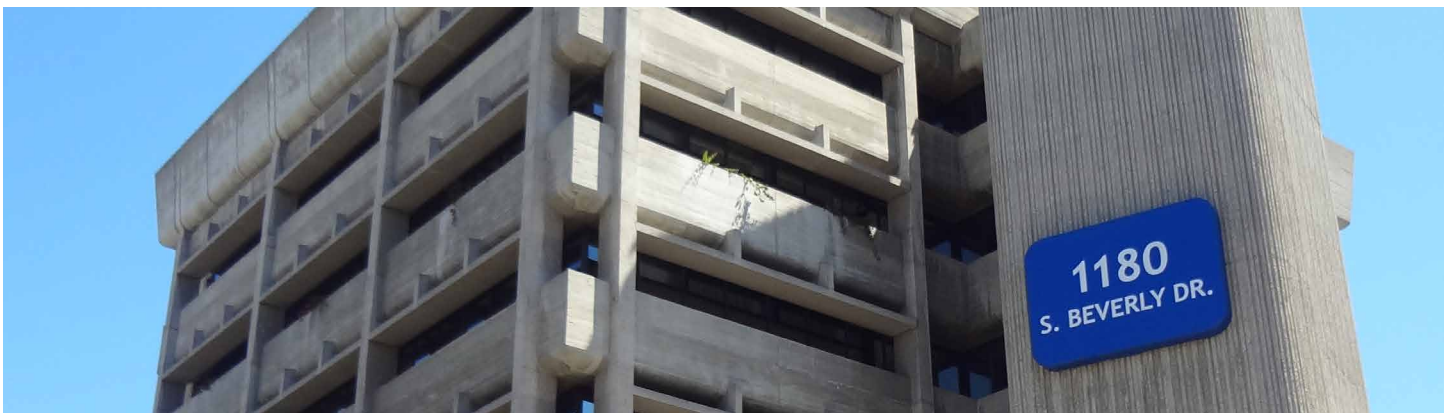
## HIGHLIGHTS

- WALKING DISTANCE TO NUMEROUS AMENITIES  
**\$2/SF BROKER BONUS THROUGH 5/31/2019**
- EXCELLENT WINDOW LINE EXPOSURE & CITY VIEWS
- IMMEDIATE ACCESS TO BEVERLY HILLS RETAIL
- BUILDING HAS BEEN RECENTLY RENOVATED
- CHASE BANK ANCHOR TENANT
- PARKING: TANDEM RESERVED - \$130  
SINGLE RESERVED - \$210  
SINGLE UNRESERVED - \$140

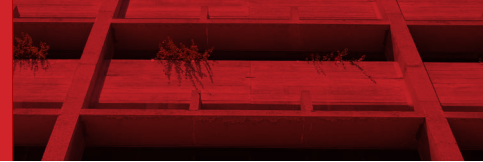


## AVAILABILITY

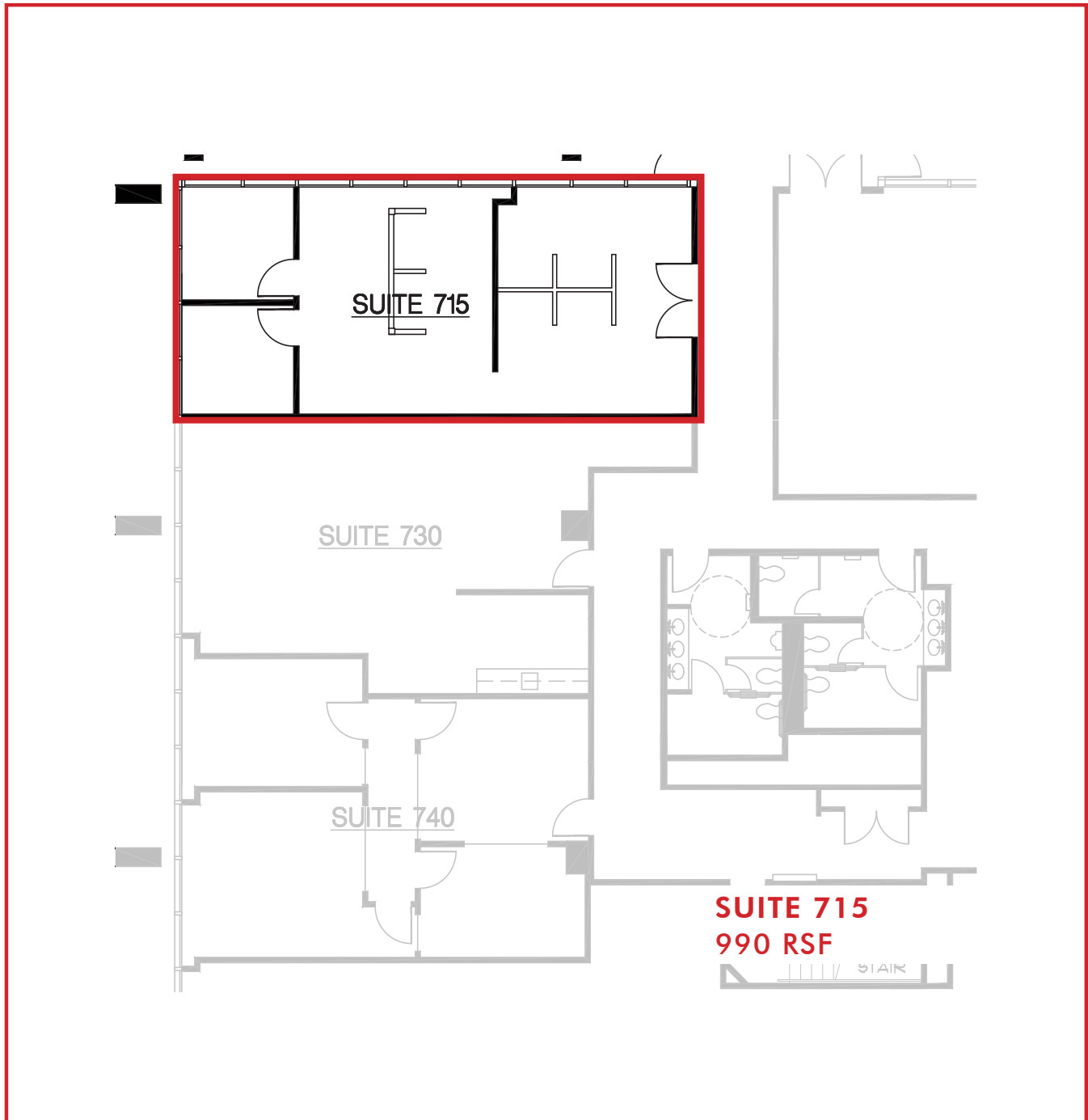
SUITE	RSF		
715	990	\$3.75 - \$3.85/RSF/Month, FS	Two offices & one open space



© 2019 CBRE, Inc. The information contained in this document has been obtained from sources believed reliable. While CBRE, Inc. does not doubt its accuracy, CBRE, Inc. has not verified it and makes no guarantee, warranty or representation about it. It is your responsibility to independently confirm its accuracy and completeness. Any projections, opinions, assumptions or estimates used are for example only and do not represent the current or future performance of the property. The value of this transaction to you depends on tax and other factors which should be evaluated by your tax, financial and legal advisors. You and your advisors should conduct a careful, independent investigation of the property to determine to your satisfaction the suitability of the property for your needs.



# FLOOR PLANS



**FOR MORE INFORMATION, PLEASE CONTACT:**

**JOEL FRANK**  
Senior Vice President  
Lic. 0967530  
T +1 310 550 2513  
joel.frank@cbre.com

**BLAKE FOL**  
Associate  
Lic. 02013968  
T +1 310 550 2683  
blake.fol@cbre.com