



Hwy. 73 at Cornerview Rd.

Hwy. 73 Geismar, Geismar, Louisiana 70734

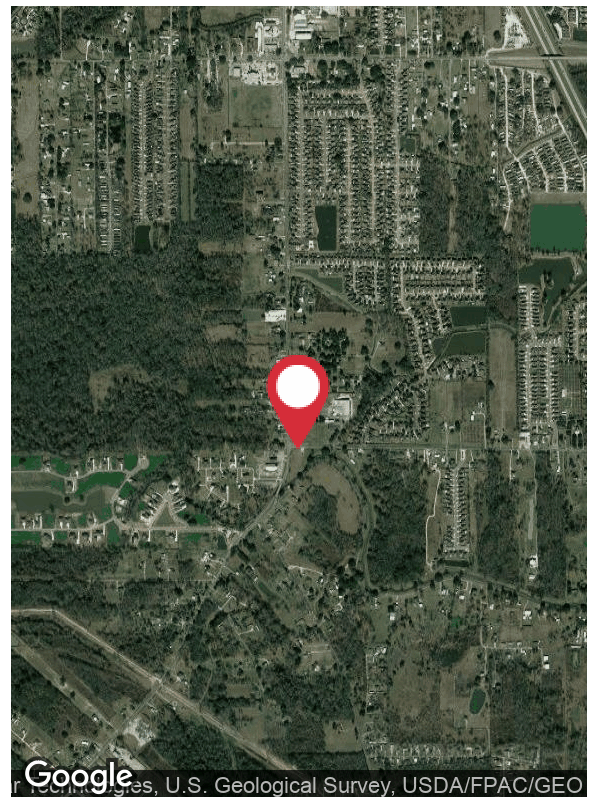
Property Highlights

- Beautiful Corner development tract. Located in fast growing Ascension Parish. Great tract for development of single family subdivision, condo community, apartments, assisted living, nursing home.
- - +/- 2.69 Acres of vacant land available at the corner of Hwy. 73 and Cornerview Road in Geismar.
- - Great location for a retail development
- - Zoned C-2
- - Contact agent for more information

Sale Price

\$468,705

CALL OR EMAIL FOR MORE INFORMATION



Google, U.S. Geological Survey, USDA/FPAC/GEO

For more information

Grey Hammett III

O: 225 295 0800 | C: 225 588 4343
grey@latterblum.com

1700 City Farm Drive
Baton Rouge, LA 70806
225 295 0800 tel
latterblum.com

NO WARRANTY OR REPRESENTATION, EXPRESS OR IMPLIED, IS MADE AS TO THE ACCURACY OF THE INFORMATION CONTAINED HEREIN, AND THE SAME IS SUBMITTED SUBJECT TO ERRORS, OMISSIONS, CHANGE OF PRICE, RENTAL OR OTHER CONDITIONS, PRIOR SALE, LEASE OR FINANCING, OR WITHDRAWAL WITHOUT NOTICE, AND OF ANY SPECIAL LISTING CONDITIONS IMPOSED BY OUR PRINCIPALS NO WARRANTIES OR REPRESENTATIONS ARE MADE AS TO THE CONDITION OF THE PROPERTY OR ANY HAZARDS CONTAINED THEREIN ARE ANY TO BE IMPLIED. LICENSED IN LOUISIANA.

For Sale

Vacant Land

2.69 Acres | \$174,240 / AC

