

RENTAL RATES SLASHED!!!

VIP PLAZA: PROFESSIONAL OFFICE SUITES FOR LEASE



34400-34432 Date Palm Dr., Cathedral City
Between Dinah Shore & Victoria Drive

SITE FEATURES

- All Suites with Great Frontage
- Parking (4:1000) - 60 (2 Handicap)
- Commercial Zoning
- Built in 1982
- APN: 673-140-004

NORTH BUILDING: Ground Floor:

- Suite A: ~~LEASED~~ 1,406 SF ~~\$.80/SF MG~~
- Suite B: ~~LEASED~~ 1,134 SF ~~\$.95/SF MG~~
- Suite C: ~~LEASED~~ 1,330 SF ~~\$.80/SF MG~~

NORTH BUILDING: 2nd Floor:

- Suite F: ~~LEASED~~ 980 SF ~~\$.75/SF MG~~

SOUTH BUILDING: Ground Floor:

- Suite J: 1,100 SF \$.90/SF MG
- Suite K: 1,025 SF \$.90/SF MG

SOUTH BUILDING: 2nd Floor:

- Suite N: ~~LEASED~~ 534 SF ~~\$.60/SF MG~~
- Suite Q: ~~LEASED~~ 1,368 SF ~~\$.50/SF MG~~
- Suite U: ~~LEASED~~ 576 SF ~~\$.65/SF MG~~



www.baxleyproperties.com
Phone: 760-773-3310
Fax: 760-773-3013
73712 Alessandro Drive, Ste B-4, Palm Desert, CA 92260

Dick Baxley
dbaxley@baxleyproperties.com
760-773-3310

CAL BRE License # 00531516

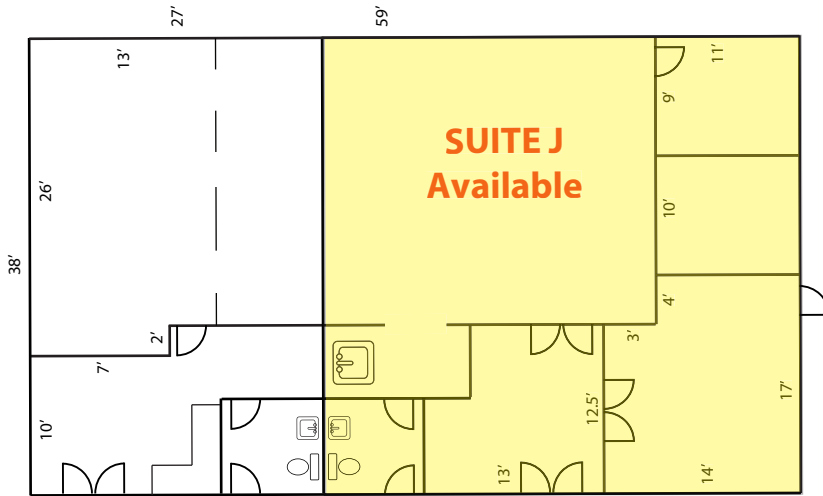
DISCLAIMER:

The information above has been obtained from sources believed reliable. While we do not doubt its accuracy, we have not verified it and make no guarantee, warranty or representation about it. It is your responsibility to independently confirm its accuracy and completeness. Any projections, opinions, assumptions or estimates used are for example only, and do not represent the current or future performance of the property.

34400-34432 Date Palm, Cathedral City, CA

FLOORPLAN

South Building (Ground Floor)



All measurements are approximate.