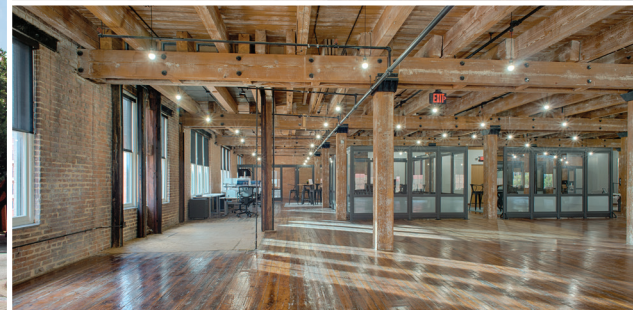


# 208 N MARKET

CRESCENT WEST END

[www.crescentwestend.com](http://www.crescentwestend.com)

Turnkey, Move-In Ready Suites with Short Term Leasing Opportunities



## Available Space

Suite 200 - **3,000 RSF**

Suite 420 - **4,129 RSF**

Suite 490 - **4,861 RSF**

## Building Features

- Turn of the Century Landmark Building
- Located on the Corner of Market and Pacific Street
- Walking Distance to Numerous Restaurants and Retail Shops
- On-site Security
- New Electrical, Telecommunications, and Plumbing
- An Energy Efficient Air Conditioning and Heating System
- Adjacent to the Downtown DART Rail Station
- Abundant Surface Lot and Metered Street Parking Nearby
- Fiber Provided by Logix



**BEN CUZEN**  
(972) 850-2714  
[bcuzen@hpitx.com](mailto:bcuzen@hpitx.com)

**LUKE AVILES**  
(972) 850-2715  
[laviles@hpitx.com](mailto:laviles@hpitx.com)

**HUNTER LEE**  
(214) 954-3304  
[hlee@hpitx.com](mailto:hlee@hpitx.com)

No warranty or representation, expressed or implied, is made as to the accuracy of the information contained herein, and same is submitted subject to errors, omissions, change of price, rental or other conditions, withdrawal without notice, and to any special listing conditions imposed by the principals.

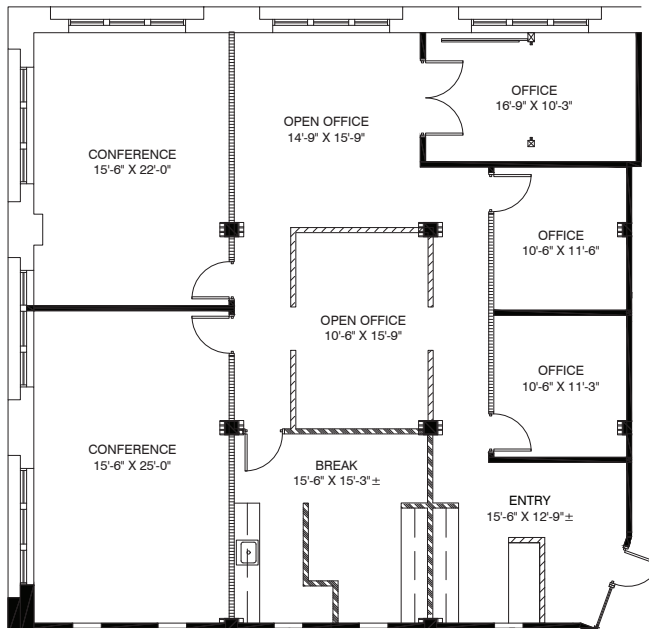
# 208 N MARKET

CRESCENT WEST END

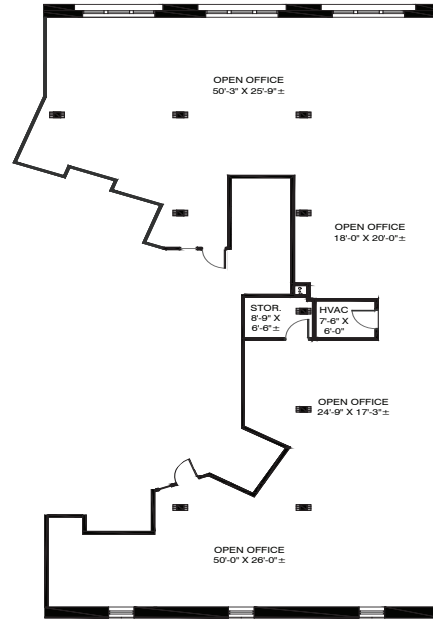
www.crescentwestend.com

Turnkey, Move-In Ready Suites with Short Term Leasing Opportunities

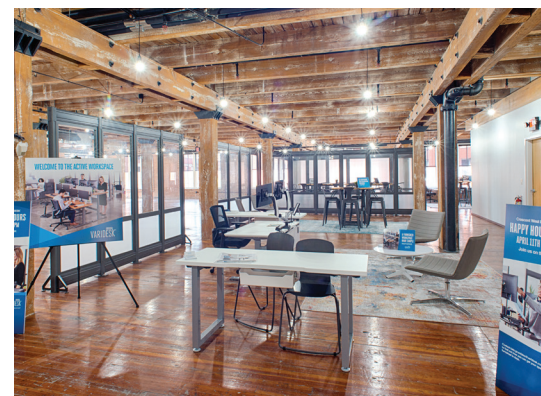
## Typical Floorplans



Suite 200 - **3,000 RSF**



Suite 420 - **4,129 RSF**



**BEN CUZEN**  
(972) 850-2714  
bcuzen@hpitx.com

**LUKE AVILES**  
(972) 850-2715  
laviles@hpitx.com

**HUNTER LEE**  
(214) 954-3304  
hlee@hpitx.com

No warranty or representation, expressed or implied, is made as to the accuracy of the information contained herein, and same is submitted subject to errors, omissions, change of price, rental or other conditions, withdrawal without notice, and to any special listing conditions imposed by the principals.