



**METROWEST
COMMERCIAL R.E.**

FOR LEASE

56 LOWLAND STREET, HOLLISTON, MA 01746



Bldg Size:	Single Story +/- 44,580 s.f.
Parcel Size:	4.1 acres
Zoning:	Industrial
Office Area:	3,121 s.f. (7%)
HVAC:	by Gas
Utilities:	Town Water and Sewer
Bldg construction:	Masonry
Loading:	1 drive-in door (12'x14') and 4 docks
Ceiling height:	18' height
Fire Suppression:	Dry sprinklers
Parking:	50 spaces
R.E. Taxes:	\$33,404 (2018)

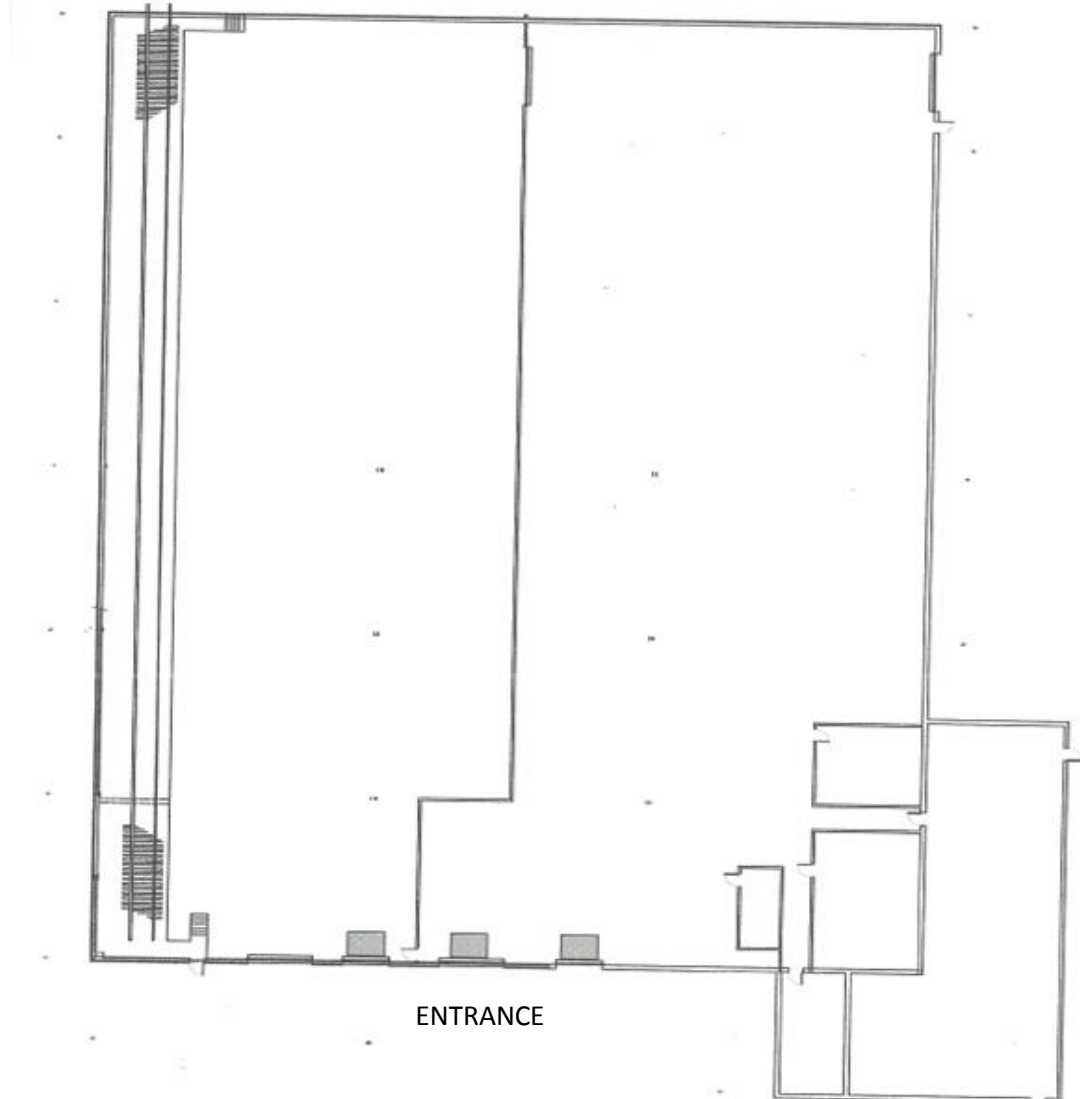
ERIC BROSLER – LISTING BROKER
508.370.0003 – OFFICE CELL 508-272-3318
www.METROWESTCRE.com

The above information is from sources deemed reliable but cannot be guaranteed to be completely accurate. Prospective Lessees are advised to verify information. MWCRE represents the Lessor. MWC RE does not co-broke with Principals nor recognize representation after the first showing.



**METROWEST
COMMERCIAL R.E.**

56 LOWLAND STREET, HOLLISTON, MA 01746

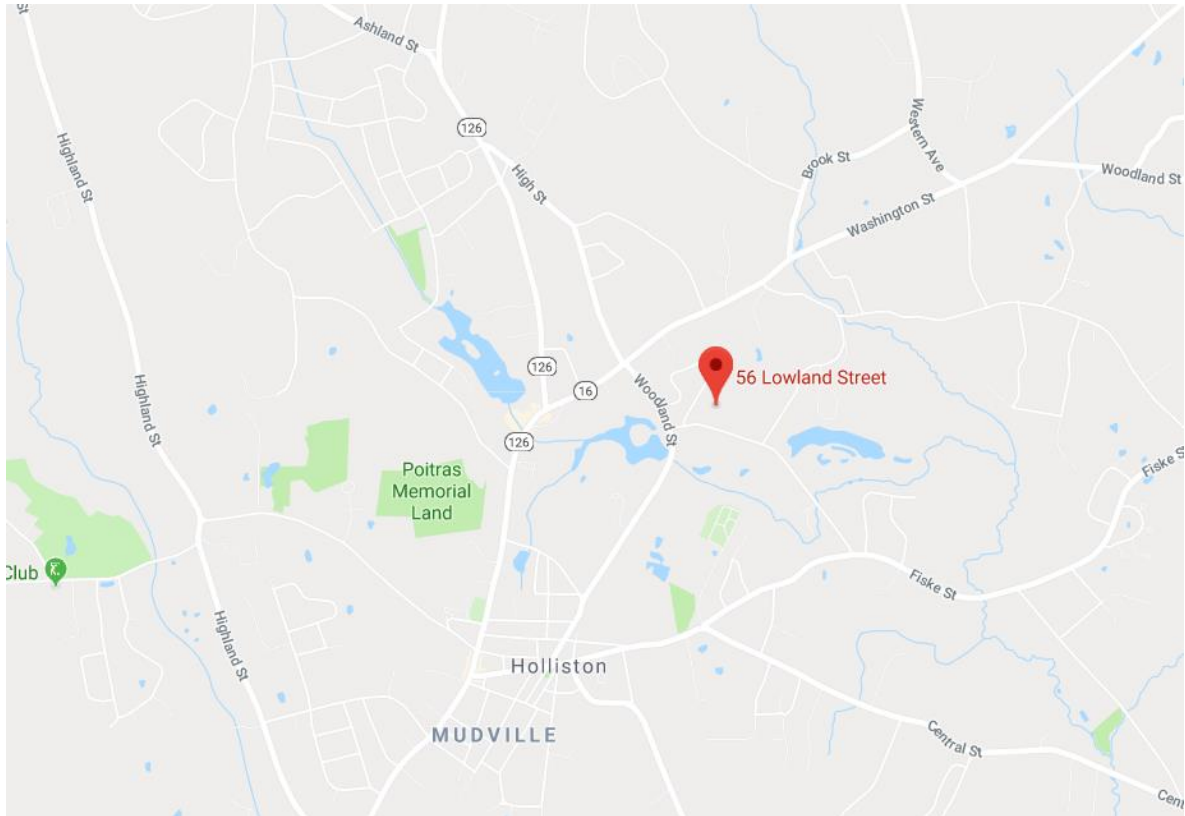


ERIC BROSLER – LISTING BROKER
508.370.0003 – OFFICE
30 TURNPIKE RD., SUITE 10, SOUTHBOROUGH, MA 01772
www.METROWESTCRE.com



**METROWEST
COMMERCIAL R.E.**

56 LOWLAND STREET, HOLLISTON, MA 01746



ERIC BROSLER – LISTING BROKER
508.370.0003 – OFFICE
30 TURNPIKE RD., SUITE 10, SOUTHBOROUGH, MA 01772
www.METROWESTCRE.com