

Oakwood Square

1900-1970 Dairy Rd, Melbourne, FL 32904

Office, Medical and Retail Space Available for Lease



OFFERING SUMMARY

Available SF:	1,365 - 15,628 SF
Lease Rate:	\$13.00 - 14.00 SF/yr (NNN)
Acreage:	4.4 Acres
Year Built:	1985
Facility SF:	46,884 SF
Renovated:	2017
Zoning:	C-1 Low Density Commercial

PROPERTY OVERVIEW

Oakwood Square is a three building office, medical and light retail complex with a variety of unit sizes available for lease. Ample parking throughout the complex. Space available from 1,365 sf up to a full building at 16,404 sf. Base rent starts is \$13.00 to \$14.00 per SF plus \$2.57/sf CAM.

LOCATION OVERVIEW

Site provides easy access to all of Melbourne, Palm Bay, Beaches and surrounding communities via Interstate 95, US 192, and US 1. From open space to multi-office there are numerous configurations to choose from.

PROPERTY HIGHLIGHTS

- Great location in the heart of W. Melbourne on Dairy Road
- All roofs replaced in 2016 and buildings painted in 2018.
- Parking lot resurfacing starting in 2022.
- Excellent value priced office space!
- Several types and sizes of units available immediately
- Interiors to include new carpet and painting



Adam Rathbun, CCIM, SIOR

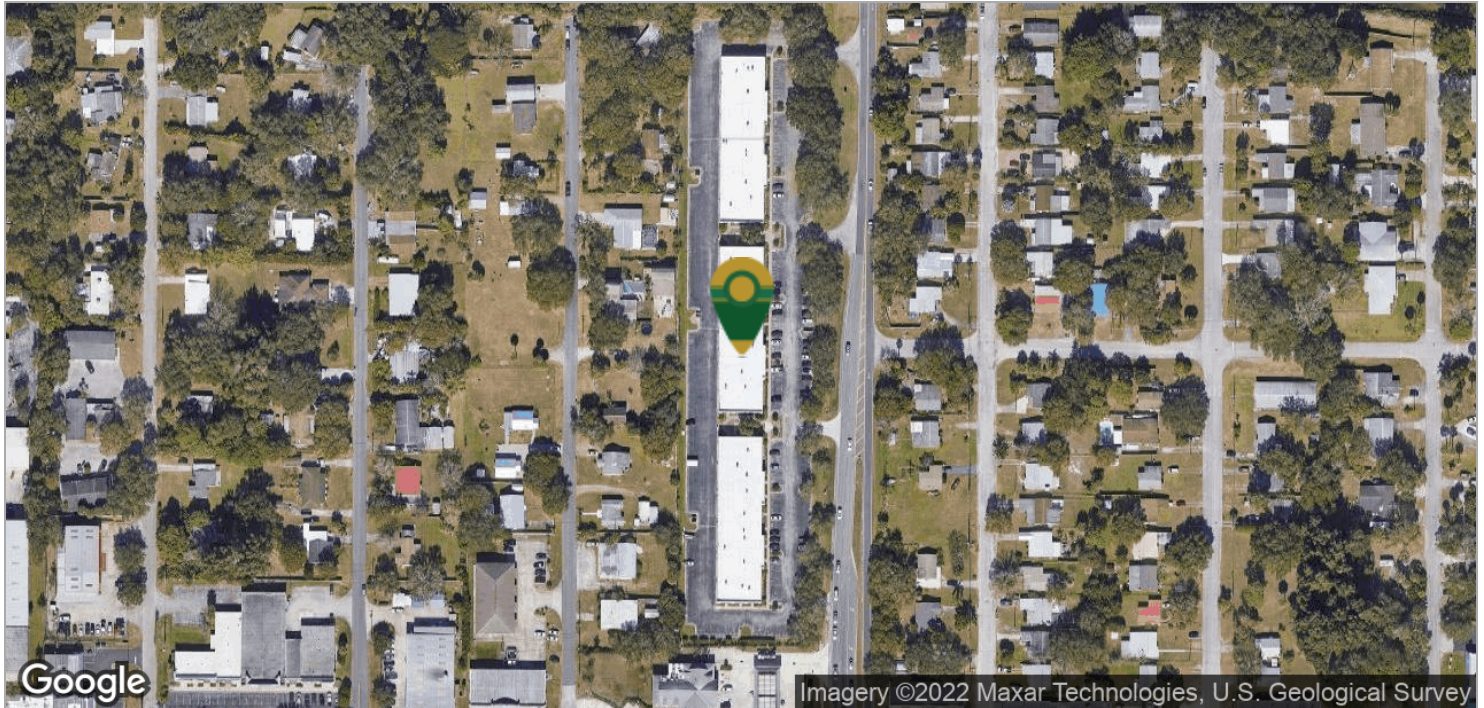
Licensed Real Estate Broker
Cell: 321.266.9200
adam@ullianrealty.com



Oakwood Square

1900-1970 Dairy Rd, Melbourne, FL 32904

Location Maps



Individual Members
Michael S. Ullian
Adam Rathbun

Adam Rathbun, CCIM, SIOR

Licensed Real Estate Broker

Cell: 321.266.9200

adam@ullianrealty.com



SIOR
Individual Members
Michael S. Ullian
Adam Rathbun

The Ullian Realty Corporation 1800 Penn Street Melbourne, FL 32901 321.729.9900 ullianrealty.com

The information provided is subject to change without notice. The Ullian Realty Corporation assumes no responsibility for any errors, omissions, or changes.