

2917 WATERVIEW DRIVE  
ROCHESTER HILLS, MICHIGAN

HI-TECH FOR SALE OR LEASE  
17,420 Square Feet Available



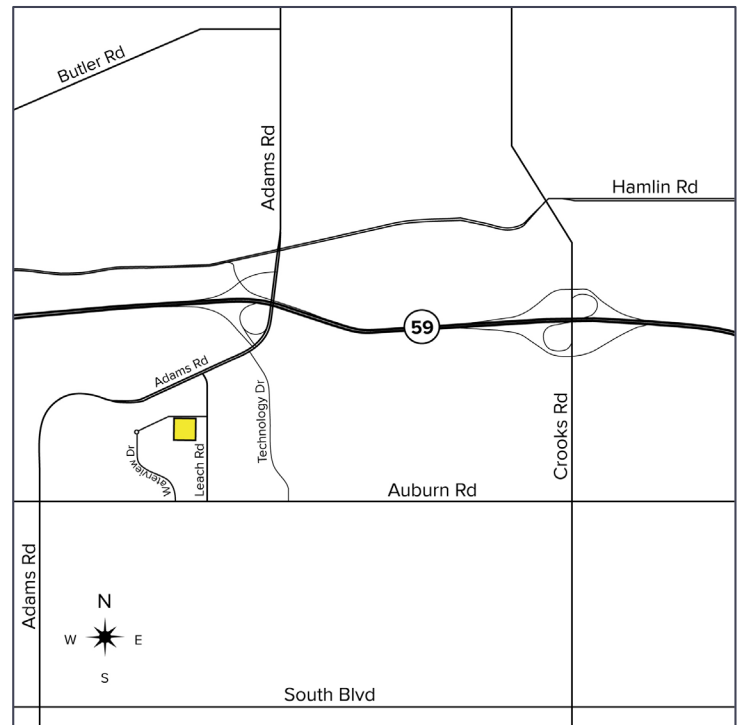
**SIGNATURE  
ASSOCIATES**  
KNOW SIGNATURE | KNOW RESULTS

**EXCELLENT HI-TECH BUILDING**



## PROPERTY FEATURES

- First class corporate image building completely renovated in 2016 with high end finishes
- 17,420 square feet available
- 12,920 square feet of office
- 16'6" clear height
- (1) 12x14 grade level door
- Zoned Light Industrial
- 59+/- parking spaces
- Executive offices with private washroom
- Building has a generator
- (4) bathrooms
- Direct access to M-59, seconds from I-75 and FCA World Headquarters
- Lease Rate: \$8.95/sq.ft. NNN
- Sale Price: Contact Broker



For more information, please contact:

**KRIS PAWLOWSKI**  
(248) 359 3801  
kpawlowski@signatureassociates.com

**DAVE MILLER**  
(248) 948 4183  
dmiller@signatureassociates.com

**SIGNATURE ASSOCIATES**  
One Towne Square, Suite 1200  
Southfield, MI 48076  
www.signatureassociates.com

# 2917 Waterview Drive – Rochester Hills, Michigan

## Hi-Tech For Sale or Lease

17,420  
Square Feet  
AVAILABLE

### Interior Photos



For more information, please contact:

**KRIS PAWLOWSKI**  
(248) 359 3801  
kpawlowski@signatureassociates.com

**DAVE MILLER**  
(248) 948 4183  
dmiller@signatureassociates.com

**SIGNATURE ASSOCIATES**  
One Towne Square, Suite 1200  
Southfield, MI 48076  
www.signatureassociates.com

Information is subject to verification and no liability for errors or omissions is assumed. Price is subject to change and listing withdrawal.

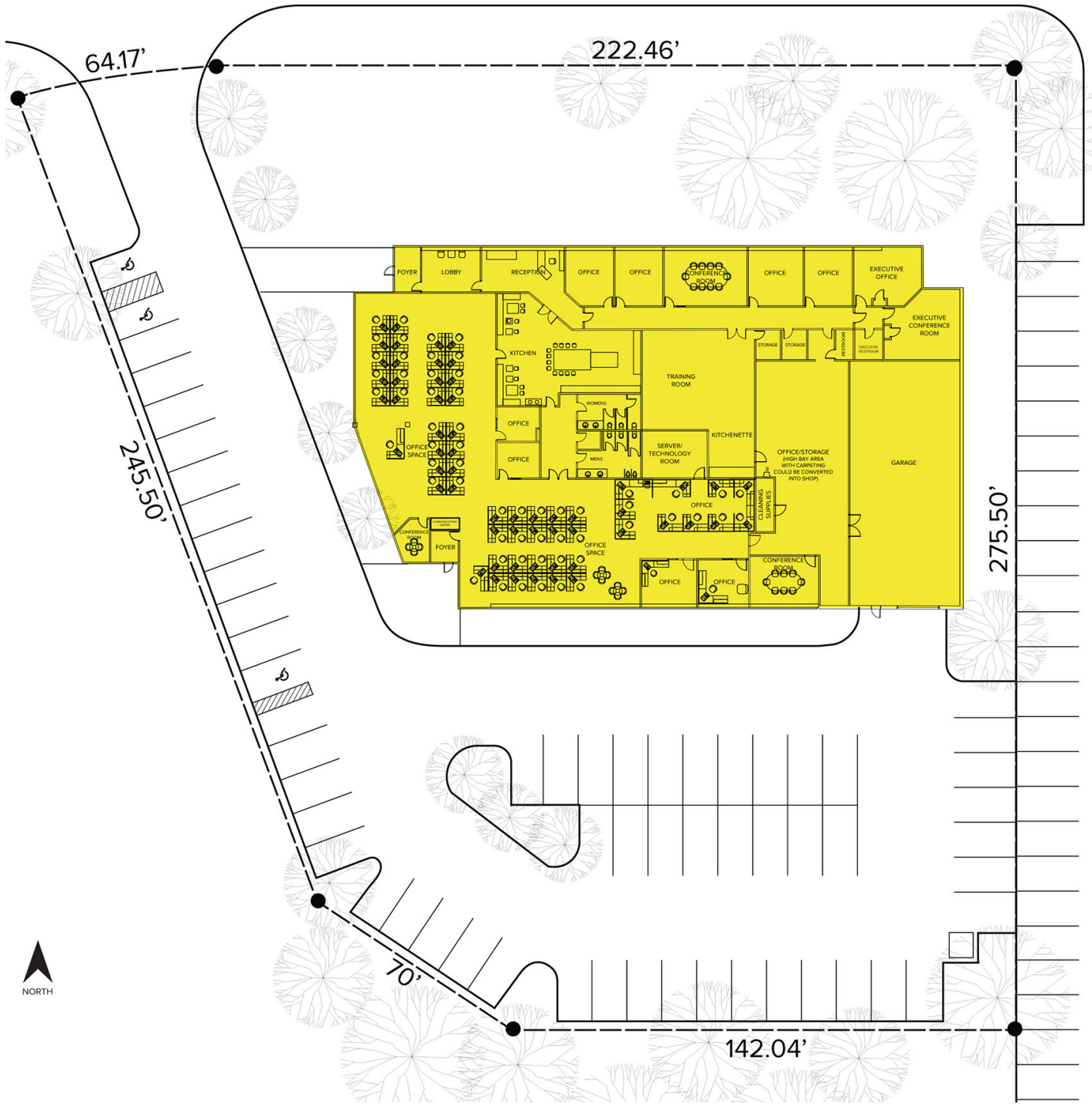
# 2917 Waterview Drive – Rochester Hills, Michigan

## Hi-Tech For Sale or Lease

17,420  
Square Feet  
AVAILABLE

### Site Plan

WATERVIEW DRIVE



For more information, please contact:

**KRIS PAWLOWSKI**  
(248) 359 3801  
kpawlowski@signatureassociates.com

**DAVE MILLER**  
(248) 948 4183  
dmiller@signatureassociates.com

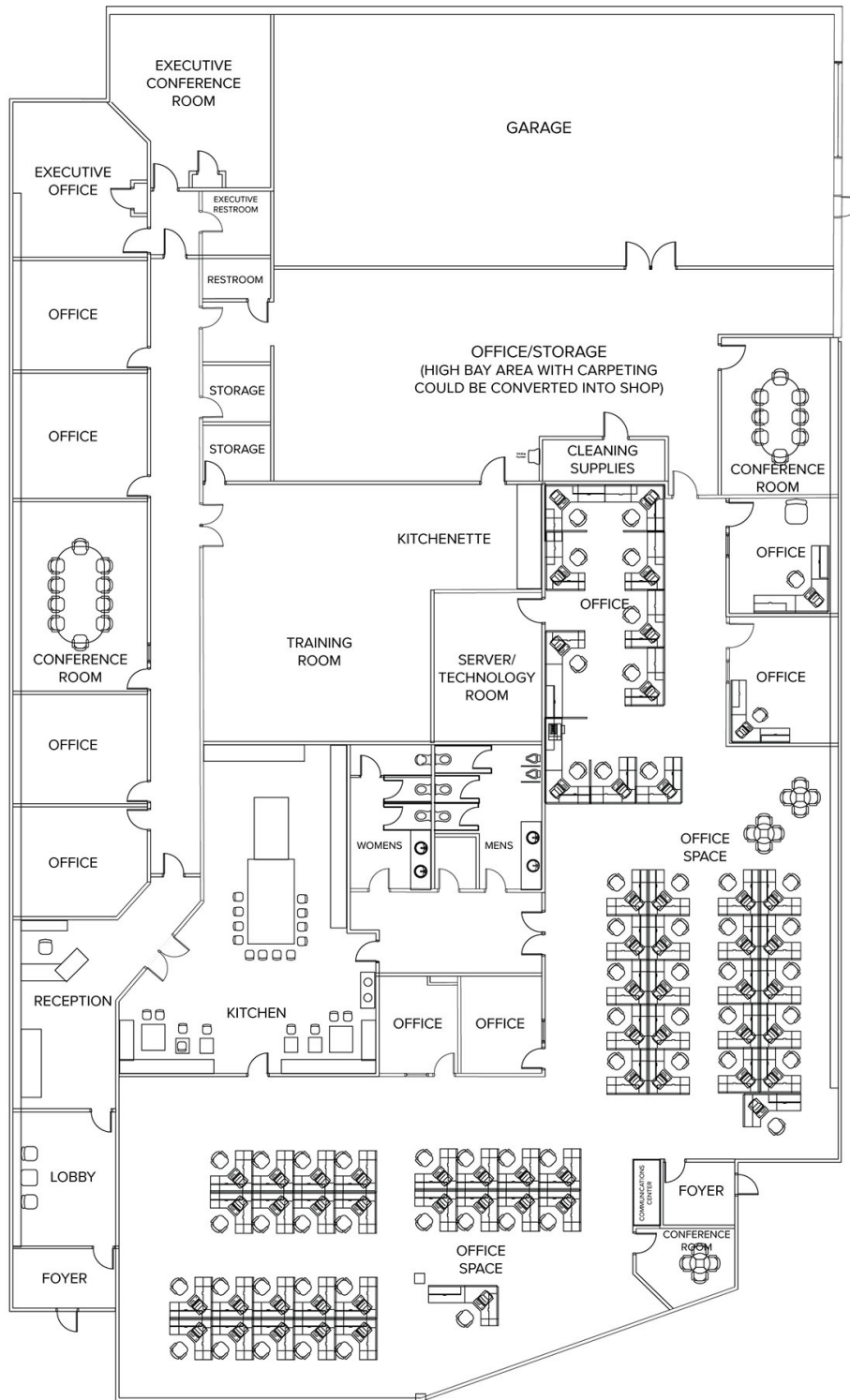
**SIGNATURE ASSOCIATES**  
One Towne Square, Suite 1200  
Southfield, MI 48076  
www.signatureassociates.com

# 2917 Waterview Drive – Rochester Hills, Michigan

## Hi-Tech For Sale or Lease

17,420  
Square Feet  
AVAILABLE

### Floor Plan



For more information, please contact:

**KRIS PAWLOWSKI**  
(248) 359 3801  
kpawlowski@signatureassociates.com

**DAVE MILLER**  
(248) 948 4183  
dmiller@signatureassociates.com

**SIGNATURE ASSOCIATES**  
One Towne Square, Suite 1200  
Southfield, MI 48076  
www.signatureassociates.com

# 2917 Waterview Drive – Rochester Hills, Michigan

Hi-Tech For Sale or Lease

17,420  
Square Feet  
AVAILABLE

Aerial



For more information, please contact:

**KRIS PAWLOWSKI**  
(248) 359 3801  
kpawlowski@signatureassociates.com

**DAVE MILLER**  
(248) 948 4183  
dmiller@signatureassociates.com

**SIGNATURE ASSOCIATES**  
One Towne Square, Suite 1200  
Southfield, MI 48076  
www.signatureassociates.com