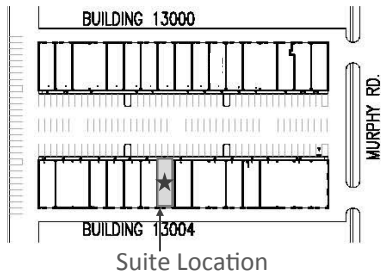
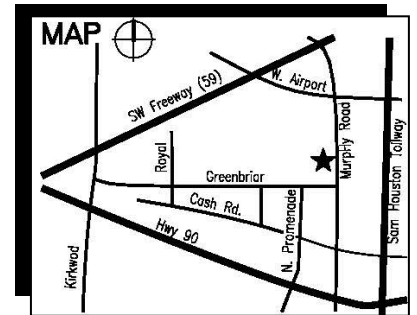
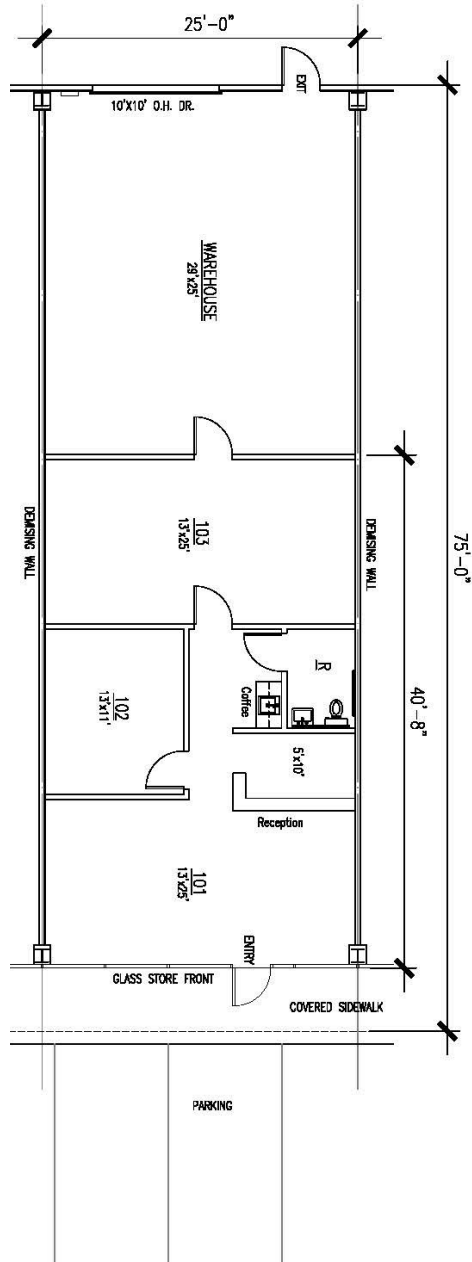


SUITE 218

**GREENBRIAR
BUSINESS PARK**
13004 Murphy Rd
Stafford, TX



BUILDING FEATURES:

Rail Served NO
Sprinklered NO
Floor Level GRADE
Clear Height 16'

AVAILABLE SPACE:

Office Sq. Ft.
Warehouse Sq. Ft.
Total Sq. Ft. 1,875±

Note: All dimensions are approximate and subject to field verifications.

FOR LEASING INFORMATION CONTACT
ROBYN BERRY
713.629.5535
robbyn@evtex.com

**RYCORE
CAPITAL**

