

Industrial/Flex Building - ONLY ONE SPACE LEFT

27 Centre Avenue

NEW ROCHELLE, NY 10801

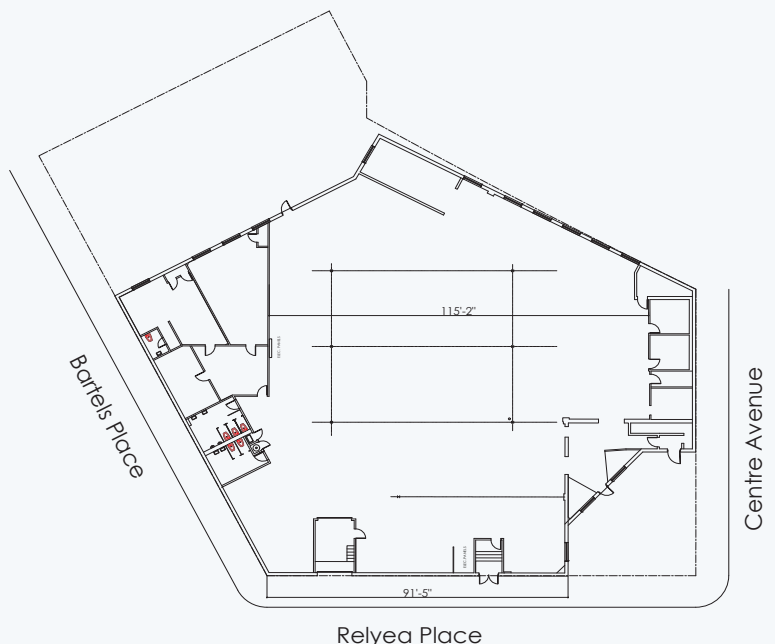


PROPERTY FEATURES

- ➔ ~~32,000 SF~~ DIVISIBLE TO 16,000 SF
- ➔ ONLY 4,200 SF LEFT
- ➔ LI ZONING
- ➔ 12' AND 14' CEILING HEIGHTS:
- ➔ 1 INTERIOR LOADING DOCK
- ➔ 2 DRIVE-IN DOORS
- ➔ FULLY SPRINKLERED
- ➔ WIDE COLUMN SPANS
- ➔ GAS HEAT
- ➔ 5 BATHROOMS
- ➔ CALL FOR PRICING

ACCESS

NEW ENGLAND THRUWAY / 



FIRST FLOOR PLAN

scale: $\frac{3}{32}$ " = 1'-0" (D size)

CONTACT EXCLUSIVE AGENT

PAUL PALLETT

PPALLET@GREINER-MALTZ.COM

(914) 837-5824

Any information set forth herein has been obtained from sources deemed reliable, however, we have not verified it, and make no representation or warranty of any kind, including without limitation; condition: either latent or patent, size or manner of construction of the property, compliance with local law, and environmental conditions. All information submitted herein is subject to errors and omissions, and the right of our principal(s), to withdraw, modify, or condition the listing with-out prior notice. Broker cooperation encouraged.