

FOR LEASE

Westcliff Tower

6900 Westcliff Drive, Las Vegas, NV 89145



Property Highlights

- Class A office building
- Adjacent to the U.S. 95 and Summerlin Parkway
- Approximately 10 minutes to downtown Las Vegas
- Monument signage available
- Covered parking available
- Ample parking

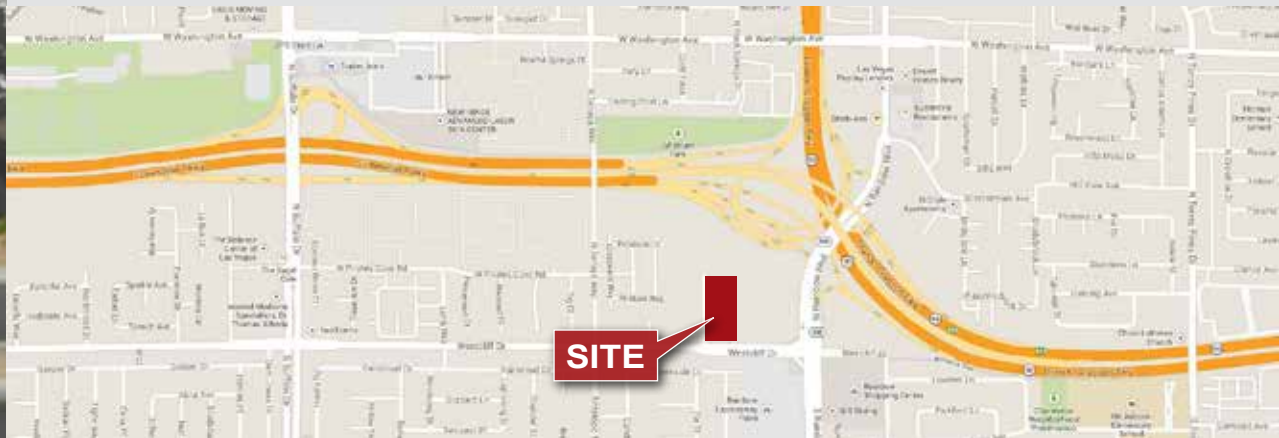
Suites Available	Square Footage
Suite 501	4,327
Suite 502	1,235
Suite 710	3,936

Available Square Feet	±1,235 to 4,327
Lease Rate	\$2.00 psf/month
Lease Type	Full Service Gross
Lease Terms	3-5 Years
TI Allowance	Negotiable

Property Overview

Westcliff Tower is an eight story class A office building, consisting of approximately 80,479 square feet.

The building is situated on Westcliff Drive west of Rainbow Boulevard adjacent to U.S. 95.



Jayne Cayton
Vice President
Lic. #S.0043335
702.734.4506
jcayton@voitco.com

6385 S. Rainbow Blvd., Suite 100, Las Vegas, NV 89118
702.734.4500 Tel | 702.733.7690 Fax | Lic #01333376 | www.voitco.com

Owned & managed by:



Exclusively listed by:

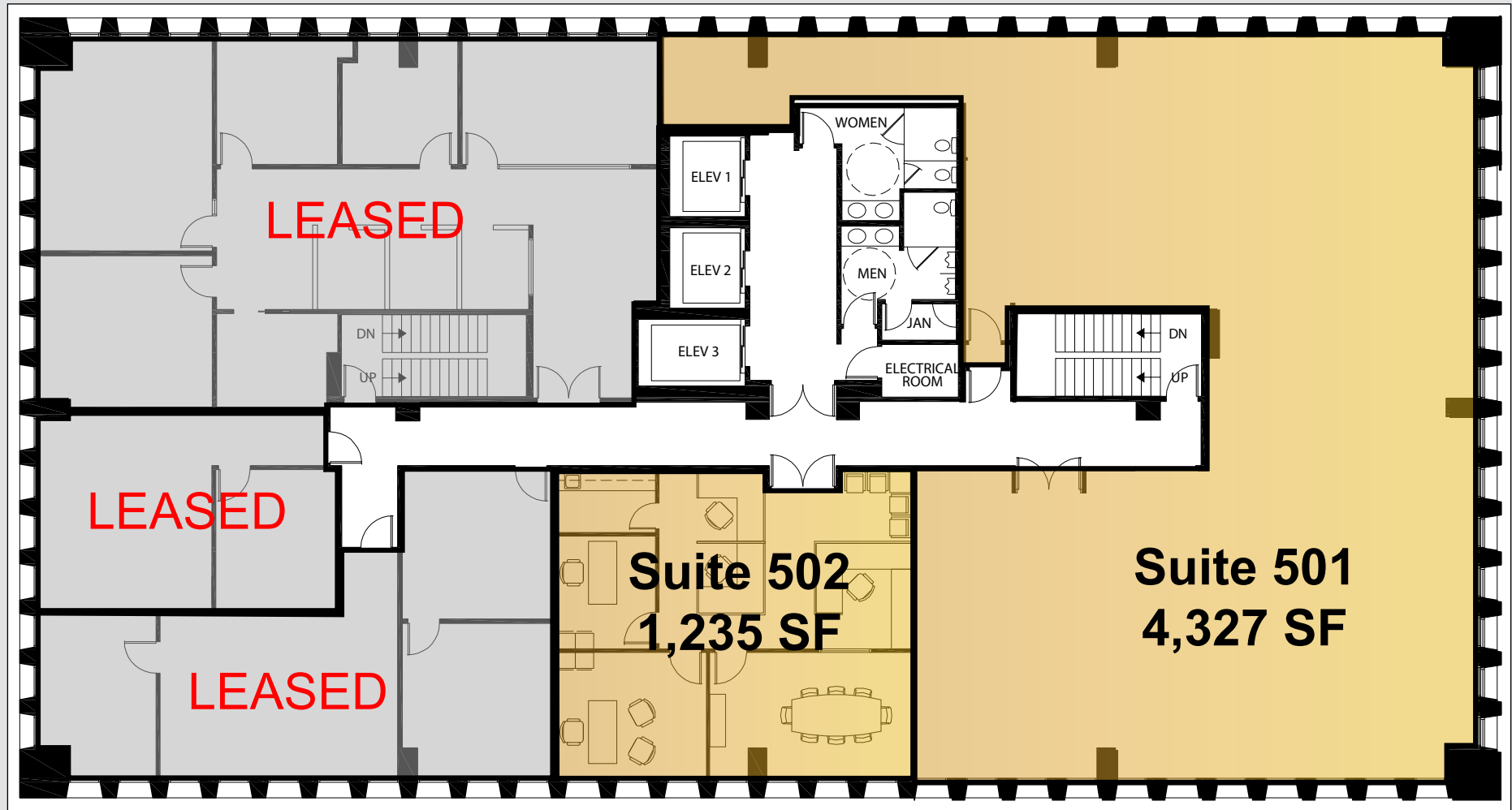


REAL ESTATE SERVICES

FOR LEASE

Westcliff Tower

6900 Westcliff Drive, Las Vegas, NV 89145



Fifth Floor

Jayne Cayton
Vice President
Lic. #S.0043335
702.734.4506
jcayton@voitco.com

6385 S. Rainbow Blvd., Suite 100, Las Vegas, NV 89118
702.734.4500 Tel | 702.733.7690 Fax | Lic #01333376 | www.voitco.com

Owned & managed by:



Exclusively listed by:

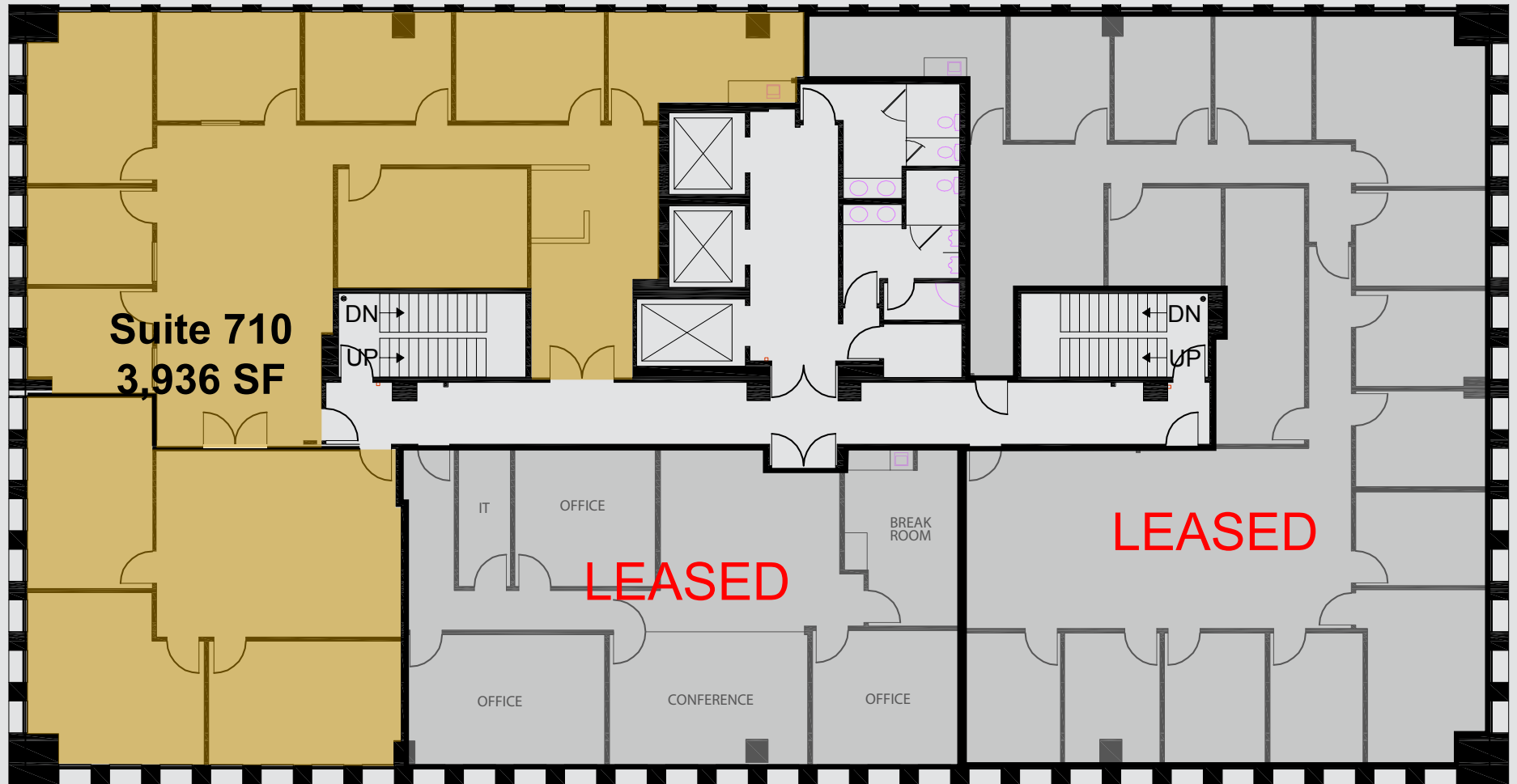


REAL ESTATE SERVICES

FOR LEASE

Westcliff Tower

6900 Westcliff Drive, Las Vegas, NV 89145



Seventh Floor

Jayne Cayton
Vice President
Lic. #S.0043335
702.734.4506
jcayton@voitco.com

6385 S. Rainbow Blvd., Suite 100, Las Vegas, NV 89118
702.734.4500 Tel | 702.733.7690 Fax | Lic #01333376 | www.voitco.com

Owned & managed by:



Exclusively listed by:



REAL ESTATE SERVICES