

5717

PACIFIC CENTER

5717 PACIFIC CENTER BLVD. SAN DIEGO, CA 92121



Bill Cavanagh
bill.cavanagh@cushwake.com
858.546.5460
Lic #00905262

Mike Novkov
mike.novkov@cushwake.com
858.546.5412
Lic #01890388

FLOOR PLANS



COLLABORATION AREA



GLASS ROLL-UP DOOR

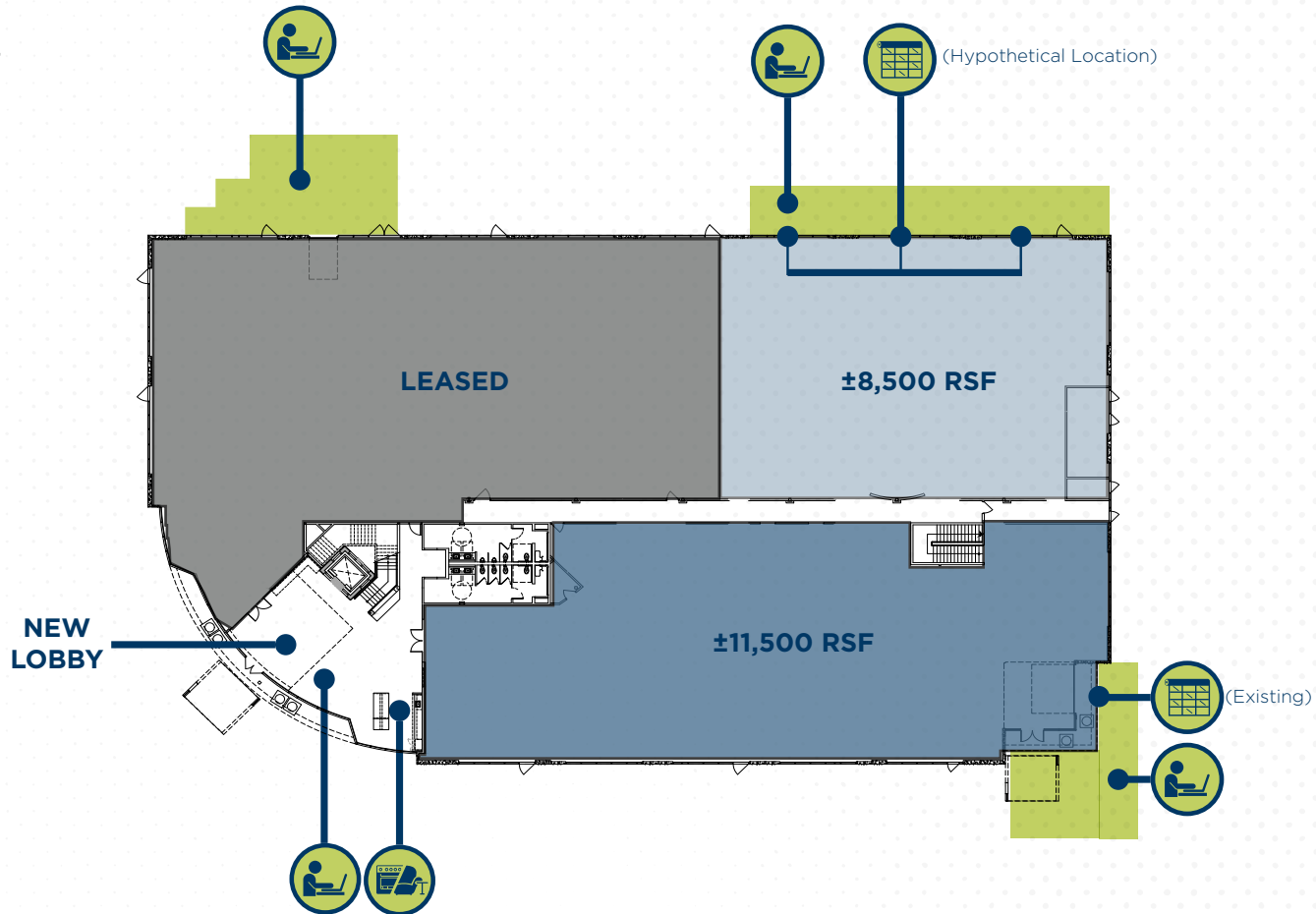


SHARED KITCHEN/LOUNGE

1st Floor

20,362 SF

Divisible



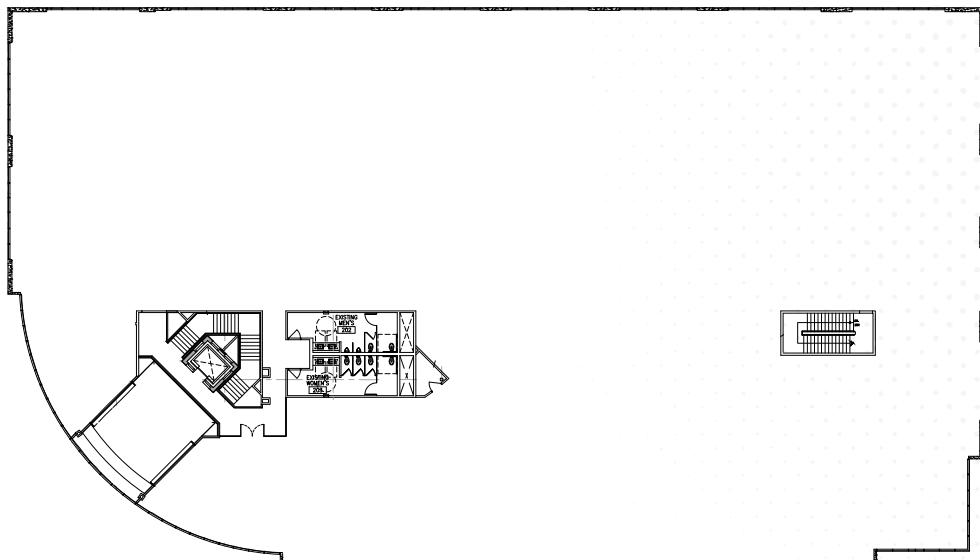
2nd Floor

33,870 SF

Divisible

Full Floor Available

Currently in shell condition

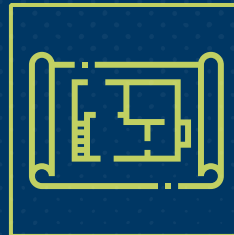


PROPERTY HIGHLIGHTS

- **Creative office suites** with direct **indoor / outdoor connectivity** providing flexible work space
- Glass roll-up doors leading to **outdoor amenities areas**
- Wi-Fi enabled common areas
- **High ceilings** - 16' clear height with exposed metal ceilings (10' drop ceiling heights)
- **11' glass window-line** around building perimeter
- **Highly visible building and monument signage** available
- Situated in center of Sorrento Mesa, San Diego's premier high tech location
- Shared kitchen/lounge area in lobby



BUILDING SIZE
67,832 SF



FLOOR PLATES
± 34,000 SF



PARKING RATIO
4:1,000 SF



SINGLE OR MULTI-TENANT
AVAILABILITY
*8,000 SF
TO 54,232 SF*



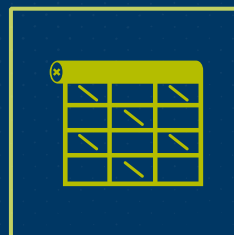
DELIVERY
3Q 2018



INDOOR/OUTDOOR
WORKSPACES



UPGRADED
*SHOWERS &
LOCKERS*



MULTIPLE GLASS
ROLL-UP DOORS



Leverage your office space to recruit and retain talent in San Diego's perfect climate by providing flexible creative office space that allows for direct indoor-to-outdoor connectivity.

RENOVATION HIGHLIGHTS

SITE PLAN



COLLABORATION
AREA



GLASS ROLL-UP DOOR



SHARED KITCHEN/LOUNGE AREA



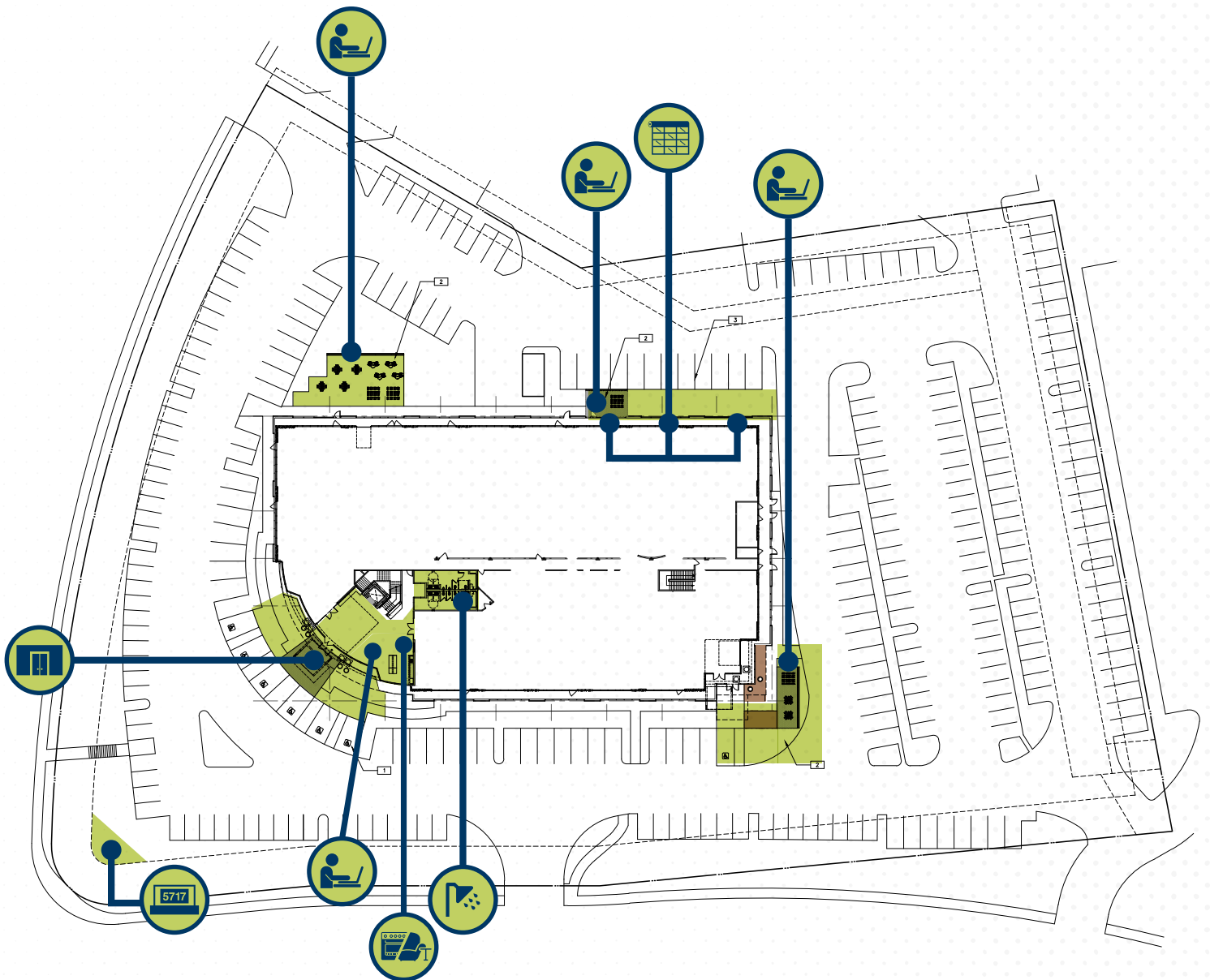
NEW MODERN RESTROOMS
WITH SHOWERS/LOCKERS



NEW ENTRY FACADE AND
LANDING



NEW HIGH VISIBILITY MONUMENT
SIGNAGE TO LUSK BLVD. AND
PACIFIC CENTER BLVD.



RENOVATION HIGHLIGHTS

- Reimagined exteriors with eye-catching architectural features
- New drought tolerant landscape and monument signage
- Multiple outdoor collaboration and work areas
- Cutting edge 2-story lobby with glass walls and contemporary design
- Upgraded restrooms with showers and lockers



RENOVATIONS TO BE ^{3Q}
COMPLETED BY **2018**

CONCEPTUAL RENDERINGS



new MODERN 2-STORY LOBBY
FEATURING GLASS CURTAIN WALLS



new GLASS ROLL-UP DOORS DIRECTLY
FROM TENANT SUITES TO OUTDOOR WORKSTATIONS

CONCEPTUAL RENDERINGS



PROMINENT BUILDING *identity*



**MULTIPLE TENANT ENTRIES *with* SIGNAGE
AND INDOOR/OUTDOOR COLLABORATION AREAS**

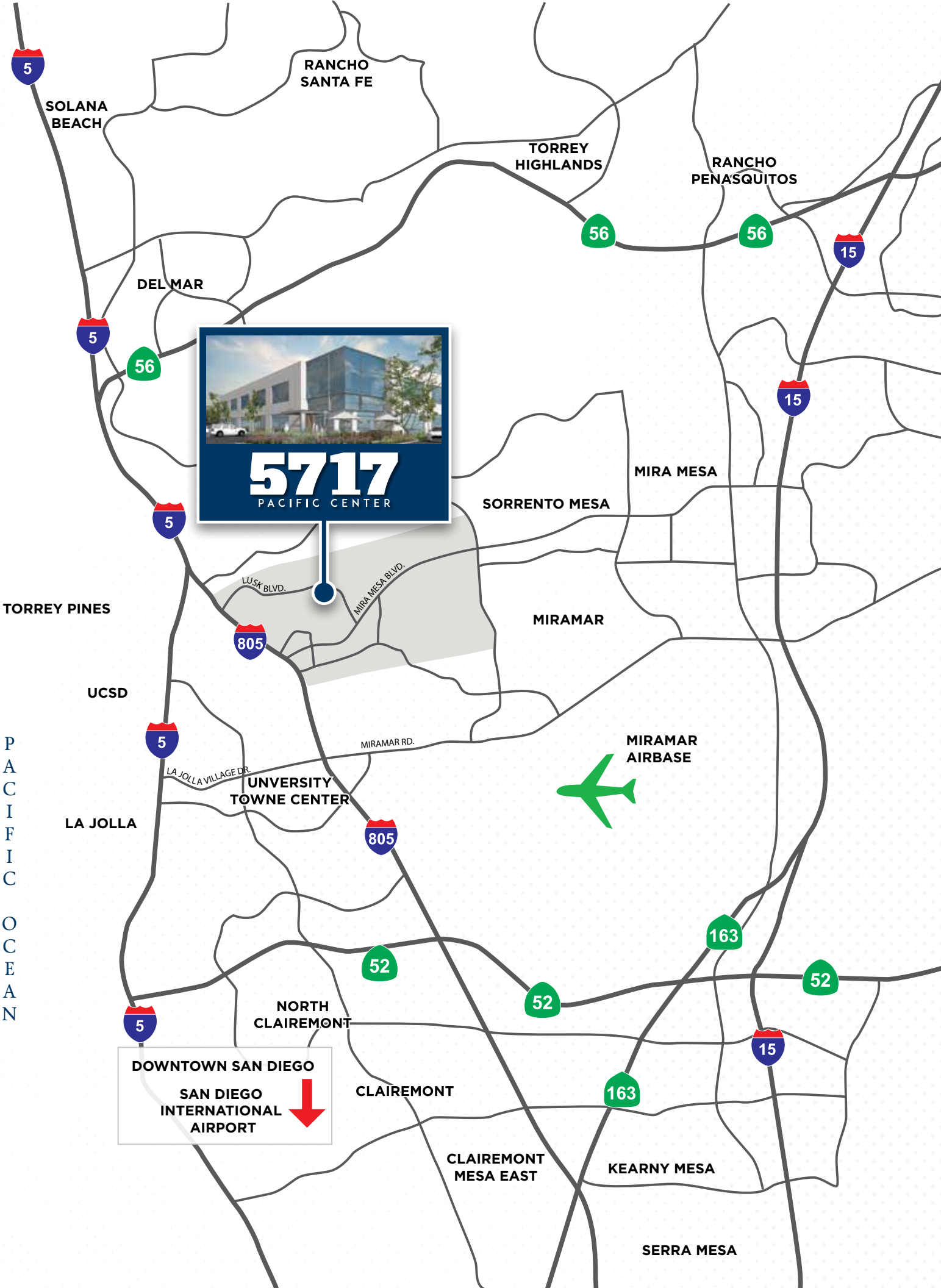
THE LOCATION



5717
PACIFIC CENTER

5717 PACIFIC CENTER BLVD. SAN DIEGO, CA 92121

**Create a statement in the heart of San Diego's
Technology and Science cluster with prominent
building signage.**



5717
PACIFIC CENTER



DOWNTOWN SAN DIEGO
SAN DIEGO INTERNATIONAL AIRPORT





5717

PACIFIC CENTER

5717 PACIFIC CENTER BLVD. SAN DIEGO, CA 92121

5717

PACIFIC CENTER



5717 PACIFIC CENTER BLVD. SAN DIEGO, CA 92121

For Leasing
Information Contact:

Bill Cavanagh

bill.cavanagh@cushwake.com

858.546.5460

Lic #00905262

Mike Novkov

mike.novkov@cushwake.com

858.546.5412

Lic #01890388



MONTANA AVENUE CAPITAL PARTNERS
Real Estate Investment Management