

# Century Plaza

1065 E HILLSDALE BLVD | FOSTER CITY



 **DIVCO WEST**



**Newmark  
Knight Frank**

**DAN MATTEUCCI**

650.358.5276  
dmatteucci@ngkf.com  
CA RE License #01848064

**MARK COURSON**

650.358.5272  
mtcourson@ngkf.com  
CA RE License #01704280

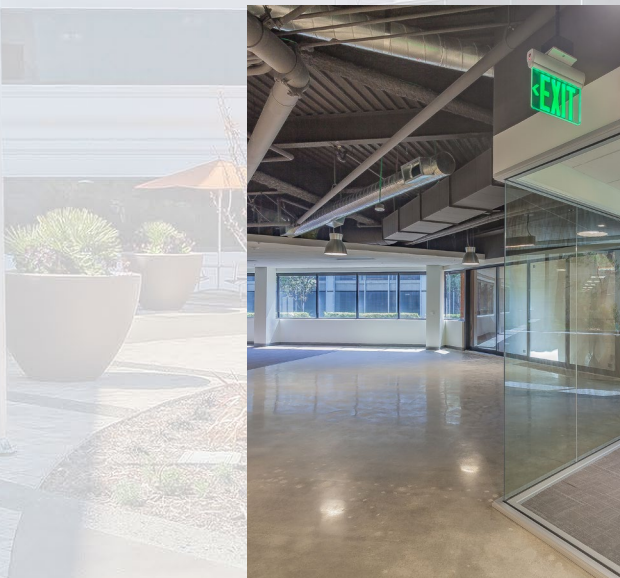
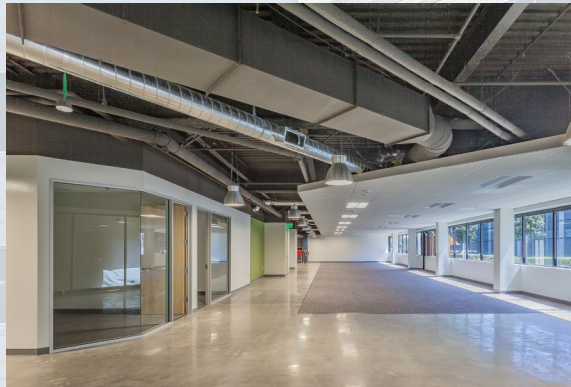
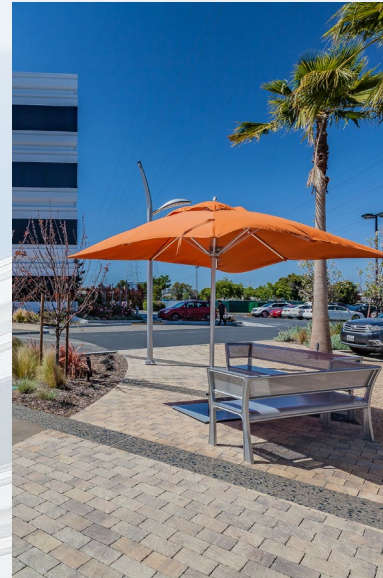
**JOSH ROWELL**

650.358.5261  
jrowell@ngkf.com  
CA RE License #01236434

# PROJECT HIGHLIGHTS

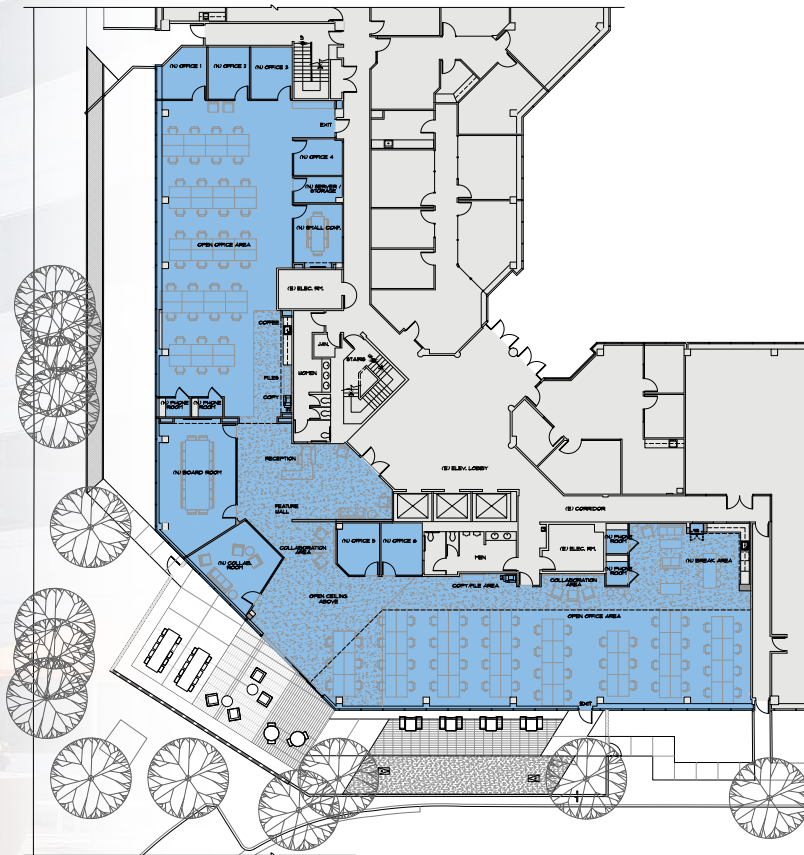
±1,508 - ±9,751  
Square Foot Spaces Available

- ◆ Recently Renovated Class A Office Building
- ◆ On-Site Management, Maintenance and Janitorial
- ◆ 3/1000 Parking Ratio
- ◆ Multiple Amenities Within Walking Distance
- ◆ Updated Lobby and Signage
- ◆ New Paint and Lighting in Common Area Corridors
- ◆ Brand New First Floor Spec Suite
- ◆ Updates to Exterior Plaza and Building Entry
- ◆ New Landscaping and Outdoor Seating

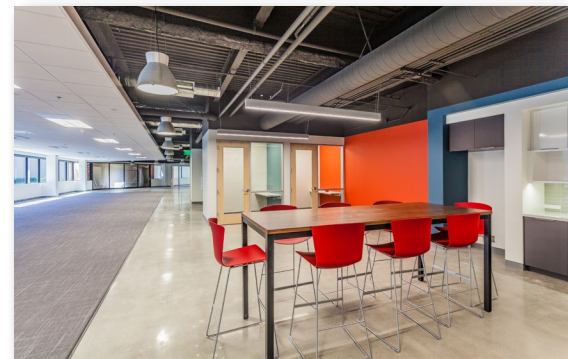
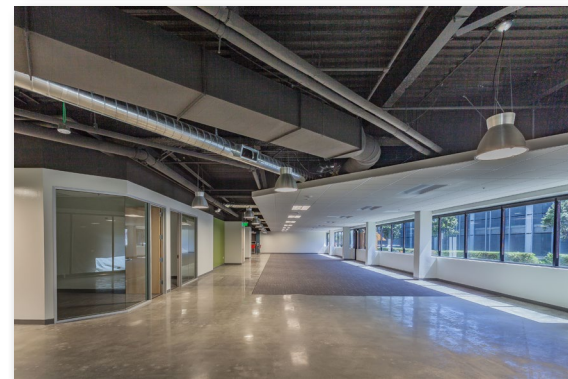
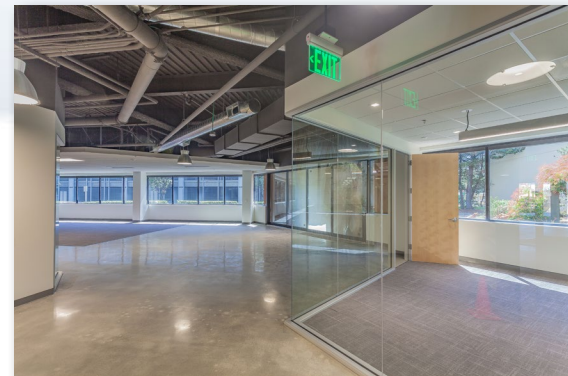


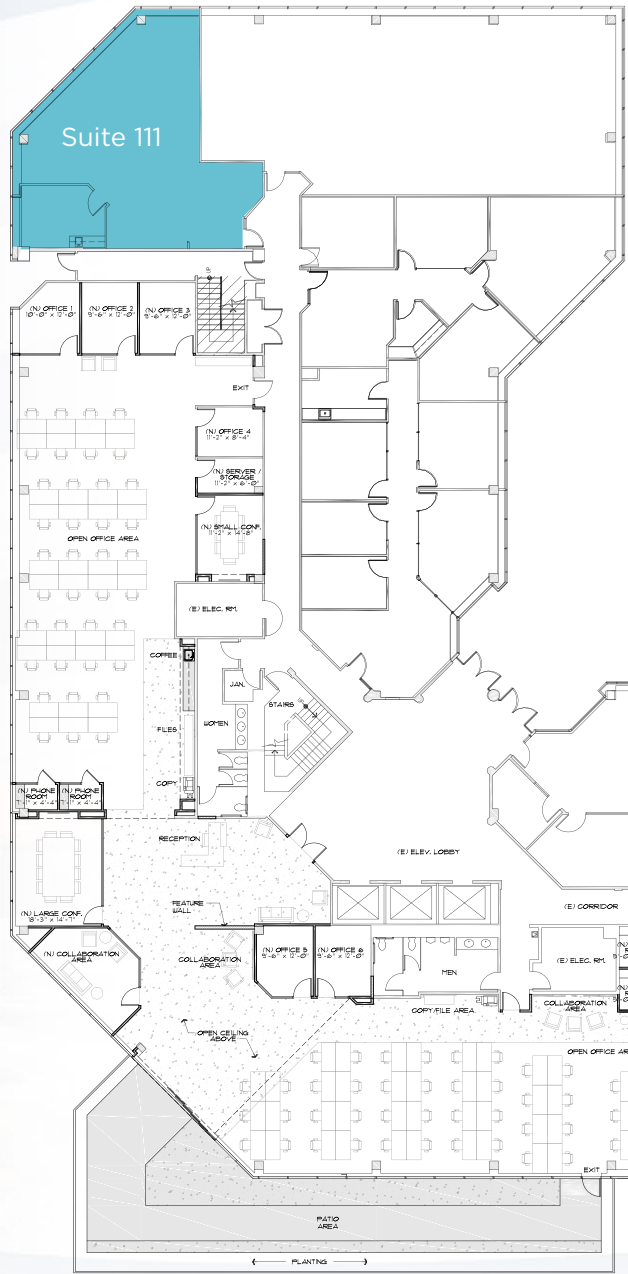
# Newly Renovated 1ST FLOOR SPEC SUITE

Suite 100: ±9,751 Square Feet Available



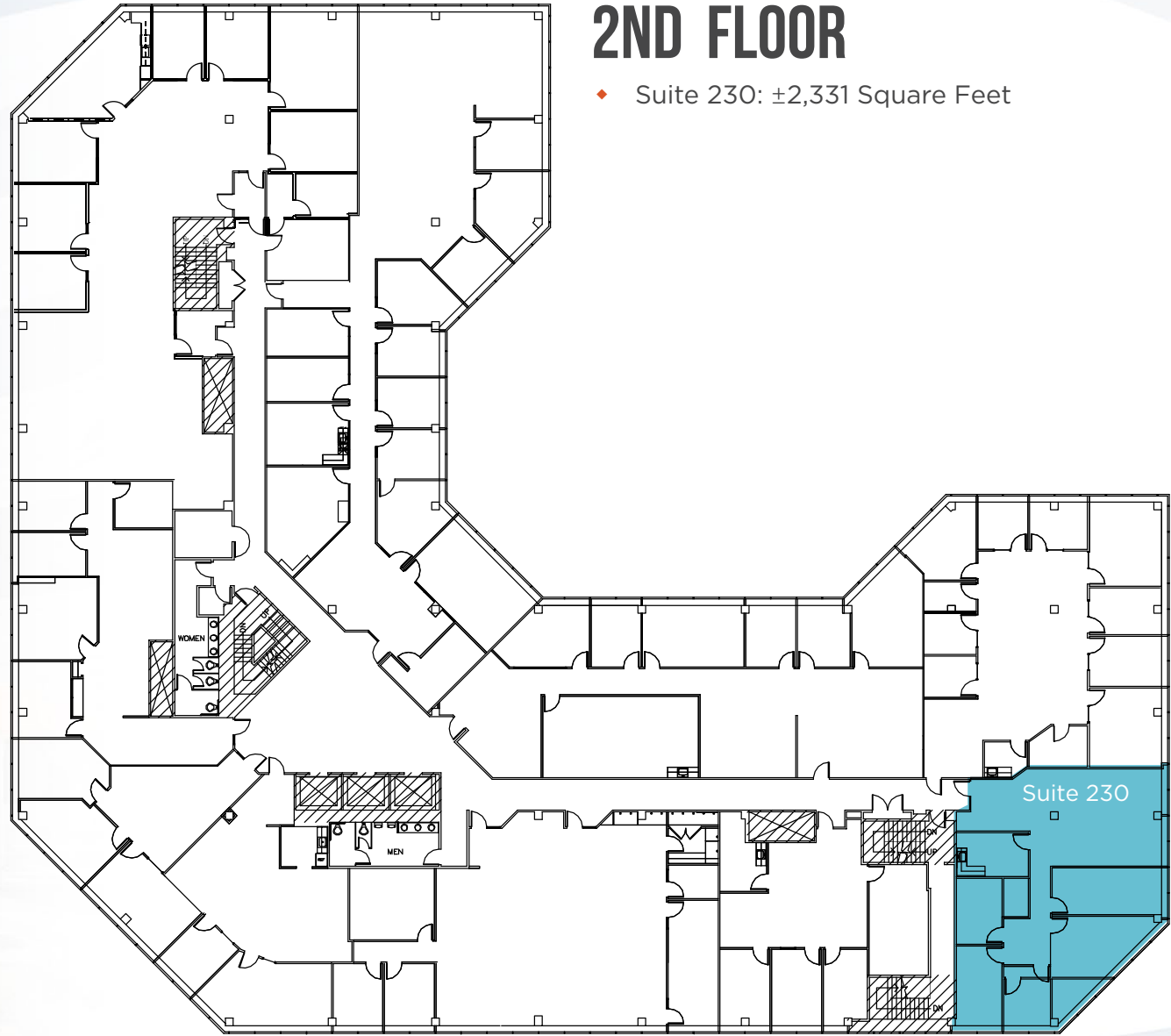
- ◆ Exclusive ±2,000 Square Foot Patio
- ◆ Floor to ceiling glass throughout
- ◆ Exposed ceiling
- ◆ Polished concrete





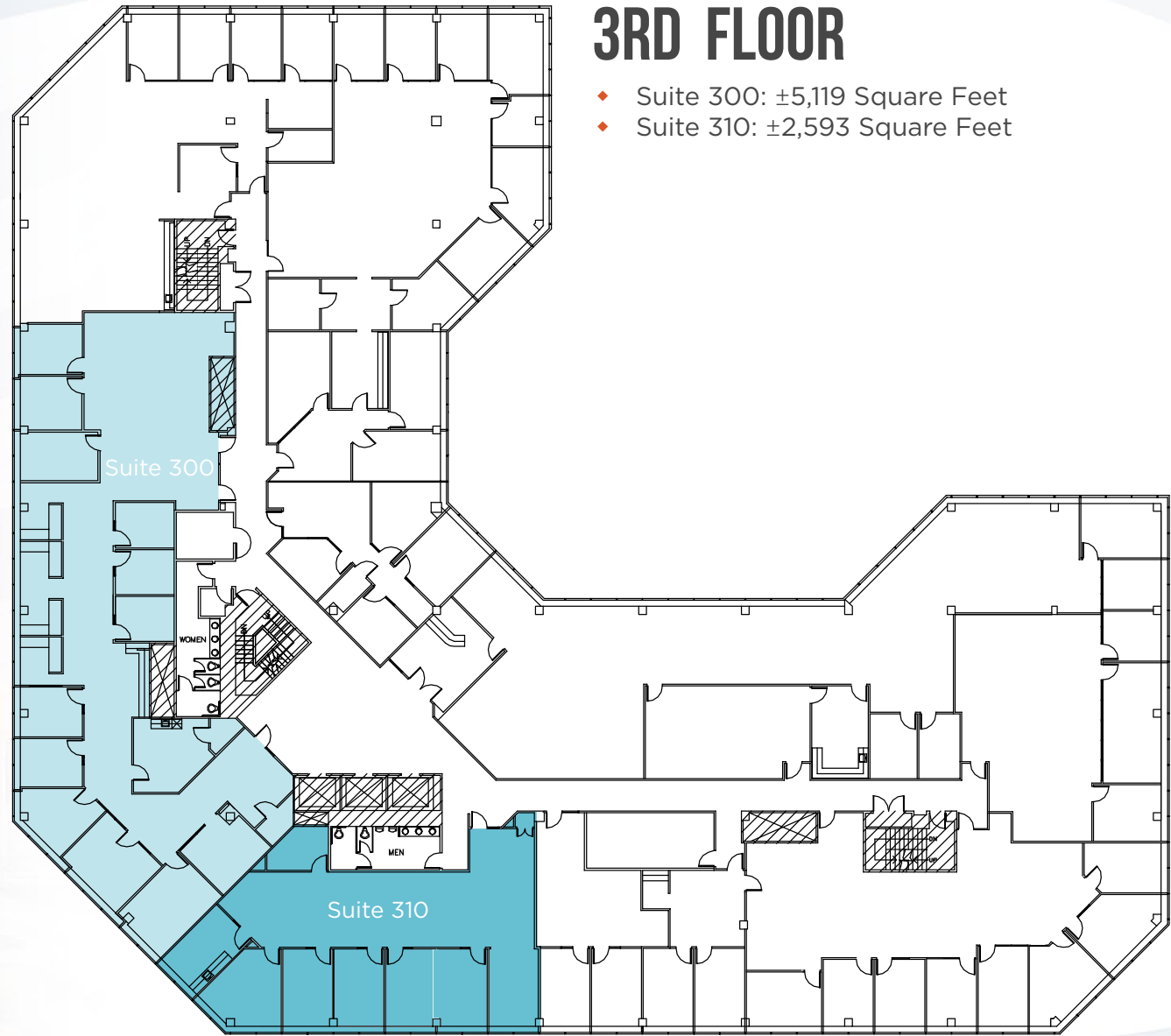
# 1ST FLOOR

◆ Suite 111: ±1,508 Square Feet



## 2ND FLOOR

◆ Suite 230: ±2,331 Square Feet



## 3RD FLOOR

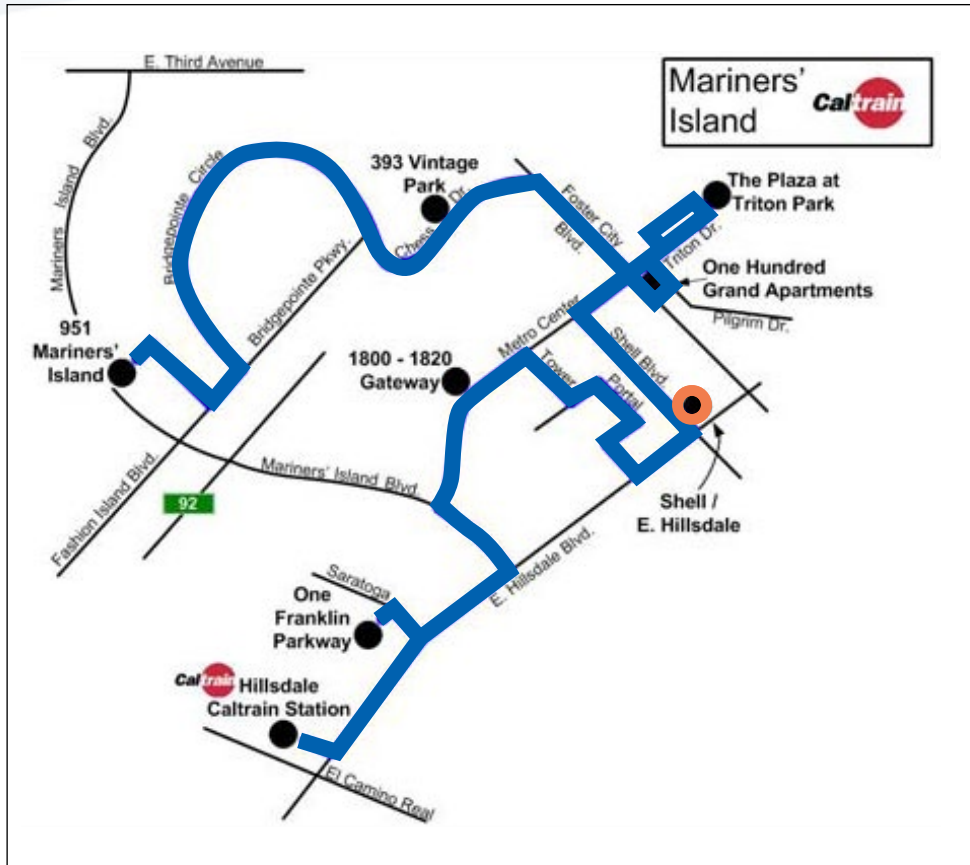
- ◆ Suite 300: ±5,119 Square Feet
- ◆ Suite 310: ±2,593 Square Feet



## 4TH FLOOR

◆ Suite 400: ±2,498 Square Feet

# CALTRAIN SHUTTLE SCHEDULE



## am

Northbound Caltrain No.	207	215	323	231	233
Arrives Hillsdale Station	6:54	7:34	8:23	9:09	9:31
Southbound Caltrain No.	208	216	324	232	134
Arrives Hillsdale Station	6:54	7:35	8:24	9:13	9:39

### AM SHUTTLE

Departs Hillsdale Station	7:00	7:43	8:29	9:18	10:01
Shell/E. Hillsdale	7:18	8:01	8:47	9:36	10:19

## pm

### PM SHUTTLE

Shell/E. Hillsdale	3:29	4:13	4:57	5:40	6:24
Arrives Hillsdale Station	3:57	4:41	5:25	6:08	6:52

Northbound Caltrain No.	159	263	273	277	287
-------------------------	-----	-----	-----	-----	-----

Departs Hillsdale Station	4:08	4:51	5:47	6:14	7:16
---------------------------	------	------	------	------	------

Southbound Caltrain No.	258	262	370	274	284
-------------------------	-----	-----	-----	-----	-----

Departs Hillsdale Station	4:04	4:50	5:43	6:15	7:15
---------------------------	------	------	------	------	------



**DAN MATTEUCCI**

650.358.5276  
dmatteucci@ngkf.com  
CA RE License #01848064

**MARK COURSON**

650.358.5272  
mtcourson@ngkf.com  
CA RE License #01704280

**JOSH ROWELL**

650.358.5261  
jrowell@ngkf.com  
CA RE License #01236434

The distributor of this communication is performing acts for which a real estate license is required. The information contained herein has been obtained from sources deemed reliable but has not been verified and no guarantee, warranty or representation, either express or implied, is made with respect to such information. Terms of sale or lease and availability are subject to change or withdrawal without notice.

05-1443.02/19

 **DIVCO**WEST

 **Newmark  
Knight Frank**

