

FOR LEASE

Professional Office Space



21 Timberoak Court, Lynchburg, VA 24502
1,500 ± Sq. Ft.

Property Information

SF

1,500 ±

Price

\$950/Month

Features

- 35+ Marked Spaces
- Customizable floorplan and finishes
- Close to other Office and Retail Locations
- Access to Timberlake Rd.

Zoning

B-GC

Property Features

Attractive office space conveniently located just off of Timberlake Rd. near the signalized intersection of Timberlake Rd. & Enterprise Dr. Attached floorplans show the location of stud walls, which can be adjusted or removed based on the needs of the tenant. Unit is unfinished and can be customized in a variety of ways. Great parking and easy access to other retail and office locations

Ricky Read, CCIM
Cell: 434-841-3659
Main: 434-455-2285 ext. 101
ricky@realestatelynchburg.com

Luke Dykeman
Cell: 434-944-3920
Main: 434-455-2285 ext. 107
lukedykeman@realestatelynchburg.com

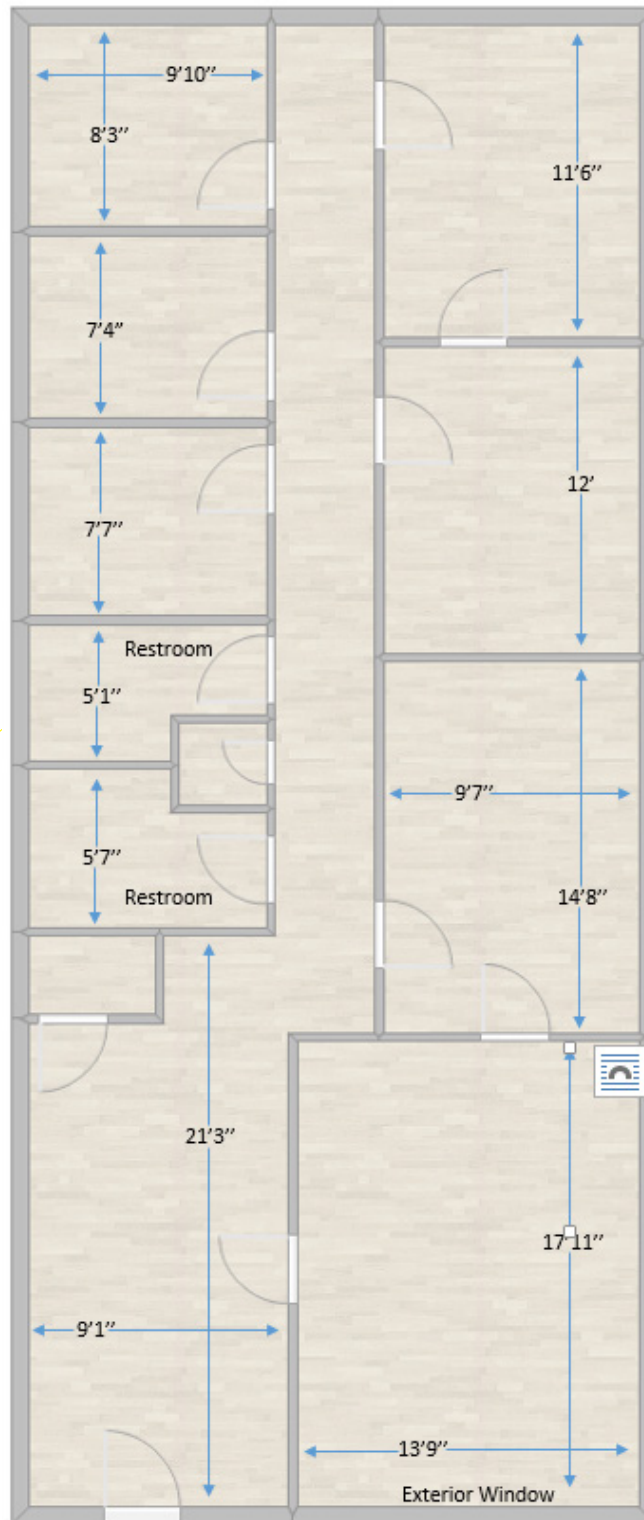
WWW.CBCREAD.COM

©2017 Coldwell Banker Real Estate LLC, dba Coldwell Banker Commercial Affiliates. All Rights Reserved. Coldwell Banker Real Estate LLC, dba Coldwell Banker Commercial Affiliates fully supports the principles of the Equal Opportunity Act. Each Office is Independently Owned and Operated. Coldwell Banker Commercial and the Coldwell Banker Commercial Logo are registered service marks owned by Coldwell Banker Real Estate LLC, dba Coldwell Banker Commercial Affiliates.

Coldwell Banker Commercial
Read & Co., Realtors
101 Annjo Court, Forest, VA 24551
434-455-2285

FOR LEASE

Professional Office Space



Walls shown on floorplan indicate the current location of studs and can be modified to suit. Doors are shown in potential locations.