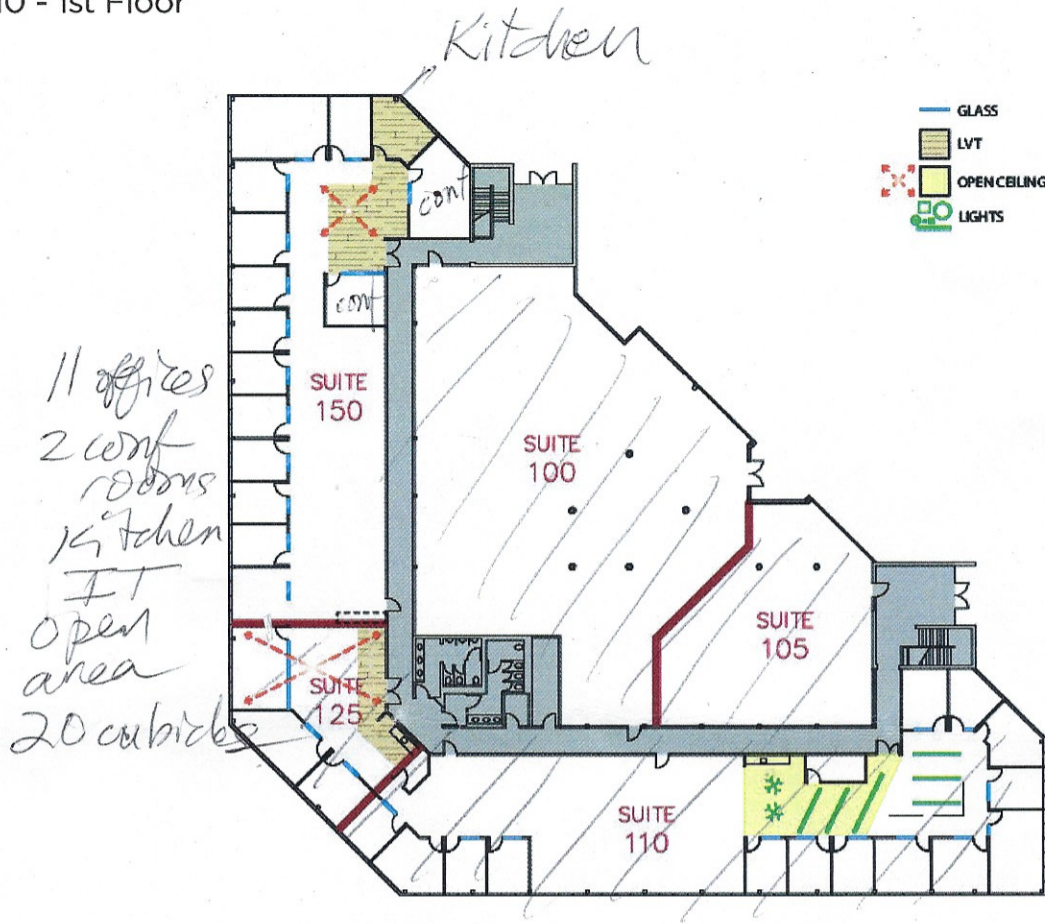


Venture Park

9 Executive Circle Irvine, CA 92614

Suite 110 - 1st Floor



SUITE	SQ FT	RATE	SUITE FEATURES	STATUS
110	6,457	\$2.75 FSG	Move-In Ready (Flex+®) Ground Floor	Available
ADDITIONAL SUITES AVAILABLE ON THIS FLOOR				
100	6,871	\$2.75 FSG	Ground Floor	Available
105	2,374	\$2.75 FSG	-	Available

For more information please contact: 111 Innovation Drive, Irvine, CA, 92617 Phone: (949) 720-2550 • officeproperties@irvinecompany.com www.irvinecompanyoffice.com
Copyright 2001-2023 The Irvine Company LLC, Lic. 02041810. All Rights Reserved. No portion of this information may be copied or published without written permission. Rates and availabilities are subject to change without prior notice. Floor plans and square footages are approximations, and should be independently verified.