

# INDUSTRIAL SPACE FOR LEASE

901 EAST LODI AVENUE, LODI, CA

## LISTING DATA

**TOTAL BLDG SIZE:** 7,000± SF  
**OFFICE SIZE:** 1,600± SF  
**LOT SIZE:** 0.79± AC  
**GL DOORS :** Two (2) - 10' x 14'  
**CLEAR HEIGHT :** 16'-18"  
**POWER :** 400 amp, 120/208 volt,  
3 phase  
**ZONING:** M (Industrial – City of Lodi)

## COMMENTS:

- Clear span concrete tilt-up construction
- Building in good condition
- Recent roof renovation
- Office includes reception/bull pen area, kitchen, two (2) private offices and restroom
- Excessed fenced & paved yard area
- Additional shop office & shop restroom
- Distributed power throughout
- Located at the corner off East Lodi Avenue and Kelly Street



## ECONOMIC DATA

**LEASE RATE:** \$0.60 PSF, Gross

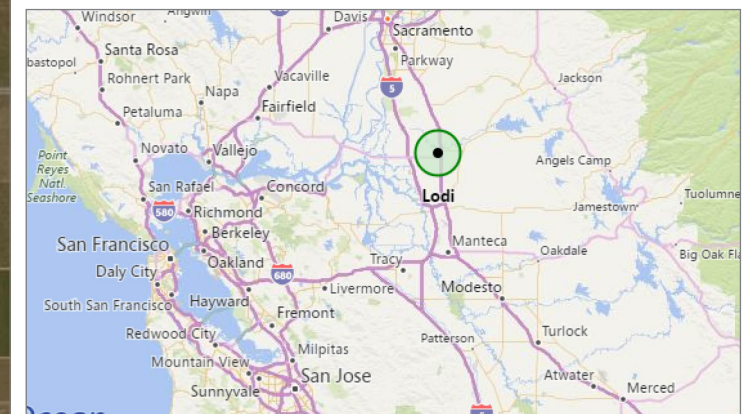
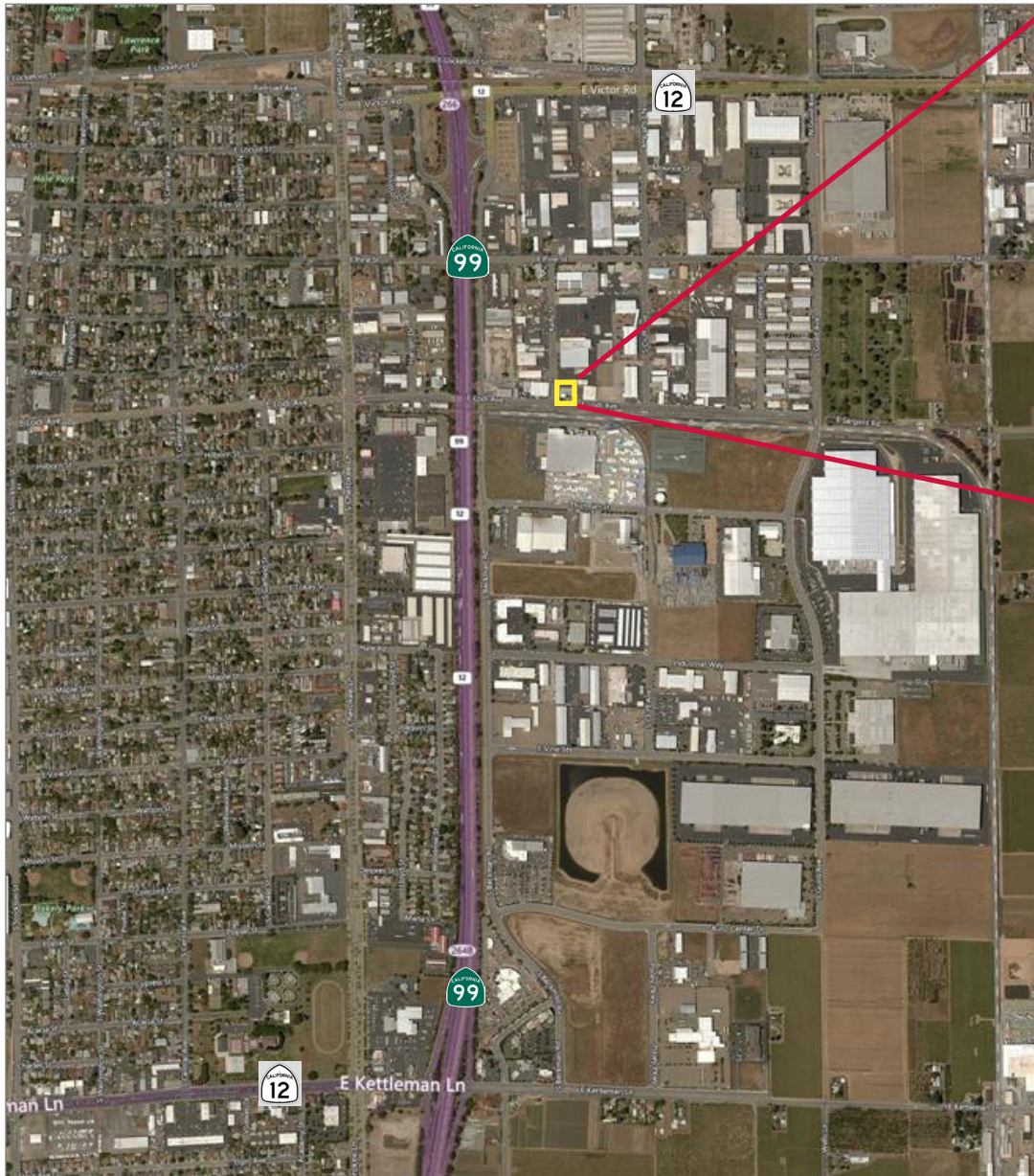
## CONTACT

Darren McFadden  
BRE #01276439  
dmcfadden@lee-associates.com  
D 209.983.6821

All information furnished regarding property for sale, rental or financing is from sources deemed reliable, but no warranty or representation is made to the accuracy thereof and same is submitted to errors, omissions, change of price, rental or other conditions prior to sale, lease or financing or withdrawal without notice. No liability of any kind is to be imposed on the broker herein.

# INDUSTRIAL SPACE FOR LEASE

901 EAST LODI AVENUE, LODI, CA



## CONTACT

Darren McFadden  
BRE #01276439  
dmcfadden@lee-associates.com  
D 209.983.6821

All information furnished regarding property for sale, rental or financing is from sources deemed reliable, but no warranty or representation is made to the accuracy thereof and same is submitted to errors, omissions, change of price, rental or other conditions prior to sale, lease or financing or withdrawal without notice. No liability of any kind is to be imposed on the broker herein.