

FOR SALE

VACANT OFFICE BUILDING

11215 N. Nebraska Ave., Tampa, FL 33612

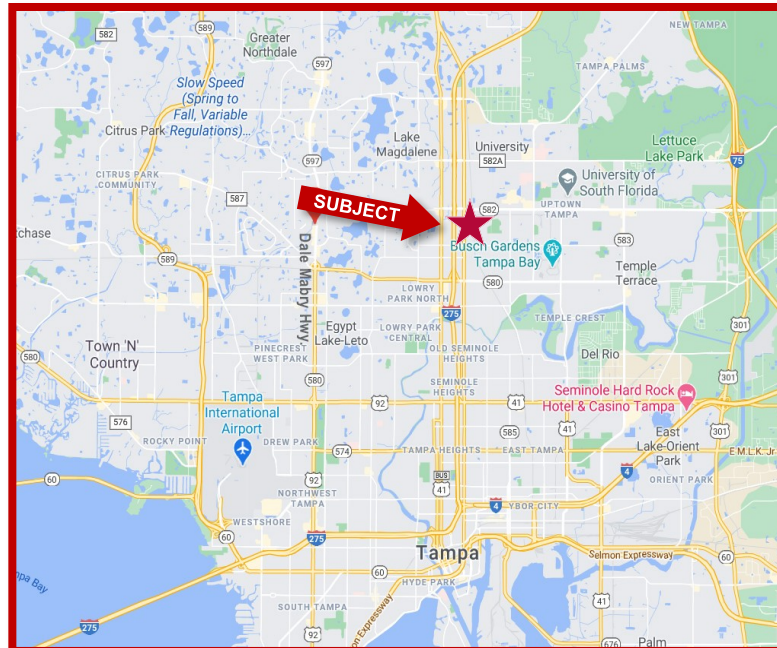
OWNER OCCUPIED OFFICE INVESTMENT OPPORTUNITY



FEATURES

- ❖ 10,500/SF - 2-story freestanding Bldg on 0.64 AC
- ❖ Double door into B4 for equipment or vehicle storage
- ❖ First floor divides into 1 to 6 units from 477 SF to 7,800SF; Second floor: 2,700 SF
- ❖ Year Built: 1981; Renovated from 2005 to 2010
- ❖ Extensive structural improvements to foundation for current owner/engineers use
- ❖ Zoning: CI Tampa
- ❖ Located in Opportunity Zone with tax benefits
- ❖ Great location, one block to Fowler Ave and I-275, near USF and hospitals. Can be improved for medical uses
- ❖ Parcel ID #: A-18-28-19-840-000000-00002.0
Lot 2 - Fountain Plaza Subdivision
- ❖ 2021 RE Taxes: \$10,234.00
- ❖ **Asking price: \$ 1,550,000.00**

LOCATION MAP



FOR SALE

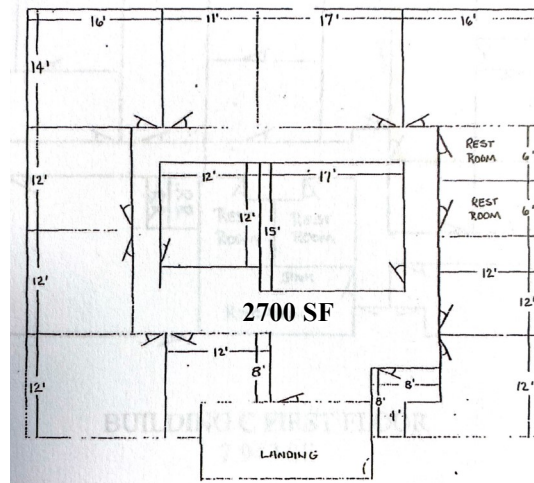
Vacant Office Building

11215 N. Nebraska Ave., Tampa, FL 33612

2nd Floor

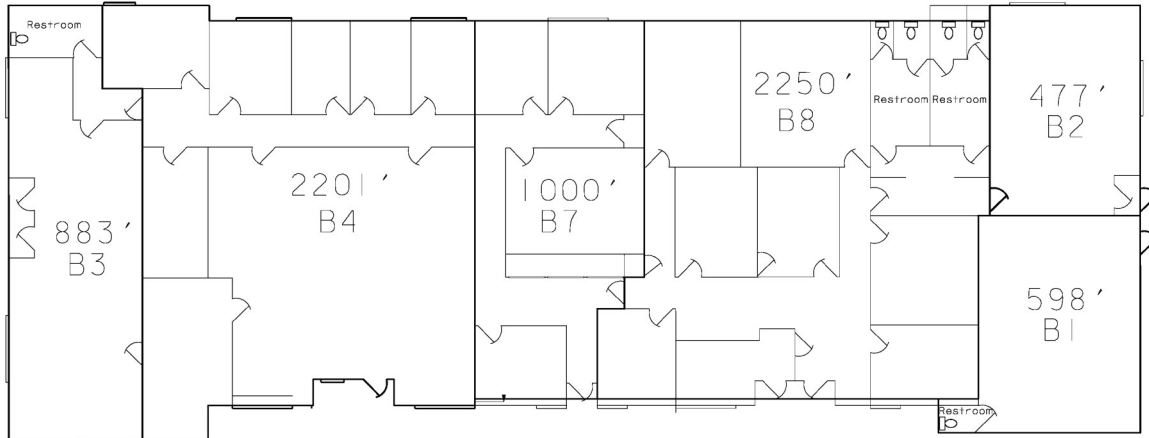


2nd Floor—Office



2nd Floor—Office

1st Floor



2nd Floor—Breakroom



2nd Floor—Conference Room



1st Floor—B1



1st Floor—B2



1st Floor—B3



1st Floor—B4

Any information given herein is obtained from sources considered reliable. However, we are not responsible for misstatement of facts, errors, omissions, prior sale, withdrawal from market, modification of mortgage commitment, terms and considerations, or change in price without notice. The information supplied herein is for informational purposes only and shall not contain a warranty or assurance that said information is correct. Any person intending to rely upon the information supplied herein should verify said information independently.