

Jewel-Osco Owned Outlot

# OUTLOT AVAILABLE

NEC Plainfield Rd. & Brainard Ave, Countryside, IL







# Outlot Available

NEC Plainfield Rd. & Brainard Ave, Countryside, IL



Location Summary

This site is strategically located at the confluence of three major roads, Plainfield Road (7,545 ADT), Brainard Ave (6,581 ADT) and 55th Street (19,928 ADT).

The property is highly visible and is accessible via several curb cuts. Join Jewel Osco, Pearle Vision and Subway.

Area retailers include TJ Maxx, Marshalls, Famous Footwear CD One Price and ATI Physical Therapy.



Site Information

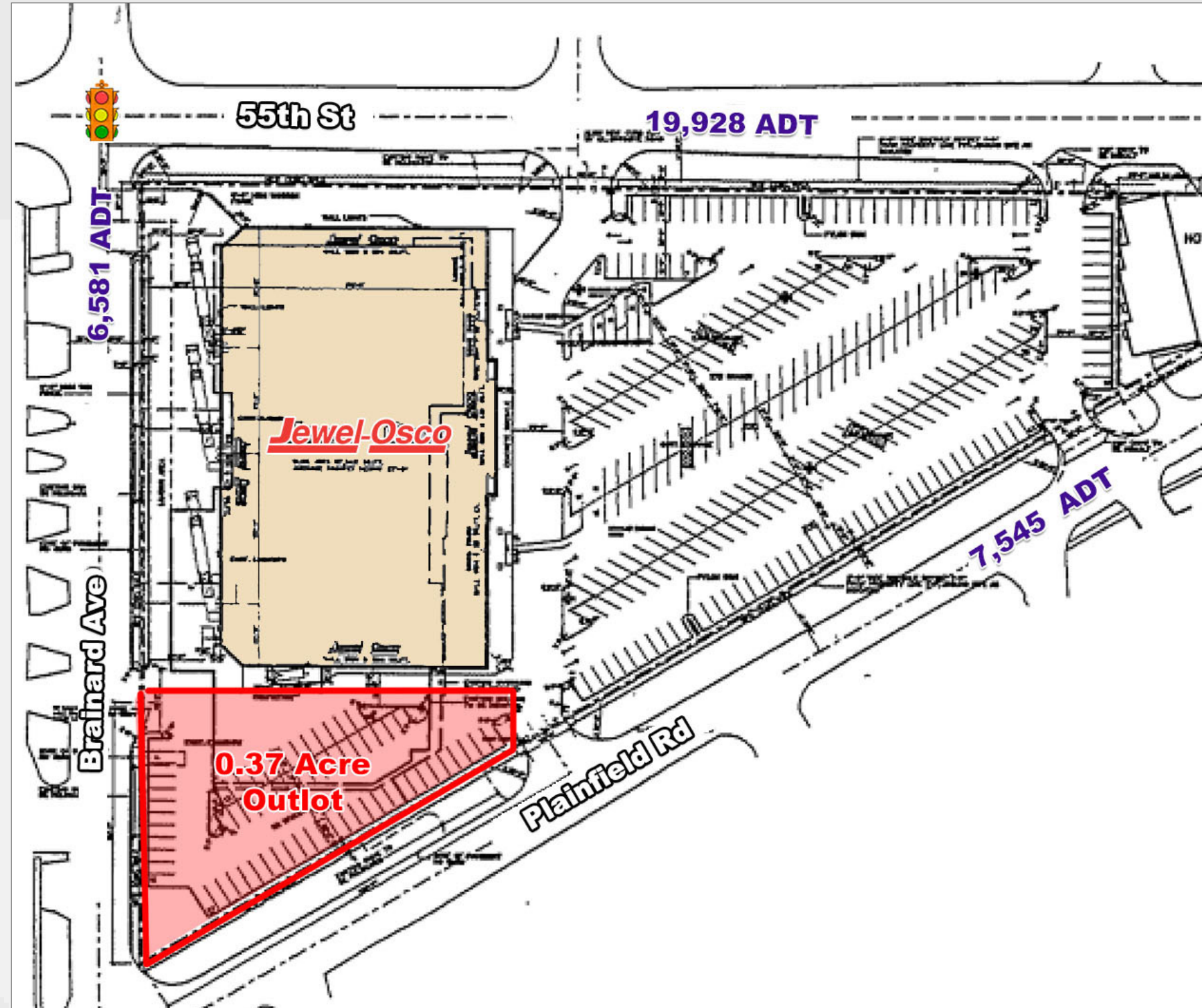
<b>Land Available</b>	Approximately 0.37 Acres	
<b>Population Density</b>	11,398	1 Mile Radius
	83,108	3 Mile Radius
	250,064	5 Mile Radius
<b>Population Base</b> <i>Avg Household Income</i>	\$100,230	1 Mile Radius
	\$126,007	3 Mile Radius
	\$103,014	5 Mile Radius



Contact

**Matt Cavanagh**  
e: matt@arcgrp.com p: (630) 908-5694

**Andy Robbins**  
e: arobbins@arcgrp.com p: (630) 908-5707







# JEWEL-OSCO OWNED PROPERTY

## Outlot Available

NEC Plainfield Rd. & Brainard Ave, Countryside, IL

