

PARKE LONG PLACE

CHANTILLY, VA 20151

NEW SPEC SUITE AVAILABLE!



14100 PARKE LONG COURT

- ▶ Suite M: 3,473 SF
\$15.00 PSF Full Service (Plus Cleaning)

14101 PARKE LONG COURT

- ▶ Suite R: 3,245 SF
\$13.50 PSF Full Service (Plus Cleaning)
- ▶ Suite W: 839 SF (**SPEC SUITE**)
\$13.50 PSF Full Service (Plus Cleaning)
- ▶ Suite Y: 838 SF
\$13.50 PSF Full Service (Plus Cleaning)

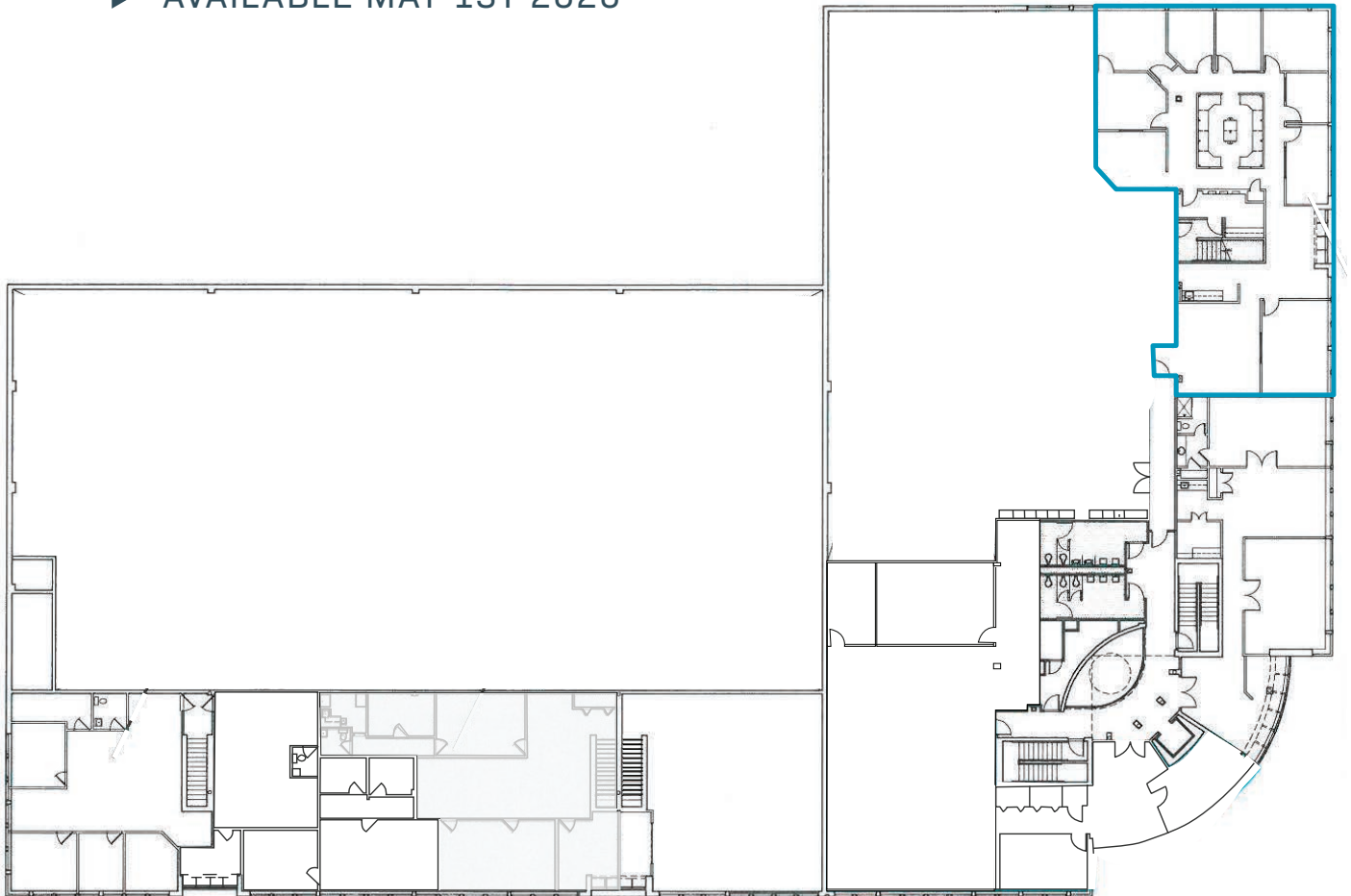
14100 PARKE LONG COURT

CHANTILLY, VA 20151

2ND FLOOR

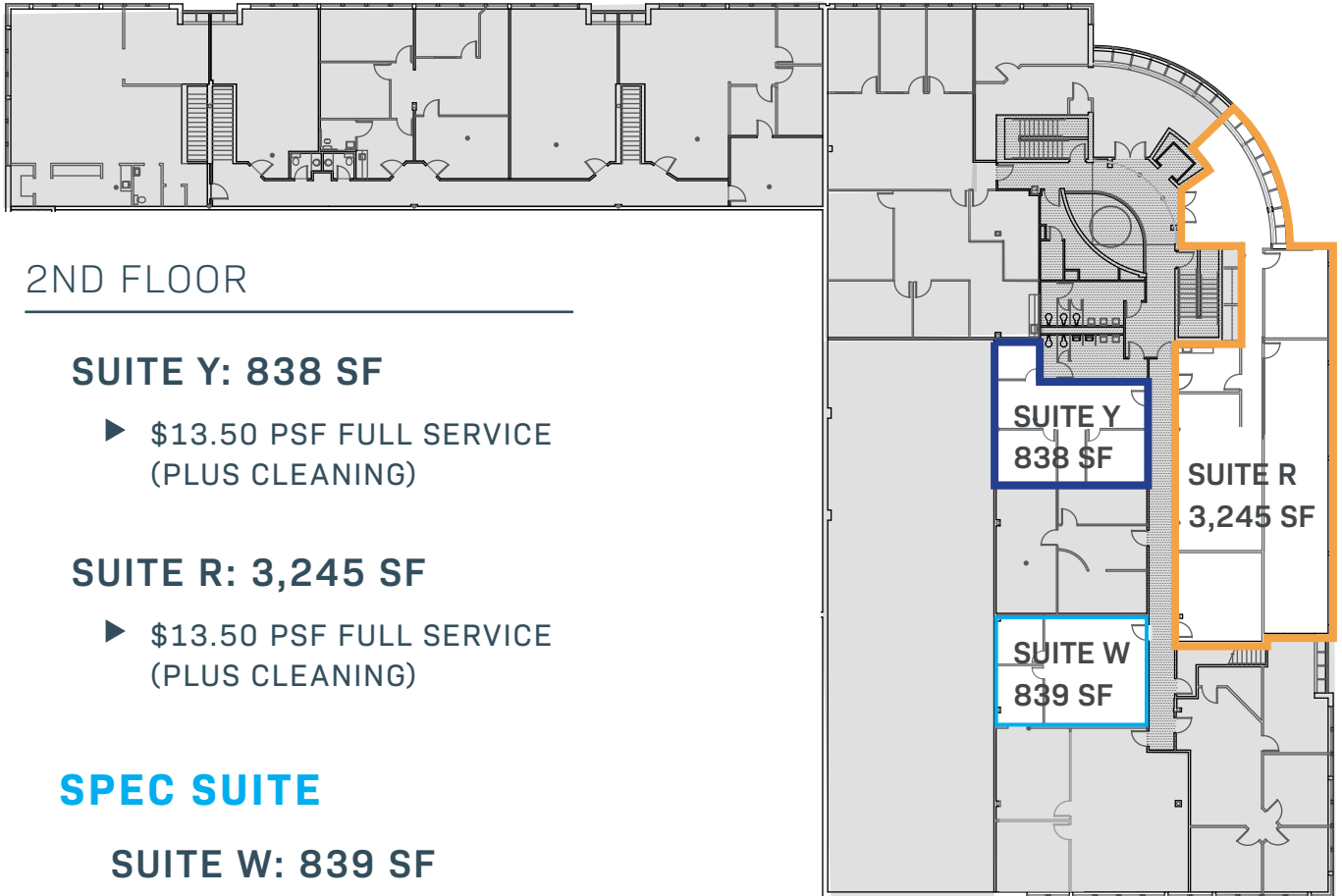
SUITE M: 3,473 SF

- ▶ \$15.00 PSF FULL SERVICE
(PLUS CLEANING)
- ▶ AVAILABLE MAY 1ST 2020



14101 PARKE LONG COURT

CHANTILLY, VA 20151



2ND FLOOR

SUITE Y: 838 SF

- ▶ \$13.50 PSF FULL SERVICE (PLUS CLEANING)

SUITE R: 3,245 SF

- ▶ \$13.50 PSF FULL SERVICE (PLUS CLEANING)

SPEC SUITE

SUITE W: 839 SF

- ▶ \$13.50 PSF FULL SERVICE (PLUS CLEANING)

SUITE Y: 838 SF

SUITE W: 839 SF

SUITE R: 3,245 SF

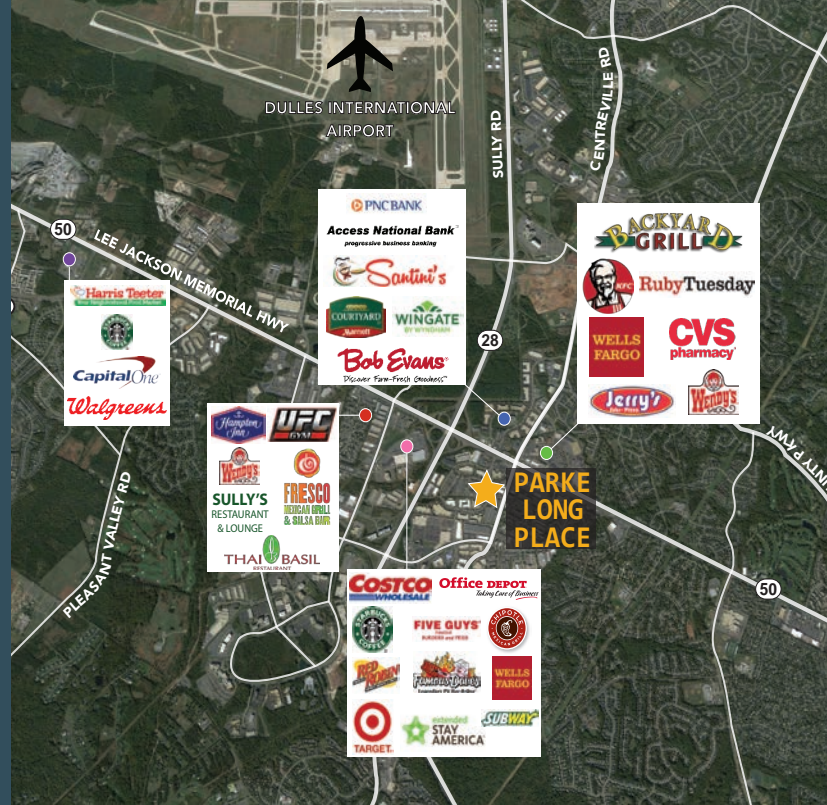
FEATURES & AMENITIES

SUPERIOR ACCESSIBILITY TO ,  & 

CLOSE PROXIMITY TO DULLES INT AIRPORT,

RESTAURANTS, HOTELS & SHOPPING

AMPLE PARKING (2 PER 1,000 SF)



FOR MORE INFORMATION
PLEASE CONTACT:

ALAN ASMAN
703.749.9464
alan.asman@
transwestern.com

BEV SHEFFLER
703.749.9453
bev.sheffler@
transwestern.com



7900 Tysons One Place, Suite 600
McLean, VA 22102
703.821.0040
www.transwestern.com