



Opportunity

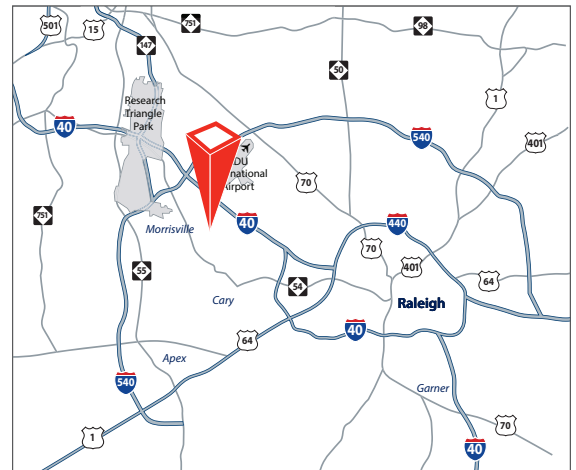
- 1,812 sf
- Building is a single-story office/flex space
- Available immediately

Rate and Term

- \$15.00/sf or \$2,265/month, Modified Gross
- Landlord pays TICAM and water; Tenant pays utilities and janitorial

Location

- Located in close proximity to Cary Parkway and Weston Parkway

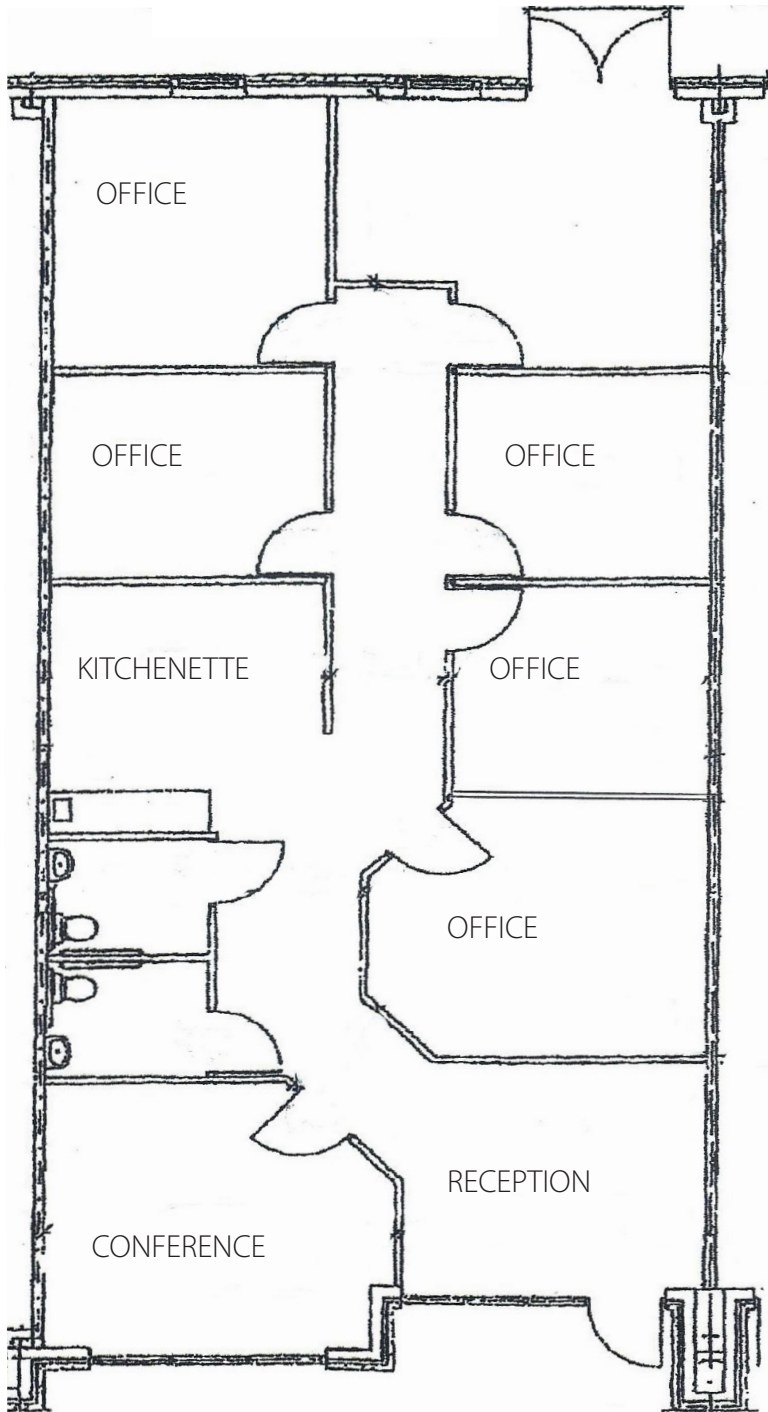


For more information, please contact:

Michael Vulpis, Senior Vice President
D 919 420 1562
T 919 785 3434
michael.vulpis@avisonyoung.com

5440 Wade Park Boulevard
Suite 200
Raleigh, NC 27607
919 785 3434

Floor Plan / 1,812 sf Available



– Features

- 100% office fitup
- 100% heated and cooled
- Easy access to Research Triangle Park and Raleigh-Durham International Airport
- Building signage available
- Two bathrooms
- Breakroom area
- Move-in condition
- New LED lights throughout
- Furniture included

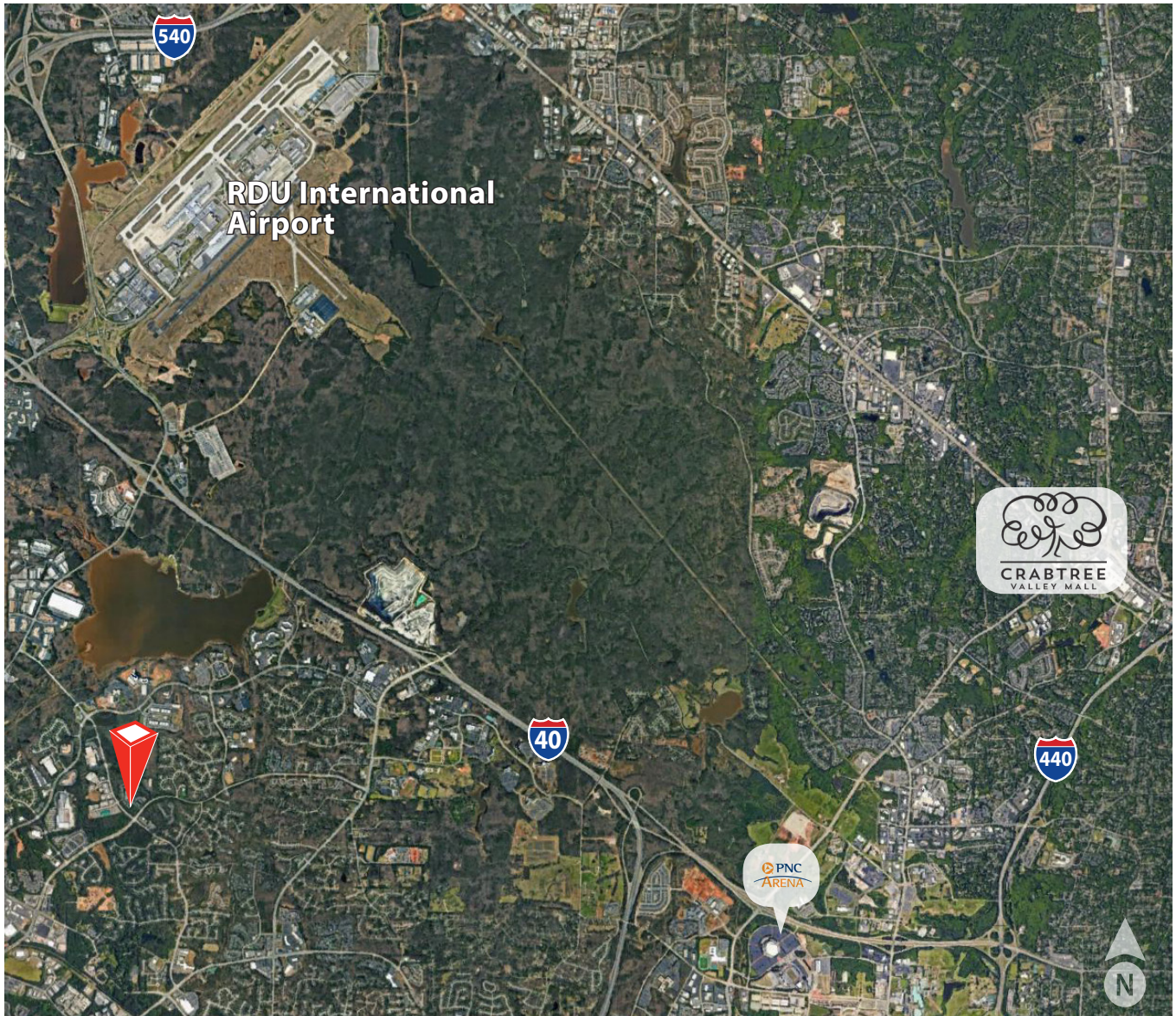


**AVISON
YOUNG**

avisonyoung.com

Michael Vulpis, Senior Vice President
D 919 420 1562
T 919 785 3434
michael.vulpis@avisonyoung.com

Location Aerial



**AVISON
YOUNG**

avisonyoung.com

Michael Vulpis, Senior Vice President
D 919 420 1562
T 919 785 3434
michael.vulpis@avisonyoung.com