

# HOLYOKE MALL CROSSING

98 LOWER WESTFIELD ROAD, HOLYOKE, MASSACHUSETTS

+/- 13,200 SF (Sub-Dividable) Ground Floor & +/- 3,000 SF of 2nd Floor Retail/Office Flex Space Available



## CONTACT INFO

SCOTT BLACK  
sblack@dartco.com  
617.369.5902

ANDREW MURMES  
amurmes@dartco.com  
617.369.5909

ANDREW JACOB  
ajacob@dartco.com  
617.262.6620

# HOLYOKE MALL CROSSING

98 LOWER WESTFIELD ROAD, HOLYOKE, MASSACHUSETTS



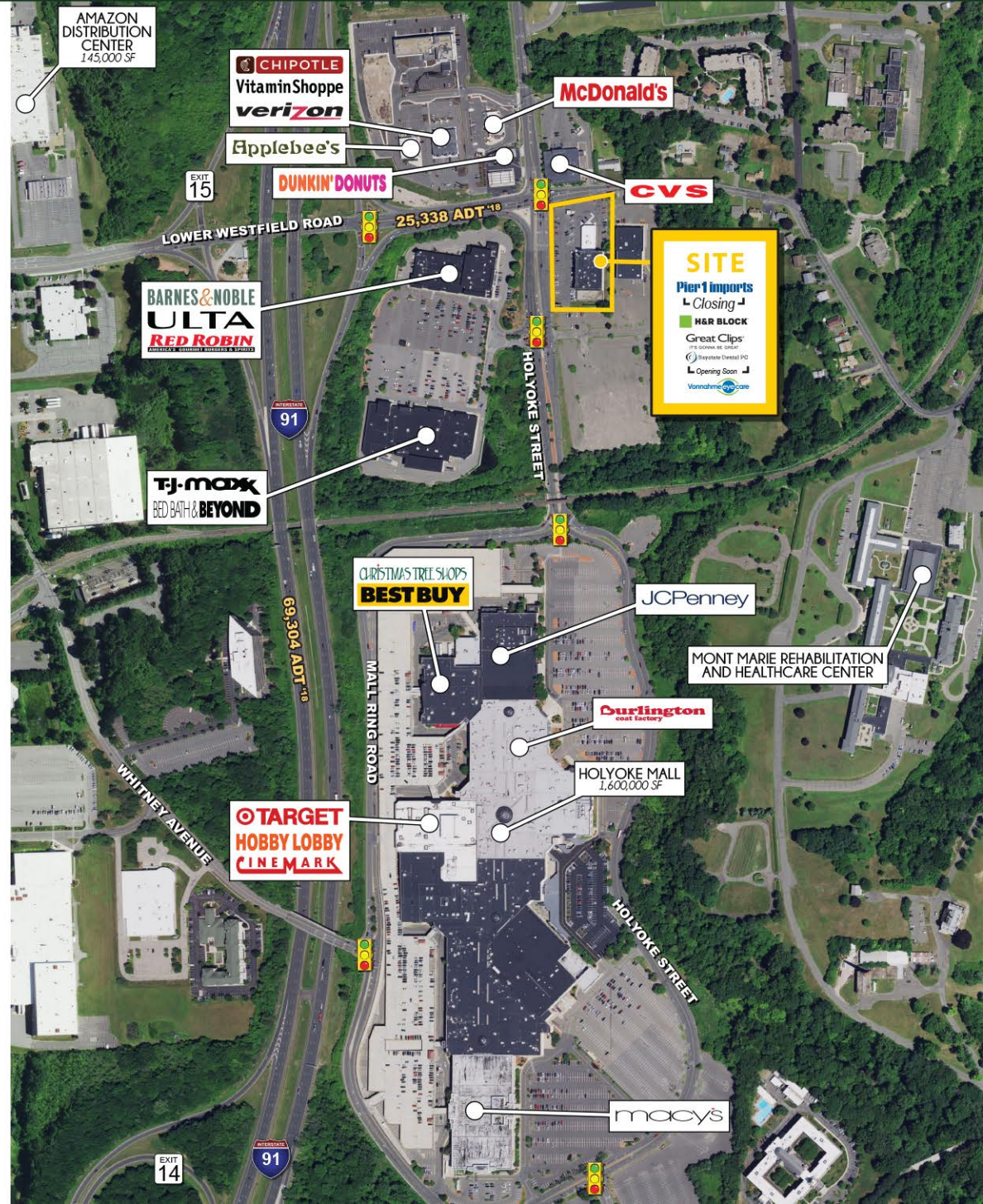
## SITE FACTS

- Located off Exit 15 on I-91 which is the first exit North of the I-90 and I-91 interchange
- Positioned at the main entrance to the regional Holyoke Mall (1,600,000 SF), which is home to Macy's, Target, Best Buy, and JC Penney
- 37,000 SF mixed-use building with +/- 13,200 SF (sub-dividable) of ground floor retail available and +/- 3,000 SF of retail/office flex space available
- +/- 200 parking spaces
- Pylon signage opportunities available
- Situated 7 miles north of the MGM Grand Springfield Casino

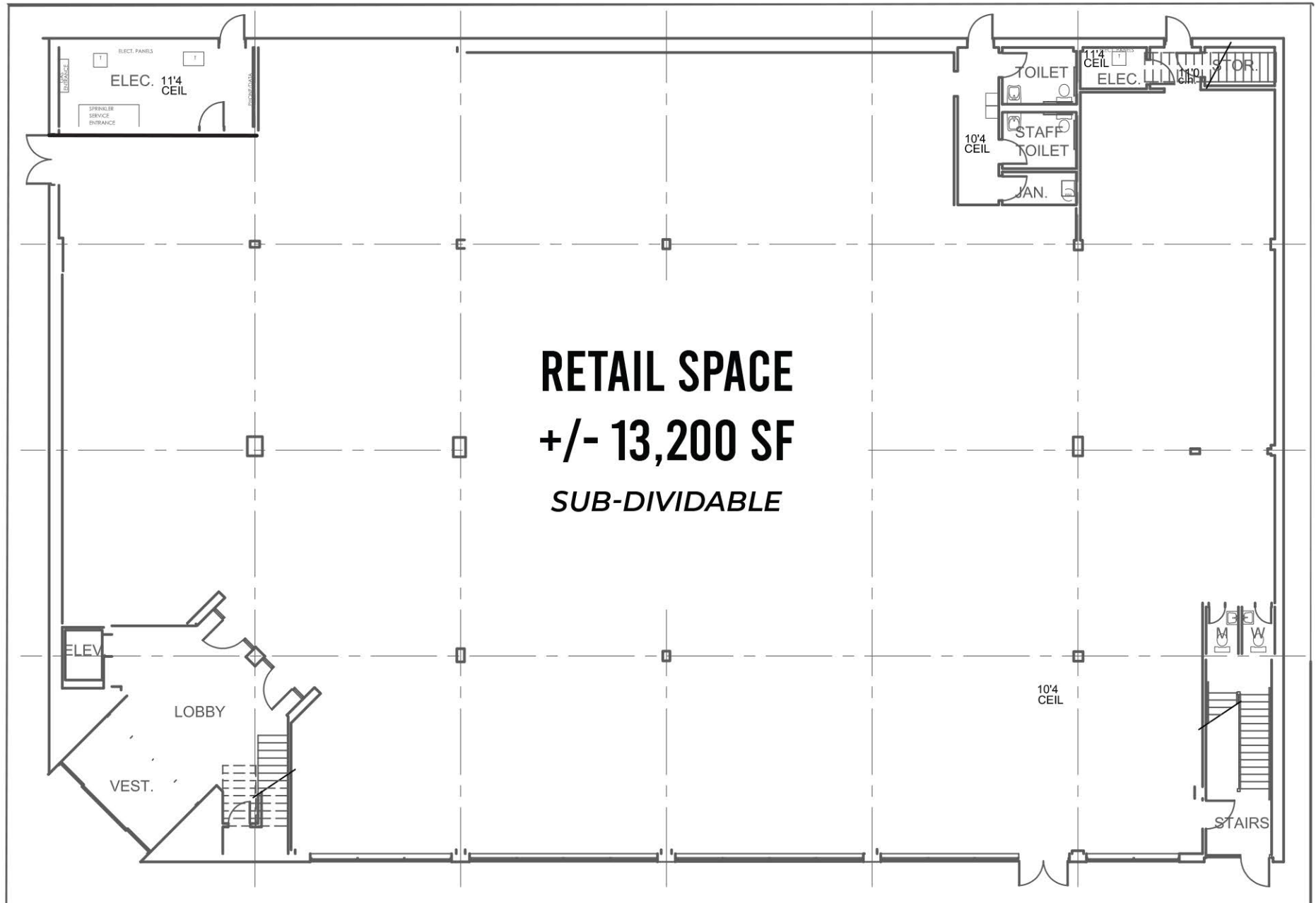
## DEMOGRAPHICS

	1 Mile	3 Mile	5 Mile
Population	5,284	64,691	167,474
Households	1,991	26,058	68,024
Median Age	42.4	37.8	38.4
Avg. HH Income	\$70,703	\$58,722	\$61,213
Total Businesses	500	3,387	8,636
Daytime Employment	9,171	43,874	103,536

## NEARBY RETAILERS



# GROUND LEVEL FLOOR PLAN



LOWER WESTFIELD ROAD

# MARKET AERIAL

## HOLYOKE, MA & WEST SPRINGFIELD, MA



### HOLYOKE

### CHICOPEE

### WEST SPRINGFIELD

### SPRINGFIELD

**Kmart**  
**Stop & Shop**  
**Ocean State JOB LOT**

AMAZON DISTRIBUTION CENTER  
145,000 SF

HOLYOKE CROSSING  
**ULTA**  
**BARNES & NOBLE**  
**PETCO**  
**TJ-MAXX**  
**BED BATH & BEYOND**

**SITE**  
Play 1 Imports  
Closing  
H&R BLOCK  
Great Clips  
Opening Soon  
Vonnahme

HOLYOKE MALL  
1,600,000 SF  
**OTARGET**  
**BEST BUY**  
CHRISTMAS TREE SHOPS  
**Curlington**  
coat factory  
**HOBBY LOBBY**  
**macy's**  
**ACMOORE**  
**OLD NAVY**  
**Apple**  
**DSW**  
**JCPenney**

MERCY HOME CARE

WINGATE AT WEST SPRINGFIELD

planet fitness

**OUTBACK STEAKHOUSE**

UPS SHIPPING CENTER

**HOOTERS**

**FIVE GUYS BURGERS AND FRIES**

**SUBWAY**

RIVERDALE SHOPS

**HOME DEPOT**  
**COSTCO**  
**Michaels**  
**STAPLES**  
**DICK'S**

**KOHL'S**  
**Stop & Shop**

**Stop & Shop**

**BJ'S WHOLESALE CLUB**

**BJ'S**

**HOME DEPOT**  
**STAPLES**  
**Marshalls**  
**Walmart\***

**savers**  
**Kmart**  
**Stop & Shop**  
**Ocean State JOB LOT**

# SECOND LEVEL FLOOR PLAN

