



2055 SANYO AVENUE, SAN DIEGO, CA
Office suites from 5,000 - 17,439 s.f.
Available for lease

- Rental rate: \$1.50 NNN
- 4/1,000 s.f. parking
- Highly visible from SR-905 and SR-11 freeways
- Excellent location: 1/4 mile to Otay Mesa Port of Entry with direct access to SR-905 and SR-11
- Fully fenced, secured site with onsite security
- Recent lobby and exterior renovations



Jones Lang LaSalle
Brokerage, Inc.
RE License #01856260

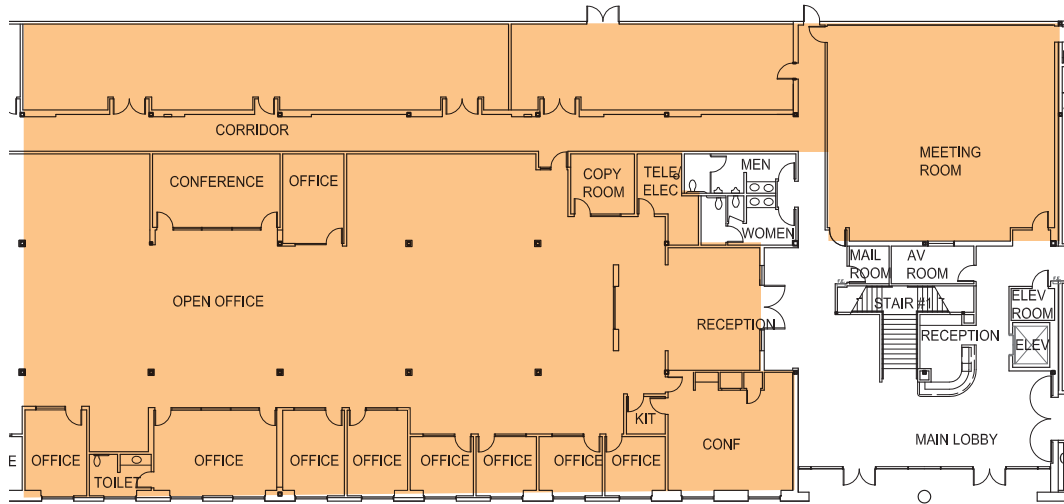
Andy Irwin
858.410.6376
andy.irwin@am.jll.com
RE License # 01302674

Joe Anderson
858.410.6360
j.anderson@am.jll.com
RE License # 01509782

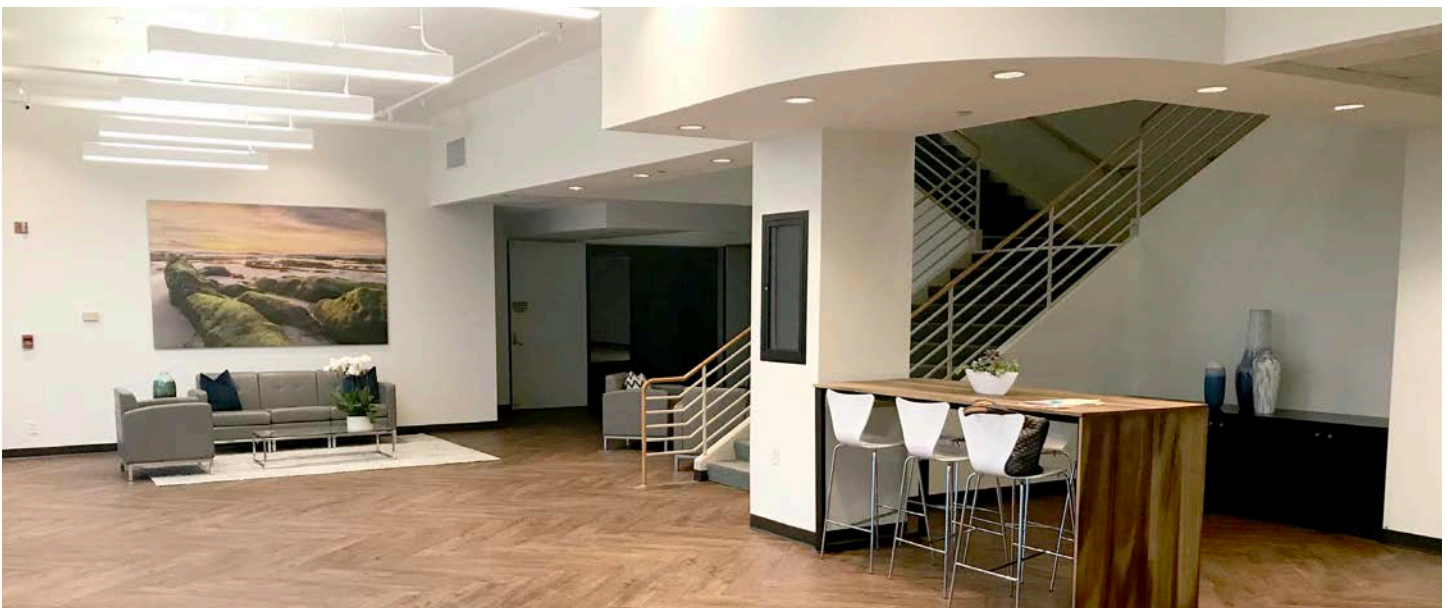
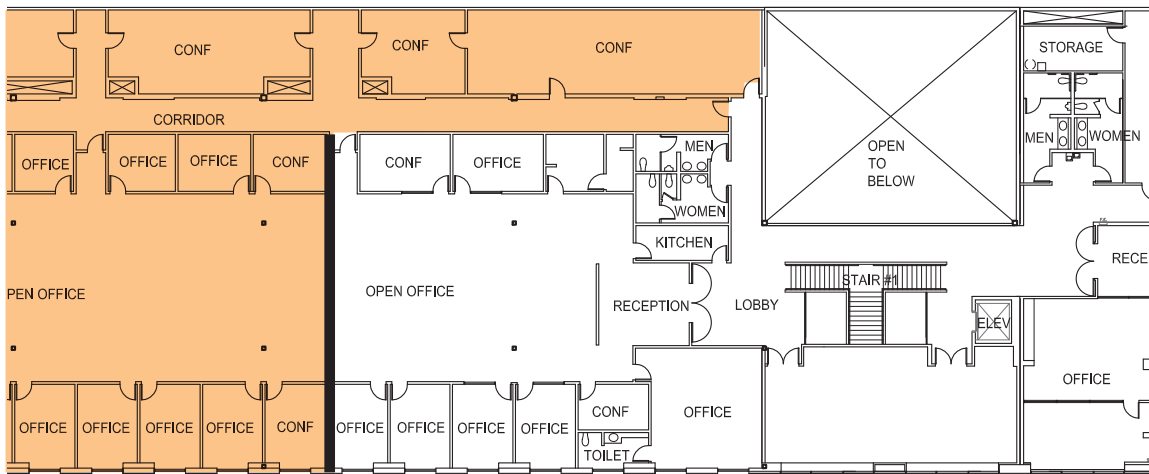
2055 Sanyo Avenue

Available Office
5,000 - 17,439 s.f.

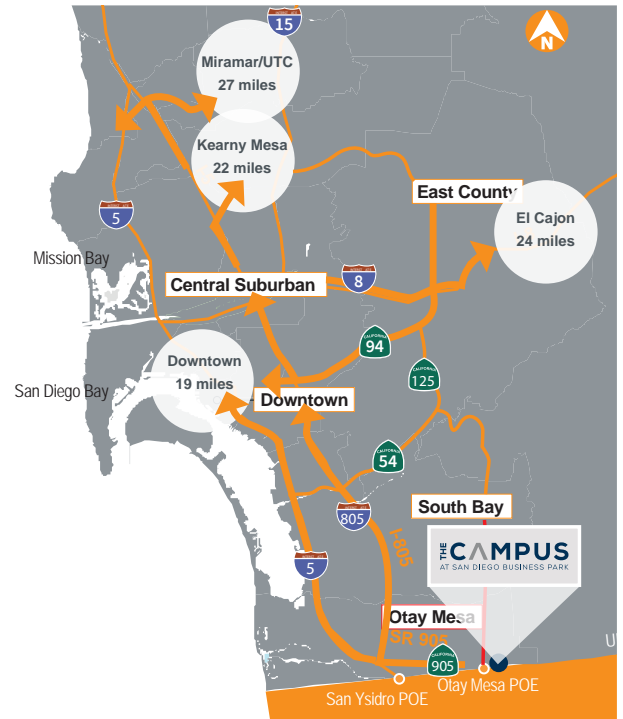
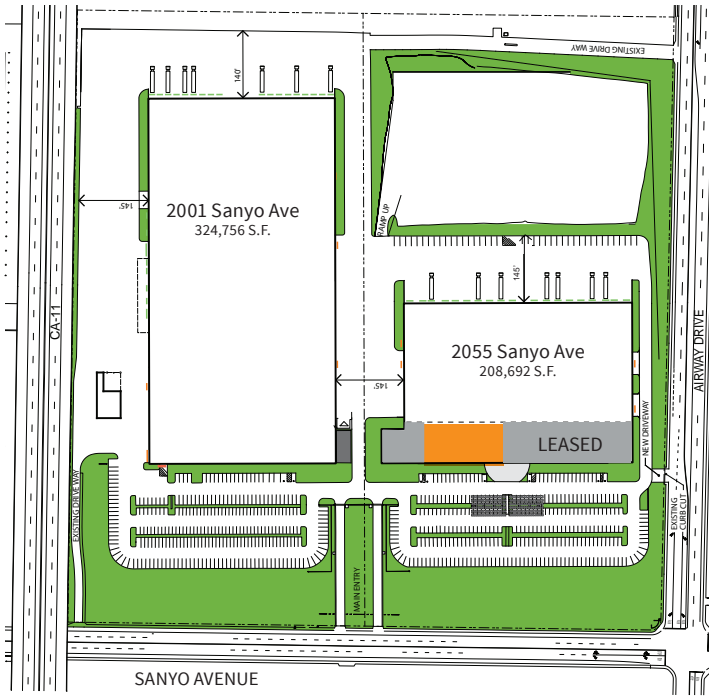
First Floor - 11,373 s.f.



Second Floor - 6,066 s.f.



The Campus Site Plan



Available
5,000 - 17,439 s.f.

Accessible location

Direct freeway access

1/4 mile from Otay Mesa Port of Entry

Reverse commute during rush hours





Murphy
Development Company

Although information has been obtained from sources deemed reliable, neither Owner nor JLL makes any guarantees, warranties or representations, express or implied, as to the completeness or accuracy as to the information contained herein. Any projections, opinions, assumptions or estimates used are for example only. There may be differences between projected and actual results, and those differences may be material. The Property may be withdrawn without notice. Neither Owner nor JLL accepts any liability for any loss or damage suffered by any party resulting from reliance on this information. If the recipient of this information has signed a confidentiality agreement regarding this matter, this information is subject to the terms of that agreement. ©2018. Jones Lang LaSalle IP, Inc. All rights reserved.



Jones Lang LaSalle
Brokerage, Inc.
RE License #01856260

Andy Irwin
858.410.6376
andy.irwin@am.jll.com
RE License # 01302674

Joe Anderson
858.410.6360
j.anderson@am.jll.com
RE License # 01509782