

Over ±1,000,000 SF of Modern Tech Space!

**Bayshore Technology Park is the San Francisco Peninsula's
Premier Life Science and Tech Office Park!**



**UNEQUALED AMENITY PACKAGE WITH
SPEC LAB SUITES AND TAILORED LAB BUILDOUTS**

For more information, please contact:

Mike Moran, SIOR
Executive Managing Director
+1 650 401 2121
mike.moran@cushwake.com
LIC #00901003

Ben Paul
Executive Managing Director
+1 650 401 2123
ben.paul@cushwake.com
LIC #01210872





- Outstanding Zoning and Building Designs Provide Optional Solution for Both Tech and Life Science
- Centralized Amenities
 - 5,708 SF Fitness Facility with Showers and Lockers
 - Business Training Center with State of the Art A/V and Technology
 - Executive Conference Room
 - Specialty's Café with Outdoor Plaza
 - Movable Feast Food Truck Program
 - Management and Engineering On-Site
- Brand New On Building Signage Opportunities
- All New Monument and Way-Finding Signage
- Private Shuttle with Direct Service to Caltrain/BART
- Growth Management Capabilities
- Abundant Parking Located Adjacent to Each Building
- Excellent Freeway Access to Highway 101 with Close Proximity to Highway 92
- Abundant Natural Light via Floor to Ceiling Glass Lines
- Newly Installed Outdoor Wi-Fi Enabled Meeting Space

For more information, please contact:

Mike Moran, SIOR
Executive Managing Director
+1 650 401 2121
mike.moran@cushwake.com
LIC #00901003

Ben Paul
Executive Managing Director
+1 650 401 2123
ben.paul@cushwake.com
LIC #01210872



For more information, please contact:

Mike Moran, SIOR
Executive Managing Director
+1 650 401 2121
mike.moran@cushwake.com
LIC #00901003

Ben Paul
Executive Managing Director
+1 650 401 2123
ben.paul@cushwake.com
LIC #01210872

1100 ISLAND DRIVE

AVAILABLE	SIZE	NOTES
SUITE 203	±6,685 SF	50% Lab and 50% Office, Delivery Q1 2020

1300 ISLAND DRIVE

AVAILABLE	SIZE	NOTES
2ND FLOOR	±26,327 SF	Floor Vacant and Ready for Customized Tenant Improvements

1200 BRIDGE PARKWAY

AVAILABLE	SIZE	NOTES
SUITE 201	±12,204 SF	9 Private Offices, 3 Conference Rooms, Break Room, Server Room, Phone Booths, Large Open Area

1400 BRIDGE PARKWAY

AVAILABLE	SIZE	NOTES
SUITE 101	±12,353 SF	8 Private Offices, 3 Conference Rooms, Break Room, Storage Room, Large Open Area, Available 7/1/2019

2000 BRIDGE PARKWAY

AVAILABLE	SIZE	NOTES
SUITE 100	±13,044 SF	CLICK HERE FOR 360° VIEW OF THE SUITE! BEST IN MARKET SPEC SUITE 6 Private Offices, 3 Conference Rooms, Café Style Kitchen and Break Room

2200 BRIDGE PARKWAY

AVAILABLE	SIZE	NOTES
SUITE 102	±5,323 SF	10 Private Offices, Conference Room, Break Room, Large Open Area
SUITE 103	±7,781 SF	5 Private Offices, 3 Conference Rooms, Break Room, 2 Phone Rooms, Large Open Area

3200 BRIDGE PARKWAY

AVAILABLE	SIZE	NOTES
SUITE 202	±17,571 SF	11 Private Offices, 2 Conference Rooms, Break Room, Large Open Areas

3800 BRIDGE PARKWAY

AVAILABLE	SIZE	NOTES
SUITE 101	±13,638 SF	New Paint and Carpet, Floor Vacant and Ready for Customized Tenant Improvements

For more information, please contact:

Mike Moran, SIOR
Executive Managing Director
+1 650 401 2121
mike.moran@cushwake.com
LIC #00901003

Ben Paul
Executive Managing Director
+1 650 401 2123
ben.paul@cushwake.com
LIC #01210872



“
Redwood City is home to some of the world’s most innovative companies.
”

Located right at the Highway 101 and 92 junction, **Bayshore Technology Park** provides easy access to commuters from San Francisco, the Peninsula, the South Bay, and the East Bay. Restaurants, retailers, hotels, and much more are readily available to Tenants in this central location. For those commuters who use public transportation, **Bayshore Technology Park** provides direct access to CalTrain Baby Bullet station via an exclusive project shuttle. Dedicated on/off ramps from Highway 101 allow quick and easy passage to and from the San Francisco Peninsula’s main freeway artery.

For more information, please contact:

Mike Moran, SIOR
Executive Managing Director
+1 650 401 2121
mike.moran@cushwake.com
LIC #00901003

Ben Paul
Executive Managing Director
+1 650 401 2123
ben.paul@cushwake.com
LIC #01210872

BAYSHORE

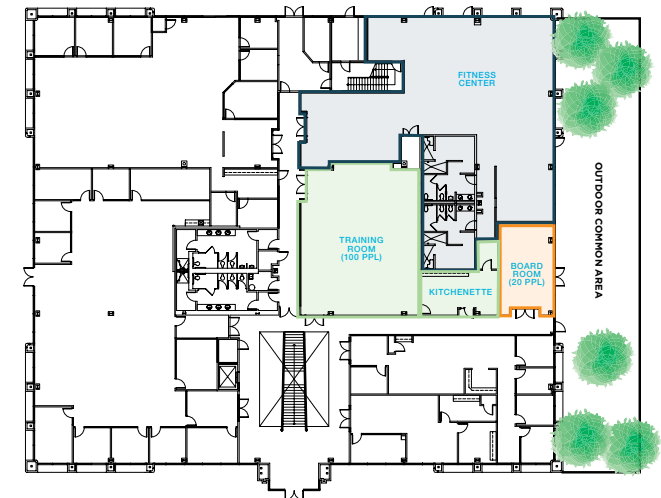
TECHNOLOGY PARK

www.bayshoretechpark.com

AMENITIES



- Dedicated Shuttle to Caltrain Baby Bullet
- ±100-person Training Center with Kitchen Services
- ±20-person Board Room
- 5,708 SF Fitness Facility with Cardio and Strength Training Equipment, Flat Screen Monitors, etc.
- Moveable Feast Food Truck Program
- Specialty's Café with Outdoor Patio
- On-site Property Management and Engineering Services
- Outdoor Recreation Areas with Basketball Court and Parkour Course
- Walking Trails & Water Views
- Newly Installed Outdoor Wi-Fi Enabled Meeting Space



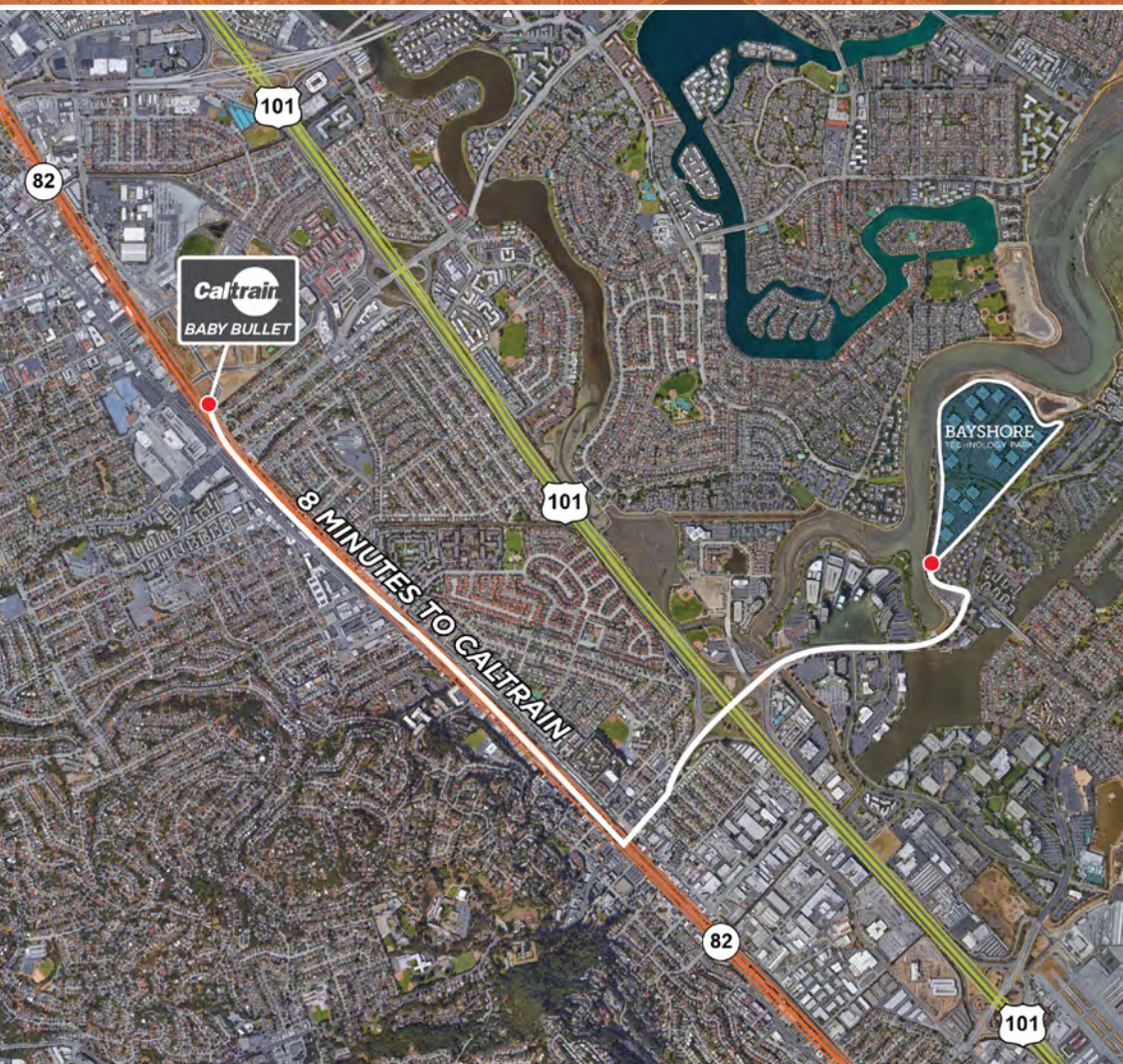
For more information, please contact:

Mike Moran, SIOR
Executive Managing Director
+1 650 401 2121
mike.moran@cushwake.com
LIC #00901003

Ben Paul
Executive Managing Director
+1 650 401 2123
ben.paul@cushwake.com
LIC #01210872



8 MINUTE DEDICATED SHUTTLE TO CALTRAIN



Bayshore Technology Park is proud to offer its Tenants a dedicated project shuttle for convenient and fast access to CalTrain. The shuttle will run every weekday during peak commute hours, stopping at CalTrain's Hillsdale Baby Bullet Station.



For more information, please contact:

Mike Moran, SIOR
Executive Managing Director
+1 650 401 2121
mike.moran@cushwake.com
LIC #00901003

Ben Paul
Executive Managing Director
+1 650 401 2123
ben.paul@cushwake.com
LIC #01210872

Bayshore Technology Park is the San Francisco Peninsula's
Premier Life Science and Tech Office Park!

Address:

BAYSHORE TECHNOLOGY PARK

900-1300 Island Drive
800-3800 Bridge Parkway
Redwood City, California 94065

Website:

www.bayshoretechpark.com

Mike Moran, SIOR

+1 650 401 2121

mike.moran@cushwake.com

Ben Paul

+1 650 401 2123

ben.paul@cushwake.com

Cushman & Wakefield - Burlingame
1350 Bayshore Highway, Suite 900
Burlingame, CA 94010

cushmanwakefield.com

For more information, please contact:

Mike Moran, SIOR

Executive Managing Director
+1 650 401 2121
mike.moran@cushwake.com
LIC #00901003

Ben Paul

Executive Managing Director
+1 650 401 2123
ben.paul@cushwake.com
LIC #01210872