



Small Bay Warehouse Spaces

350-362 NW 27th Ave
Fort Lauderdale, FL 33311

For Lease

martinezteamcommercial.com

Lease a small bay warehouse in a premier destination that's strategically located in the city of Fort Lauderdale, FL. The warehouses are in the heart of a bustling commercial hub. Our warehouse park offers an unparalleled opportunity for businesses seeking a convenient location, flexibility, and a thriving environment.



Asking Price: \$18.38 PSF Base Rent

NNN is \$2.89 PSF

Size for Bay 352 is 1100 SF

Type of Property: Warehouse Spaces

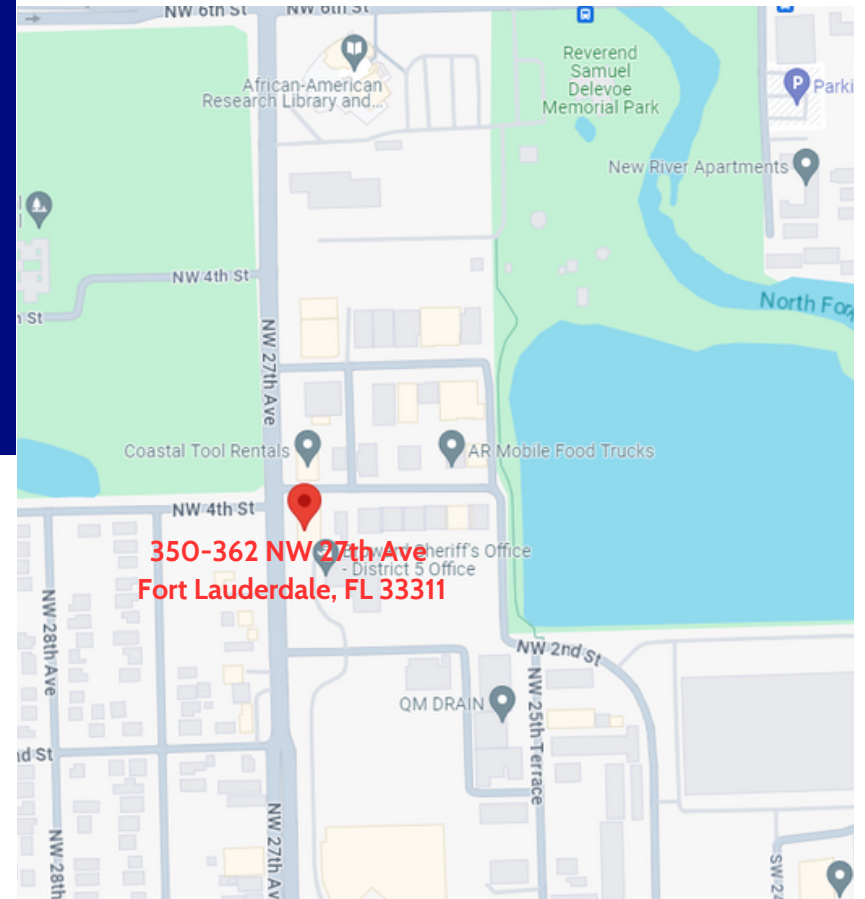
HIGHLIGHTS

- 3-5 year leases
- Plenty of Paved Yard in the rear for deliveries.
- 12' clear ceilings
- A/C in the front office
- Pride of Ownership

DEMOGRAPHICS

	2 mile	5 mile	10 mile
2023 Population	71,055	384,700	1,234,314
2023 Households	23,989	154,481	503,373
Average Household Income	\$69,063	\$82,855	\$83,933

350-362 NW 27th Ave
Fort Lauderdale, FL 33311





348

349

351

353

354

355

356

352

353

350

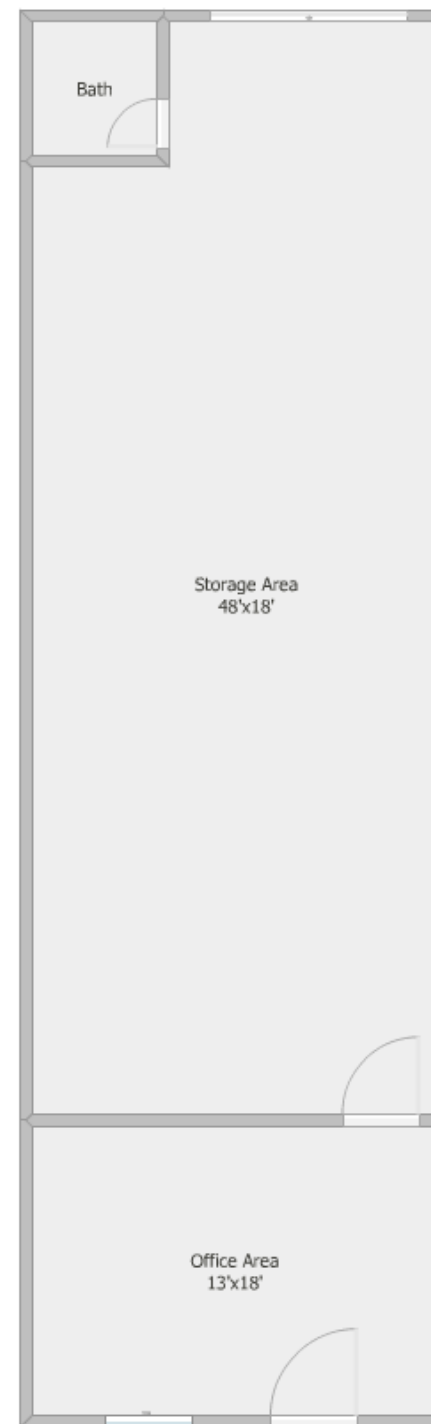
351





Floor Plan

350-362 NW 27th Ave
Fort Lauderdale, FL 33311

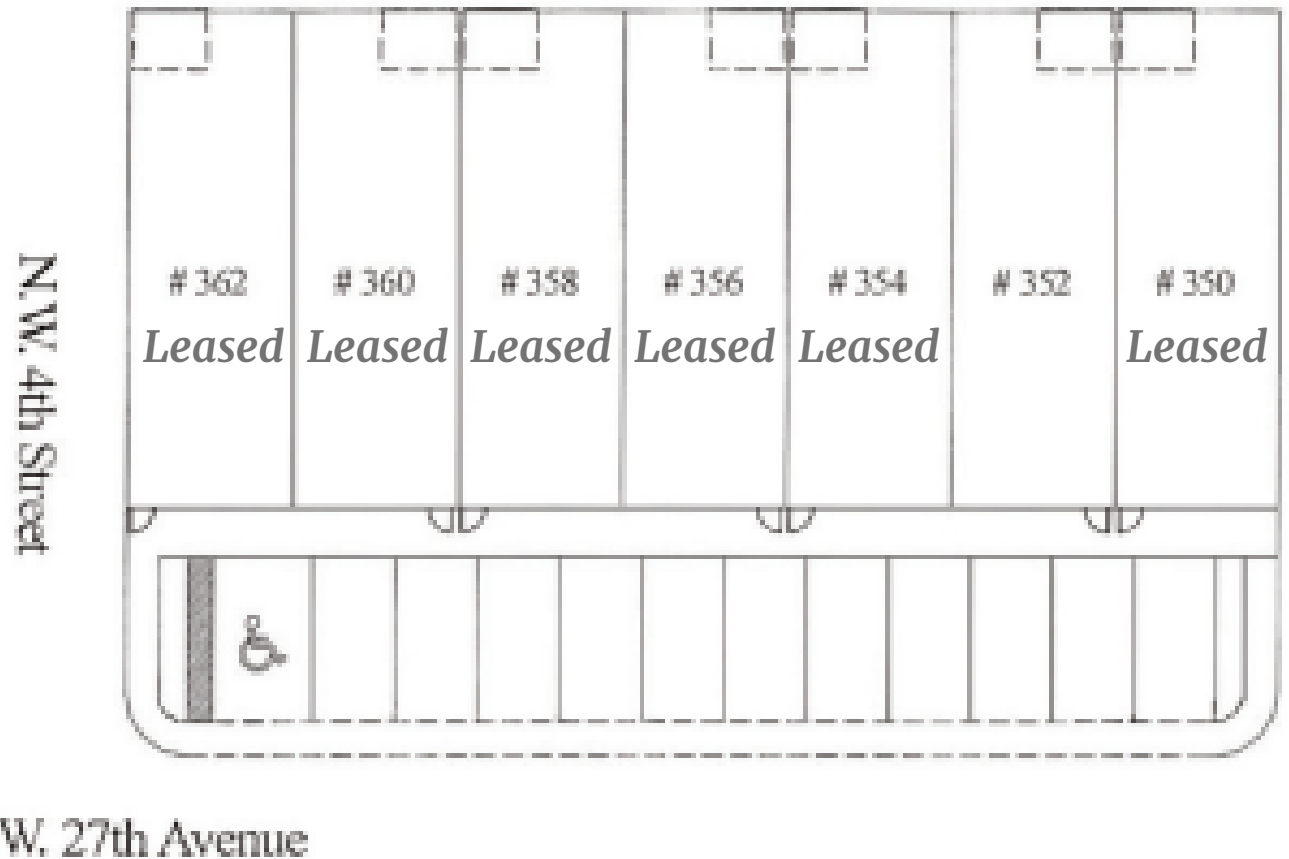


Gus Martinez, P.A.
954.394.7078
GusMartinez@KW.com



Site Plan

350-362 NW 27th Ave
Fort Lauderdale, FL 33311



Gus Martinez, P.A.
954.394.7078
GusMartinez@KW.com





Aerial View

350-362 NW 27th Ave
Fort Lauderdale, FL 33311



Gus Martinez, P.A.
954.394.7078
GusMartinez@KW.com

