

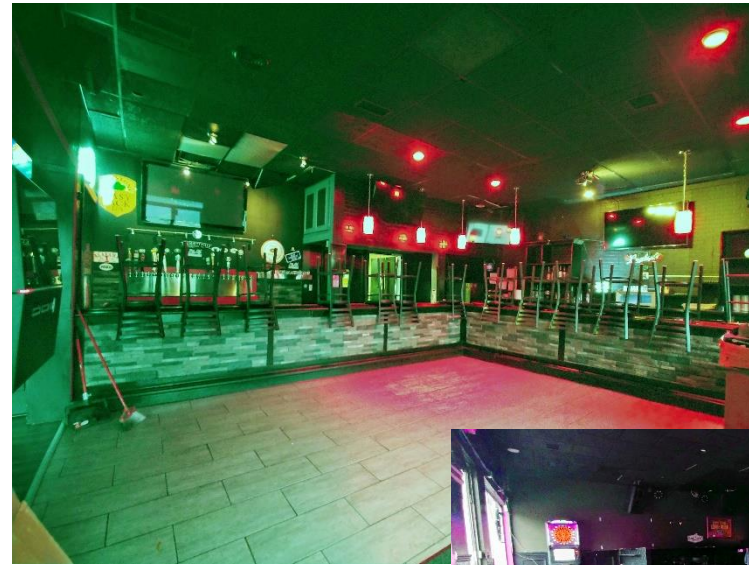
2,500 SF RESTAURANT / BAR FOR LEASE

VILLAGE OF HAMBURG RETAIL FOR LEASE

BUILDING FEATURES	
Building Size	5,140 ± Sq. Ft.
Available	2,500 ± Sq. Ft.
Lot Size	.83 ± Acre
Parking	50 ± Spaces

Property Highlights

- Turn-key bar / restaurant opportunity
- Located at the corner of South Lake Street and Pierce Avenue in the Village of Hamburg
- Hard signalized corner location
- Complete remodel
- All equipment included
- Newly paved parking lot
- Ideal for: bar/restaurant, food service, food prep



For more information, contact:
Stephen DeMeo
 Real Estate Salesperson
 716.570.0835 - cell
sdemeo@pyramidbrokerage.com

14 Lafayette Square, Suite 1900
 Buffalo, New York 14203
 phone: +1 716 852-7500

pyramidbrokerage.com

DEMOGRAPHIC	1 MILE	3 MILE	5 MILE
Population	6,402	27,841	61,840
Average Household Income	\$68,125	\$67,861	\$65,834

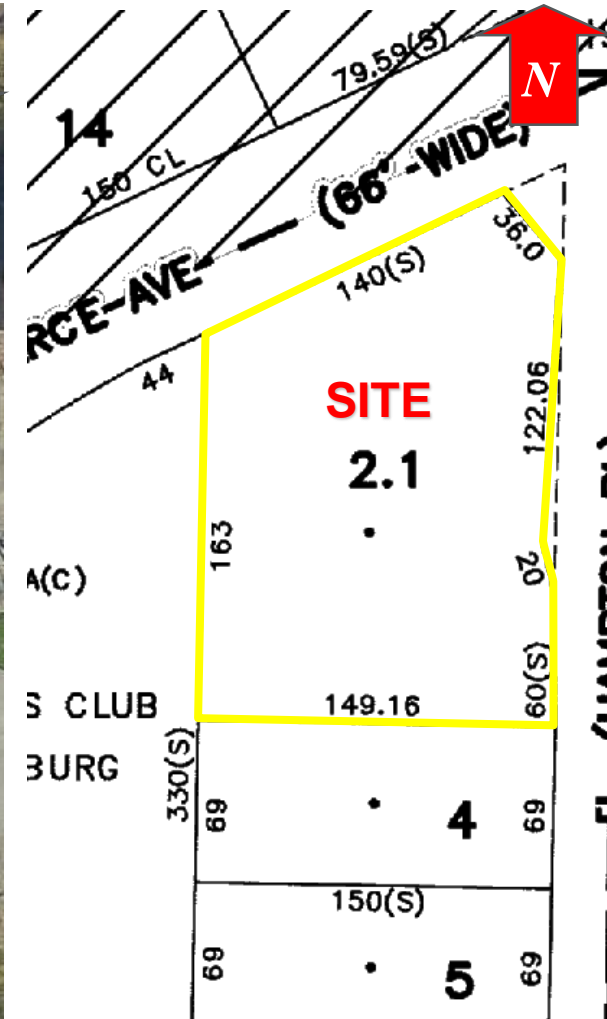
TRAFFIC COUNTS	
Pierce Avenue	12,331 AADT



Location Map



Aerial



Tax Map