



Lone Peak Center Two

LONE PEAK CENTER CAMPUS

MAIER SIEBEL BABER

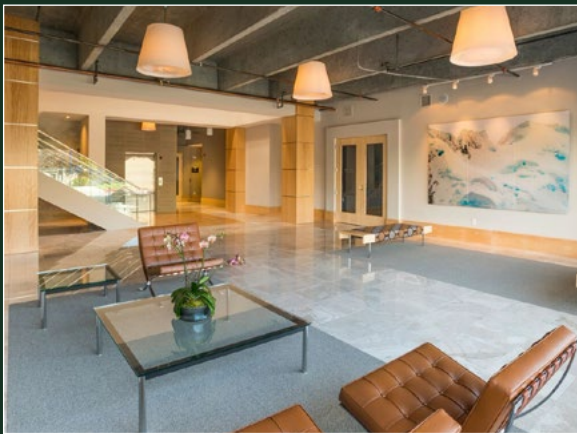


**CUSHMAN &
WAKEFIELD**
Commerce

LONE PEAK CENTER



RENOVATED MAIN LOBBY AT LONE PEAK CENTER 2



RENOVATED MAIN LOBBY AT LONE PEAK CENTER 3

PROPERTY FEATURES:

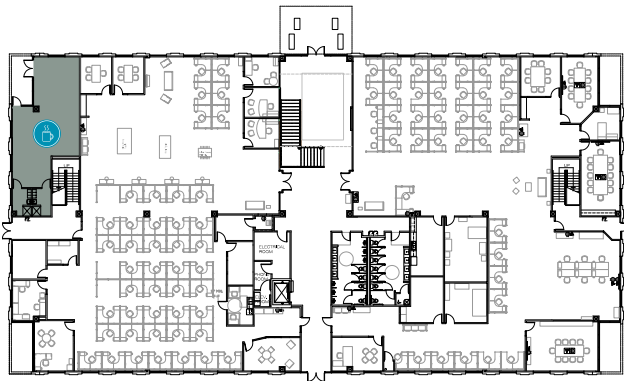
- Available Suites Range From 2,872 SF - 71,896 SF
- Full Floor Opportunity
- \$26.00 - \$28.00 / SF, Full Service with 5/1,000 Parking
- Up To 10/1,000 Parking Available at an Additional Cost
- Surface and Covered Parking
- Building Exterior and Monument Signage Available to Qualified Tenants
- Superior Access to I-15 Via 123rd and 114th South

PLANNED UPGRADES:

- Exterior Upgrades to Create a Fully Integrated Office Campus
- Complete Interior Lobby Remodel
- New Central 'Park' with an Outdoor Assembly and Eating Area
- Café/Coffee Shop and Dining Facility
- High Density Infrastructure
- Above-Standard Parking
- Volleyball Court
- Expanded Fitness Center



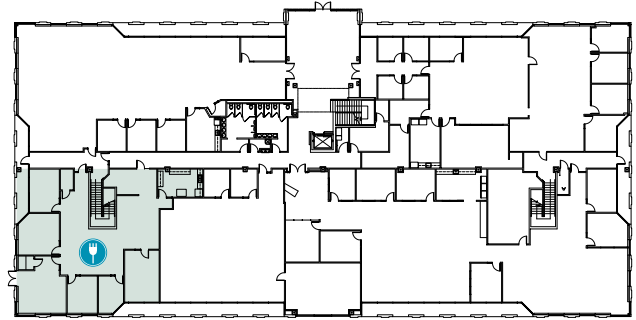
LONE PEAK CENTER 2



COFFEE SHOP: 1,194 SF



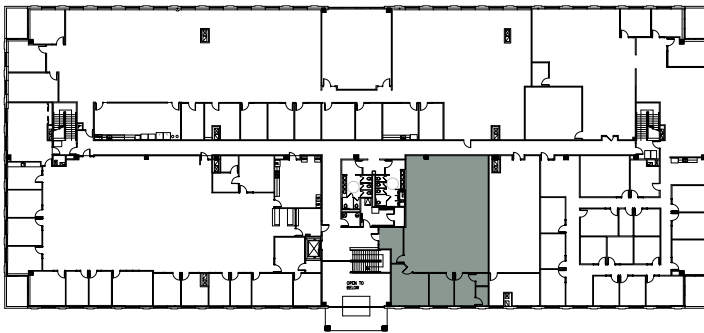
LONE PEAK CENTER 3



SUITE 140: 3,292 SF CAFE DIVISIBLE



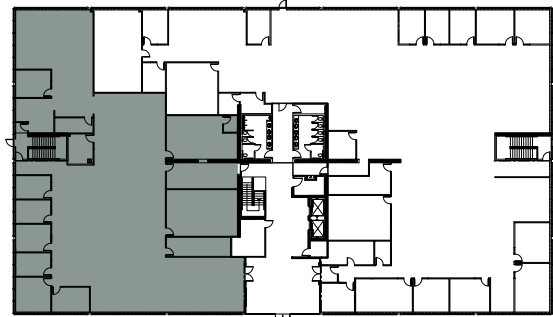
LONE PEAK CENTER 4



SUITE 240: 2,872 SF



LONE PEAK CENTER 6



SUITE 100: 10,162 SF AVAILABLE 12/1/17



LONE PEAK CENTER 9

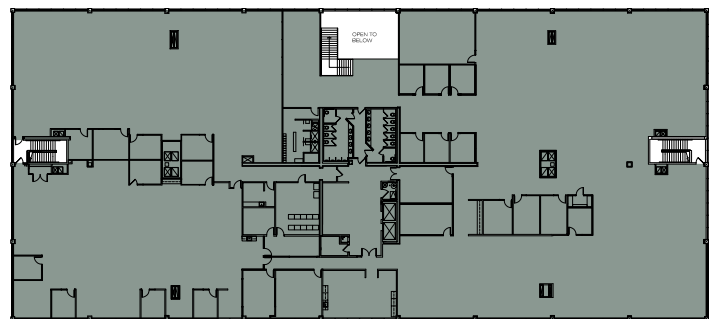
Full Building Opportunity
UP TO 71,896 SF AVAILABLE

MONUMENT & BUILDING SIGNAGE AVAILABLE FOR FULL FLOOR TENANTS



FIRST FLOOR

SUITE 100: 17,556 SF DIVISIBLE
SUITE 150: 17,755 SF

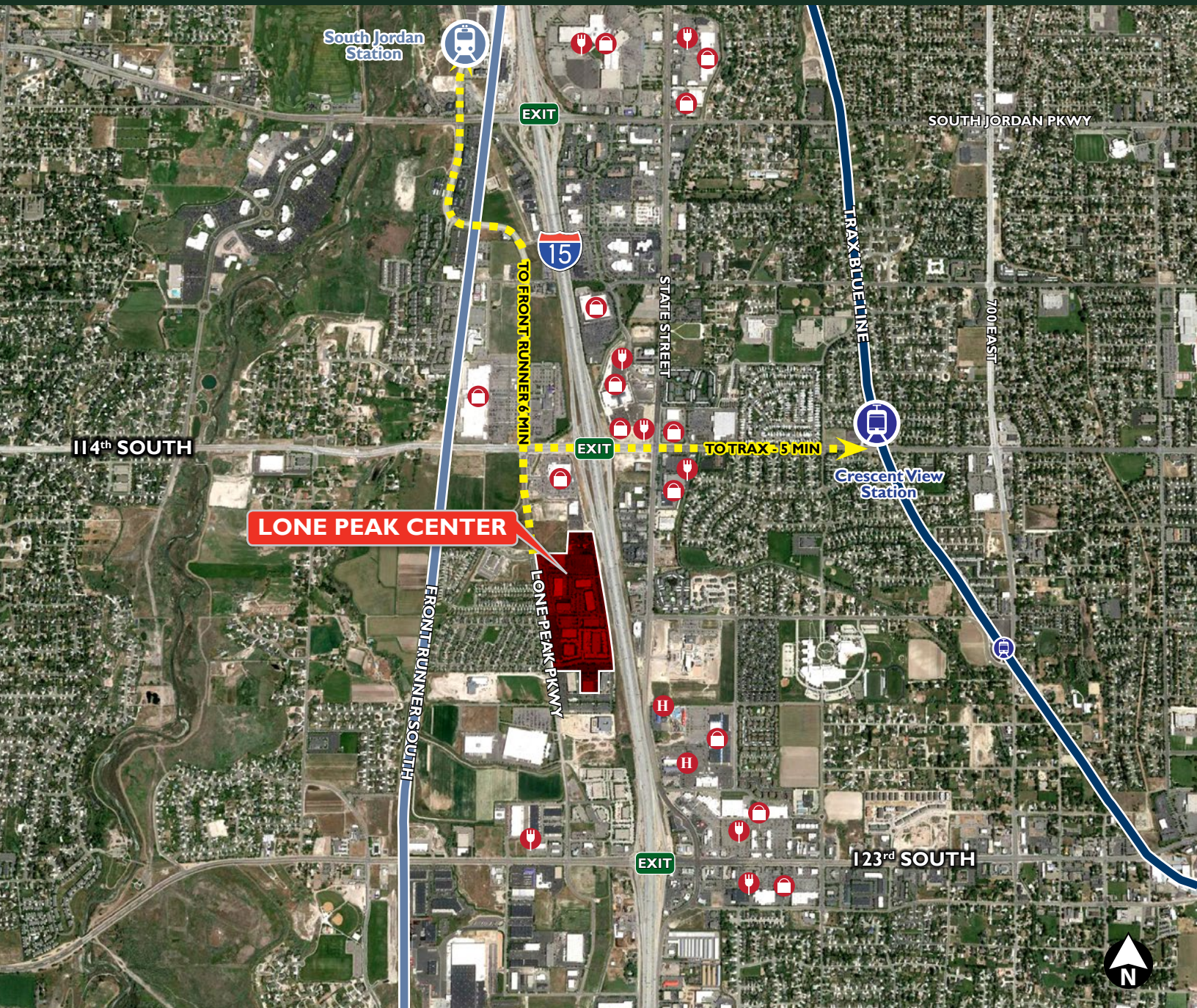


SECOND FLOOR

SUITE 200: 36,585 SF



LONE PEAK CENTER



DANA BAIRD CCIM

Executive Director

(801) 303 5526

dbaird@comre.com

MIKE RICHMOND

Executive Director

(801) 303 5434

mrichmond@comre.com

MAIER SIEBEL BABER



**CUSHMAN &
WAKEFIELD**

Commerce

©2017, Commerce Real Estate Solutions. Disclaimer: The above information is given with the obligation that all negotiations relating to the purchase, renting, or leasing of the property described above shall be conducted through Commerce Real Estate Solutions. No warranty or representation, express or implied, is made as to the accuracy of the information contained herein, and same is submitted subject to errors, omissions, change of price, rental or other encumbrances, withdrawal without notice, and to any special listing conditions imposed by the seller. Prospective buyers should conduct their own due diligence. Some aerial photography by DigitalGlobe or Aerials Express.
path: G:\1 - Projects\Richmond, Mike\1 - Flyers\LonePeakCenter_Flyer