

FOR  
LEASE

4171-4189 L.B. McLEOD  
WEST PARK VII

## WEST PARK VII

4177 LB McLEOD ROAD | ORLANDO, FL | 12,050 SF AVAILABLE



CITE PARTNERS

# PROPERTY SPECIFICATIONS

## SUITE 4177

- 12,050 SF available
- 1,723 SF of office
- 1 dock door
- 1 ramp door
- Available March 1st

## THE PROPERTY

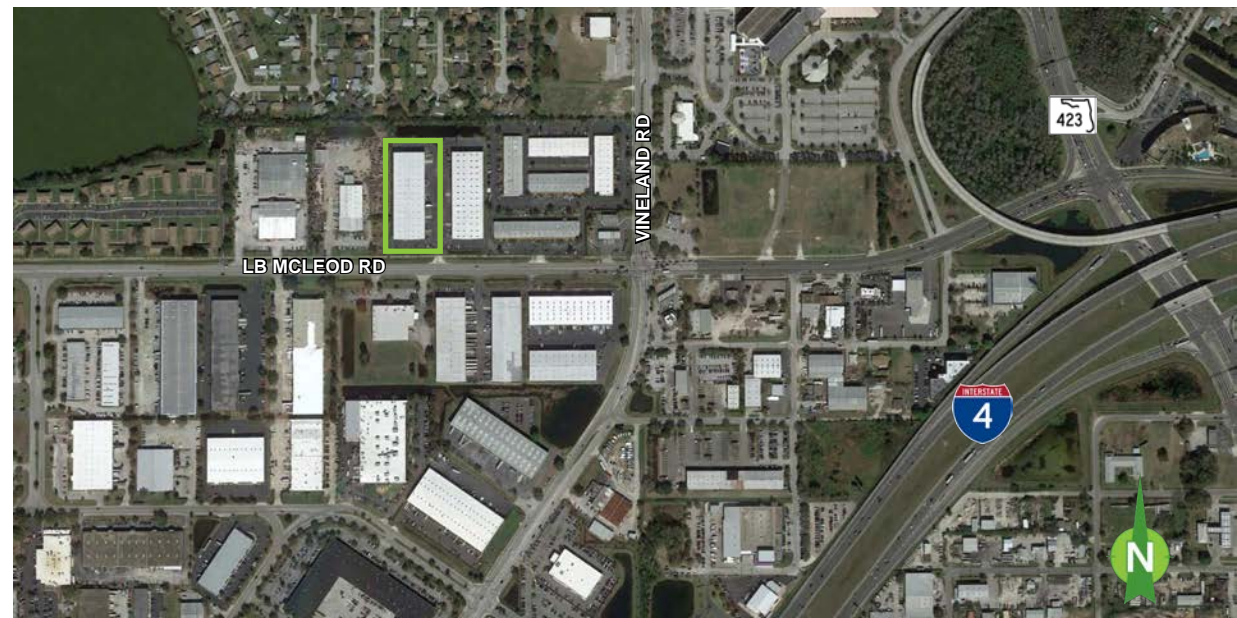
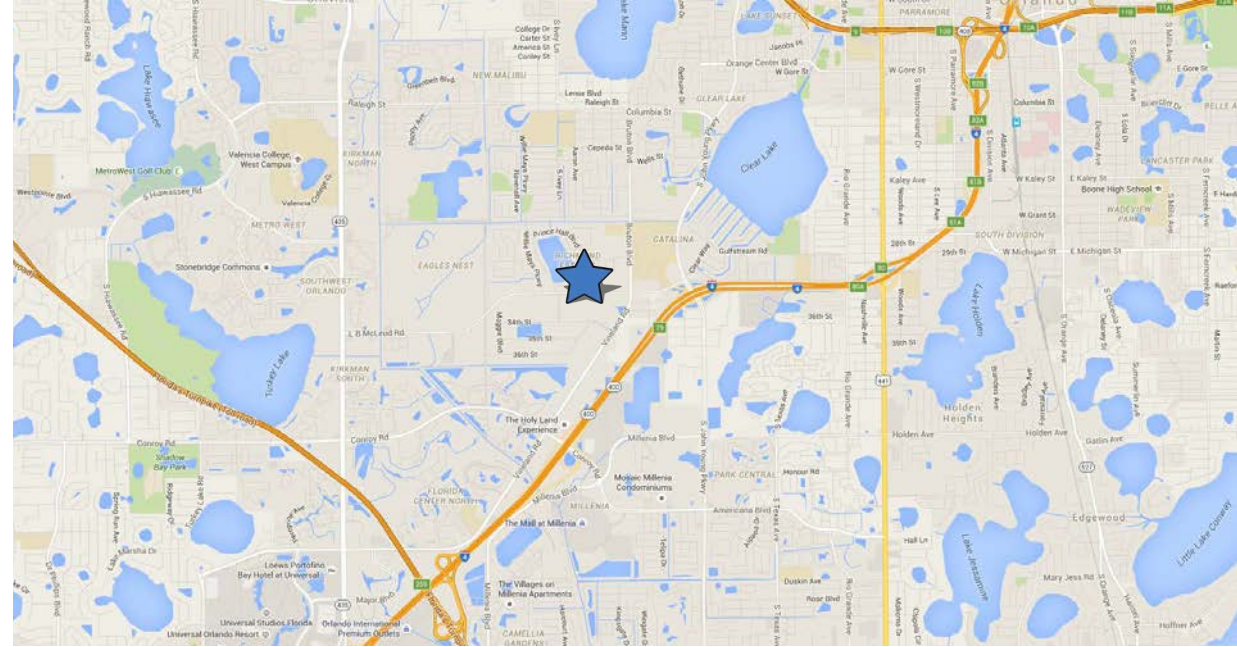
- 50,161 SF
- 18' - 20' clear height
- 132' building depth
- Front load
- .215/2,000 SF sprinkler density
- Built in 1985
- 6.04 Acres
- Zoned I-P, City of Orlando

## LOCATION

- Located in 33rd Street Industrial Park
- Excellent access to John Young Parkway, Kirkman Road, Interstate 4, and the Florida Turnpike

## THE PRICE

\$6.25/SF NNN



**MATT SULLIVAN, SIOR, CCIM**  
Managing Director, Principal  
matt.sullivan@citepartners.com  
407.930.1802

**WILSON MCDOWELL, SIOR, CCIM**  
Managing Director, Principal  
wilson.mcdowell@citepartners.com  
407.930.1801

**BOBBY ISOLA, SIOR, CCIM**  
Director, Principal  
bobby.isola@citepartners.com  
407.930.1804

**CITE PARTNERS**  
100 East Pine St., Suite 200  
Orlando, FL 32801  
www.citepartners.com

### Disclaimer:

This document has been prepared by Cite Partners for advertising and general information only. Cite Partners makes no guarantees, representations or warranties of any kind, expressed or implied, regarding the information including, but not limited to, warranties of content, accuracy and reliability. Any interested party should undertake their own inquiries as to the accuracy of the information. Cite Partners excludes unequivocally all inferred or implied terms, conditions and warranties arising out of this document and excludes all liability for loss and damages arising therefrom. This publication is the copyrighted property of Cite Partners and/or its licensor(s). All rights reserved.

FLOOR PLAN

