



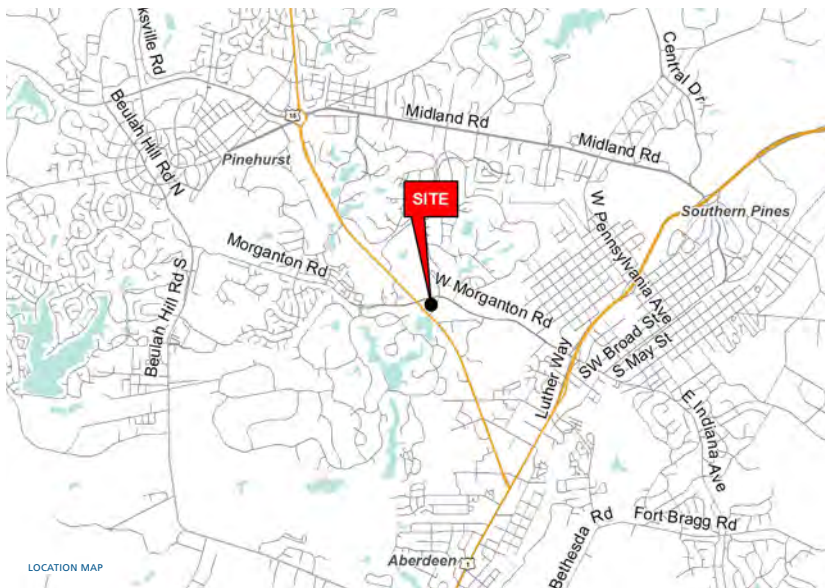
THE PROVIDENCE GROUP
EXCELLENCE IN RETAIL REAL ESTATE

FOR LEASE



PINECREST PLAZA

HWY 15/501 AT MORGANTON RD. | PINEHURST, NORTH CAROLINA 28374



PROPERTY / LEASE INFORMATION

SPACE AVAILABLE:	1,400 SF
LEASE RATE:	Please Call
EST TICAM:	Please Call
TOTAL GLA:	±277,570 SF

PROPERTY DESCRIPTION

Pinecrest Plaza is ideally situated in the epicenter of the Sandhills Region in Moore County. It acts as a super-regional center drawing residents from the surrounding cities and towns as well as a steady flow of tourists.

The plaza underwent a total facade & landscaping renovation in 2013 with addition upgrades to the parking lot and exterior lighting.

DEMOGRAPHICS (2018)

	1 MILE	3 MILE	5 MILE
POPULATION	1,654	24,489	45,017
AVERAGE HH INCOME	\$121,491	\$81,473	\$84,011
MEDIAN HH INCOME	\$83,455	\$69,220	\$70,552
BUSINESS ESTABLISHMENTS	116	1,865	2,626
DAYTIME EMPLOYMENT	1,627	21,834	29,670

CO-TENANTS



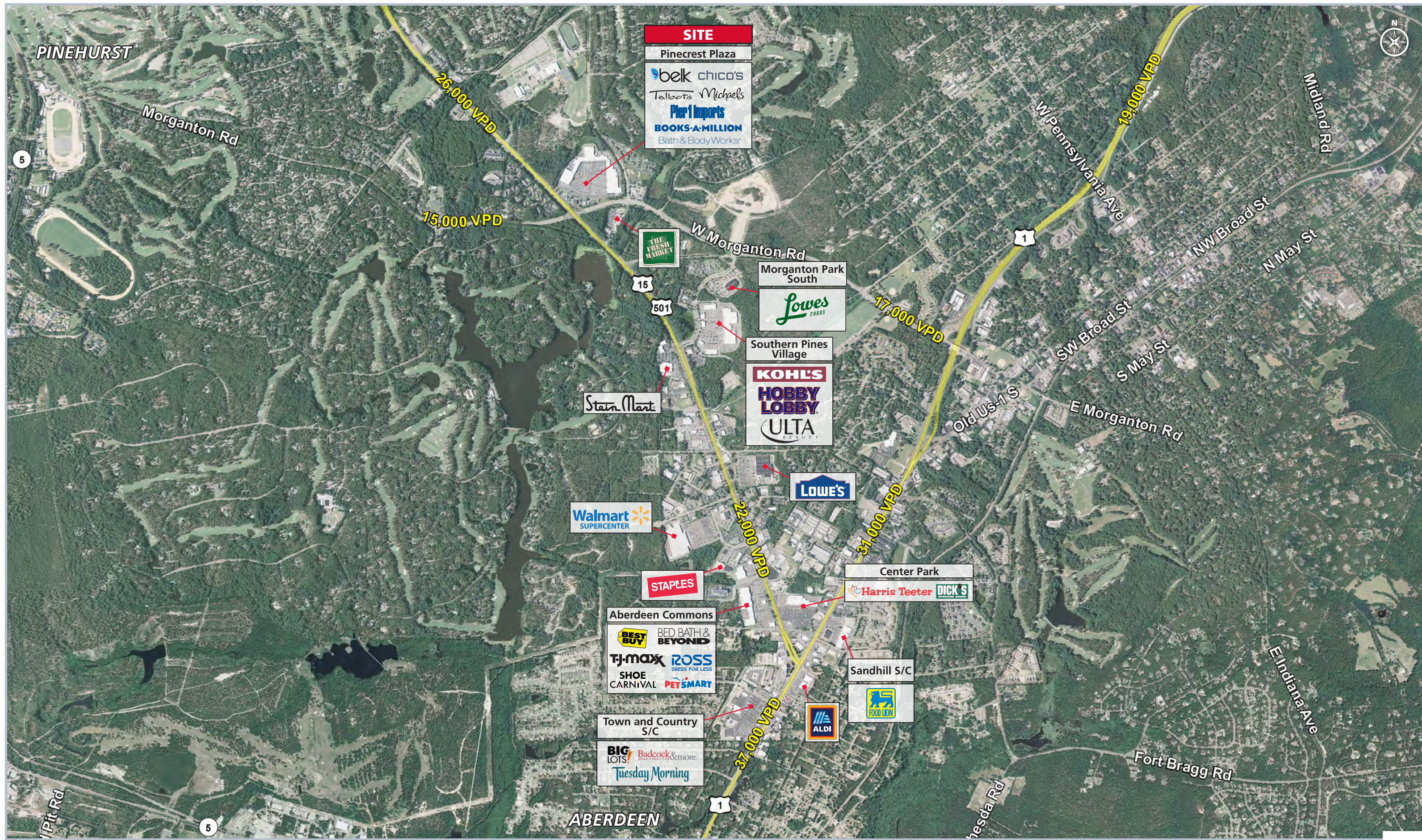
PINECREST PLAZA

HWY 15/501 AT MORGANTON RD. | PINEHURST, NORTH CAROLINA 28374



- | | | |
|----------------------|----------------------------|---------------------------|
| 1. Belk | 11. Bath & Body Works | 21. GNC |
| 2. Belk Home Store | 12. Claire's | 22. Maren's |
| 3. Francesca's | 13. Available 1,400 | 23. Subway |
| 4. Chico's | 14. Hair Cuttery | 24. Rite Aid |
| 5. Daphne's Hallmark | 15. The UPS Store | 25. Food Lion |
| 6. Pier One Imports | 16. Cato | 26. Books-A-Million |
| 7. Hibbett Sports | 17. Moore Music | 27. Michael's |
| 8. Apricot Lane | 18. Sally Beauty | 28. Burke's HomeCentric |
| 9. T-Mobile | 19. Zale's | 29. The Shoe Department |
| 10. Belk Men's Store | 20. Peking Wok | 30. Talbots |
| | | 31. Hand & Stone |
| | | 32. McAlister's Deli |

© 2019 The Providence Group. All rights reserved. The information above has been obtained by sources deemed reliable. While we do not doubt its accuracy, we have not verified it and make no guarantee, warranty, or representation of it. It is your responsibility to independently confirm its accuracy and completeness. You and your advisors should conduct a careful, independent investigation of the property to determine to your satisfaction the suitability of the property for your needs.



AERIAL