

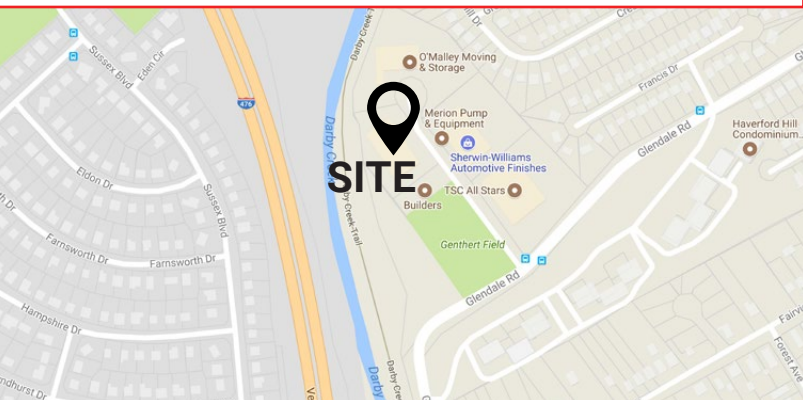
± 3,118 - 6,235 SF WAREHOUSE SPACE
4 RAYMOND DRIVE, HAVERTOWN, PA 19083

FOR LEASE:
\$10.50 PSF NET LEASE

PROPERTY FEATURES

- ✓ ± 3,118 - 6,235 SF Warehouse Space Available
- ✓ On-Site Management
- ✓ 1 Drive-in door, 1 loading dock & 17' ceilings
- ✓ Convenient to restaurants, banks and shopping
- ✓ Excellent access to major highways including Route 3, Interstate 476 (Blue Route) and I-95
- ✓ Less than 2 miles from 2 different Blue Route (476) entrances
- ✓ Public transportation (bus) nearby

UP TO 2 MONTHS FREE RENT, INQUIRE AGENT



CONTACT US

RONALD CASEY
Phone: 610.359.1100
Cell: 610.764.5826
Email: rcasey@zmcre.com

1306 Wilmington Pike, Suite A-2
West Chester, PA 19382
610.359.1100
www.zmcre.com


ZOMMICK MCMAHON
COMMERCIAL REAL ESTATE

HAVERTOWN SITE LOCATION AERIAL - 4 RAYMOND DRIVE

Average Tenancy: 10-12 Years
Longest: 17 Years



Since the 1970's, the Iacobucci Family has built and managed this premier Industrial Park in Havertown. Now in its second generation, Francis Iacobucci Properties continues the tradition of managing with integrity, quality and value.

COME JOIN: Sherwin Williams, Axelacare Health, Pennsylvania Lottery Association, RCN, Merion Pump, O'Malley's Moving as fellow tenants.



CONTACT US

RONALD CASEY

Phone: 610.359.1100

Cell: 610.764.5826

Email: rcasey@zmcre.com

1306 Wilmington Pike, Suite A-2

West Chester, PA 19382

610.359.1100

www.zmcre.com

HAVERTOWN PROPERTY PHOTOS - 4 RAYMOND DRIVE



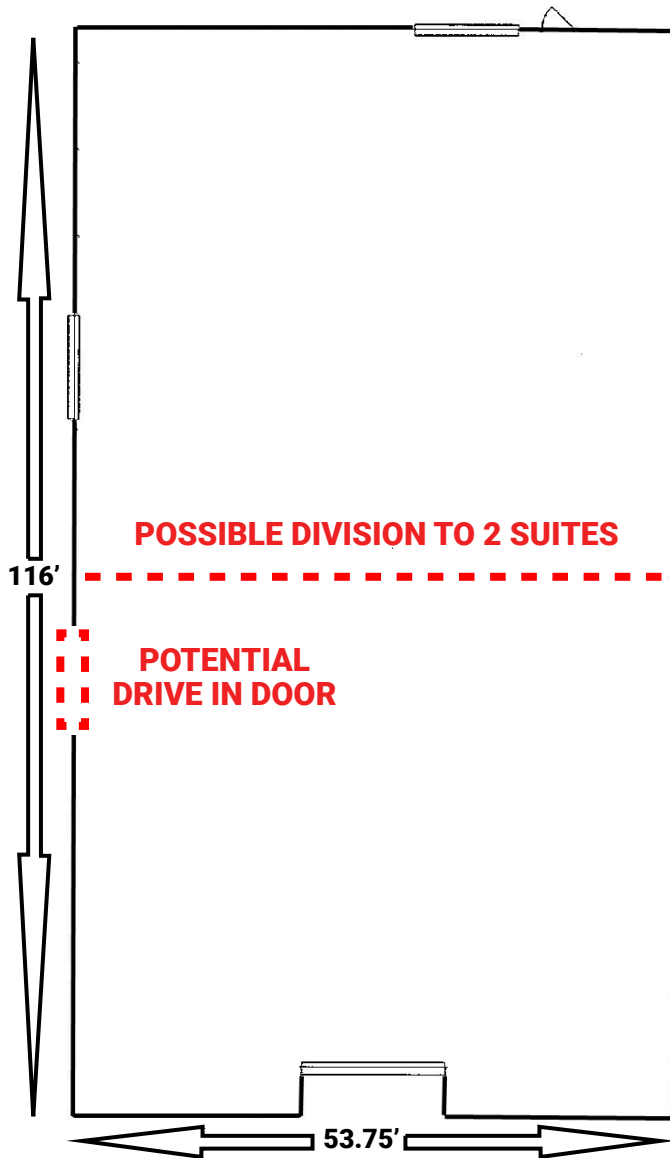

ZOMMICK MCMAHON
COMMERCIAL REAL ESTATE

CONTACT US

RONALD CASEY
Phone: 610.359.1100
Cell: 610.764.5826
Email: rcasey@zmcre.com

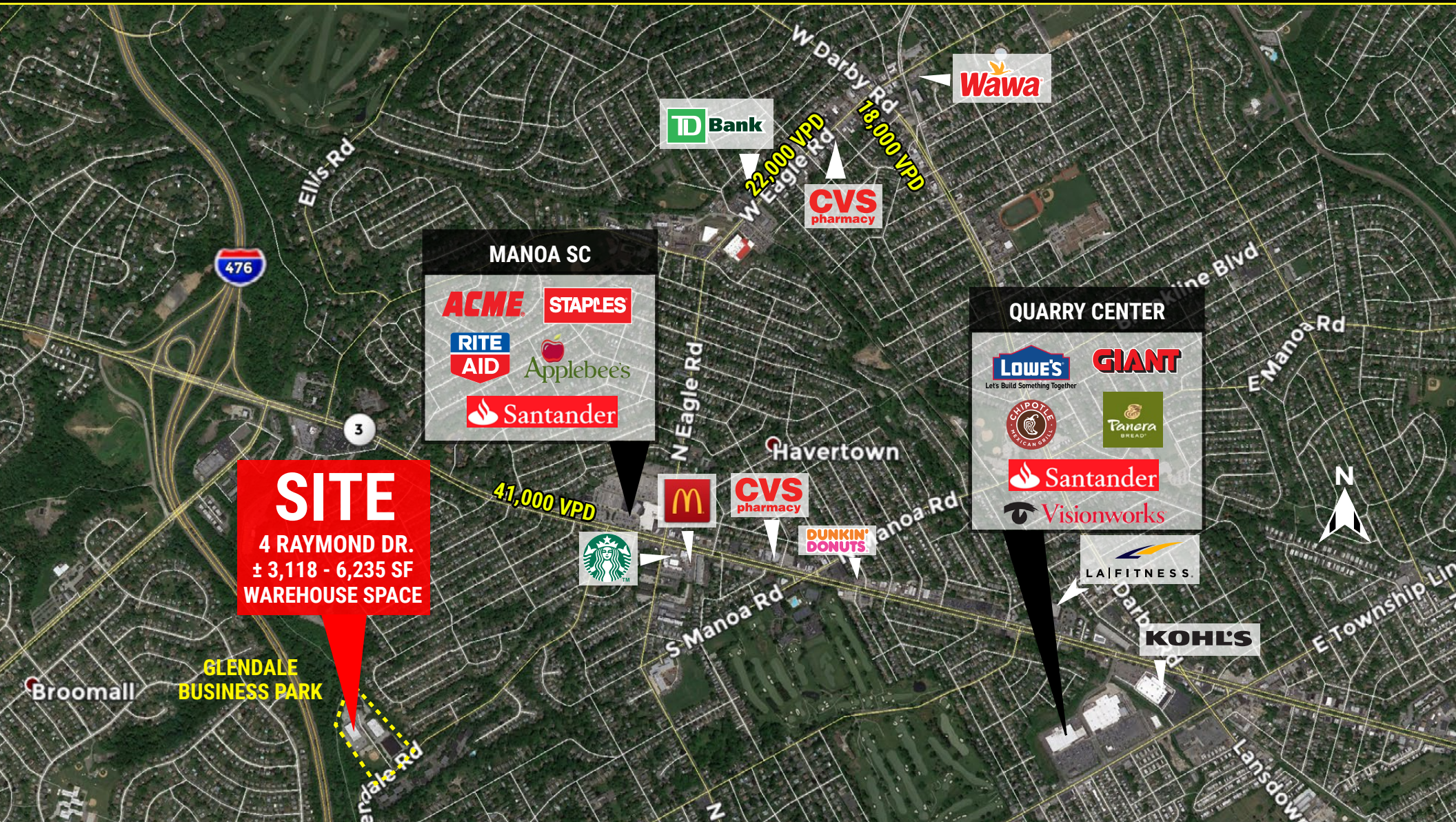
1306 Wilmington Pike, Suite A-2
West Chester, PA 19382
610.359.1100
www.zmcre.com

HAVERTOWN FLOOR PLAN - 4 RAYMOND DRIVE



CONTACT US

HAVERTOWN MARKET AERIAL - 4 RAYMOND DRIVE



SITE
4 RAYMOND DR.
± 3,118 - 6,235 SF
WAREHOUSE SPACE

MANOA SC
ACME STAPLES
RITE AID Applebees
Santander

QUARRY CENTER
LOWE'S GIANT
Let's Build Something Together
CHIPOTLE MEXICAN GRILL Tanera BREAD
Santander Visionworks

CONTACT US

RONALD CASEY
Phone: 610.359.1100
Cell: 610.764.5826
Email: rcasey@zmcre.com

1306 Wilmington Pike, Suite A-2
West Chester, PA 19382
610.359.1100
www.zmcre.com

ABOUT ZOMMICK McMAHON COMMERCIAL REAL ESTATE

Zommick McMahon Commercial Real Estate, Inc. has been a Metro Philadelphia Area staple since its inception in 1949. The Company was founded by Joseph Zommick, and continues today with Ryan McMahon and his highly experienced staff, whom are all results-oriented professionals.

SOME OF OUR SATISFIED CLIENTS:



CONTACT US

RONALD CASEY
Phone: 610.359.1100
Cell: 610.764.5826
Email: rcasey@zmcre.com

1306 Wilmington Pike, Suite A-2
West Chester, PA 19382
610.359.1100
www.zmcre.com