



FOR LEASE

Queen Anne Square

200-220 WEST MERCER STREET, SEATTLE



SHARED building conference room

INCLUDES showers and bike storage

AVAILABLE spaces from 792 to 5,468 SF

PARKING ratio: 1.95/1,000 RSF including access to electronic car charging stations

CONVENIENT walking distance to many amenities - from cafes to fine dining, retail, grocery stores, Rapid Ride, the Space Needle, Key Arena & Seattle Center

LOCATED minutes from downtown Seattle, Interstate 5 & Highway 99

LESS THAN a 15-minute walk to South Lake Union and 1.5 miles from the Downtown Central Business District

VIEWS of Elliott Bay, the Olympic Mountains and a large landscaped plaza

JEFF HUNTINGTON

206.296.9619

jeff.huntington@kidder.com

TODD BATTISON

206.296.9621

todd.battison@kidder.com

MICHELLE CRABTREE, CPM, RPA

206.270.6503

mcrabtree@steelwavellc.com

KIDDER.COM

This information supplied herein is from sources we deem reliable. It is provided without any representation, warranty, or guarantee, expressed or implied as to its accuracy. Prospective Buyer or Tenant should conduct an independent investigation and verification of all matters deemed to be material, including, but not limited to, statements of income and expenses. Consult your attorney, accountant, or other professional advisor.

**Kidder
Mathews**

FOR LEASE

Queen Anne Square

200-220 WEST MERCER STREET, SEATTLE



EAST BUILDING

AVAILABLE SPACE		
Suite	SF	Available
East Suite 209	2,440	Now
East Suite 407	792	Now
East Suite 412	2,358	Now

WEST BUILDING

AVAILABLE SPACE		
Suite	SF	Available
West Suite 225	2,466*	Now
West Suite 250	3,002*	Now
West Suite 400	2,745	11/30/2020

*CAN BE COMBINED FOR 5,468 SF

JEFF HUNTINGTON

206.296.9619

jeff.huntington@kidder.com

TODD BATTISON

206.296.9621

todd.battison@kidder.com

MICHELLE CRABTREE, CPM, RPA

206.270.6503

mcrabtree@steelwavellc.com

KIDDER.COM

This information supplied herein is from sources we deem reliable. It is provided without any representation, warranty, or guarantee, expressed or implied as to its accuracy. Prospective Buyer or Tenant should conduct an independent investigation and verification of all matters deemed to be material, including, but not limited to, statements of income and expenses. Consult your attorney, accountant, or other professional advisor.

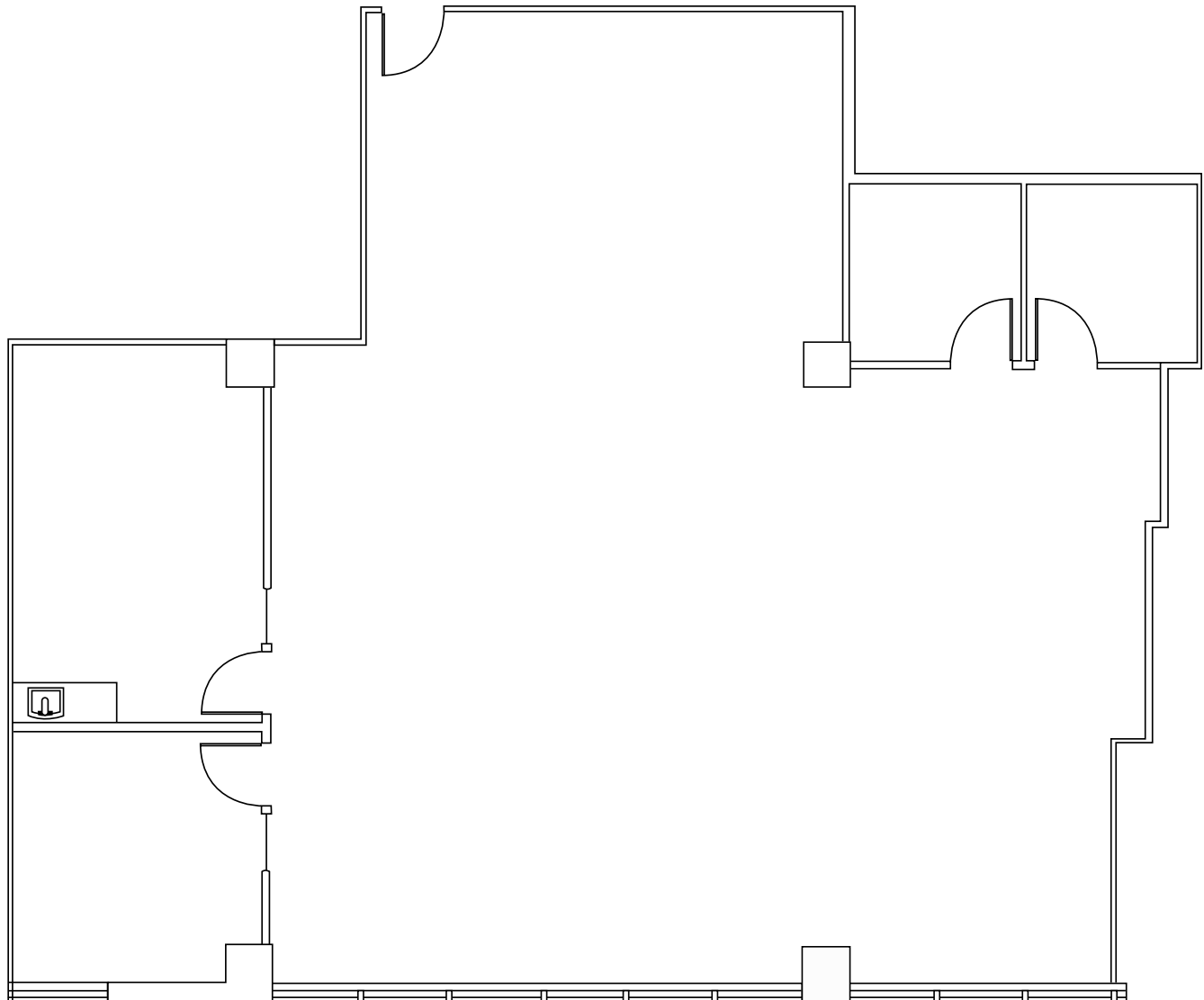


FOR LEASE

Queen Anne Square

200-220 WEST MERCER STREET, SEATTLE

EAST SUITE 209: 2,440 SQUARE FEET



JEFF HUNTINGTON
206.296.9619
jeff.huntington@kidder.com

TODD BATTISON
206.296.9621
todd.battison@kidder.com

MICHELLE CRABTREE, CPM, RPA
206.270.6503
mcrabtree@steelwavelc.com

KIDDER.COM

This information supplied herein is from sources we deem reliable. It is provided without any representation, warranty, or guarantee, expressed or implied as to its accuracy. Prospective Buyer or Tenant should conduct an independent investigation and verification of all matters deemed to be material, including, but not limited to, statements of income and expenses. Consult your attorney, accountant, or other professional advisor.

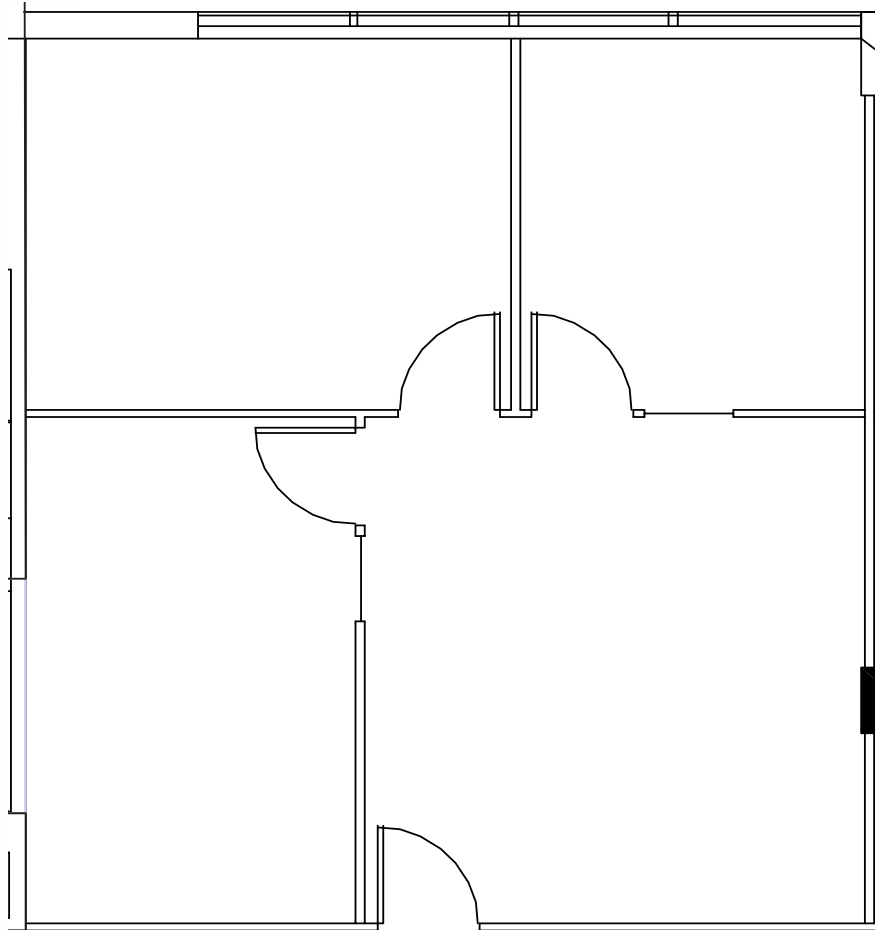


FOR LEASE

Queen Anne Square

200-220 WEST MERCER STREET, SEATTLE

EAST SUITE 407: 792 SQUARE FEET



JEFF HUNTINGTON
206.296.9619
jeff.huntington@kidder.com

TODD BATTISON
206.296.9621
todd.battison@kidder.com

MICHELLE CRABTREE, CPM, RPA
206.270.6503
mcrabtree@steelwavelc.com

KIDDER.COM

This information supplied herein is from sources we deem reliable. It is provided without any representation, warranty, or guarantee, expressed or implied as to its accuracy. Prospective Buyer or Tenant should conduct an independent investigation and verification of all matters deemed to be material, including, but not limited to, statements of income and expenses. Consult your attorney, accountant, or other professional advisor.

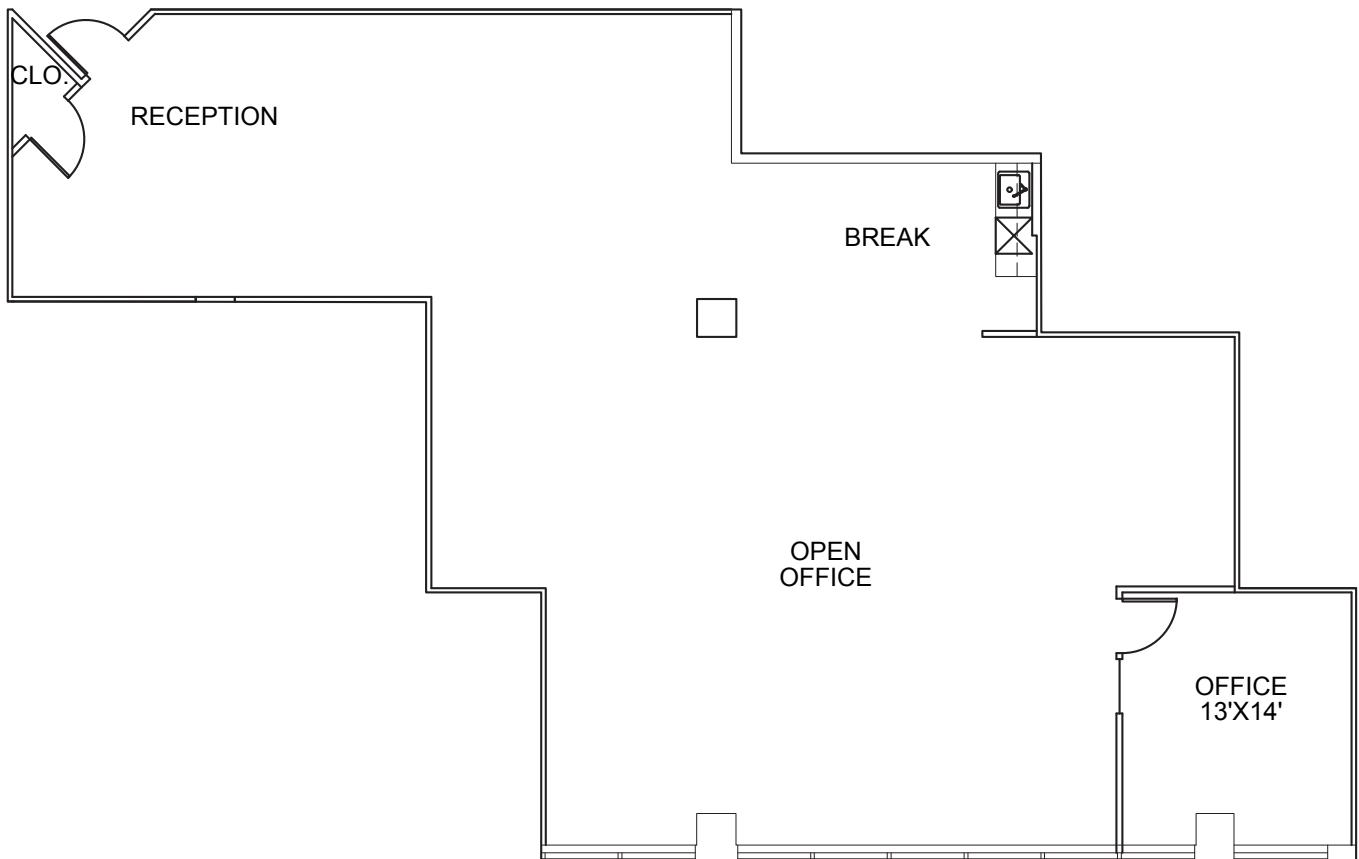


FOR LEASE

Queen Anne Square

200-220 WEST MERCER STREET, SEATTLE

EAST SUITE 412: 2,358 SQUARE FEET



JEFF HUNTINGTON
206.296.9619
jeff.huntington@kidder.com

TODD BATTISON
206.296.9621
todd.battison@kidder.com

MICHELLE CRABTREE, CPM, RPA
206.270.6503
mcrabtree@steelwavelc.com

KIDDER.COM

This information supplied herein is from sources we deem reliable. It is provided without any representation, warranty, or guarantee, expressed or implied as to its accuracy. Prospective Buyer or Tenant should conduct an independent investigation and verification of all matters deemed to be material, including, but not limited to, statements of income and expenses. Consult your attorney, accountant, or other professional advisor.

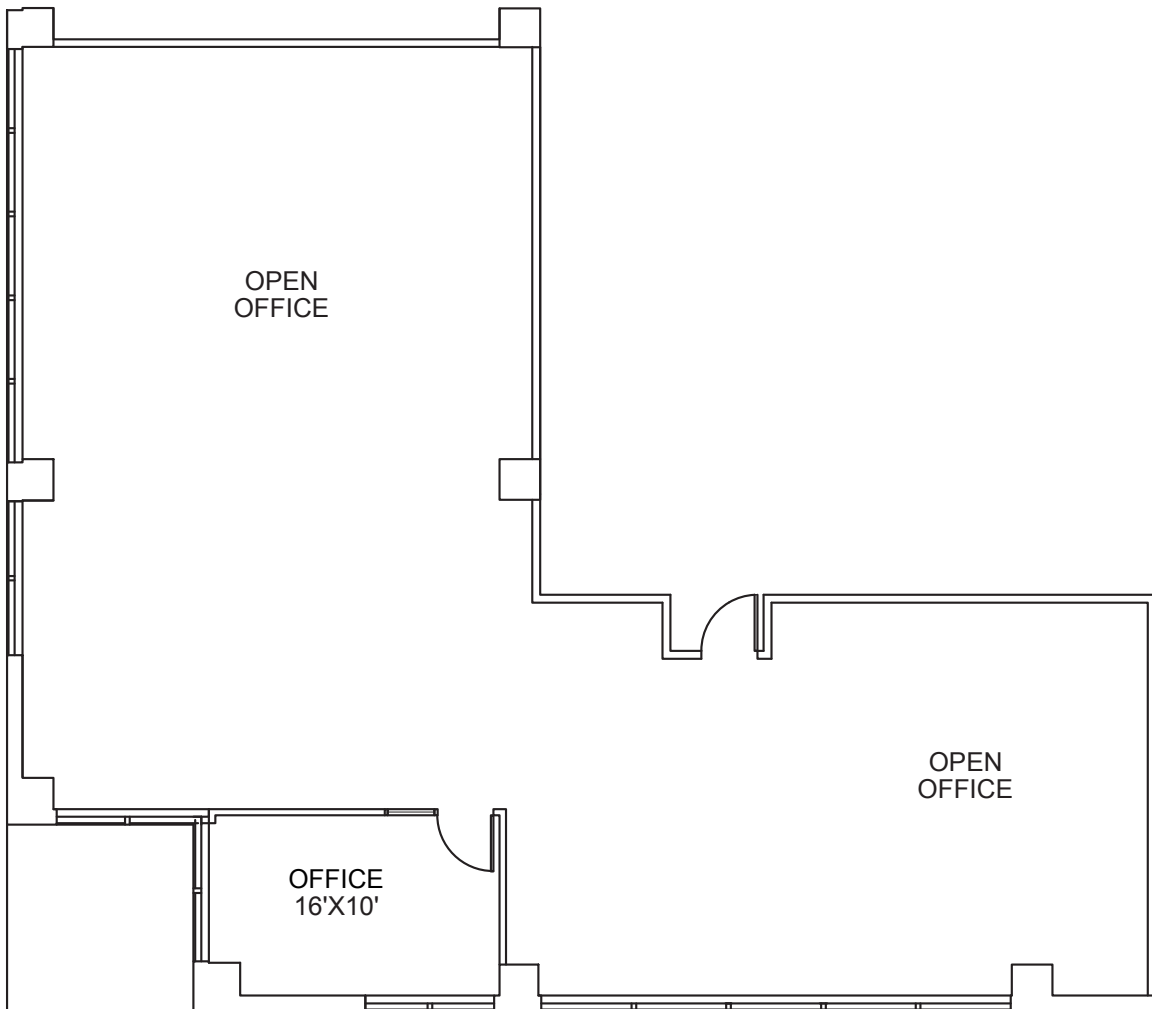


FOR LEASE

Queen Anne Square

200-220 WEST MERCER STREET, SEATTLE

WEST SUITE 225: 2,466 SQUARE FEET



JEFF HUNTINGTON
206.296.9619
jeff.huntington@kidder.com

TODD BATTISON
206.296.9621
todd.battison@kidder.com

MICHELLE CRABTREE, CPM, RPA
206.270.6503
mcrabtree@steelwavelc.com

KIDDER.COM

This information supplied herein is from sources we deem reliable. It is provided without any representation, warranty, or guarantee, expressed or implied as to its accuracy. Prospective Buyer or Tenant should conduct an independent investigation and verification of all matters deemed to be material, including, but not limited to, statements of income and expenses. Consult your attorney, accountant, or other professional advisor.

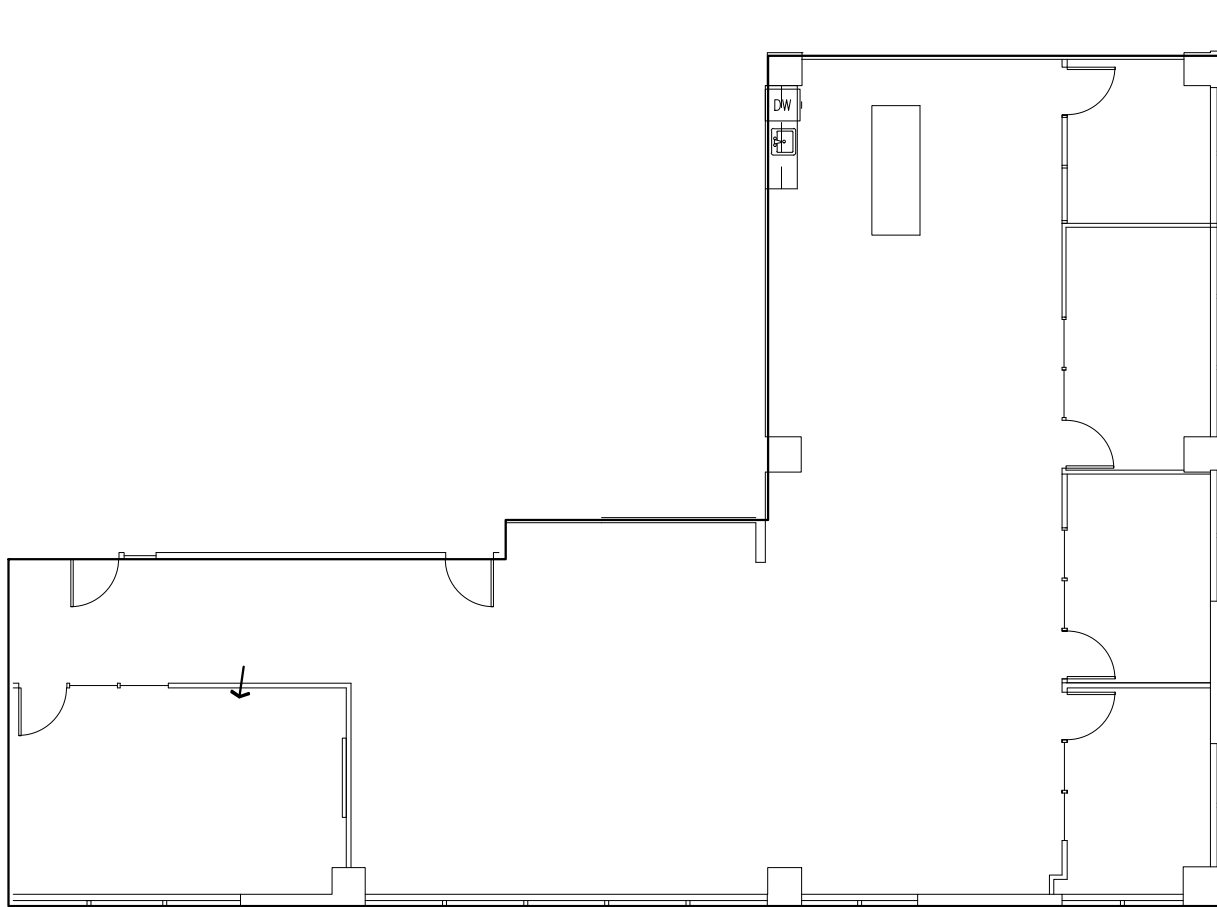


FOR LEASE

Queen Anne Square

200-220 WEST MERCER STREET, SEATTLE

WEST SUITE 250: 3,002 SQUARE FEET



JEFF HUNTINGTON
206.296.9619
jeff.huntington@kidder.com

TODD BATTISON
206.296.9621
todd.battison@kidder.com

MICHELLE CRABTREE, CPM, RPA
206.270.6503
mcrabtree@steelwavelc.com

KIDDER.COM

This information supplied herein is from sources we deem reliable. It is provided without any representation, warranty, or guarantee, expressed or implied as to its accuracy. Prospective Buyer or Tenant should conduct an independent investigation and verification of all matters deemed to be material, including, but not limited to, statements of income and expenses. Consult your attorney, accountant, or other professional advisor.

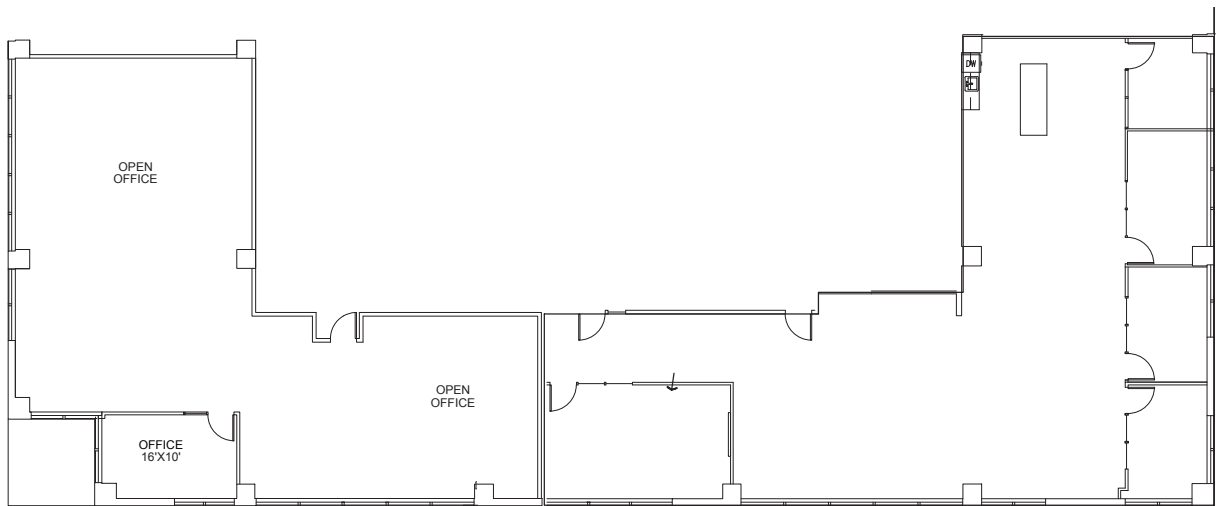


FOR LEASE

Queen Anne Square

200-220 WEST MERCER STREET, SEATTLE

WEST SUITES 225 & 250 COMBINED: 5,468 SQUARE FEET



JEFF HUNTINGTON
206.296.9619
jeff.huntington@kidder.com

TODD BATTISON
206.296.9621
todd.battison@kidder.com

MICHELLE CRABTREE, CPM, RPA
206.270.6503
mcrabtree@steelwavelc.com

KIDDER.COM

This information supplied herein is from sources we deem reliable. It is provided without any representation, warranty, or guarantee, expressed or implied as to its accuracy. Prospective Buyer or Tenant should conduct an independent investigation and verification of all matters deemed to be material, including, but not limited to, statements of income and expenses. Consult your attorney, accountant, or other professional advisor.

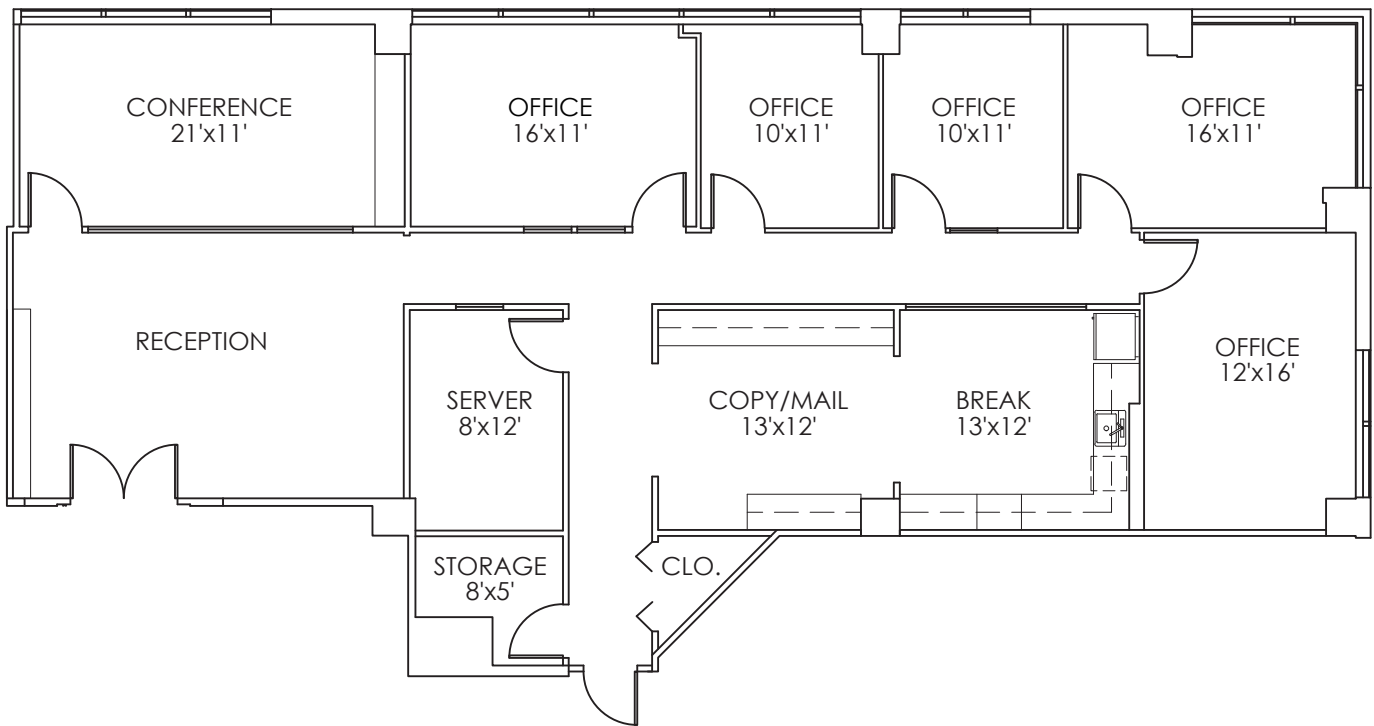


FOR LEASE

Queen Anne Square

200-220 WEST MERCER STREET, SEATTLE

WEST SUITE 400: 2,745 SQUARE FEET



JEFF HUNTINGTON
206.296.9619
jeff.huntington@kidder.com

TODD BATTISON
206.296.9621
todd.battison@kidder.com

MICHELLE CRABTREE, CPM, RPA
206.270.6503
mcrabtree@steelwavelc.com

KIDDER.COM

This information supplied herein is from sources we deem reliable. It is provided without any representation, warranty, or guarantee, expressed or implied as to its accuracy. Prospective Buyer or Tenant should conduct an independent investigation and verification of all matters deemed to be material, including, but not limited to, statements of income and expenses. Consult your attorney, accountant, or other professional advisor.



FOR LEASE

Queen Anne Square

200-220 WEST MERCER STREET, SEATTLE



JEFF HUNTINGTON
206.296.9619
jeff.huntington@kidder.com

TODD BATTISON
206.296.9621
todd.battison@kidder.com

MICHELLE CRABTREE, CPM, RPA
206.270.6503
mcrabtree@steelwavellc.com

KIDDER.COM

This information supplied herein is from sources we deem reliable. It is provided without any representation, warranty, or guarantee, expressed or implied as to its accuracy. Prospective Buyer or Tenant should conduct an independent investigation and verification of all matters deemed to be material, including, but not limited to, statements of income and expenses. Consult your attorney, accountant, or other professional advisor.

km Kidder Mathews