

# 276 POST ROAD WEST

WESTPORT, CONNECTICUT

**17,000 RSF AVAILABLE**

*(Divisible to 2,800 RSF)*

## EXTERIOR RENOVATIONS UNDERWAY



*Rendering*

**FOR LEASING INFORMATION,  
PLEASE CONTACT:**

**Adam Klimek**  
203 326 5856  
adam.klimek@cushwake.com

**William Montague**  
203 326 5865  
william.montague@cushwake.com

Cushman & Wakefield of Connecticut, Inc.  
107 Elm Street, 8th Floor  
Stamford CT 06901

A full commission computed and earned in accordance with the rates and conditions of our agency agreement with our principal, when received from our principal, will be paid to the cooperating broker who consummates a lease which is unconditionally executed and delivered by and between lessor and lessee (a copy of the rates and conditions referred to above is available upon request).



# PROPERTY INFORMATION



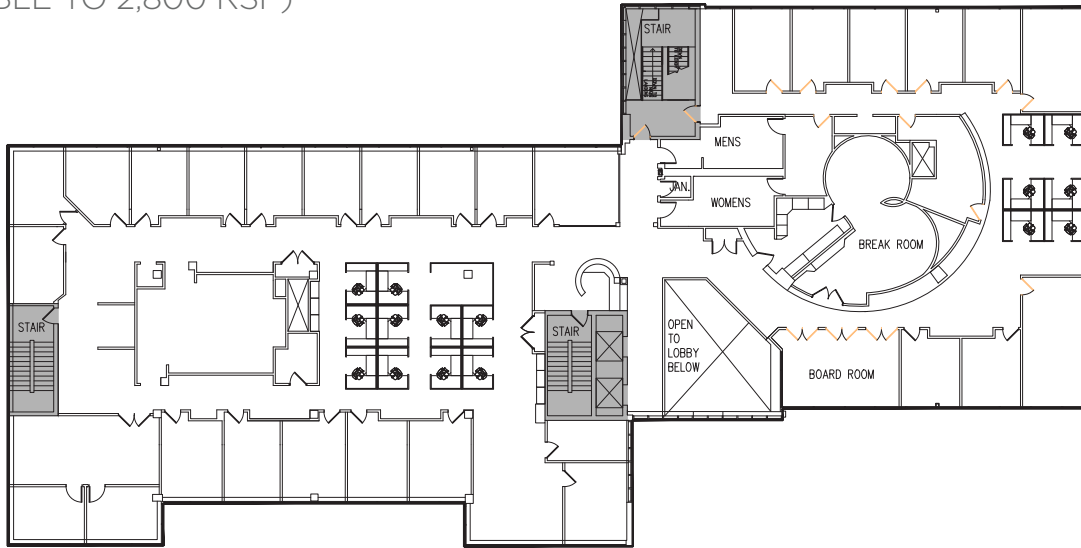
## FEATURES:

- Partially furnished, built space
- Available August 2020
- Undergoing renovations to activate the exterior - new landscaping, new exterior lighting, upgraded signage and new entryway
- Situated on Route 1 / Post Road West
- On-site property management
- Easy access to I-95 and Merritt Parkway
- Recently remodeled lobby and restrooms
- In close proximity to downtown Westport's restaurants and shops
- Abundant covered and surface parking at a ratio of 4 / 1,000 RSF



# FLOOR PLAN

2ND FLOOR -  
AVAILABLE AUGUST 2020  
17,000 RSF  
(DIVISIBLE TO 2,800 RSF)



2ND FLOOR  
TWO-TENANT LAYOUT

