



PROPERTY HIGHLIGHTS

- 1,300 - 4,000 Sq. Ft. Available
- Onsite Parking
- On 7 Mile Between U.S. Post Office and Detroit Edison
- Pylon Signage Available

DEMOGRAPHICS

	1 MILE	2 MILES	3 MILES
Total Households	8,031	29,576	66,004
Total Population	21,587	78,363	177,752
Average HH Income	\$42,594	\$50,619	\$52,150



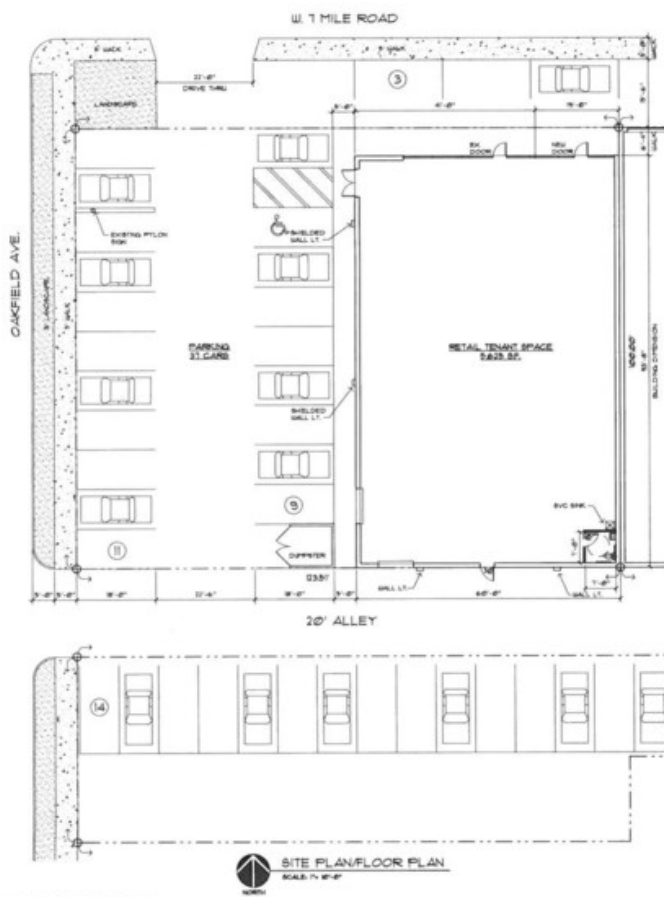
BOB RICHARDSON

248.855.1221
 brichardson@armadarealestate.com

7001 ORCHARD LAKE ROAD | WEST BLOOMFIELD TOWNSHIP | MI 48322
 248.855.1221 | ARMADAREALESTATE.COM



SITE PLAN



PROPERTY DESCRIPTION

LOTS 43 THROUGH 48 INCLUSIVE 'COLLEGEWOOD SUBD NO.' OF THE N. 1/2 OF THE N.W. 1/4 OF SECTION 2 T.18. N.30E. WESTFORD TOWNSHIP (NOW CITY OF DETROIT) AS RECORDED IN LIBER 93 OF PLATS, PAGE 1 OF WAYNE COUNTY RECORDS

BUILDING DATA/CODE INDEX:

USE GROUP	MERCANTILE/BUSINESS
CONSTRUCTION TYPE	3B
ZONING	MERCANTILE
GROSS BUILDING AREA	5,825 SF.
PARKING REQUIRED	5,825/200 = 29 CARS
PARKING INDICATED	31 CARS
BUILDING CODES	2010 MICHIGAN BUILDING CODE 2010 MICHIGAN PLUMBING CODE 2010 MICHIGAN MECHANICAL CODE 2011 NATIONAL ELECTRICAL CODE 2011 MICHIGAN APERTMENTS MICHIGAN BARRIER FREE - ICC/ANSI A117-1-2003 2009 MICHIGAN UNIFORM ENERGY CODE PART 12A ANSI/ASHRAE/IESNA STANDARD 90.1 2009 INTERNATIONAL FIRE CODE



BOB RICHARDSON

248.855.1221

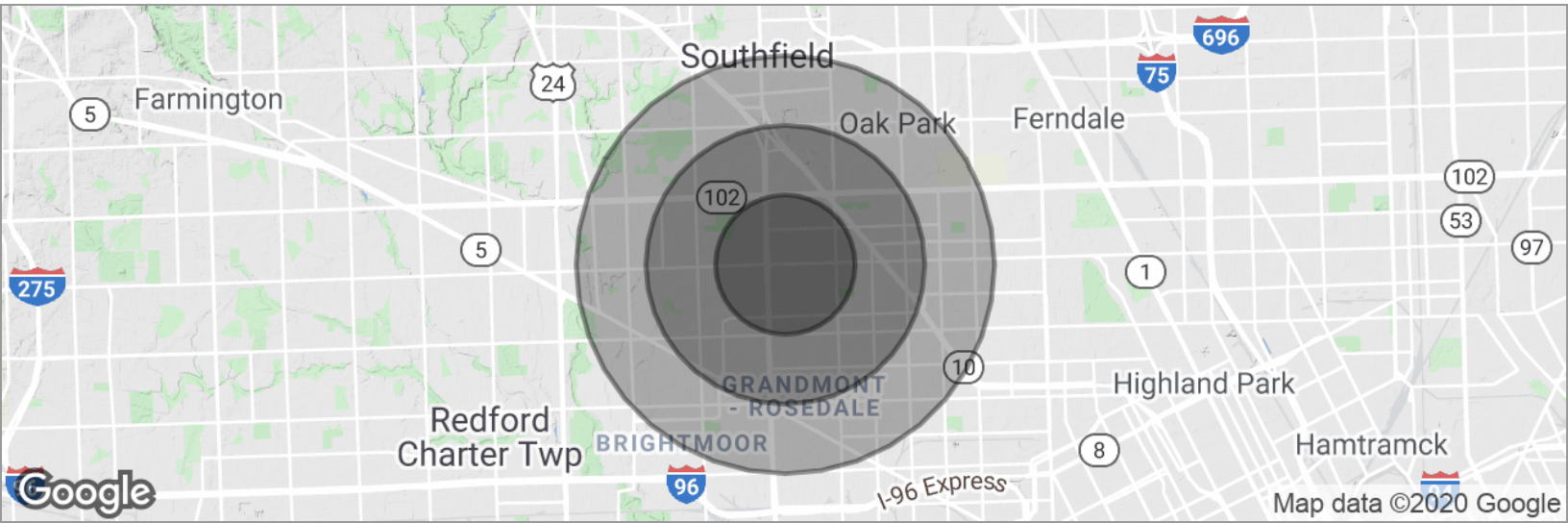
brichardson@armadarealestate.com

7001 ORCHARD LAKE ROAD | WEST BLOOMFIELD TOWNSHIP | MI 48322

248.855.1221 | ARMADAREALESTATE.COM



DEMOGRAPHICS MAP



POPULATION	1 MILE	2 MILES	3 MILES
Total population	21,587	78,363	177,752
Median age	35.7	38.0	37.5
Median age (male)	32.1	34.4	34.4
Median age (Female)	37.5	40.7	39.9
HOUSEHOLDS & INCOME	1 MILE	2 MILES	3 MILES
Total households	8,031	29,576	66,004
# of persons per HH	2.7	2.6	2.7
Average HH income	\$42,594	\$50,619	\$52,150
Average house value	\$86,357	\$102,981	\$116,098

BOB RICHARDSON

248.855.1221

brichardson@armadarealestate.com

7001 ORCHARD LAKE ROAD | WEST BLOOMFIELD TOWNSHIP | MI 48322

248.855.1221 | ARMADAREALESTATE.COM

